



AdvancedSmartMove Installation Manual

YOKOGAWA Deutschland GmbH
Broichhofstraße 7-11
40880 Ratingen
Tel. +49 - 2102 - 4983 - 0

Content:

- 1. Introduction.....3
- 2. Revision3
- 3. System Requirements.....4
 - 3.1 Hardware4
 - 3.2 Software.....5
 - 3.3 Prerequisite5
 - 3.4 Operating System5
- 4. Download.....5
 - 4.1 Internet Explorer Message.....5
- 5. Installation preparation7
 - 5.1 Necessary data7
 - 5.2 Trial version7
- 6. Installation Procedure Diagram8
- 7. Installation .Net Framework9
 - 7.1 Windows Server 20169
 - 7.2 Windows 10.....15
 - 7.3 Download Windows .Net Framework 4 Full installation.....17
- 8. Installation AdvancedSmartMove.....18
- 9. Windows FTP server installation.....26
 - 9.1 Test FTP Function / Testing the FTP Transfer.....37
- 10. Windows Firewall38
 - 10.1 Windows38
- 11. Run Program as NT- Service40
 - 11.1 Installation40
 - 11.1.1 Change the settings for the service:41
 - 11.2 De-Installation Service43
- 12. De-installation Program44
- 13. More Solutions.....44

1. Introduction

The program AdvancedSmartMove performs automatic transfer, rename, or delete files are not reachable of the data files and the event files of the Yokogawa recorder from the DX, DXP, FX, DXAdvanced, MV1000 and SmartDAC+ family.

A condition for these functions is the presence of the data files, display data files and/or display event files in a folder on the Windows PC. Using the ftp client function of the Yokogawa recorders, it is possible to store the files on the PC. For further information please read operating instructions of the recorder.

For updates and changes about the program, please read the info file stored in the installation folder or contact your Yokogawa sales team.



Note:

Please read this manual to find solutions!

2. Revision

Date	Version	Reason
08/2021	1	English version

3. System Requirements

3.1 Hardware

For the documentation of the test, a paperless Data recorder is required. The Data recorders listed below are supported by the Add in:

Recorder	File extension	Data type
GX20 / GP20 / GM10 GX10 / GP10 www.smartdac.com [with /AS1 Pharma Option]	.GDS .GEV .GSE .GSD [AS1 Pharma Option]	Display Data Event Data Display Data Event Data [with /AS1 Pharma Option]
DX1000 / DX1000N / DX2000 [DXAdvanced] www.DAQStation.com	.DAD .DAE	Display Data Event Data
DX1000 / DX2000 [with /AS1 Pharma Option]	.DSD .DSE	Display Data Event Data
DX100 / DX200	.DDS .DEV	Display Data Event Data
FX1000	.DAD .DAE	Display Data Event Data
MV1000 / MV2000 [MVAdvanced]	.DAD .DAE	Display Data Event Data
FX100	.DDS .DEV	Display Data Event Data
DX100P / DX200P Pharma-Ausführung	.DBD .DBE	Display Data Event Data
MW100 / MX100	.MXD	Data
DL850	.WDF	Data files

For the analysis using a PC, the following minimum hardware requirements must be met.

- Hard disk capacity: 30 MB
- Memory: 4GB

3.2 Software

The program AdvancedSmartMove is Windows based and requires therefore a Windows Operating System.

3.3 Prerequisite

- Windows .Net Framework 4 Full installation (is checked by setup)
 - o <http://www.microsoft.com/en-us/download/details.aspx?id=17718>

3.4 Operating System

The program has been tested on the following platforms¹:

- Windows 10 [32bit]
- Windows 10 [64bit]
- Windows Server 2012R2
- Windows Server 2016

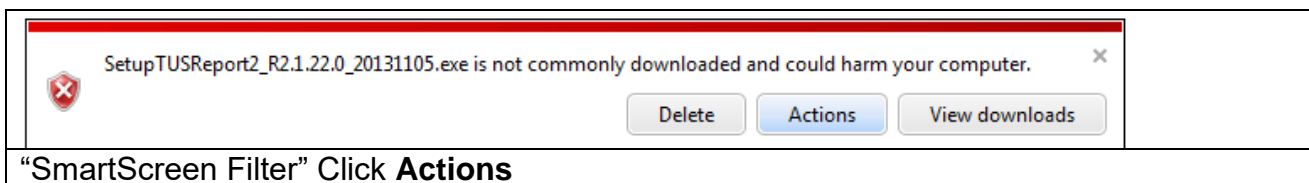
4. Download

Load the latest version of our solution from the following web Page:

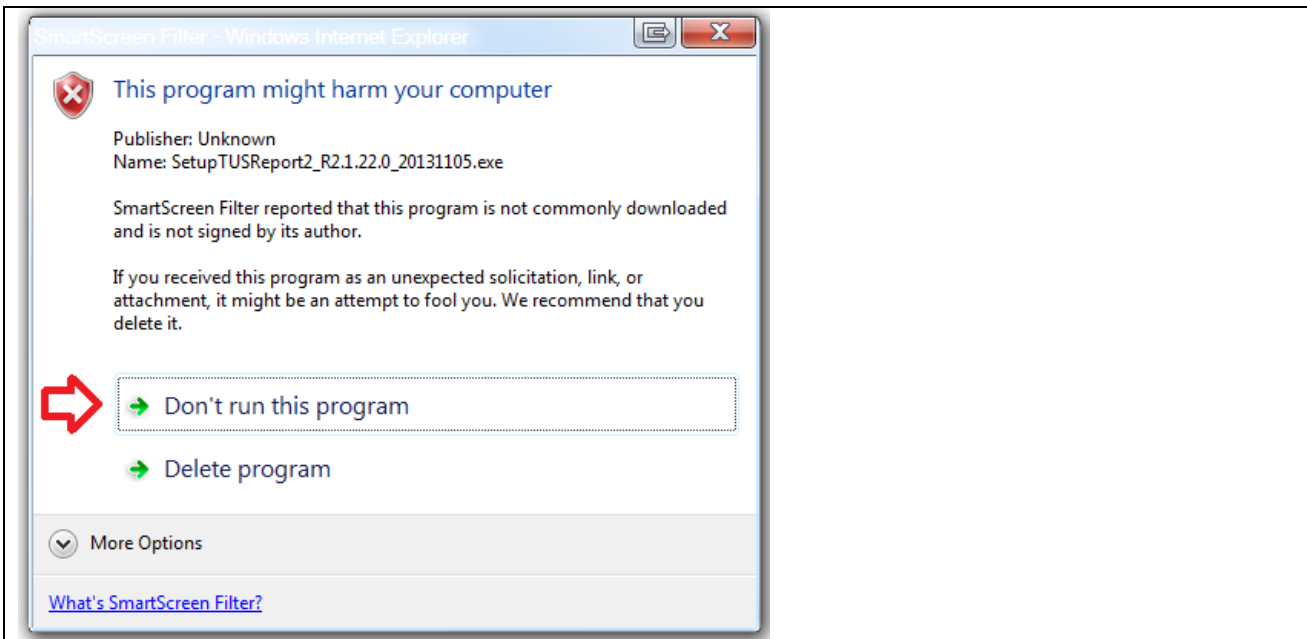
<https://www.AdvancedTools.de>

4.1 Internet Explorer Message

If the Internet Explorer Function enables “SmartScreen Filter” you get sometime the following Message Window.



¹ Microsoft Windows and Excel are a registered trademarks or trademarks of Microsoft Corporation in the United States and/or other countries



Click **Don't run this program** otherwise it has been download again.

5. Installation preparation

5.1 Necessary data

For the installation of the program the file SetupAdvancedSmartMove_xxx.exe, and a license number are required.

The license number will be given at the delivery of the package. Keep this information carefully!

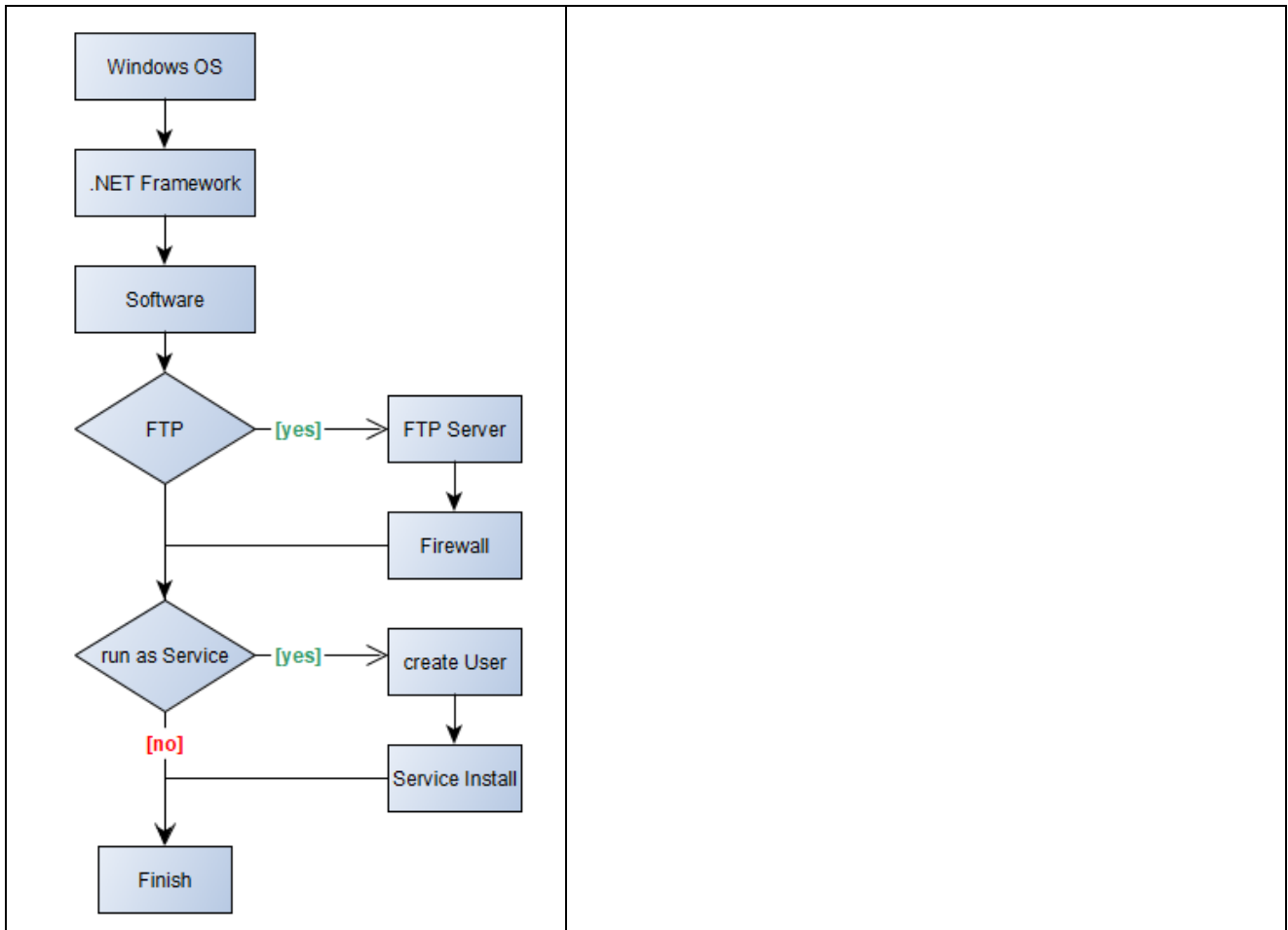
The recorded data files should be available at the computer where the AdvancedSmartMove program is installed. The best solution is to activate the FTP server function which is available in Windows. All Yokogawa recorders implement an automatic FTP client function which sent the data files to the FTP server. The data files will be stored in a specified directory. This directory will be accessed by AdvancedSmartMove program to perform the data conversion.

5.2 Trial version

For trial leave the field for the serial no empty. Some functions are not available in the trial function as well.

6. Installation Procedure Diagram

For Installation, please follow the Installation Diagram. Each step will be described at the following chapter.

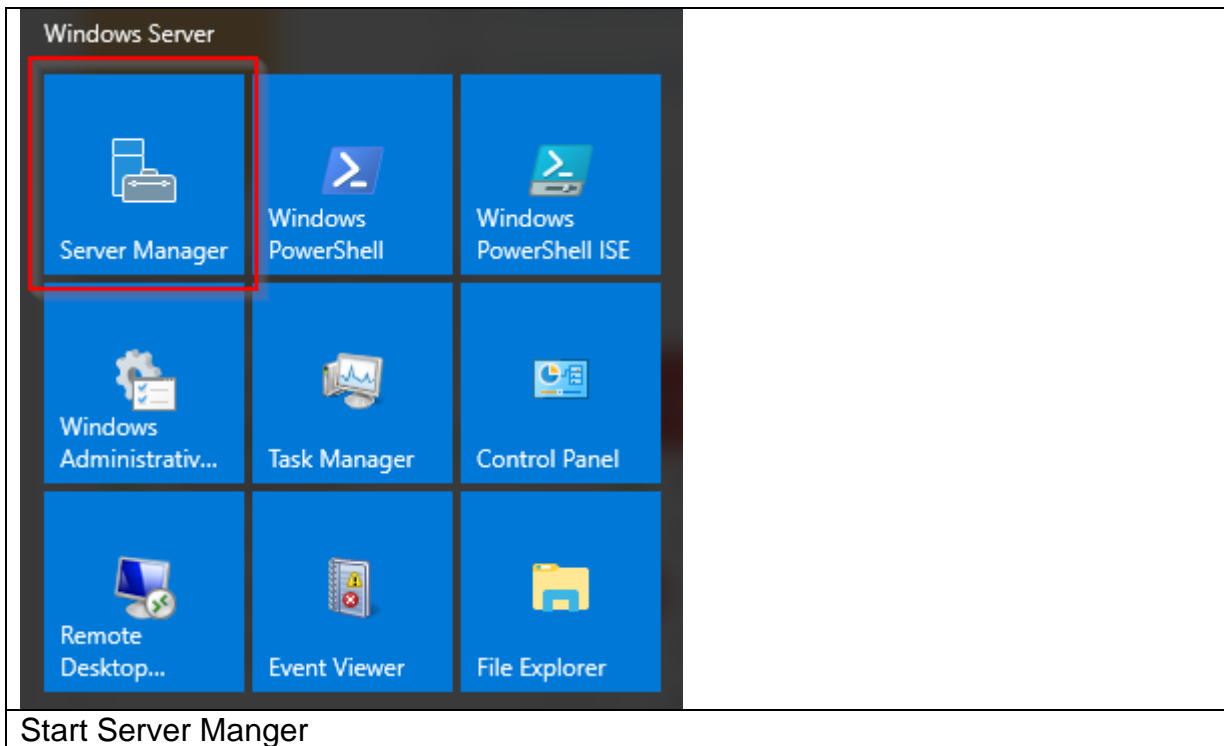


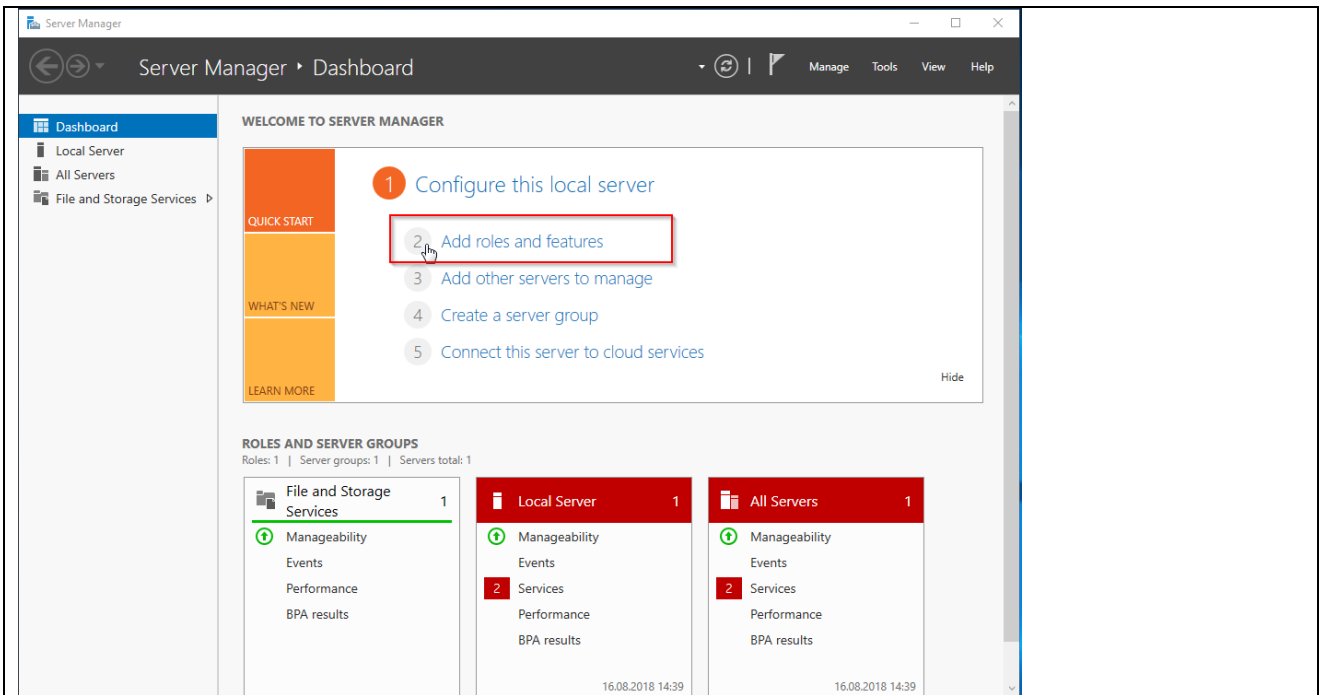
7. Installation .Net Framework

7.1 Windows Server 2016

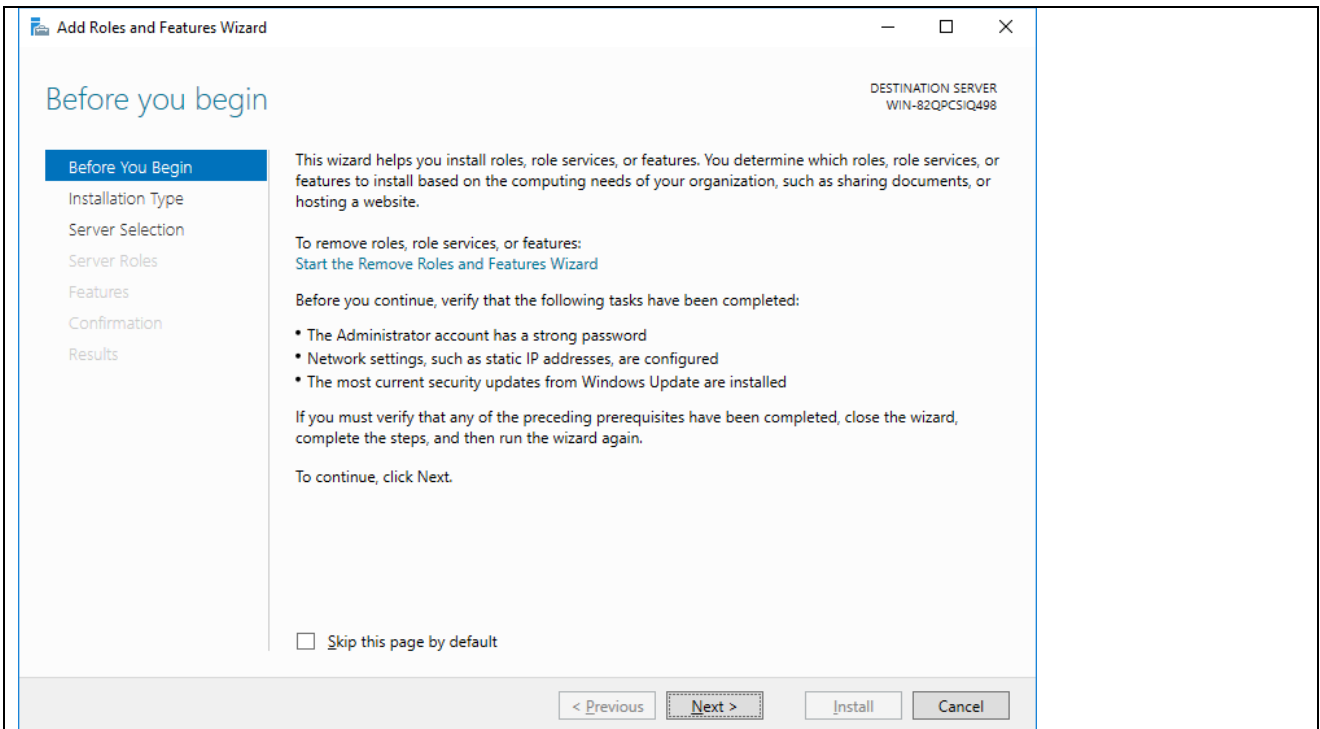
For the installation of Windows .Net Framework it is required to use the Windows installation CD or an Internet connection.

- Windows .Net Framework 2 Full installation
- Windows .Net Framework 4 Full installation

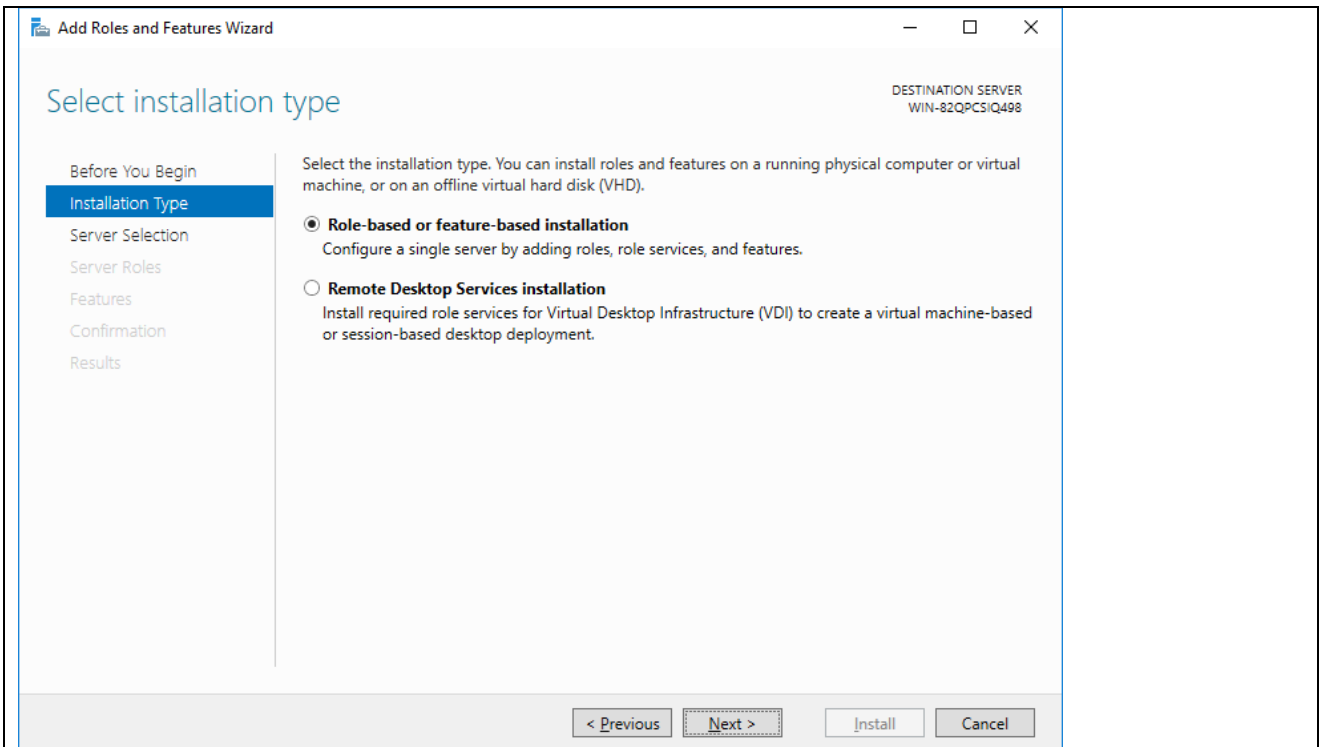




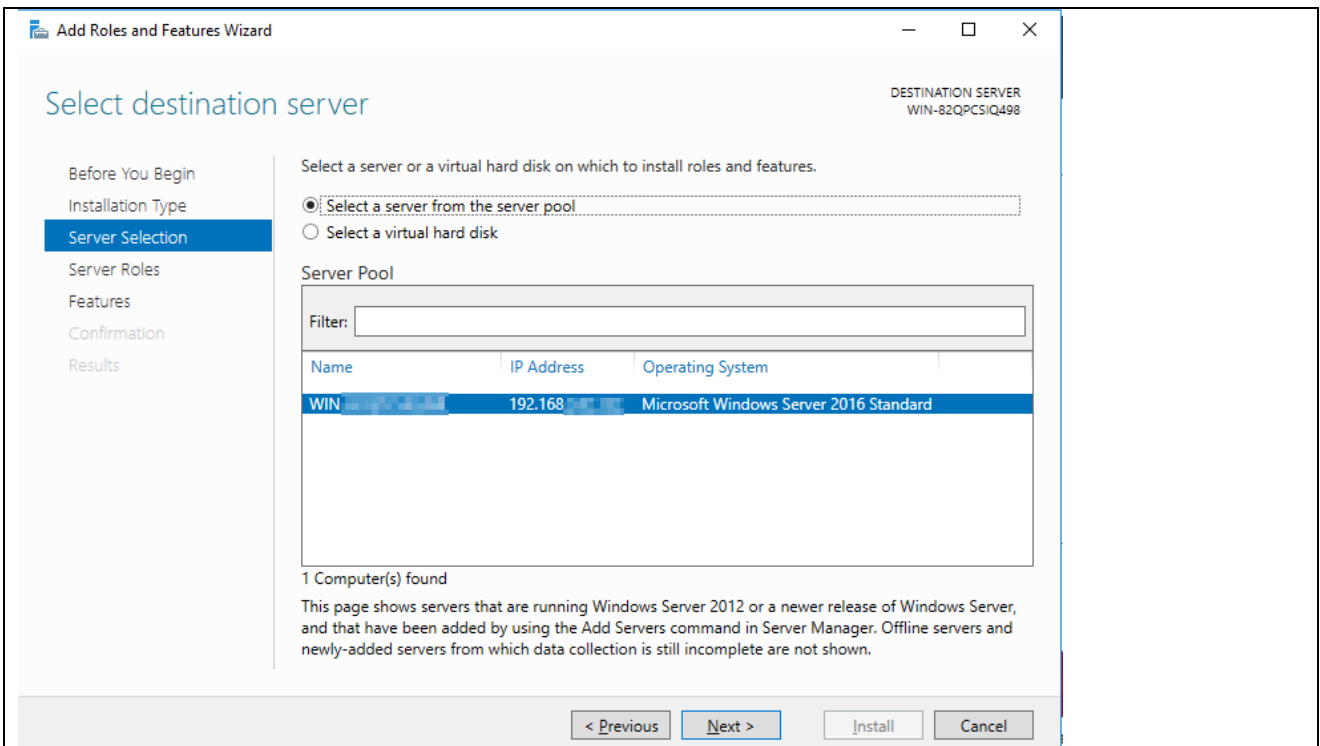
Add a role



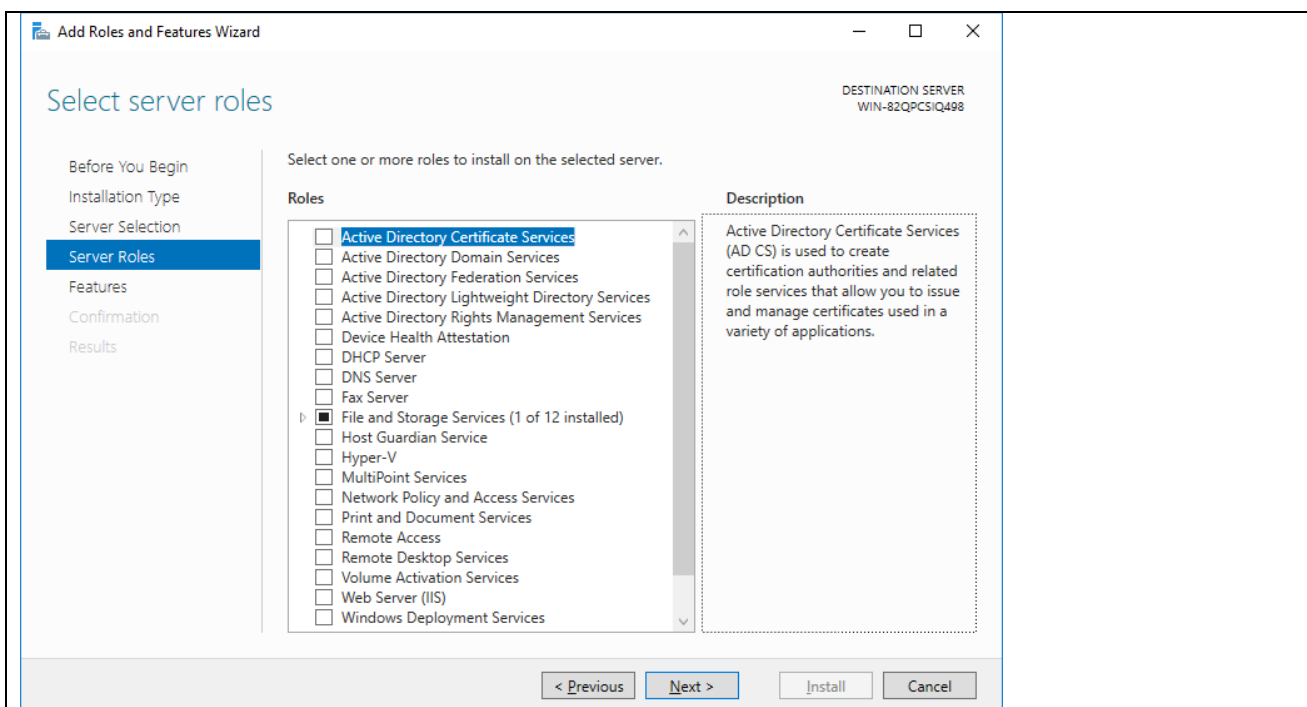
Follow the assistant



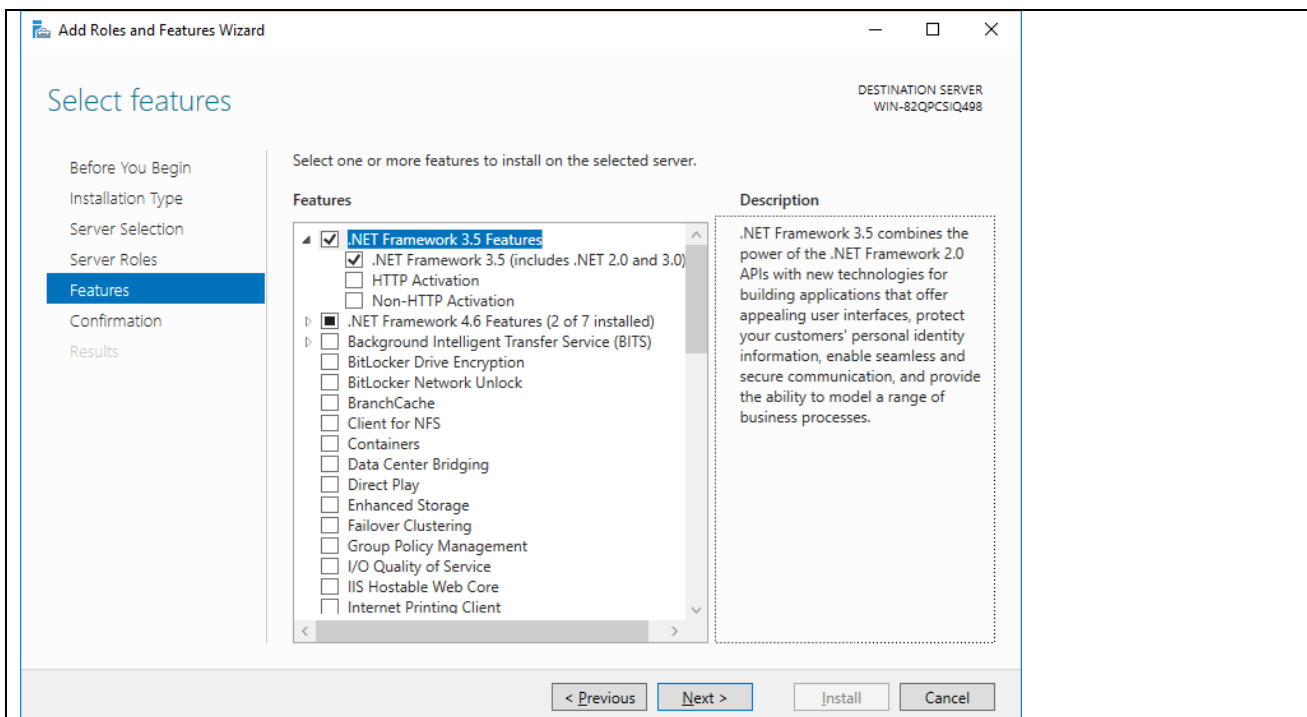
Role based installation



Use the active partition

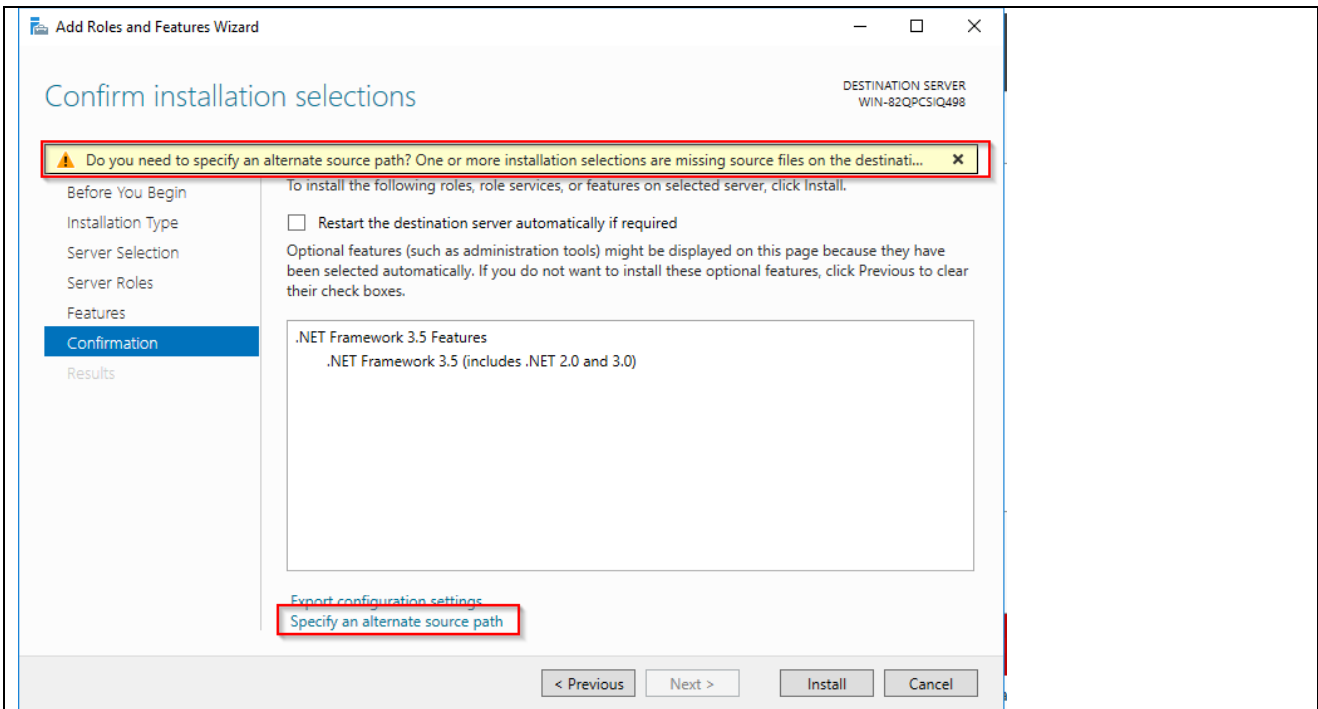


Check no extras

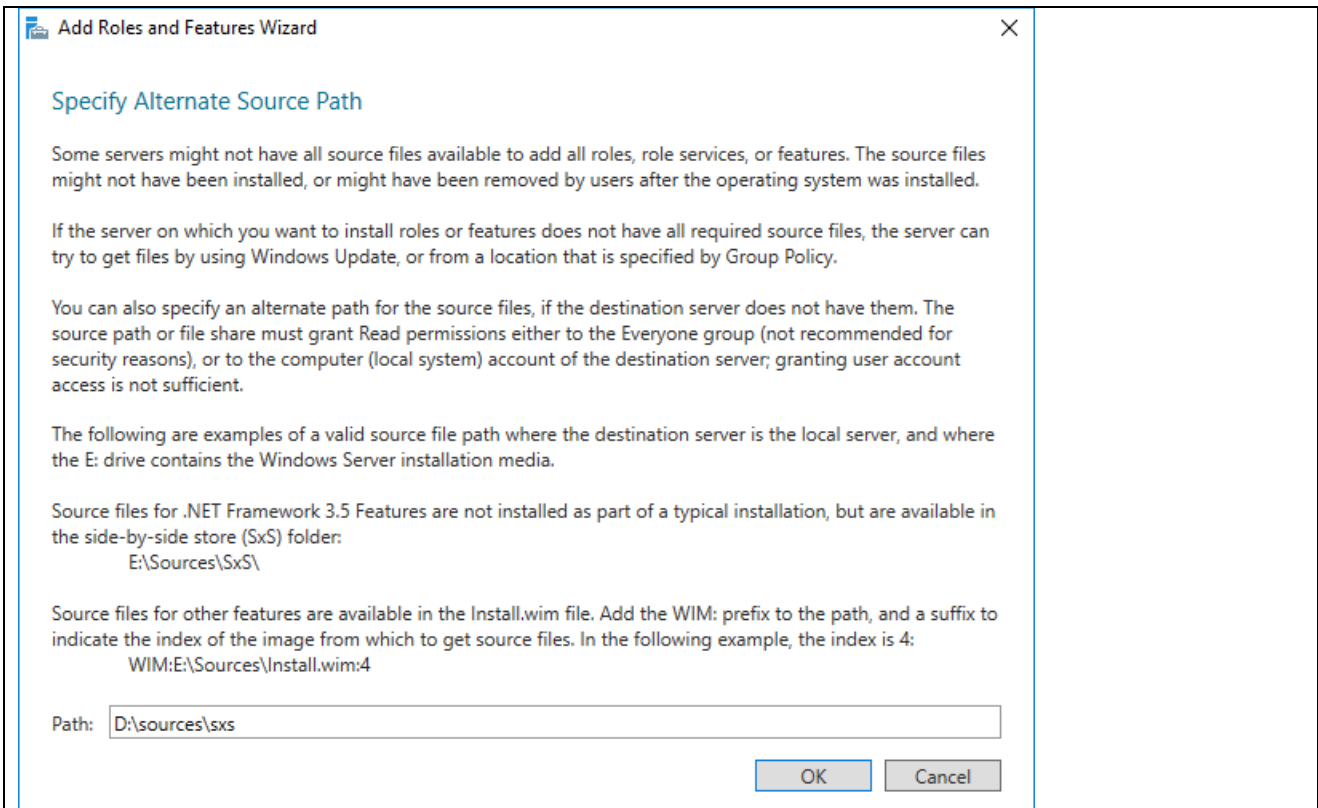


.Net Framework 3.5 Features

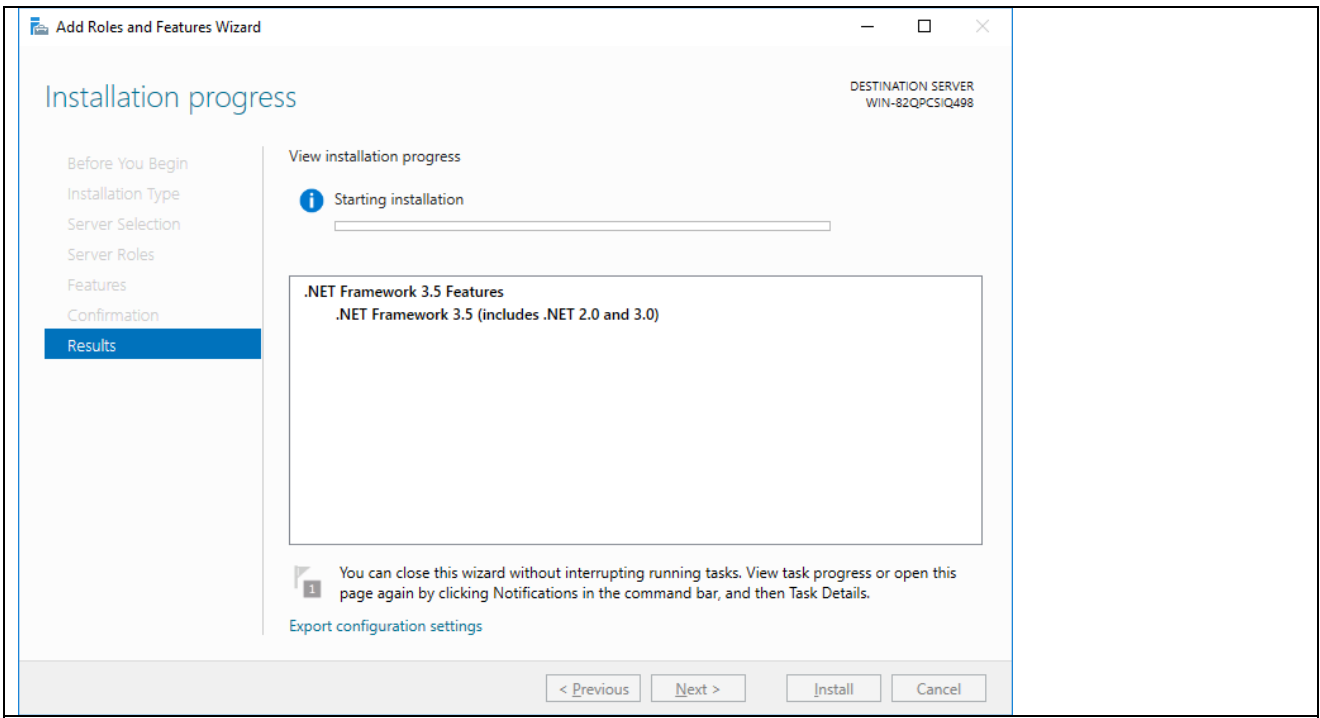
➔ .Net Framework 3.5 Features (include .Net 2.0 and 3.0)



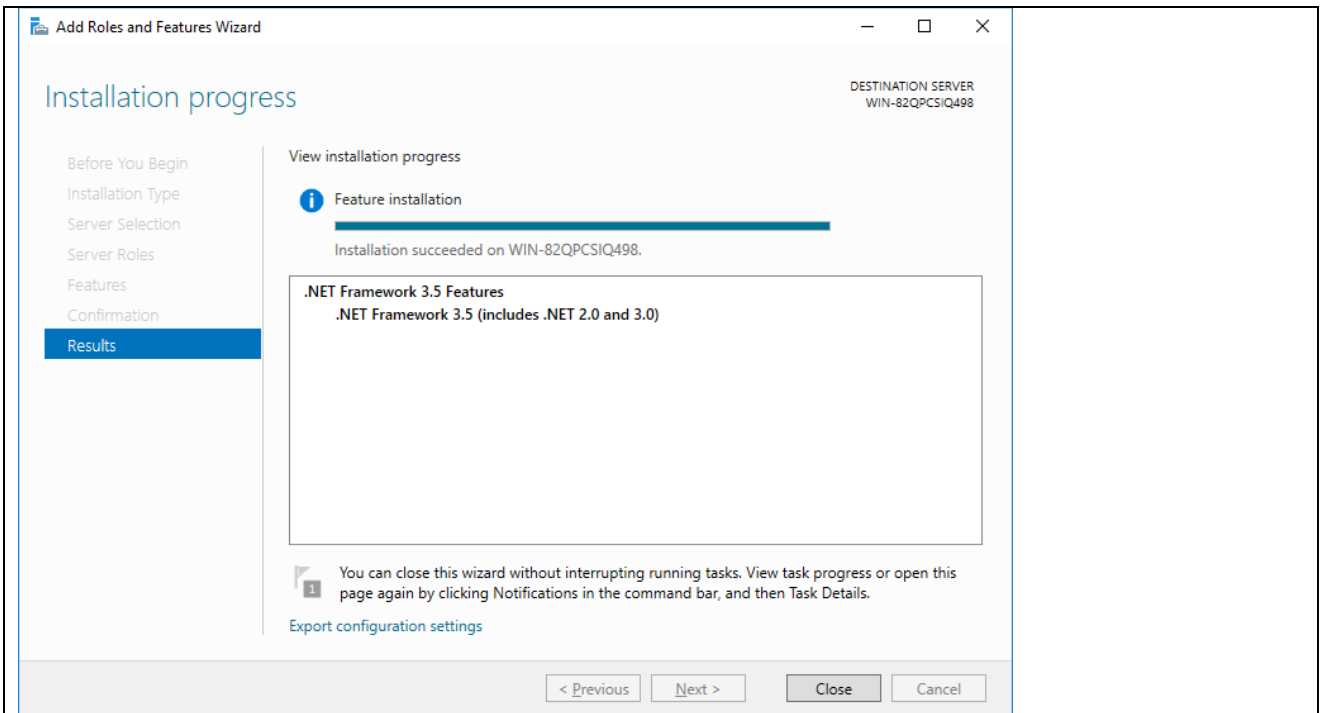
If there is no Internet connection available, select the path to the Windows installation CD.



Use the path with the folder „/SxS“

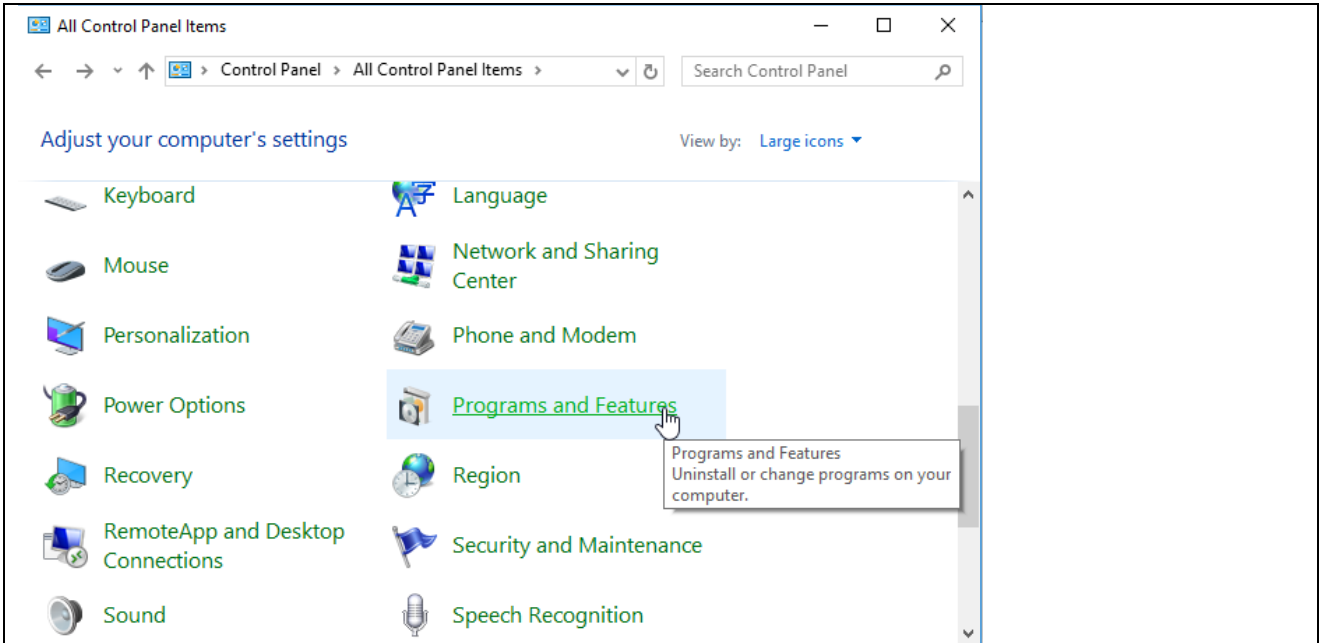


Installation starts

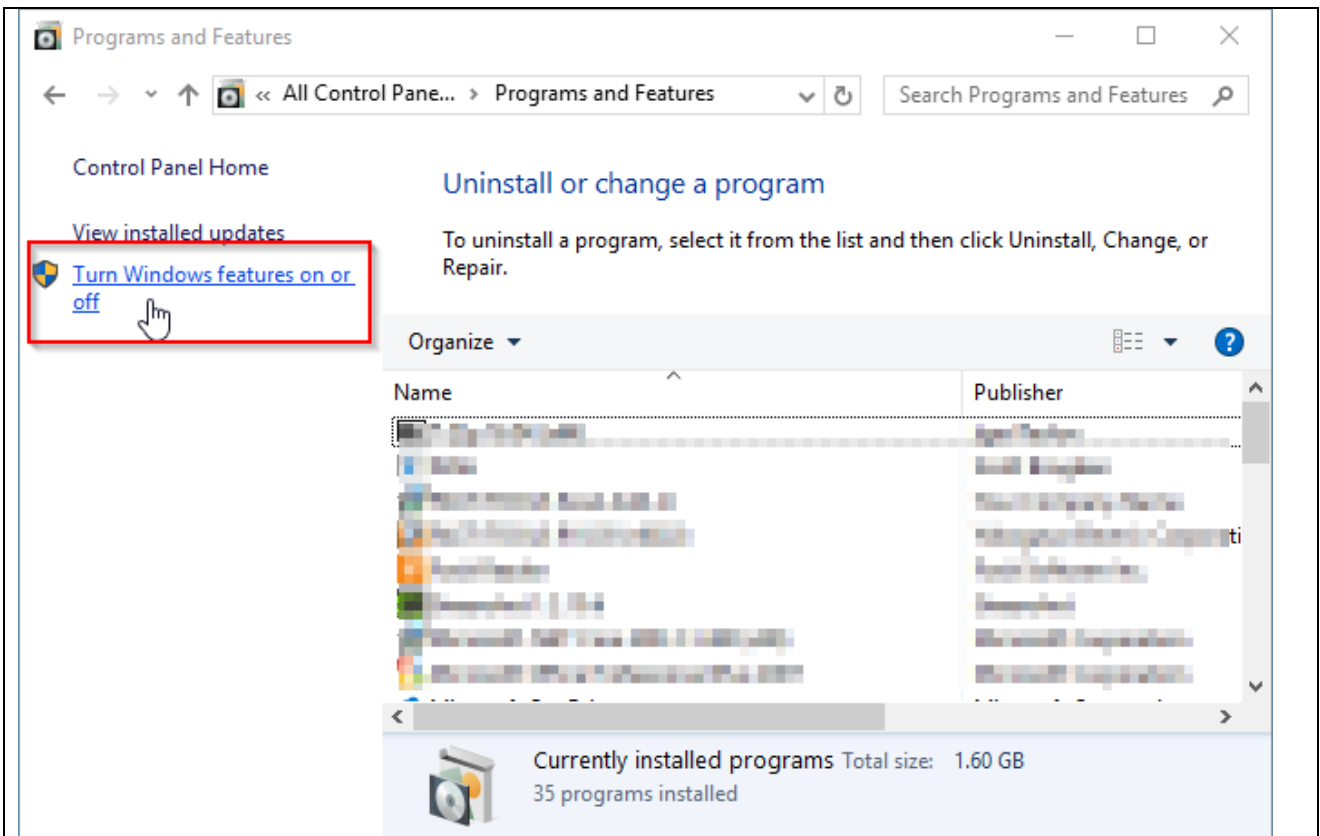


Installation successfully

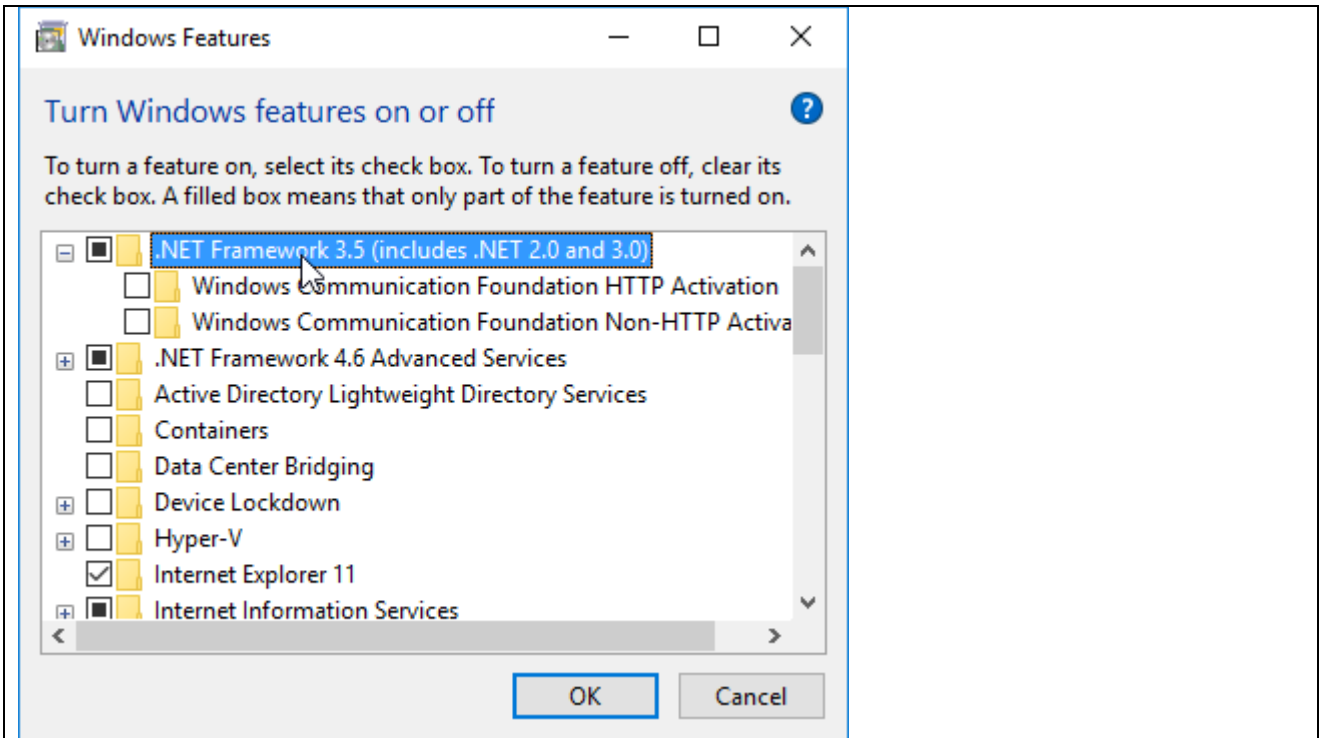
7.2 Windows 10 Windows .Net installation



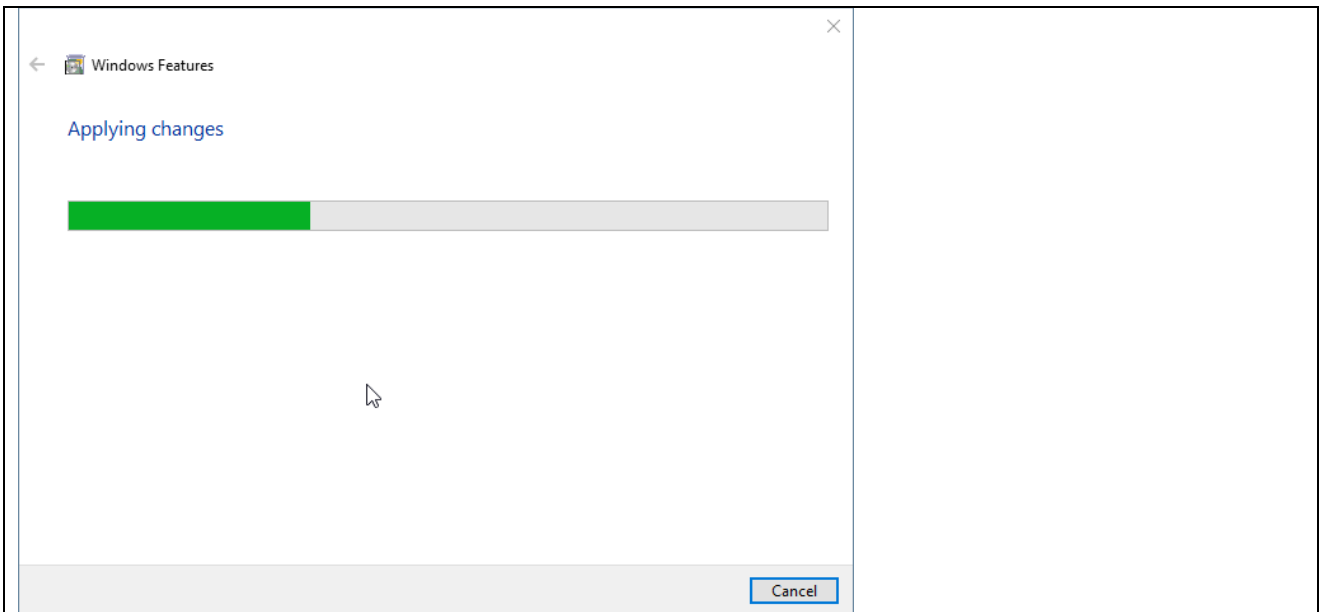
Control Panel → Programs and Features



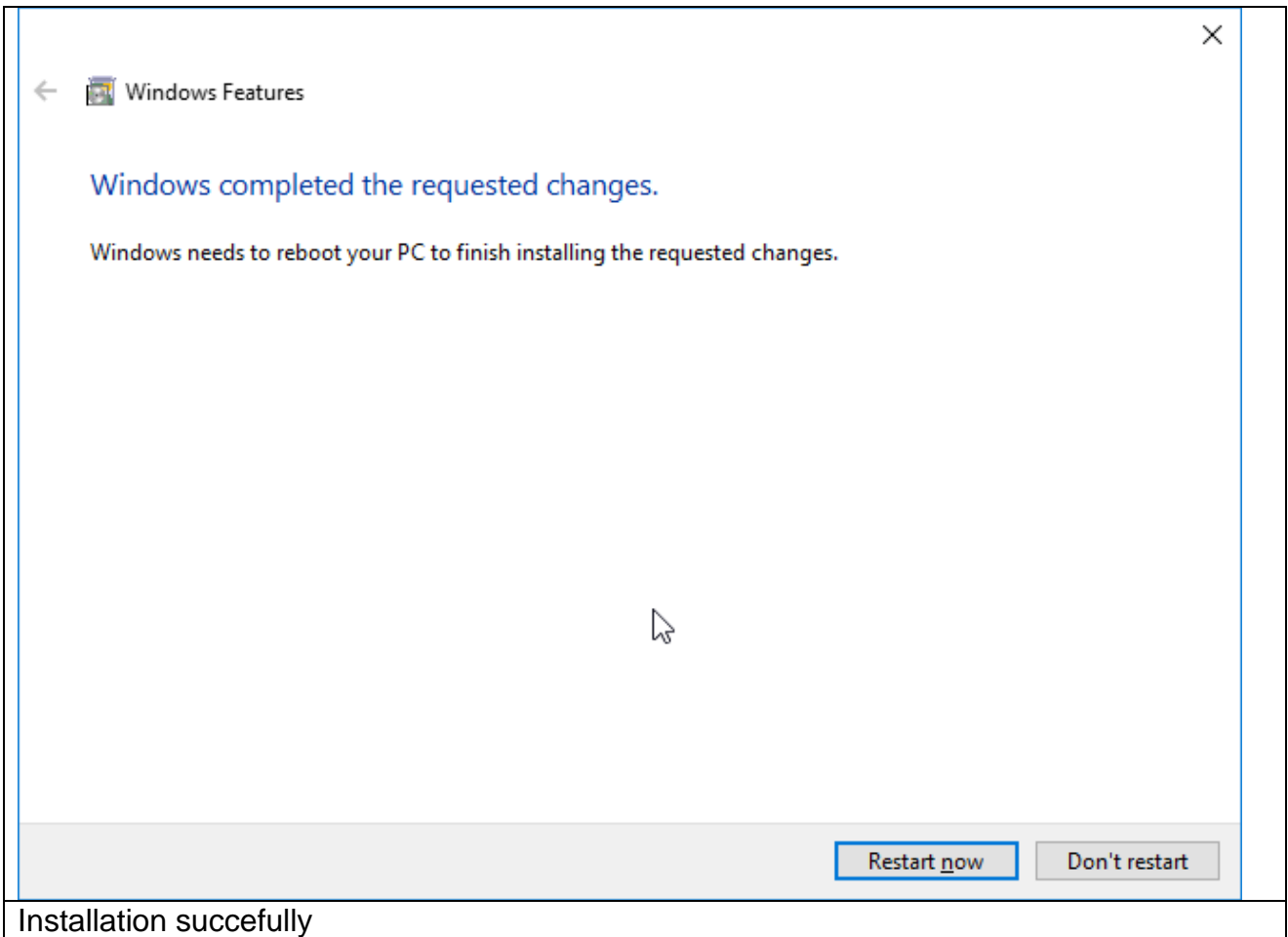
„Turn Windows features on or off“



.Net Framework 3.5 Features
→ .Net Framework 3.5 Features (include .Net 2.0 and 3.0)



If there is an Internet connection it will be start automatically.



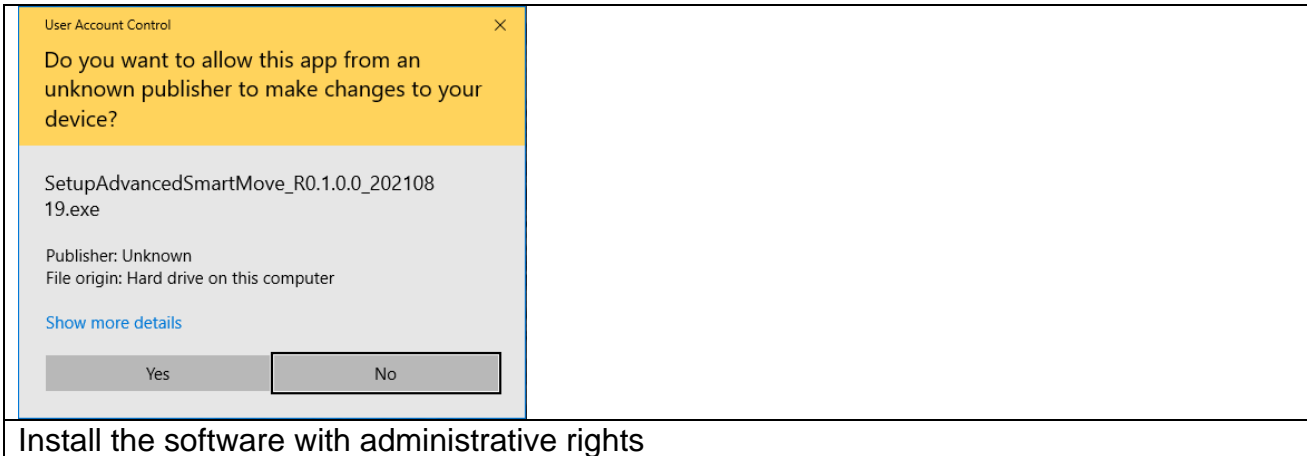
7.3 Download Windows .Net Framework 4 Full installation

For download the Windows .Net Framework 4 Full installation file use the .Net framework Microsoft Webpage.

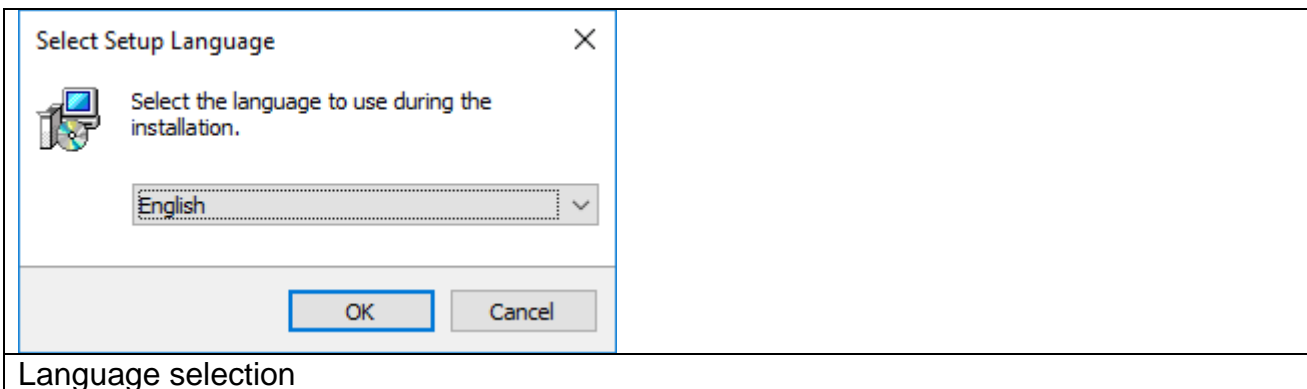
- Windows .Net Framework 4 Full installation
 - o <http://www.microsoft.com/en-us/download/details.aspx?id=17718>

8. Installation AdvancedSmartMove

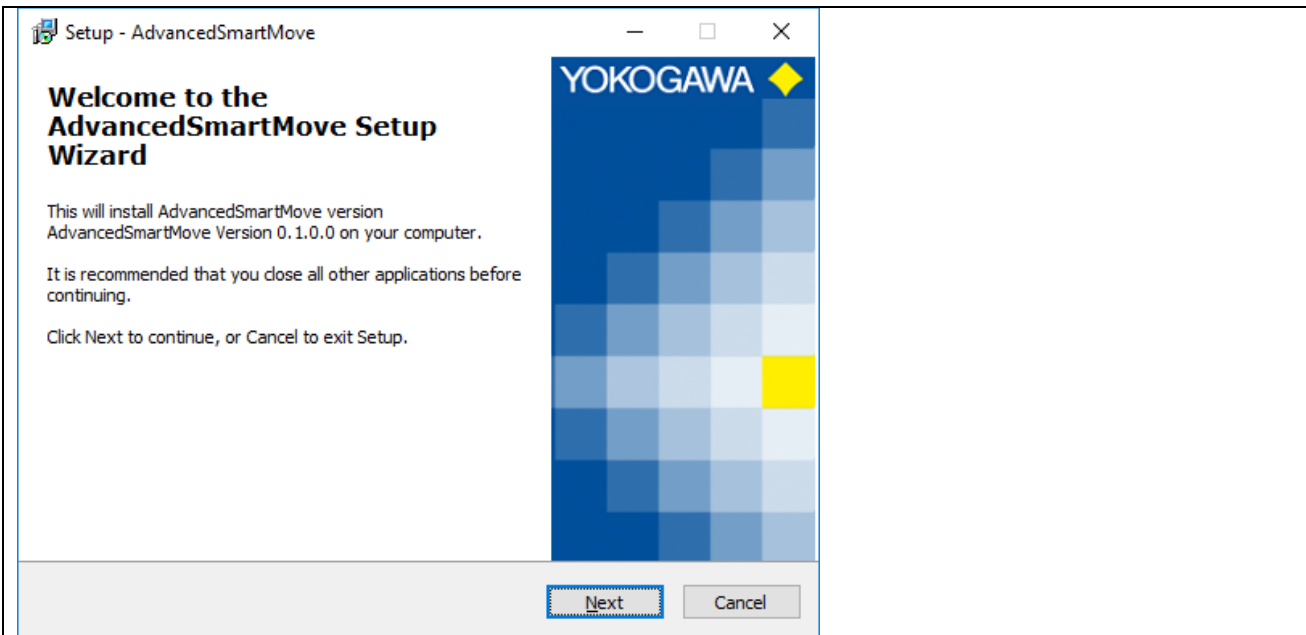
Execute the program SetupAdvancedSmartMove.exe.



Then a window to select the language will appear. Select "English" and confirm it with the "OK" button..



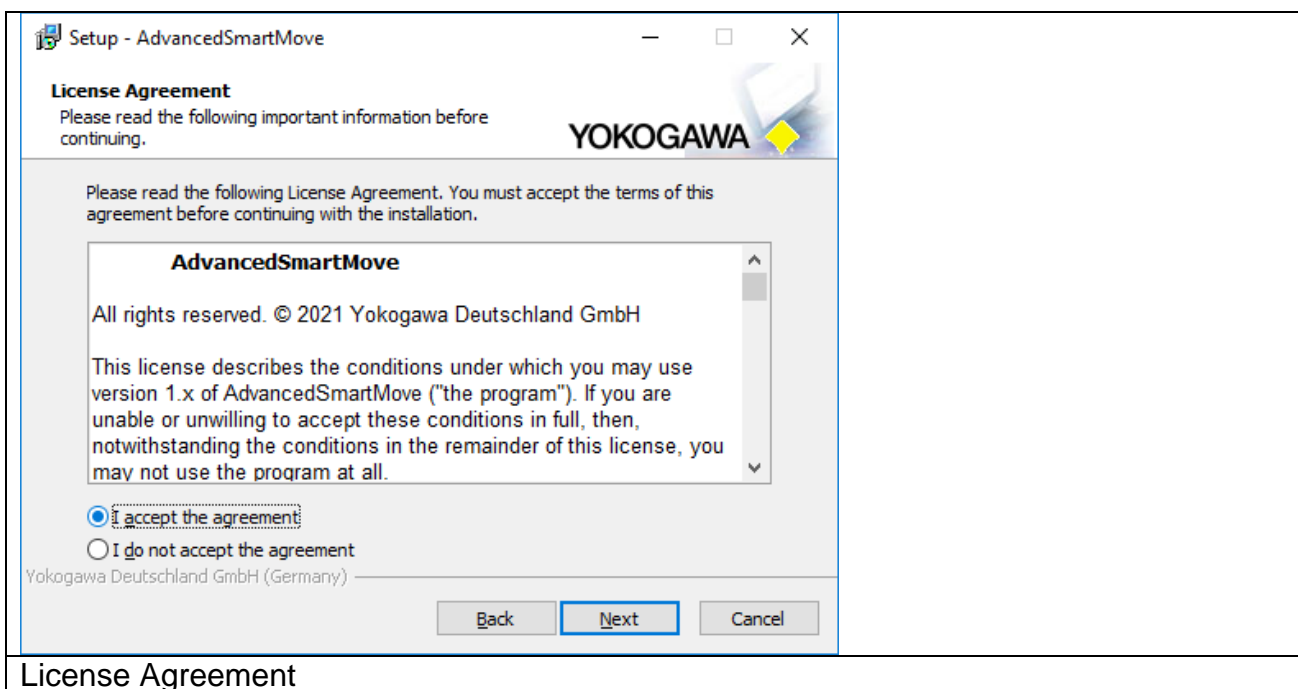
Confirm the welcome window with "Next".



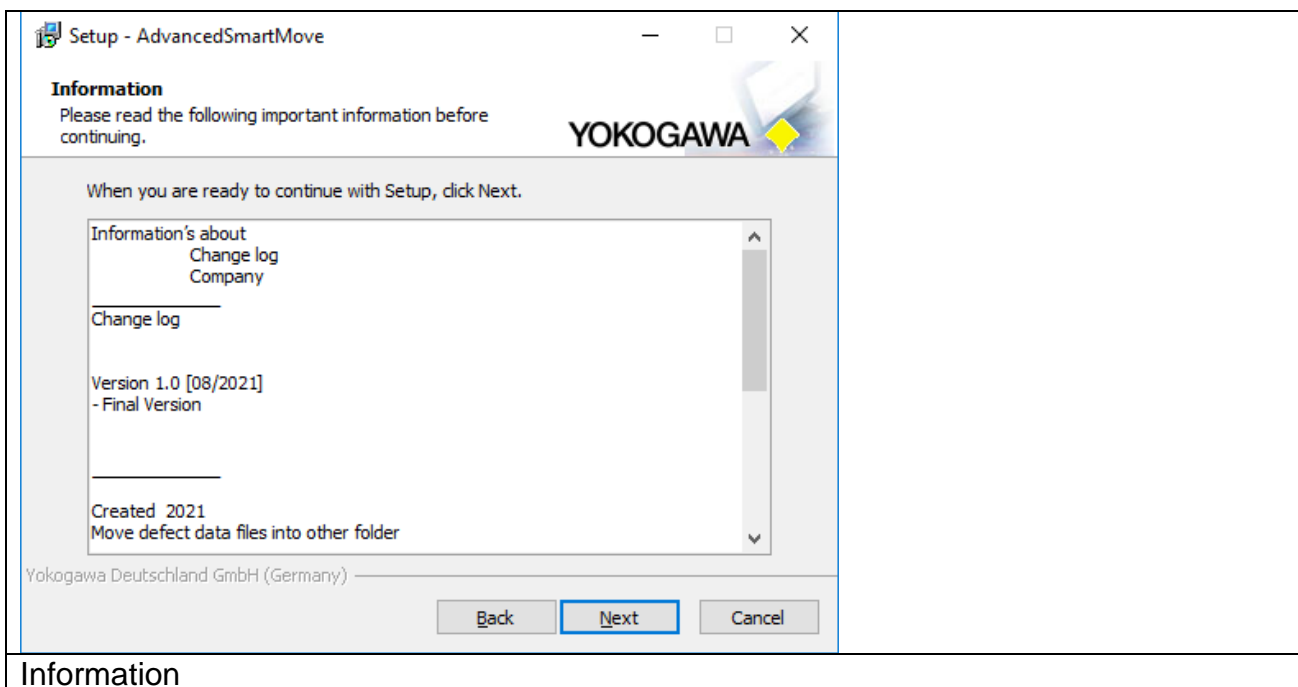
Welcome display



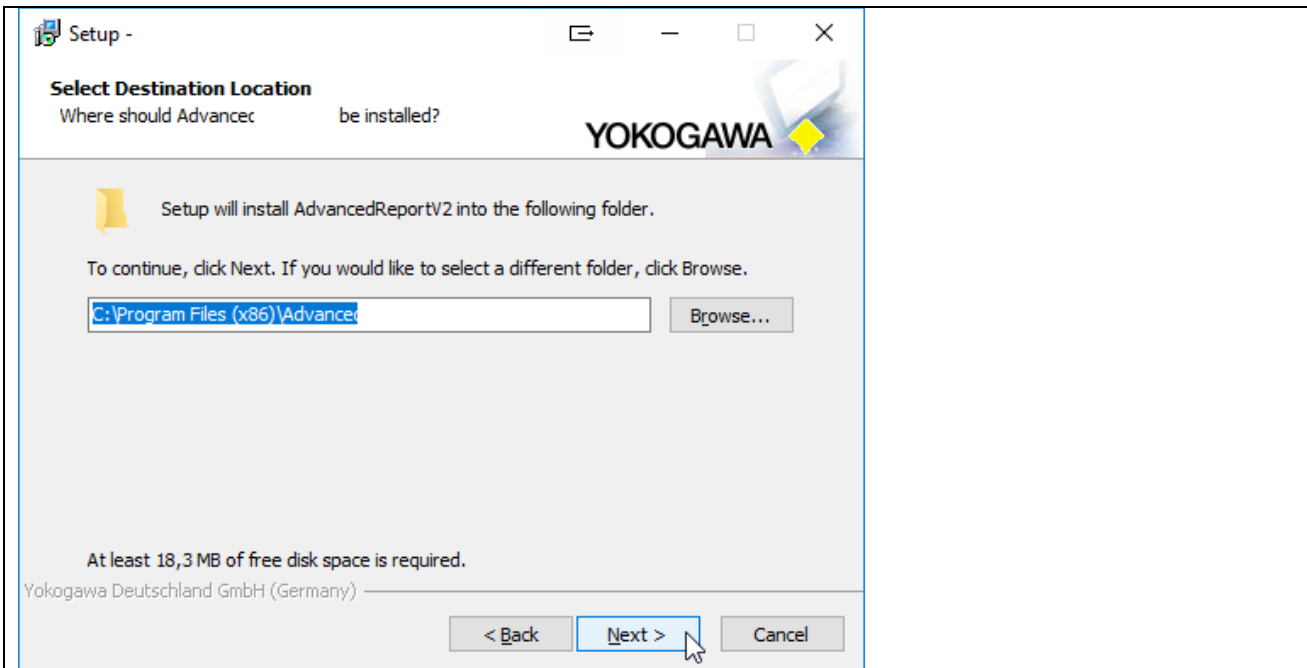
Informations



Read the information carefully and confirm it with the button “Next”.



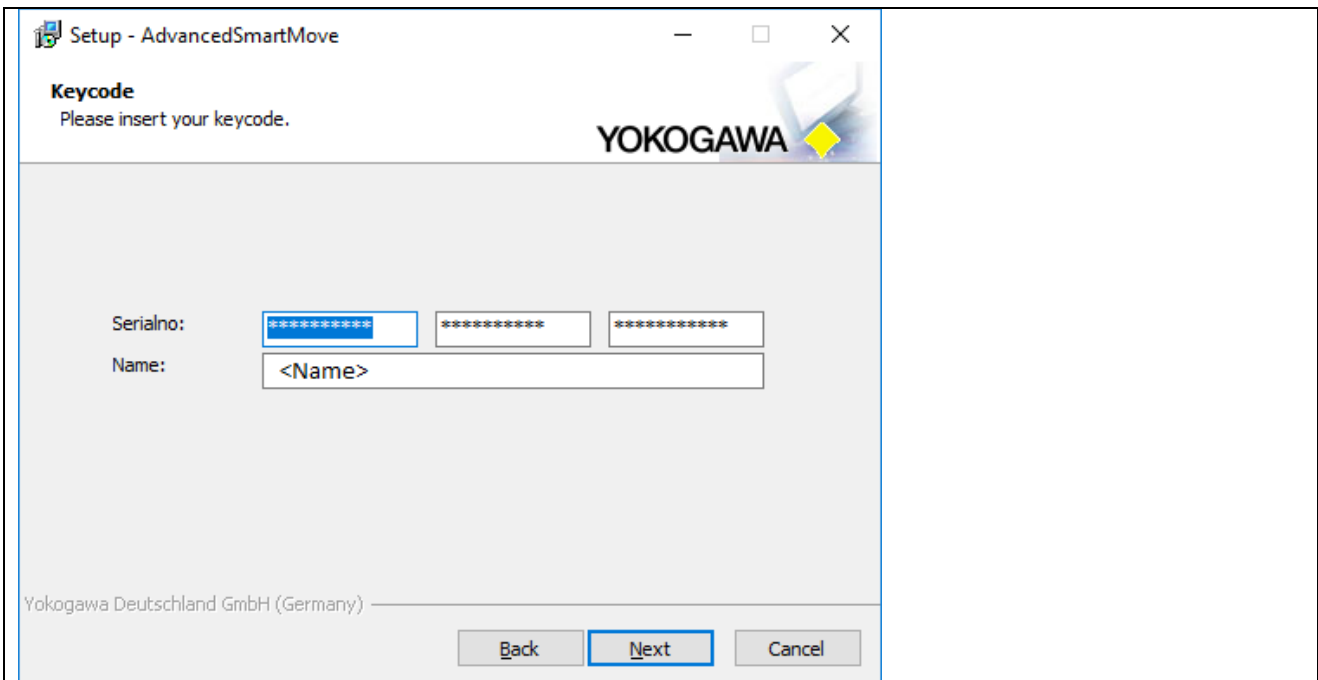
Select the destination location folder for the AdvancedSmartMove program and conform it to the “Next” button.



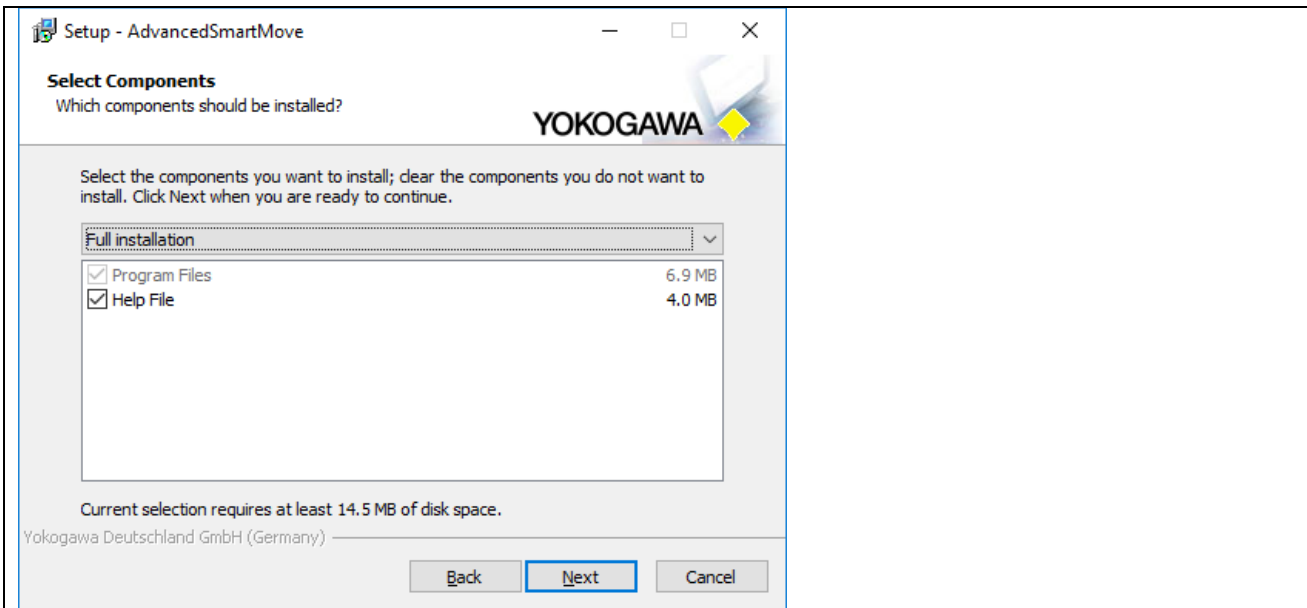
Selection of destination folder

Then enter the key code and name.

If the key code is correct, then the installation of the program will be activated with the button "Next".

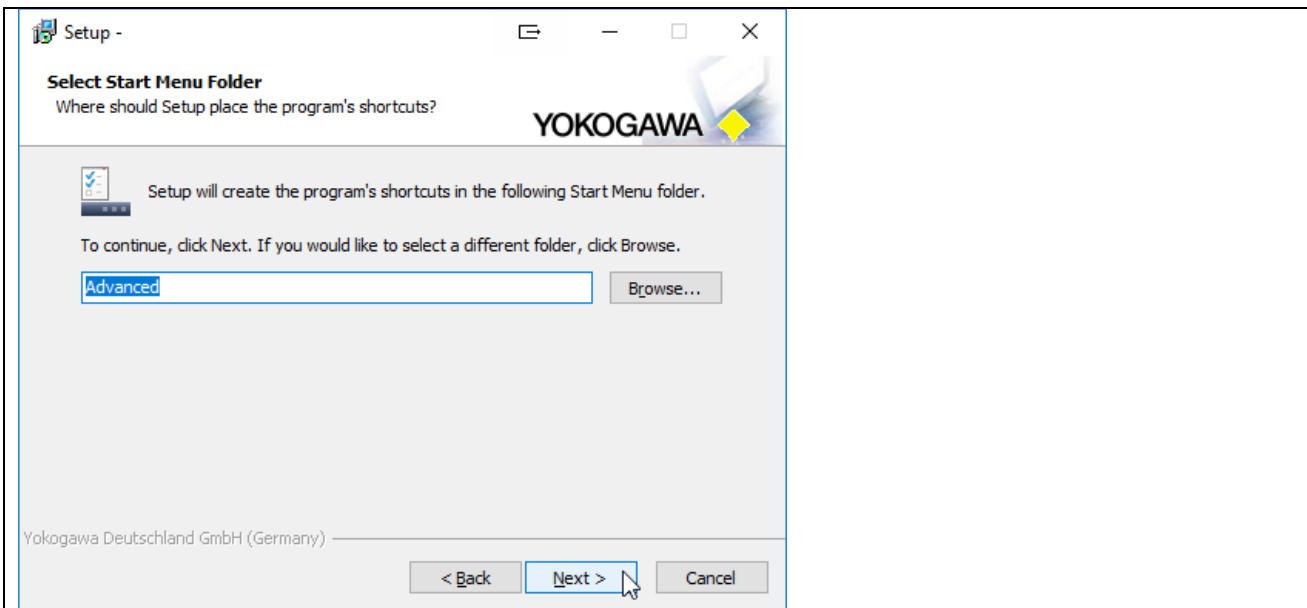


Registration



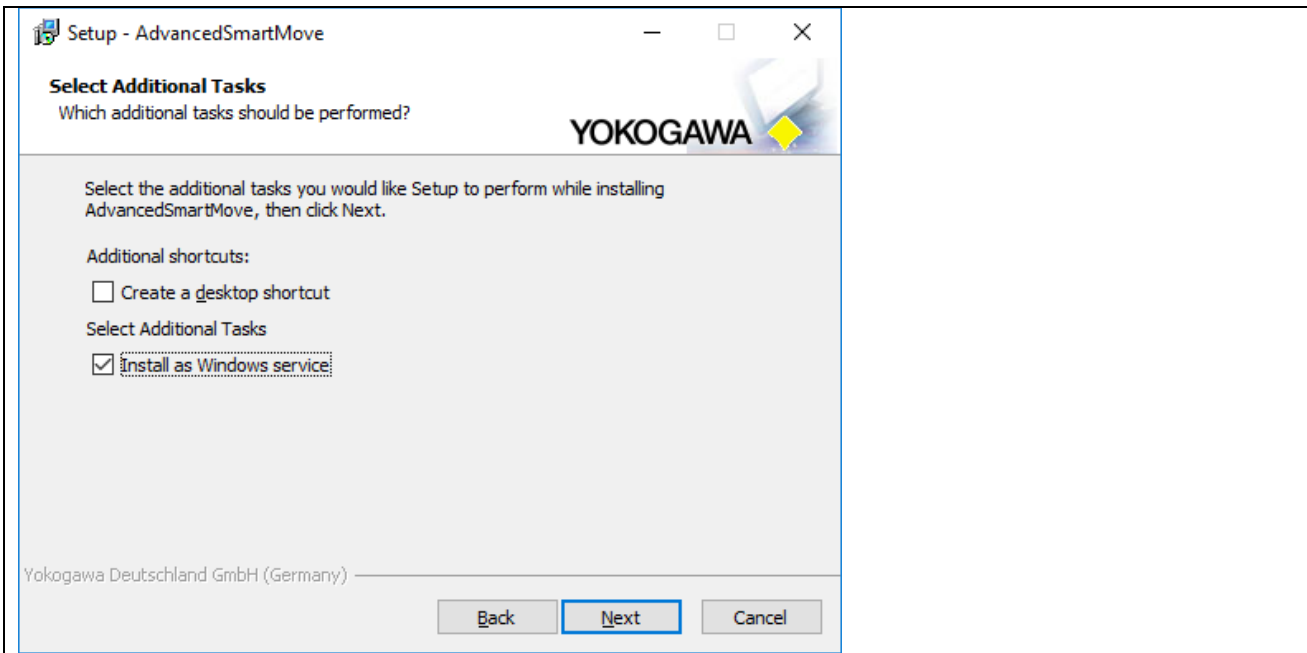
Select option

Select the installation option and confirm the selection with the button “Next”. Use the full installation for the best result.



Start menu name

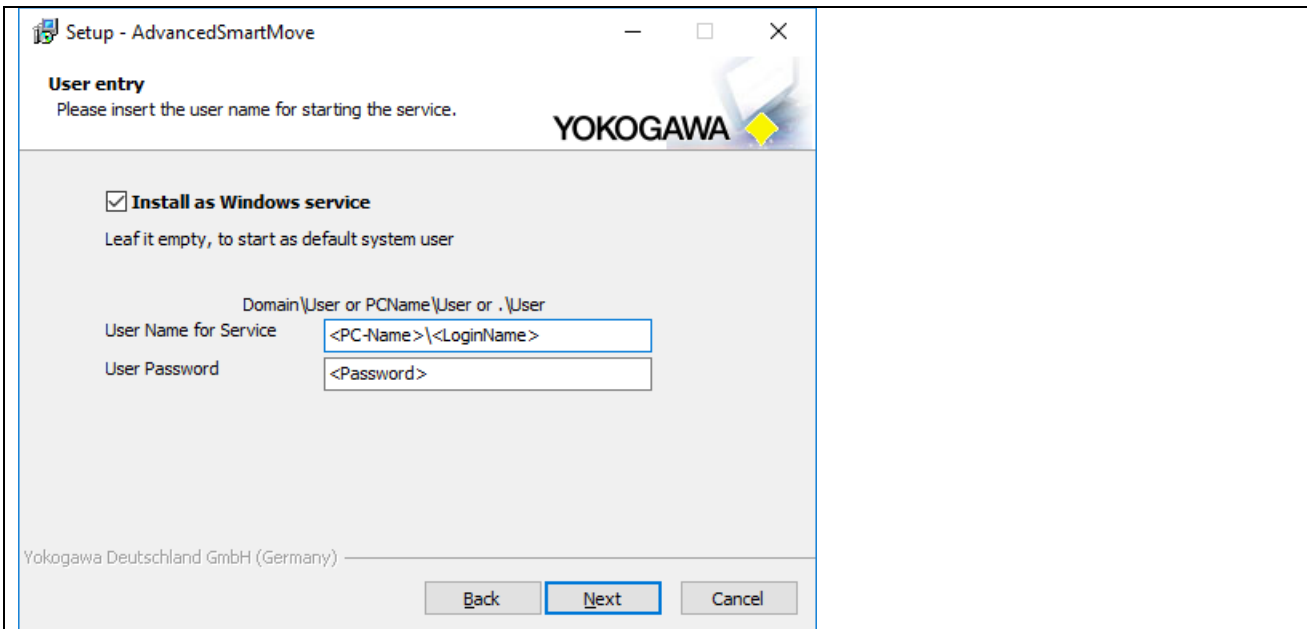
Select the additional task shortcuts activation and confirm it with the “Next” button.



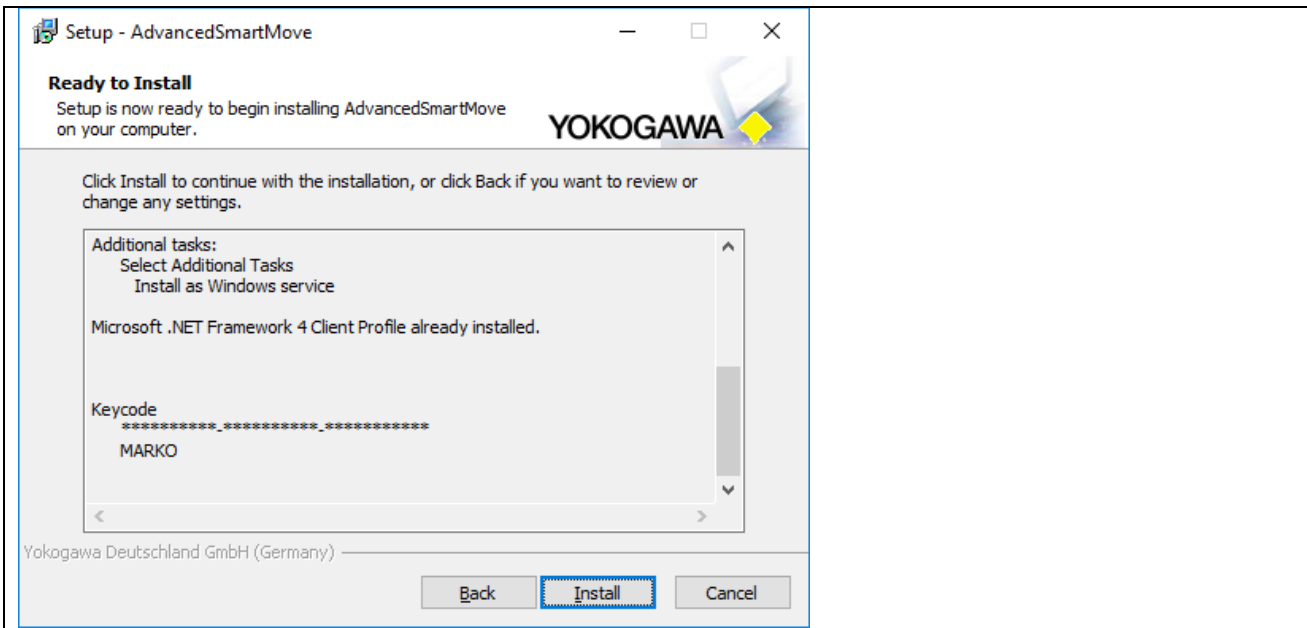
Addition task shortcuts

In the following abstract the listing of the selections made is displayed and can be confirmed by the button "Install".

If checkbox "Install as Service" checked, the following Form will be shown, otherwise not.

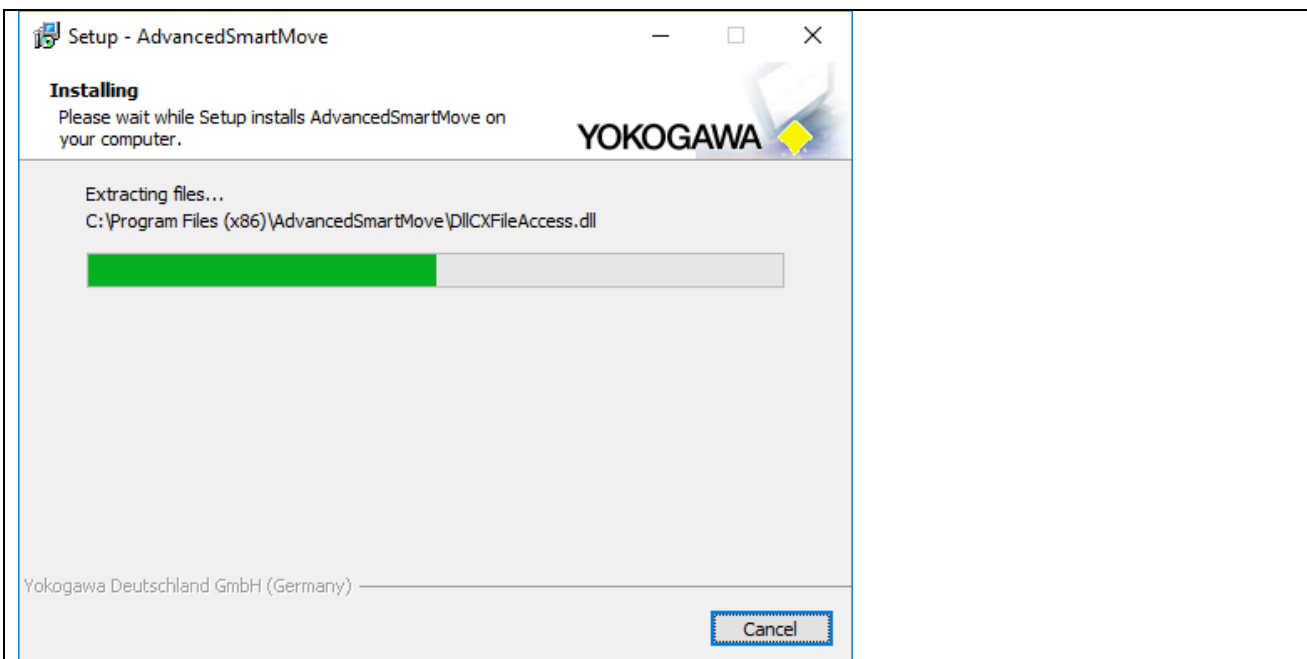


Installation as Service

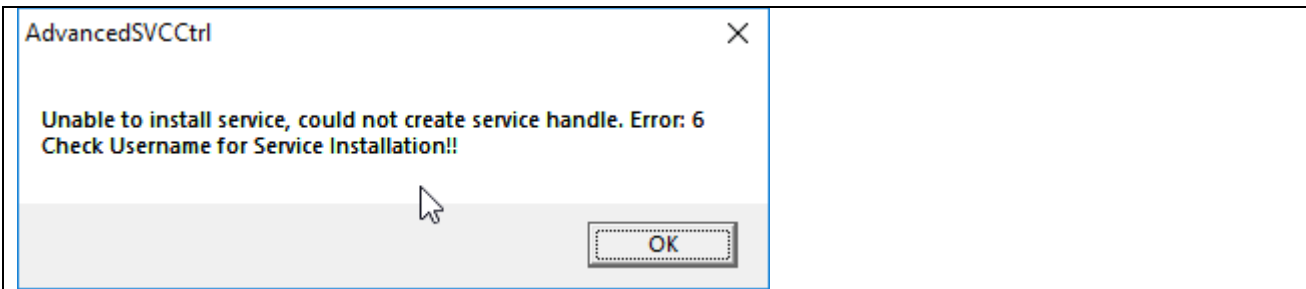


Abstract

The installation of the program starts. With the “Abort” button it is possible to stop the installation.

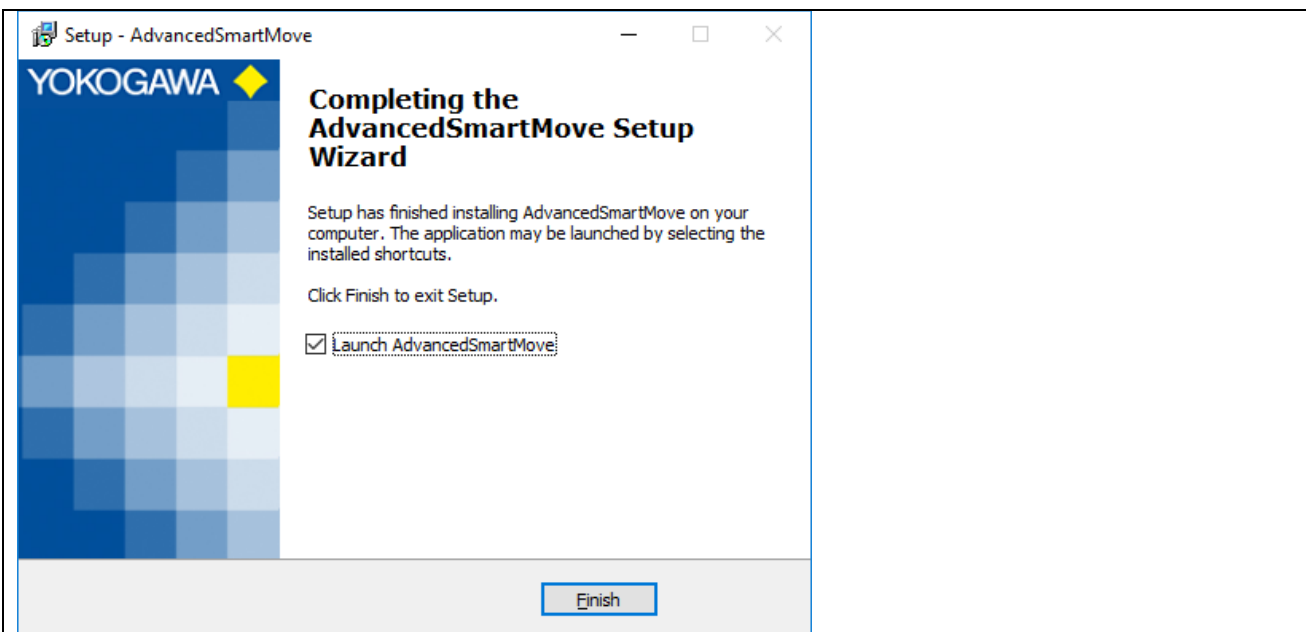


Installation



Message, if the Service couldn't install, please check the Server installation Chapter!

After installation the button "Finish" must be pressed.



Finish Installation

The program can now be started from Start → Programs → AdvancedSmartMove → AdvancedSmartMove.

9. Windows FTP server installation

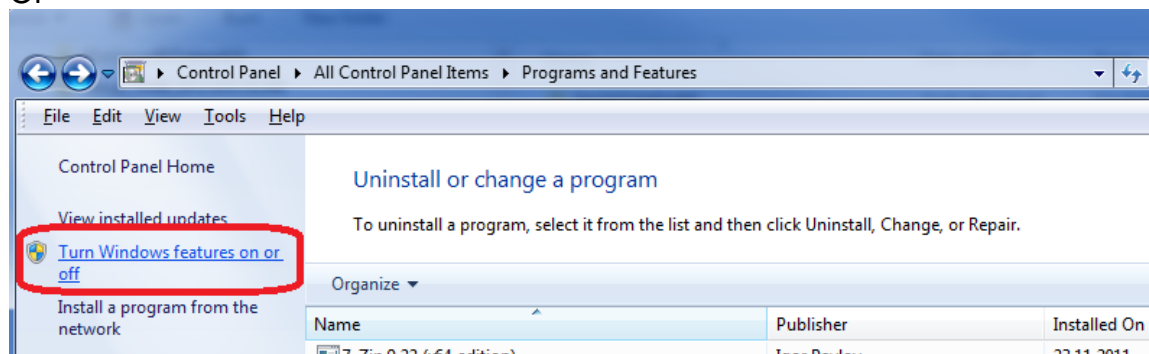
- Open the Windows control panel via START > SETTINGS > CONTROL PANEL
- Select PROGRAMS



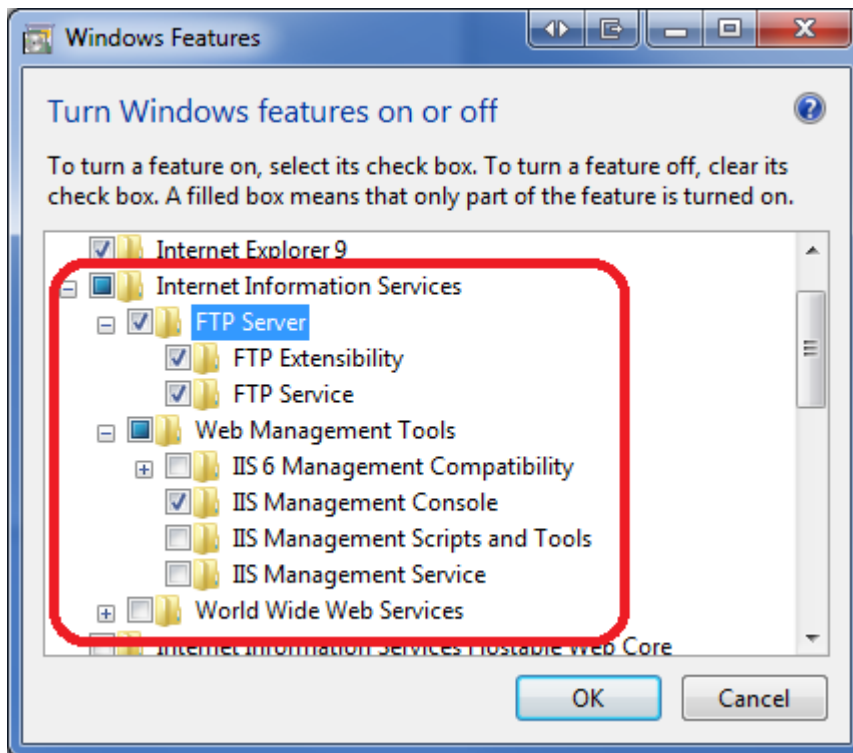
- Select on the left side of the screen the “Add/Remove Windows Components” button



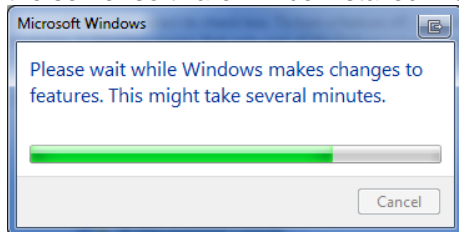
Or



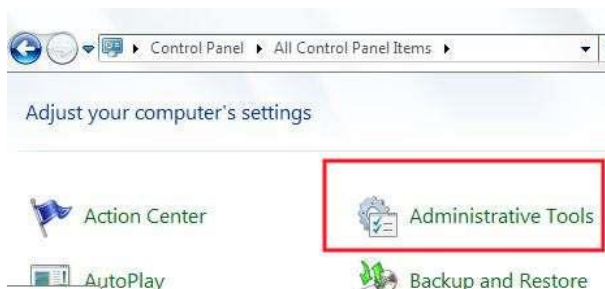
- Select “Internet Information Services (IIS)” and select the DETAILS button. Ensure that the options as shown in the following picture are selected.

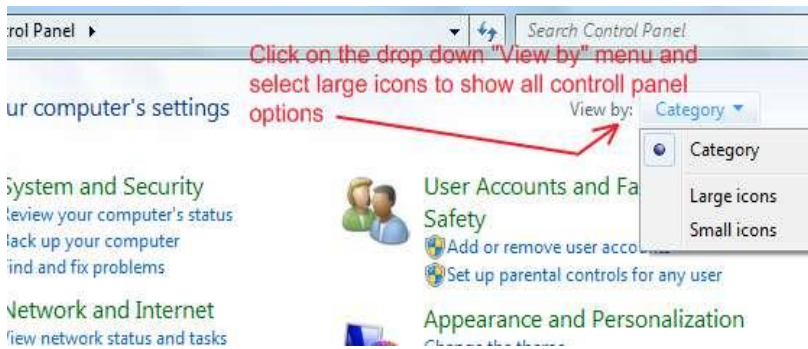


- After confirming your selections by pressing the OK button select NEXT in the previous screen. Now the server software will be installed. For this you do need sometimes the official Windows 7 CD.



- After completing the installation open the control panel START > SETTINGS > CONTROL PANEL
- Open the Control Panel on your system. And click on **Administrative Tools**. In case you are unable to locate Adminstrative Tools in the control panel, you may need to switch to 'View all control panel items' from the "View by" menu at the top right in your control panel window.

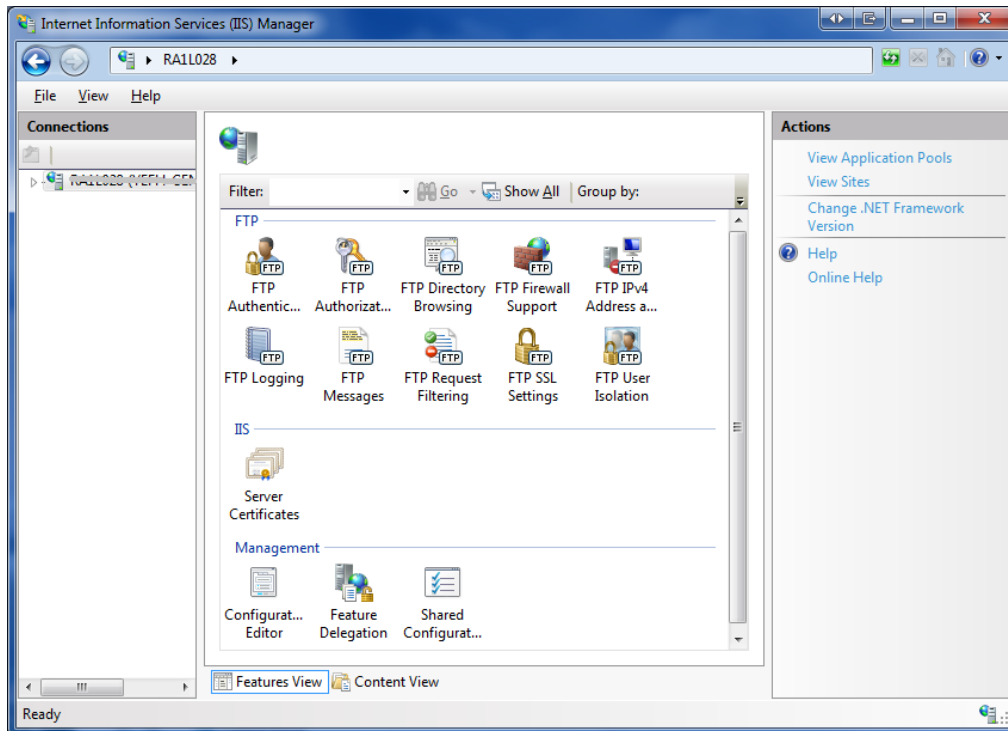




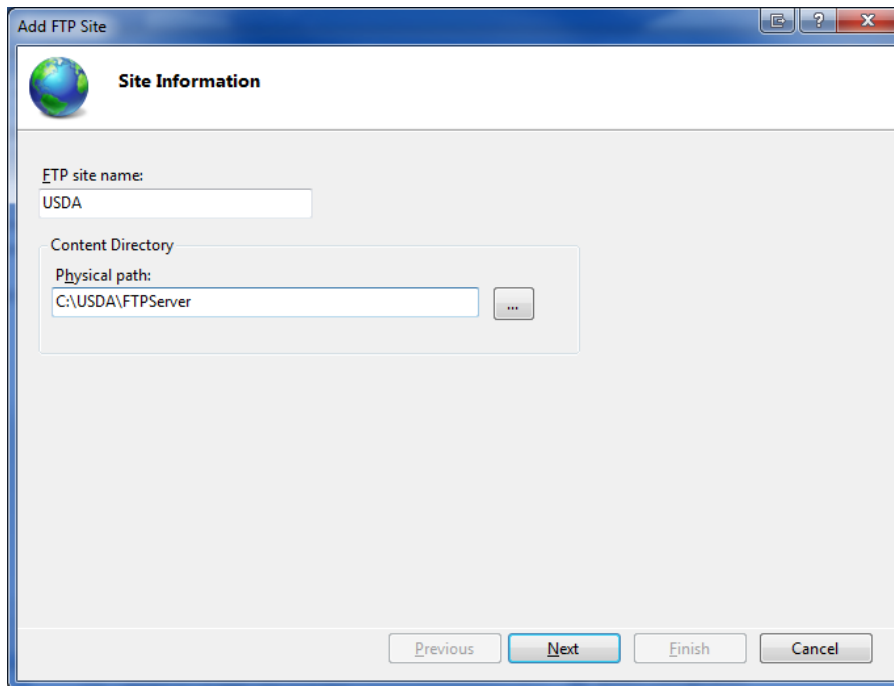
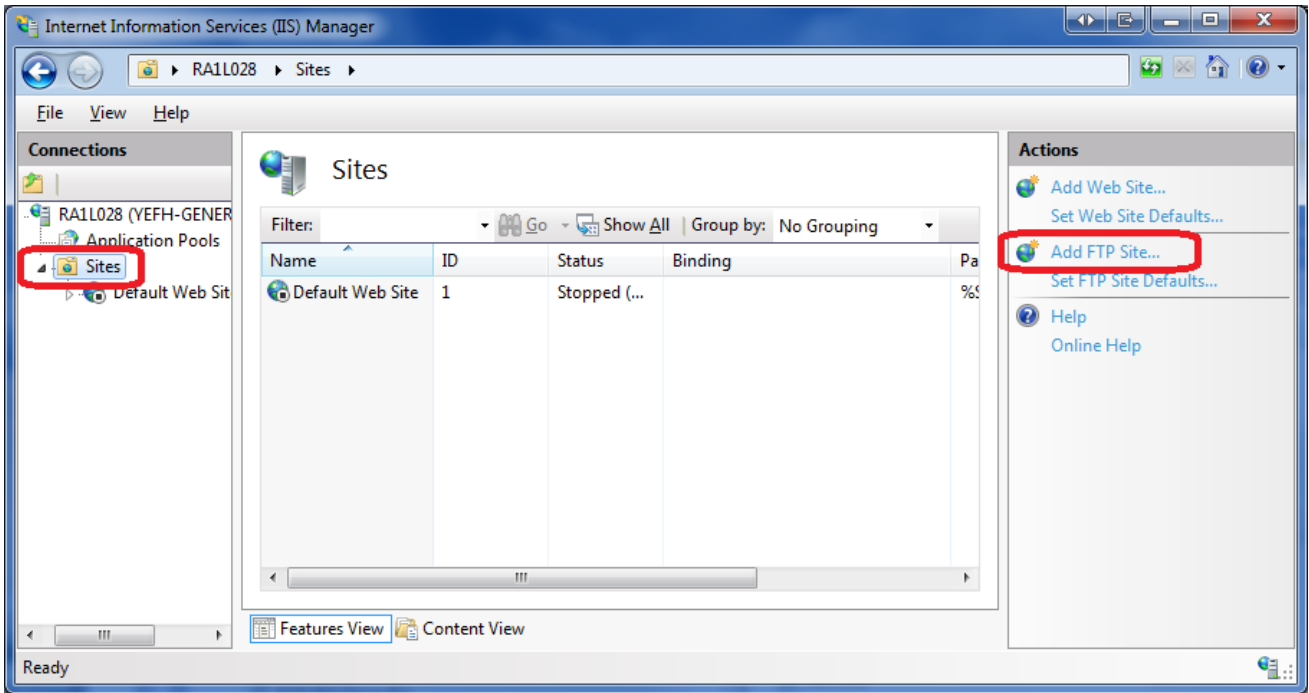
- In the Administrative Tools windows, locate "Internet Information Services Manager" and click on it. You can now see a new window with lot of settings / options in it categorised separately under FTP and IIS.

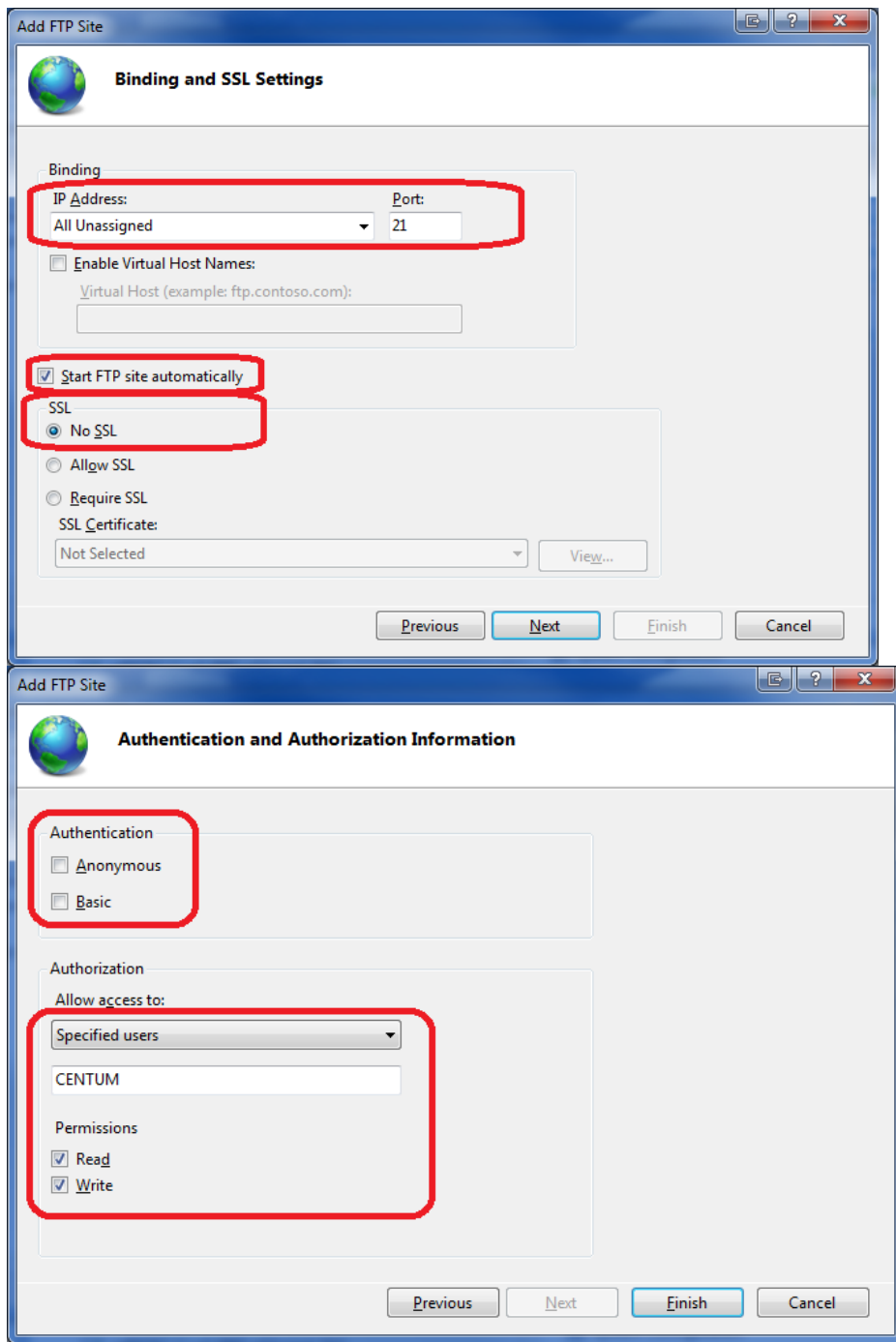


- Double click "Internet Information Services" to see the IIS status. After selecting the folder "FTP Sites" you will see in the right side of the screen the state of the "Default FTP Site" that should "Running".

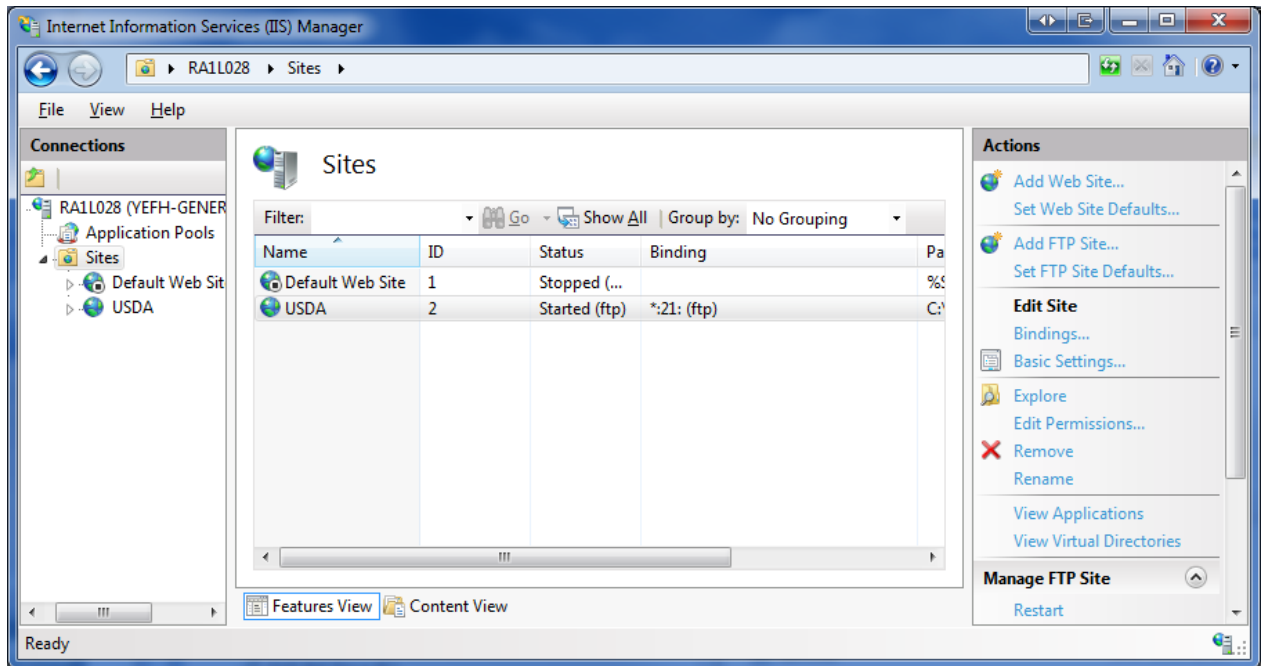


- To create a FTP site please start the FTP wizard.

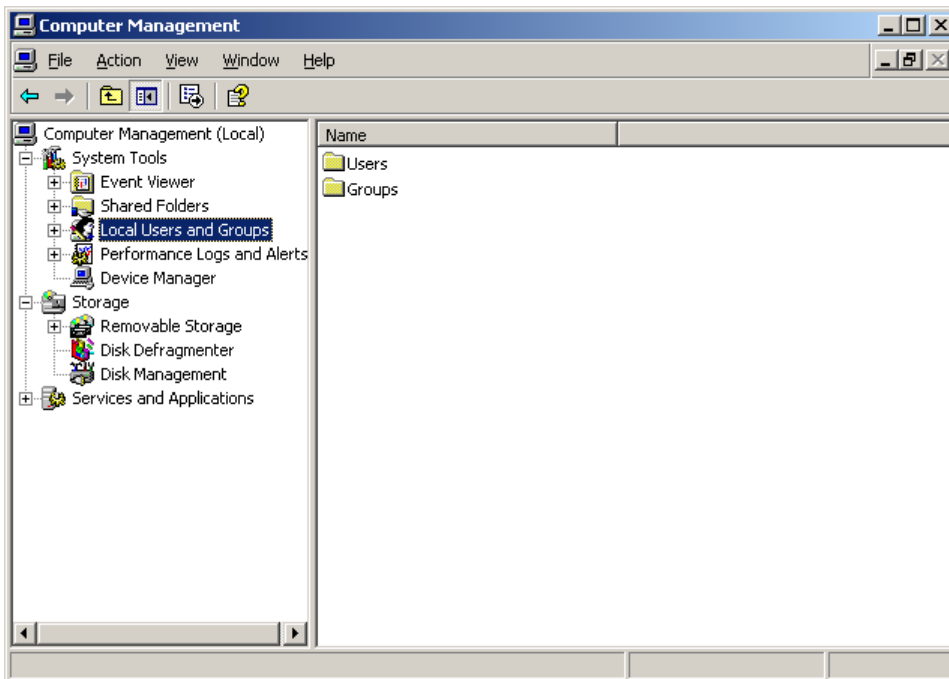




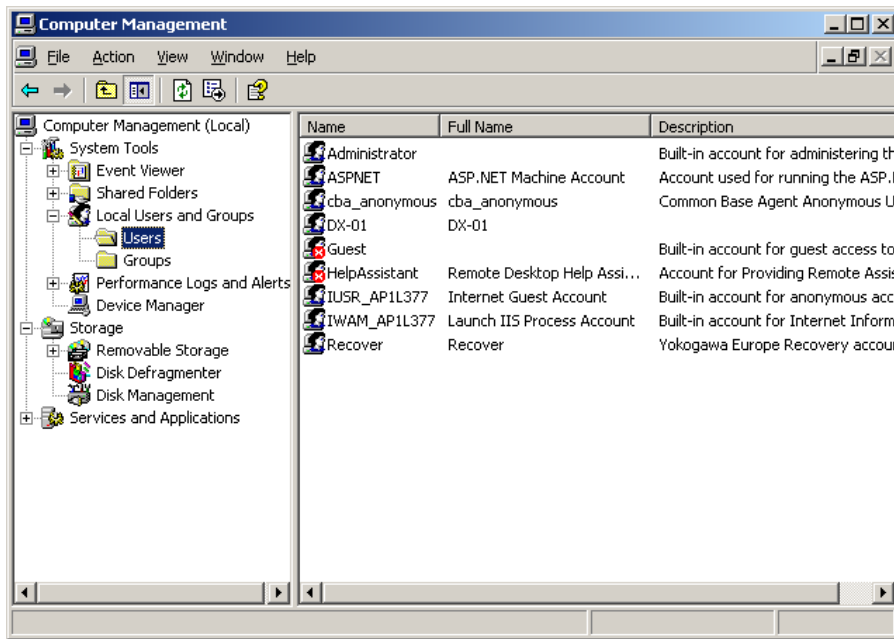
- Confirm your settings by pressing Finish and close the ISS status window.



- In the “Administrative Tools” window now double click “Computer Management”.



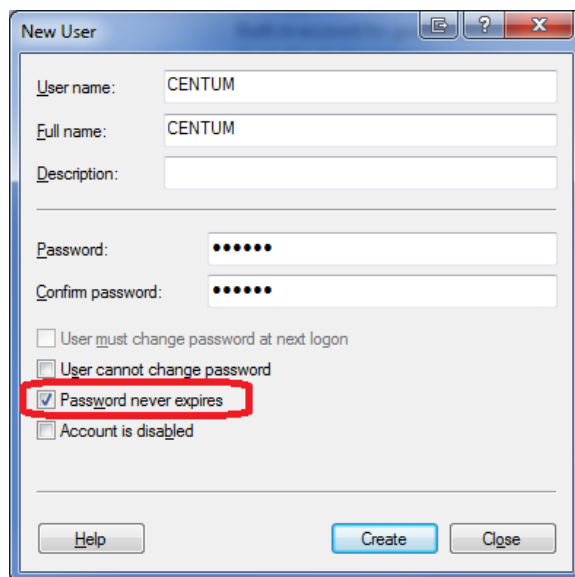
- In this new window double click on “Local Users and Groups” to open the folders Users and Groups. Now select the folder User. In the right window a list of all registered users is shown.



- We do need to register DAQSTATION as a new user. For this press in the toolbar ACTION > NEW USER. Now a new window will open and fill in the following data;

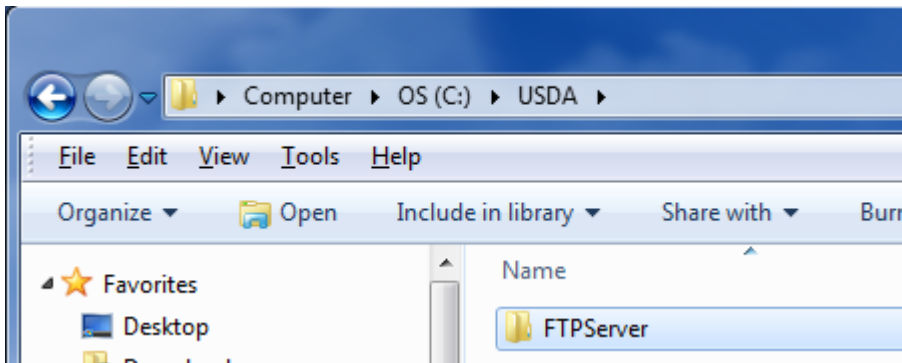
User name : CENTUM
Full name : CENTUM
Description :
Password : <Your Password>
Confirm password : <Your Password>

After this remove the check for “User must change password at next login” and do check “Password never expires”.

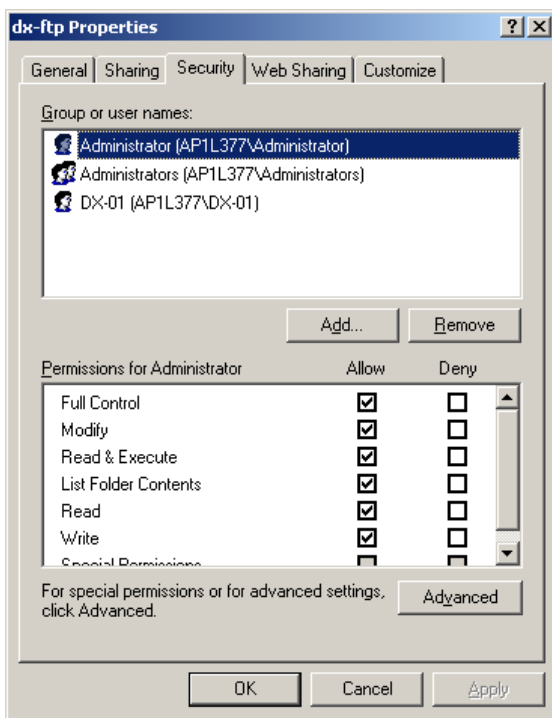


- Now confirm your settings by selecting CREATE and after that close the window by pushing the CLOSE button. The new user CENTUM will now show up in the list.

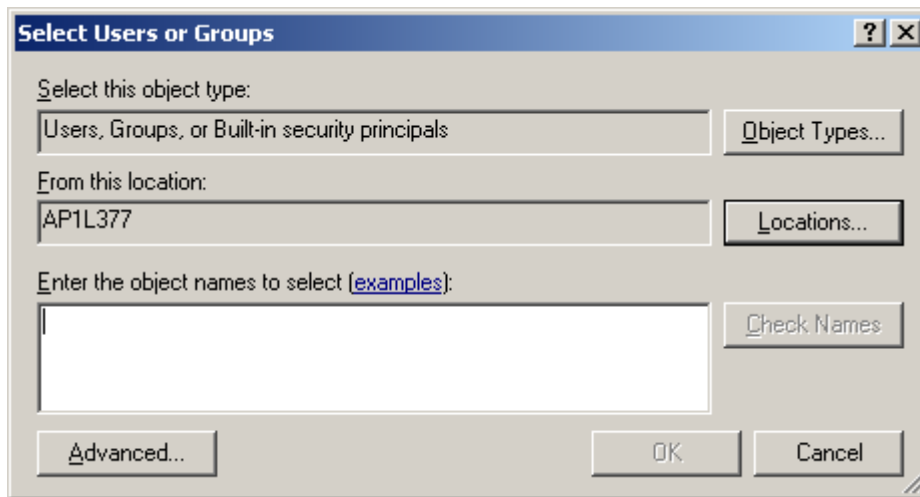
- Close all open windows and start windows explorer. In the explorer select the folder C:\USDA\FTPServer. Create in this folder a new folder with the name dx-ftp.



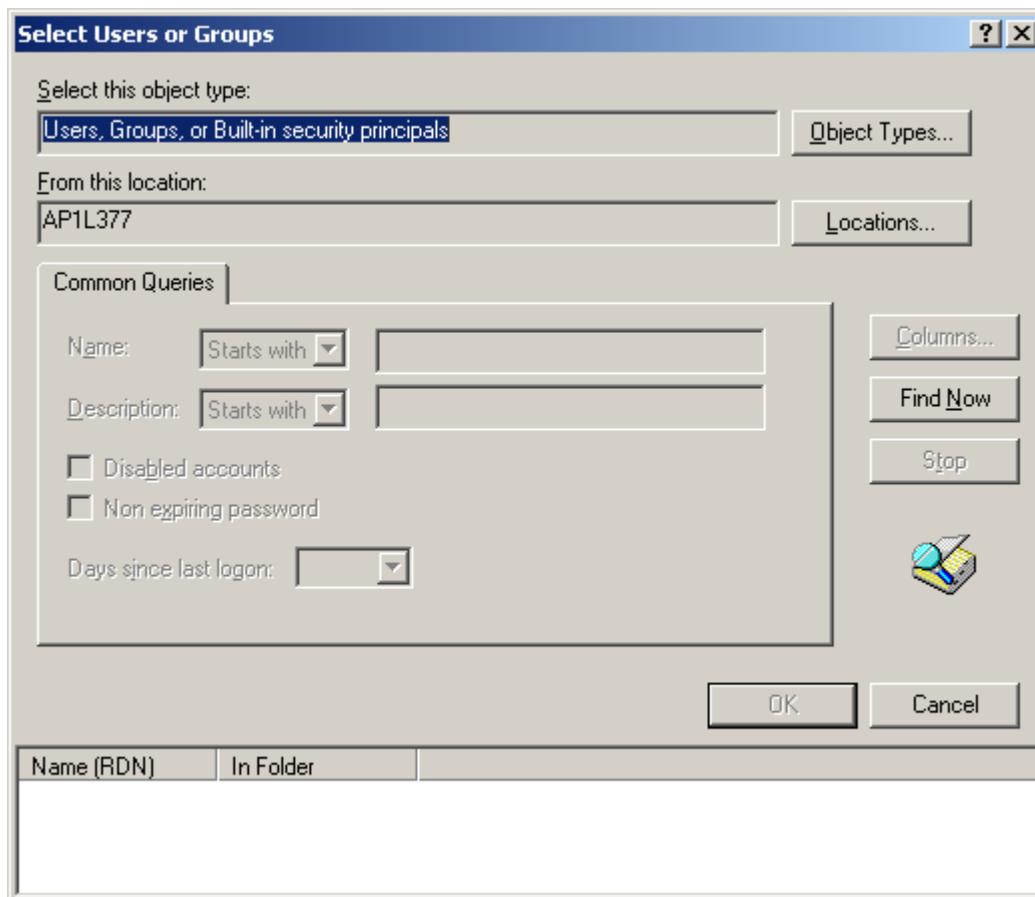
- Now select the new folder and by right clicking it open the properties of the folder. After this select the SECURITY tab.



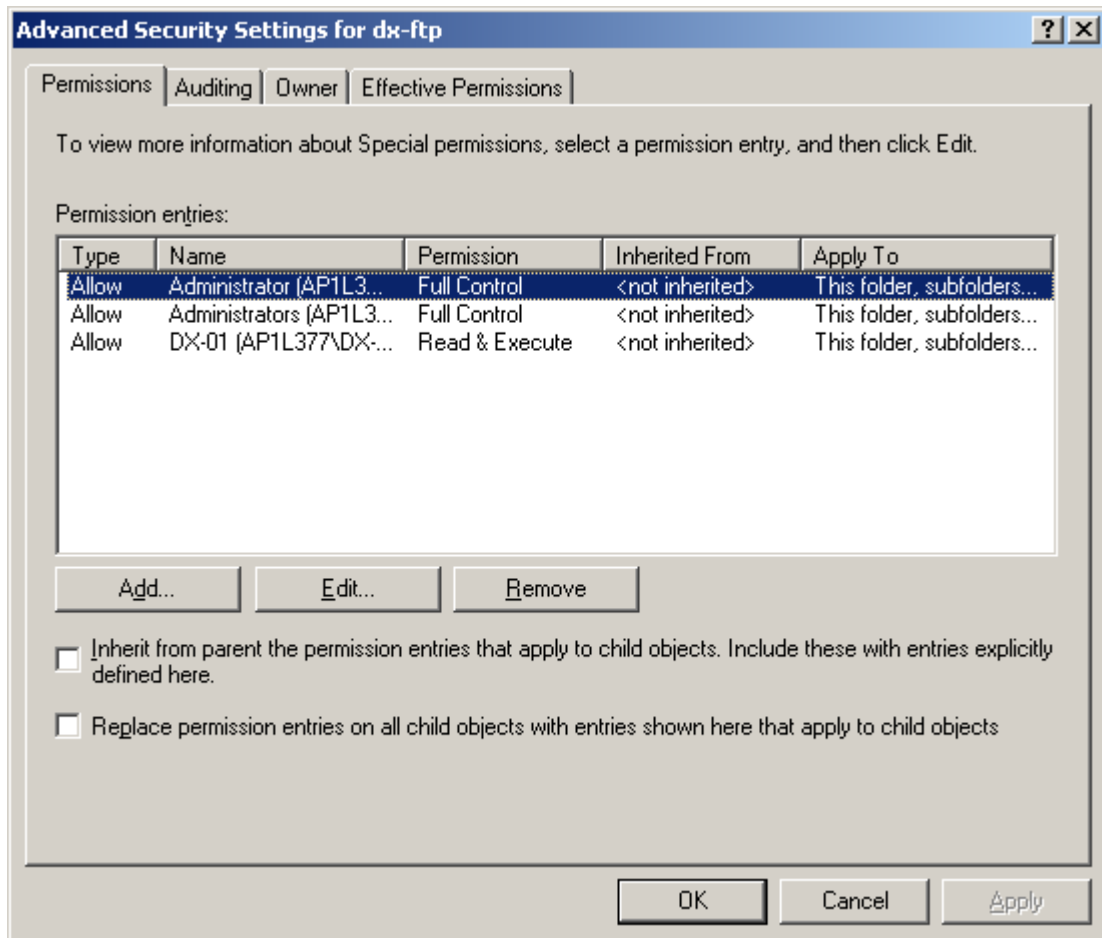
- First remove all users from the shown list. Then click the ADD button. Ensure that in the “From this location” line the name of your computer is mentioned.



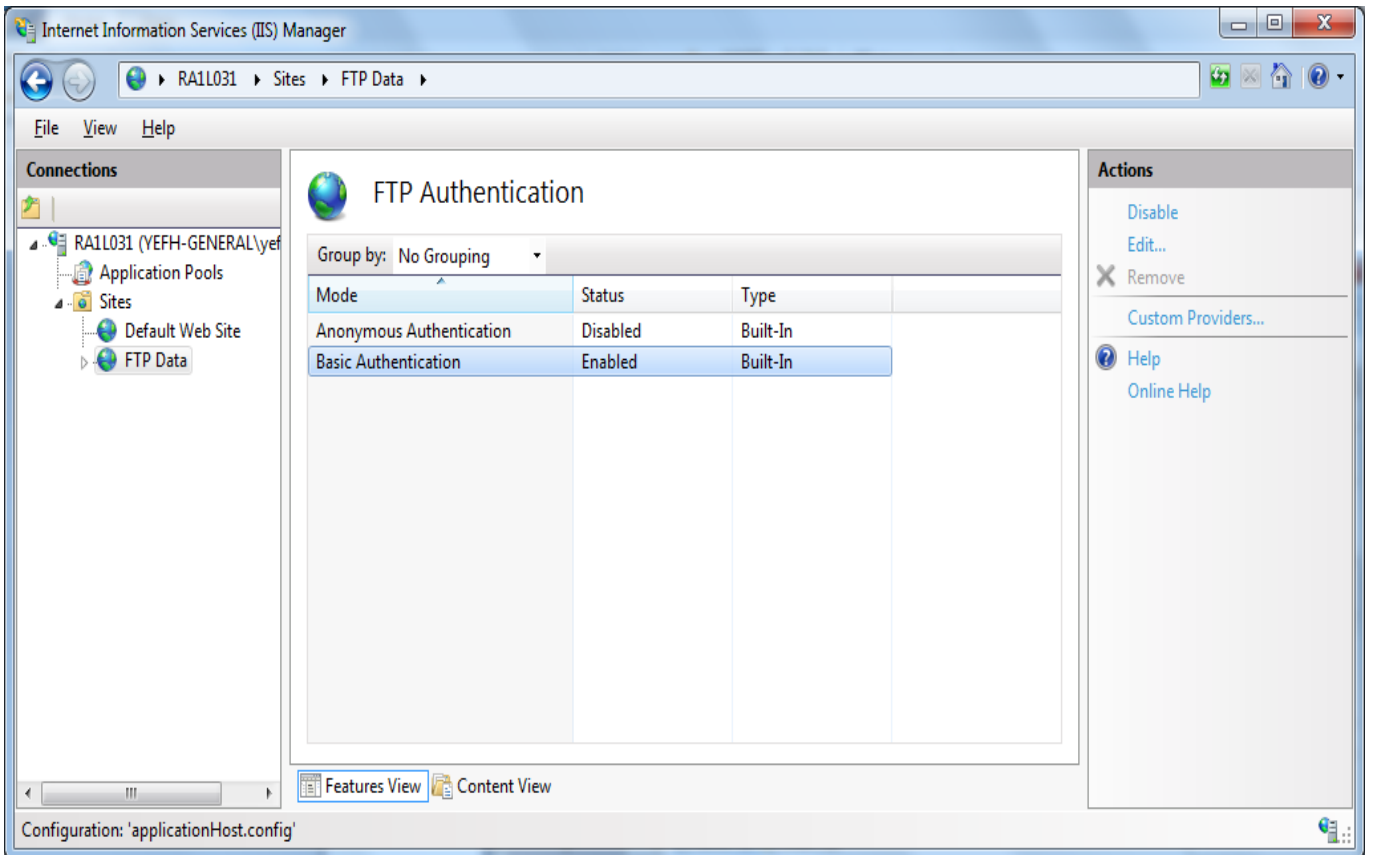
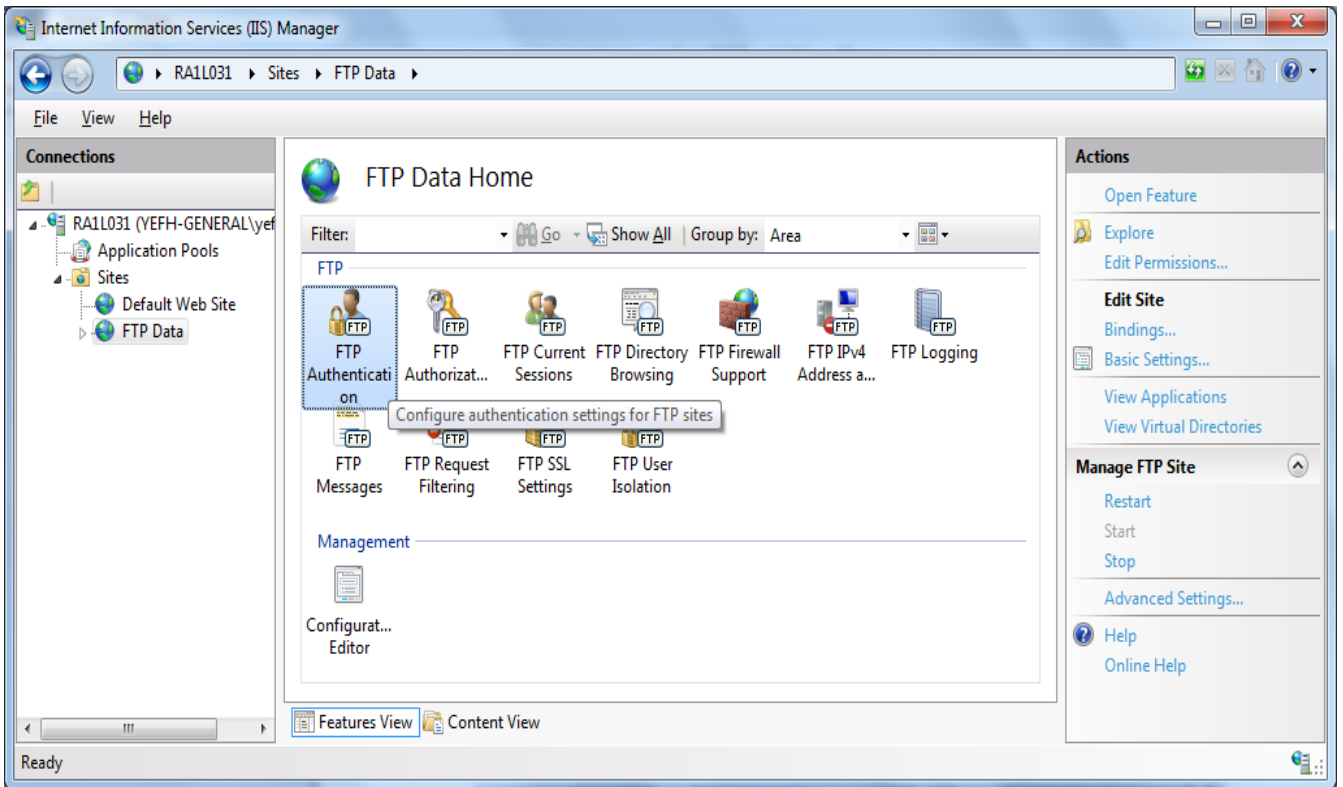
- Click the ADVANCED button.



- Click the FIND NOW button. After this a list of users is shown in the lower part of the screen. Here select the new user and select OK. In the previous windows also select OK.
- In the dx-ftp properties window select the ADVANCED button.



- In the PERMISSIONS tab of this window both optional selections must NOT be selected. And confirm your setting by selecting the OK button twice.
- The FTP server software is now installed and ready for use.



9.1 Test FTP Function / Testing the FTP Transfer

You can test whether a test file can be transferred from the DX to an FTP server.

◇ Press FUNC and select FTPtest

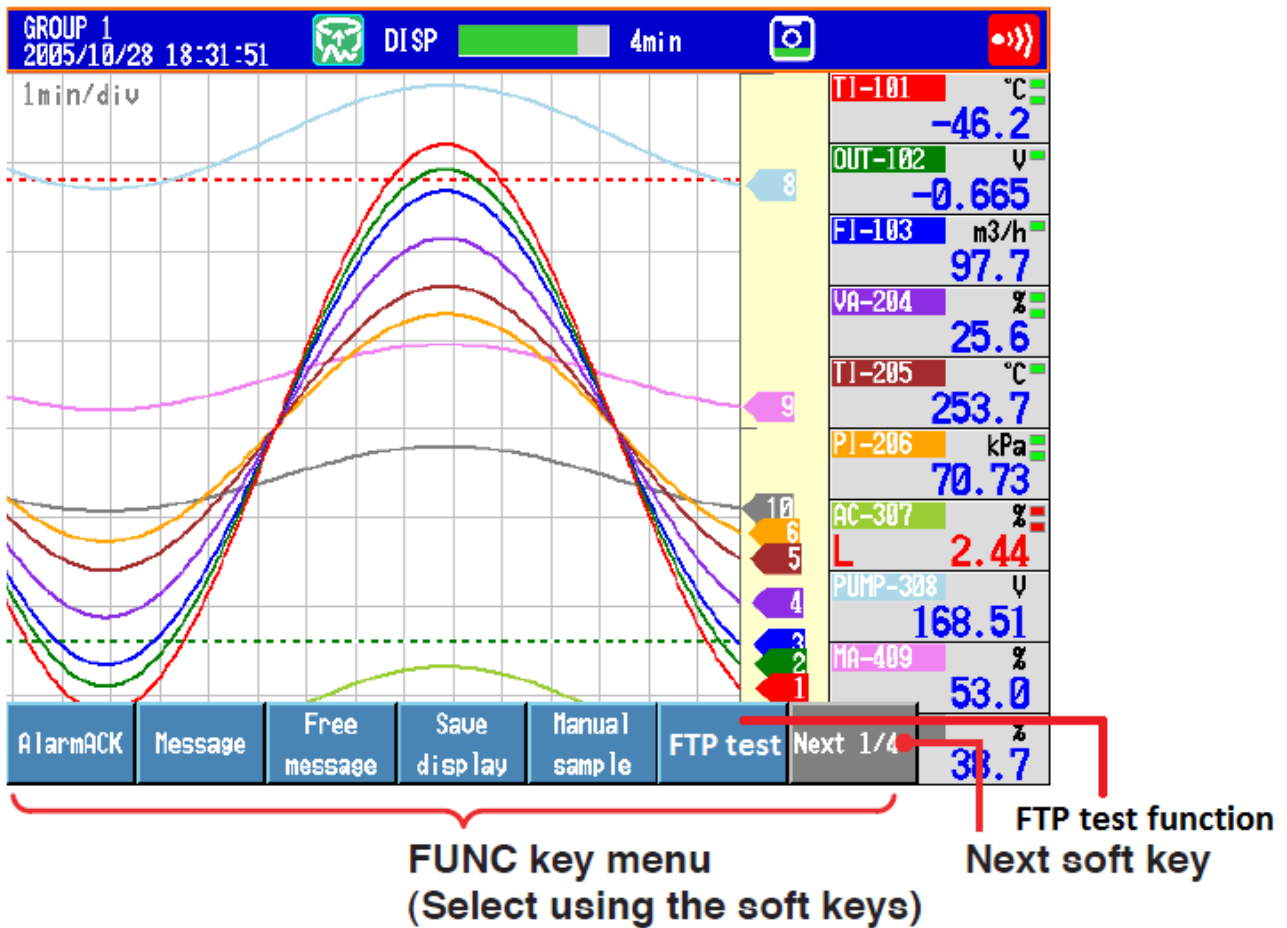
Items to check before performing this test

- Connect the Ethernet cable correctly. For the connection procedure, see section 1.3.
- Check that the Ethernet interface settings are correct. For the procedure, see section

Checking the results of the FTP test

- When an FTP test is executed, a test file named FTP_TEST.TXT is transferred to the directory indicated by the initial path at the FTP destination specified in this section.
- The result of the FTP test can be confirmed by displaying the FTP log

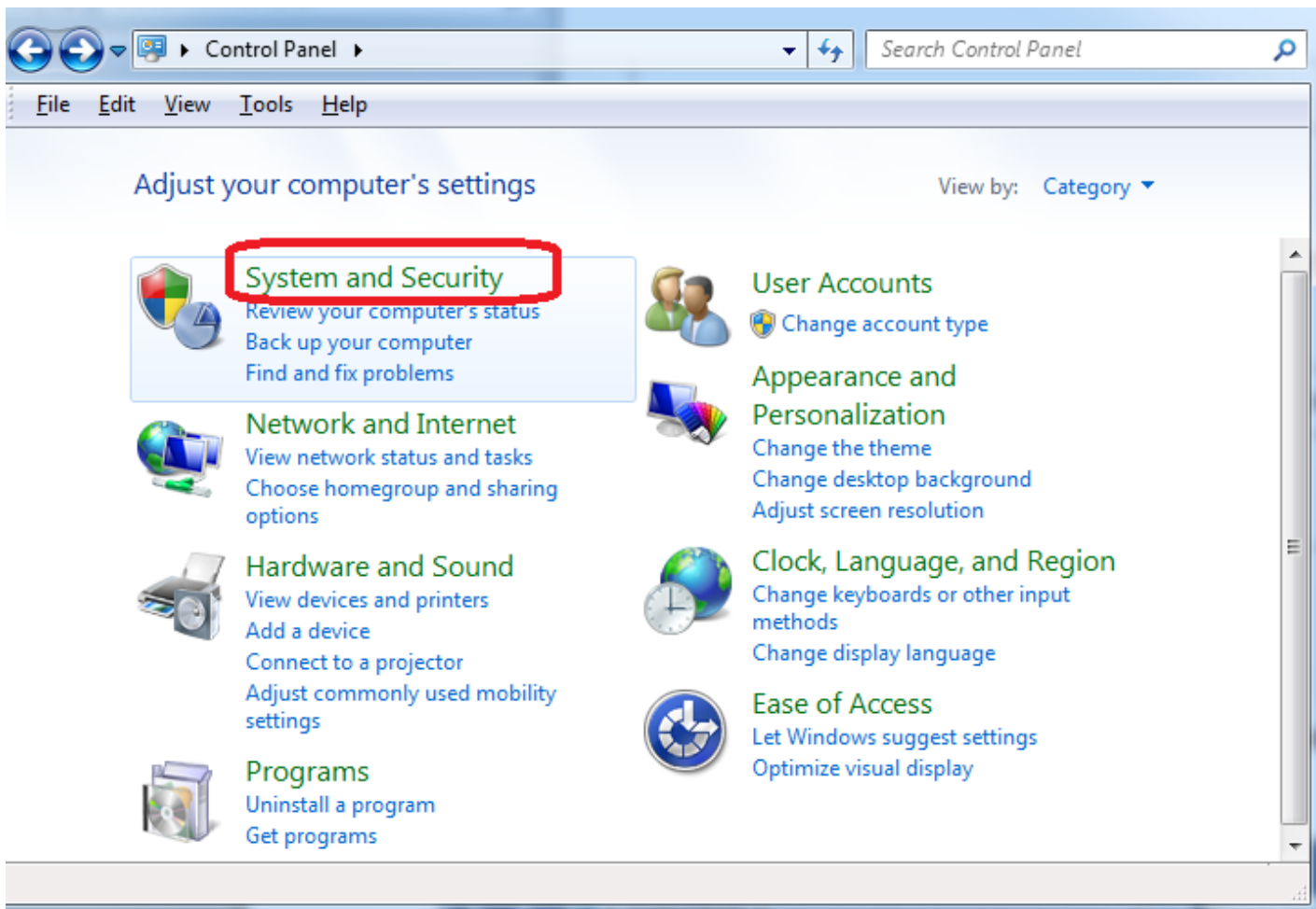
Press FUNC to display the FUNC key menu at the bottom of the screen. Press the Next soft key to switch the menu. Press the desired soft key.



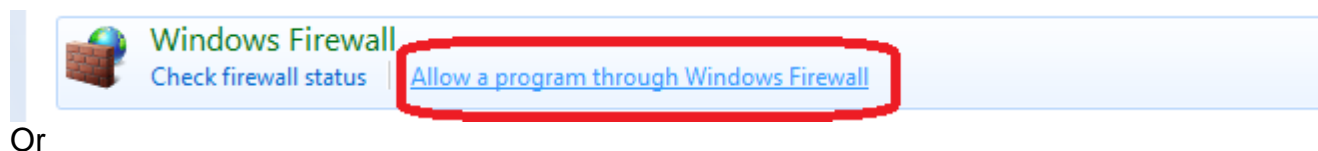
10. Windows Firewall

10.1 Windows

- Open the Windows control panel via START > SETTINGS > CONTROL PANEL
- Select **System and Security**



- Select on the left side of the screen the “Allow a program through Windows firewall” button



Allow programs to communicate through Windows Firewall

To add, change, or remove allowed programs and ports, click Change settings.

[What are the risks of allowing a program to communicate?](#)



Allowed programs and features:

Name	Domain	Home/Work (Pri...	Public	Group Policy
<input type="checkbox"/> Ditto	<input type="checkbox"/>	<input type="checkbox"/>	<input checked="" type="checkbox"/>	No
<input type="checkbox"/> Ditto	<input type="checkbox"/>	<input checked="" type="checkbox"/>	<input type="checkbox"/>	No
<input checked="" type="checkbox"/> File and Printer Sharing	<input checked="" type="checkbox"/>	<input checked="" type="checkbox"/>	<input checked="" type="checkbox"/>	No
<input checked="" type="checkbox"/> FTP	<input checked="" type="checkbox"/>	<input checked="" type="checkbox"/>	<input checked="" type="checkbox"/>	No
<input type="checkbox"/> HomeGroup	<input type="checkbox"/>	<input type="checkbox"/>	<input type="checkbox"/>	No
<input type="checkbox"/> iSCSI Service	<input type="checkbox"/>	<input type="checkbox"/>	<input type="checkbox"/>	No
<input type="checkbox"/> Key Management Service	<input type="checkbox"/>	<input type="checkbox"/>	<input type="checkbox"/>	No
<input checked="" type="checkbox"/> LANDesk Message Service	<input checked="" type="checkbox"/>	<input type="checkbox"/>	<input type="checkbox"/>	No
<input checked="" type="checkbox"/> LANDesk Ping Discovery Service	<input checked="" type="checkbox"/>	<input type="checkbox"/>	<input type="checkbox"/>	No
<input checked="" type="checkbox"/> LANDesk Remote Control Agent	<input checked="" type="checkbox"/>	<input type="checkbox"/>	<input type="checkbox"/>	No
<input checked="" type="checkbox"/> LANDesk Targeted Multicast	<input checked="" type="checkbox"/>	<input type="checkbox"/>	<input type="checkbox"/>	No

[Details...](#) [Remove](#)

[Allow another program...](#)

[OK](#) [Cancel](#)

Edit a Port

Use these settings to open a port through Windows Firewall. Choose a meaningful name you'll remember. To find the port number and protocol, consult the documentation for the program or service you want to use.

Name:

Port number:

Protocol: TCP UDP

[What are the risks of opening a port?](#)

You can choose which network location types this port is open on.

[Network location types...](#) [OK](#) [Cancel](#)

11. Run Program as NT- Service

It is possible to start the program as a service. With this it is not necessary to login on the computer. It starts automatically with Windows.

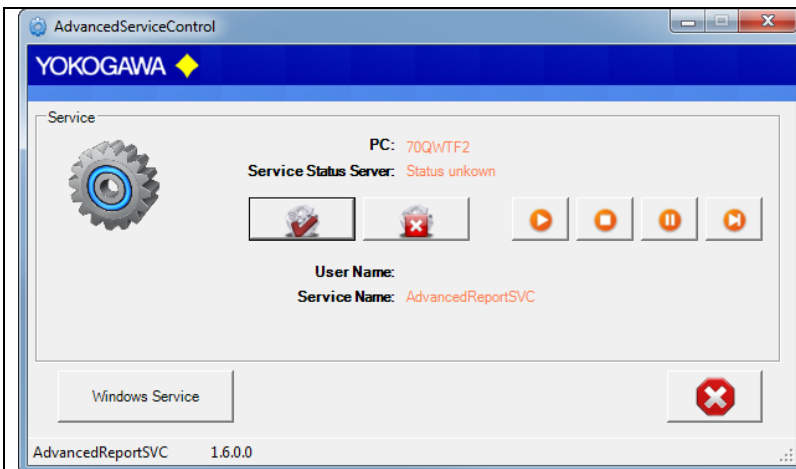


Note:

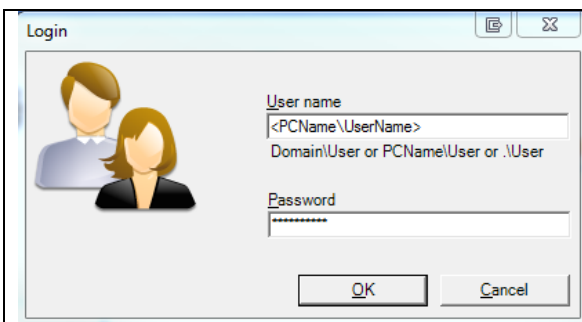
Also, the FTP Server must run as a Service!

11.1 Installation

Change to the Settings register. The Button „Install“ add the service „AdvancedSmartMoveSvc“ into the control panel. The Button „Start“ activate the Service. The service start as „System“ User in Automatic Mode. By changing the settings, it will be activate with a new folder scan.

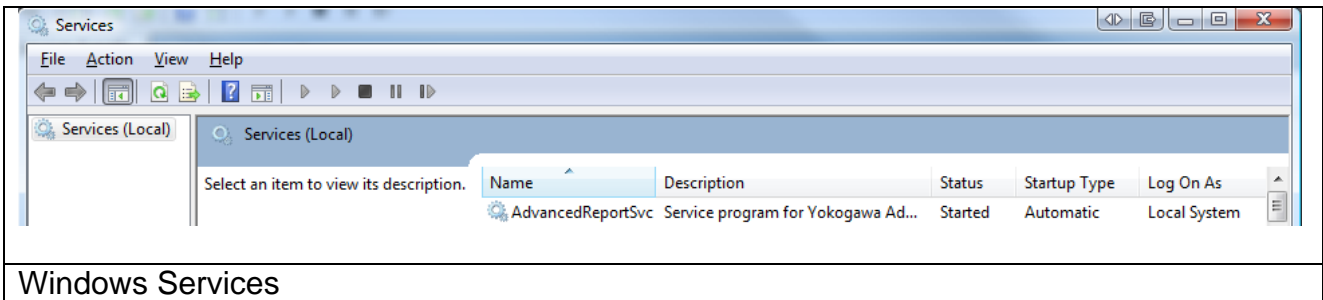


Install Service in AdvancedSmartMoveSVC



Install the Service as User

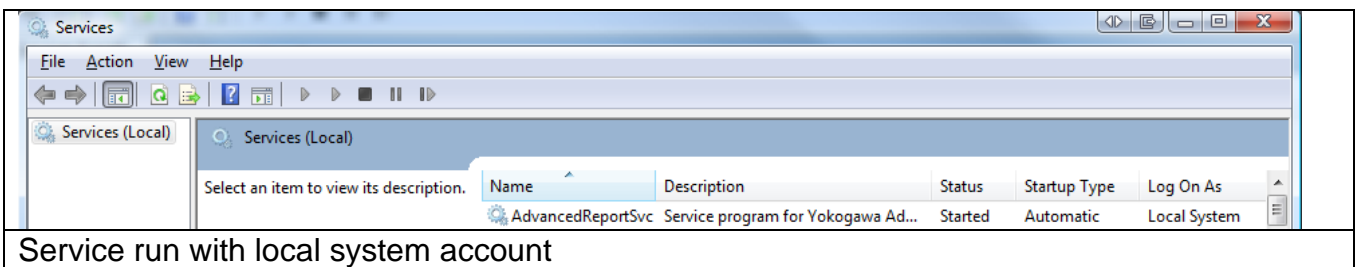
The messages are sent to the Windows event logger (Control Panel → Administrative Tools → Events).



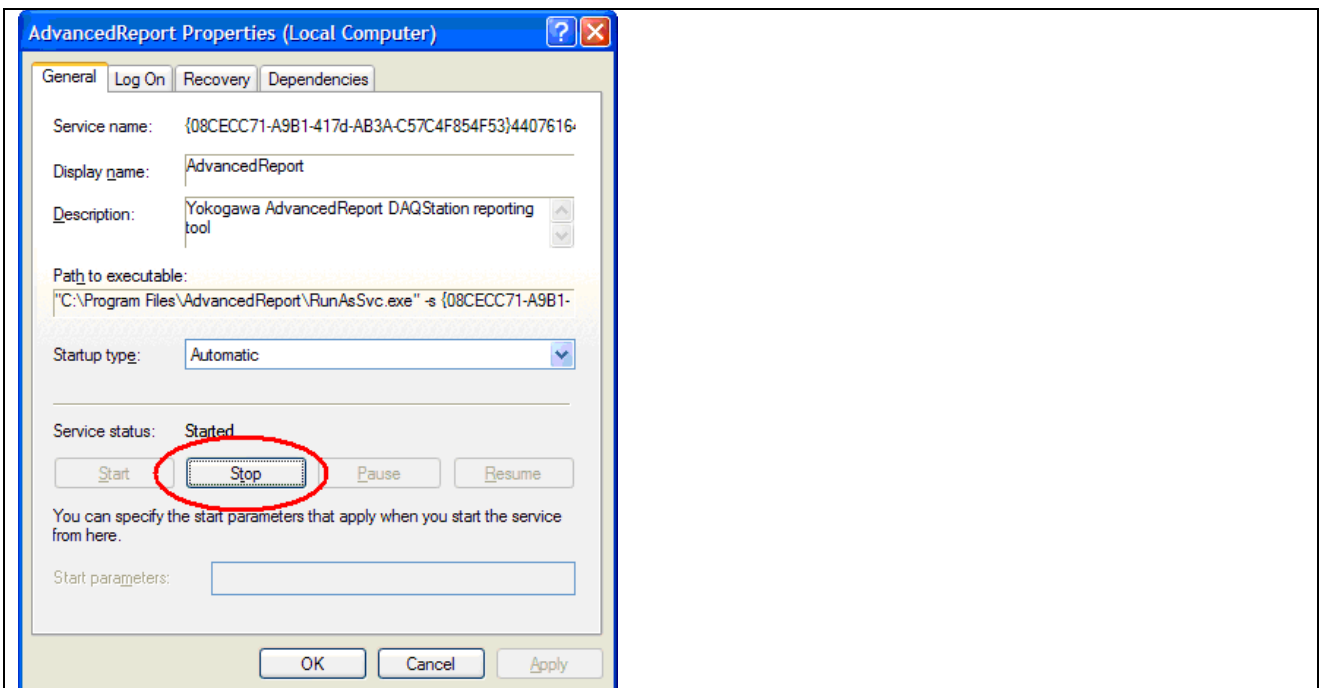
Windows Services

11.1.1 Change the settings for the service:

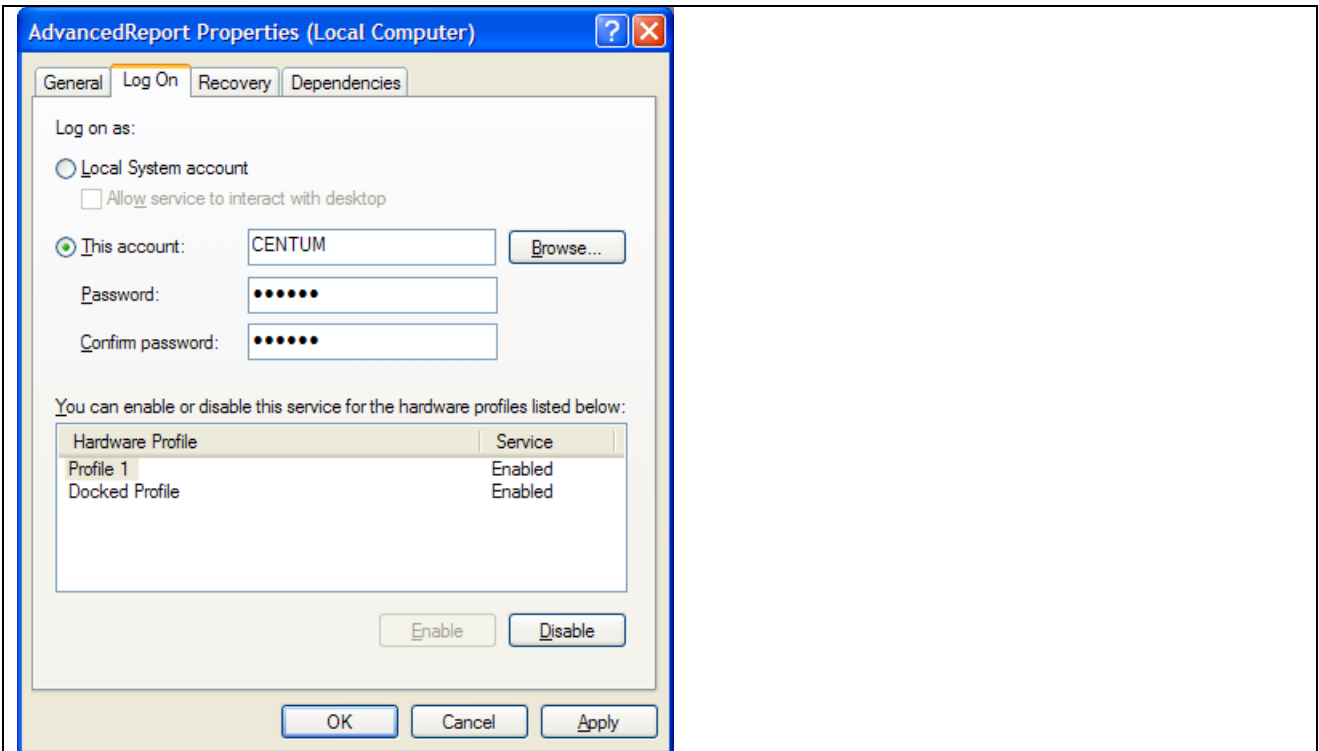
Control Panel → Administrative tools → Services



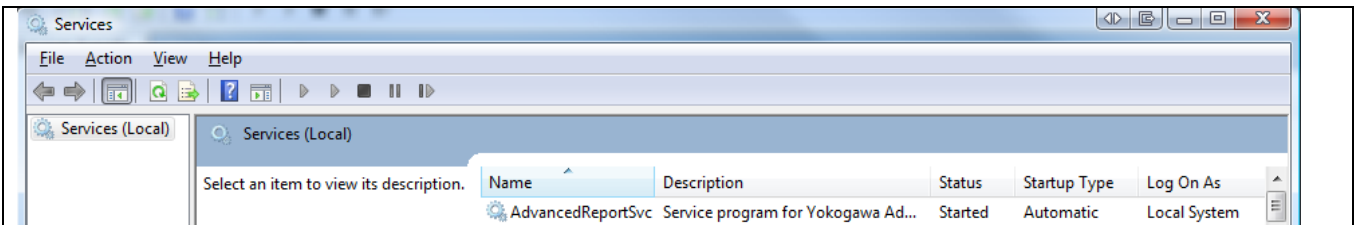
Service run with local system account



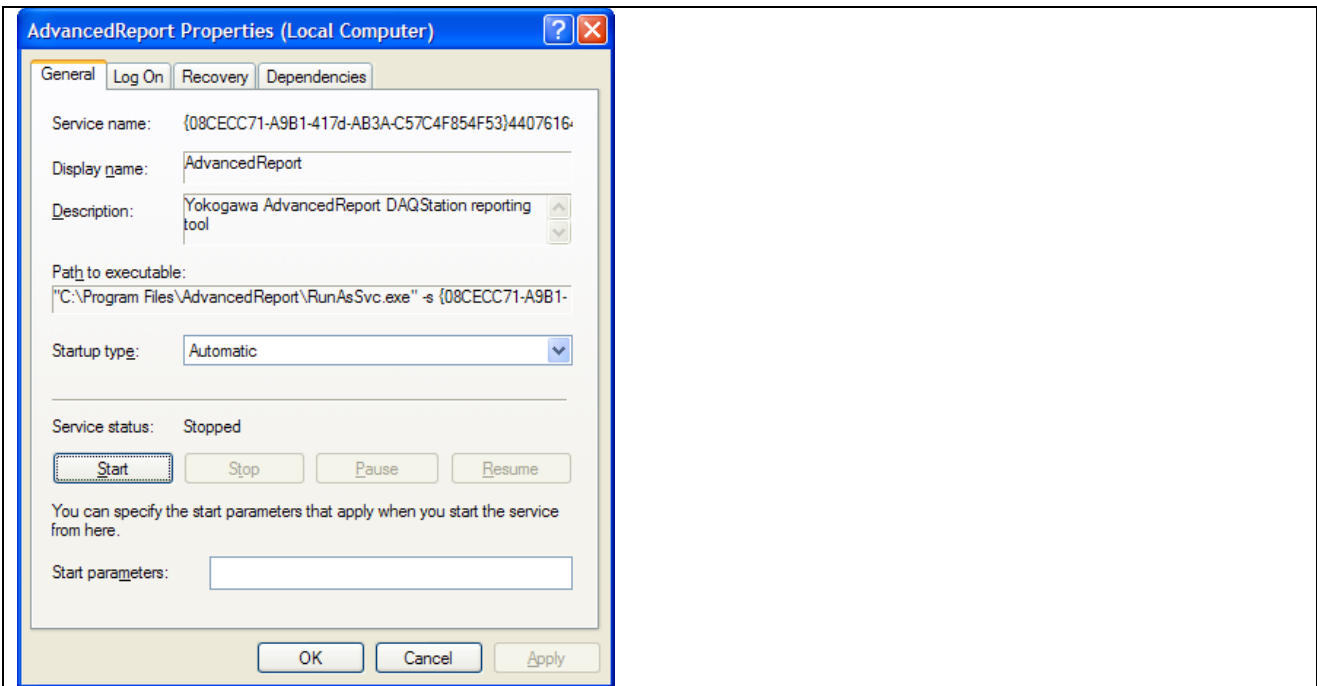
Stop the service



Change from System-account to local user account
In this example we use the local user "CENTUM"



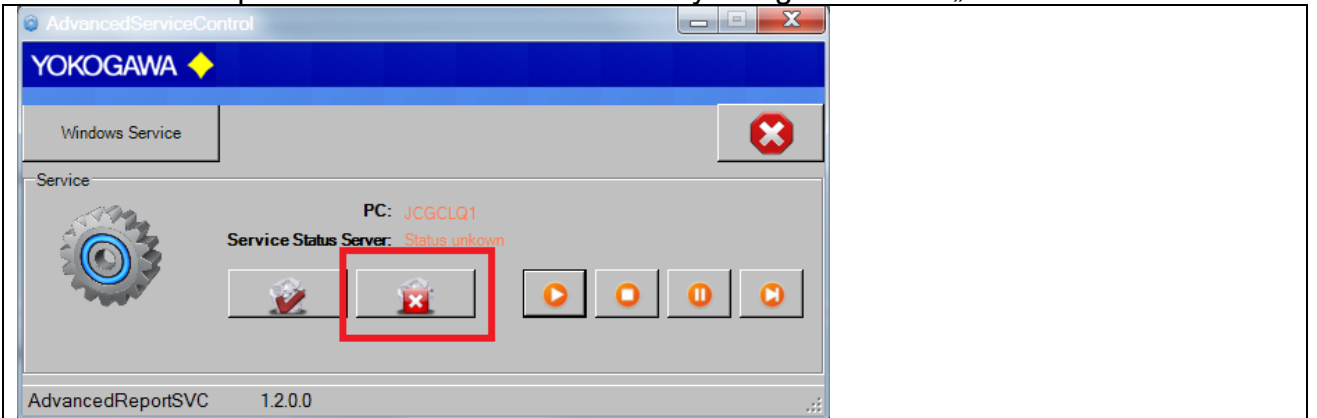
Service run with local user account



Restart the service

11.2 De-Installation Service

Change to the Settings register. The Button „Stop“ stopped the service. After stopping the service it is possible to deinstall the servie by using the button „Un-Install“.



Stopp and Deinstall

12. De-installation Program

The de-installation can be done by the uninstall-routine of Windows. To be found under Start → Settings → Control panel → Software.

13. More Solutions

Also available are helpful software products on our Website:
<https://www.AdvancedTools.de>