



AdvancedContent

YOKOGAWA Deutschland GmbH
Broichhofstraße 7-11
Germany 40880 Ratingen
Tel. +49 - 2102 - 4983 - 0

INDEX:

1. Introduction	3
2. Revision	4
3. System requirements	5
3.1 Prerequisite	5
3.2 Operating System	5
4. Installation preparation.....	5
4.1 Trial version	6
5. AdvancedContent: Context Menu Entry.....	6
6. Program.....	7
6.1 Functions	9
6.2 Options, License	11
7. Error handling	13
7.1 Known mistakes with Windows 7.....	13
7.2 Application crashed.....	14
8. More Solutions.....	14

1. Introduction

The program AdvancedContent performs a Windows Explorer Context Menu Add-In which supports the paperless Yokogawa Recorder / Data logger.

By selecting the Windows Context Menu Entry, the software shows a small cutout of the general file information. Also an implementation into the "Send To" context menu is integrated.

The Measurement Diagram is shown as a preview picture. It is possible to show the trend charts by selecting the Chanel no.

A condition for these functions is the presence of the data files, display data files and/or display event files in a folder on the Windows PC. Using the ftp client function of the Yokogawa recorders, it is possible to store the files on the PC. For further information please read operating instructions of the recorder.

Recorder	File extension	Data type
GX20 / GP20 [with /AS1 Pharma Option] www.smartdac.com	.GSD .GSE	Display Data Event Data
GX20 / GP20 www.smartdac.com	.GDS .GEV	Display Data Event Data
DX1000 / DX1000N / DX2000 [DXAdvanced] www.DAQStation.com	.DAD .DAE	Display Data Event Data
DX1000 / DX2000 [with /AS1 Pharma Option]	.DSD .DSE	Display Data Event Data
DX100 / DX200	.DDS .DEV	Display Data Event Data
FX1000	.DAD .DAE	Display Data Event Data
MV1000 / MV2000 [MVAdvanced]	.DAD .DAE	Display Data Event Data
FX100	.DDS .DEV	Display Data Event Data
DX100P / DX200P Pharma-Ausführung	.DBD .DBE	Display Data Event Data
MW100 / MX100	.MXD	Data
DL850	.WDF	Data files

2. Revision

Date	Version	Reason
06/2012	1	First creating
12/2012	2	Update entrys
05/2013	3	Update Function
07/2013	4	Update Function
01/2014	5	Update Function GX / GP Support FX1000 Support
08/2014	6	Update Function GX / GP Support Firmware R2. PIN Button Signature Information Drag & Drop Move Window



TIP:

For detail information about the changes, please read the change log.
You will find the change log within the setup routine.

3. System requirements

The program Windows based and requires therefore a Windows Operating System.

3.1 Prerequisite

To run the program correctly, please install the following Microsoft Update Packages:

- Windows .Net Framework 4 Full installation (is checked by setup)
 - <http://www.microsoft.com/en-us/download/details.aspx?id=17718>

3.2 Operating System

The program has been tested on the following platforms:

- Windows XP Professional SP2
- Windows 7 [32bit]
- Windows 7 [64bit]
- Windows 8 [64bit]

4. Installation preparation

For the installation of the program the file SetupAdvancedContent_Rx.exe, and a license number are required. Download the latest version from our site

<http://www.yokogawa.com>
<http://www.AdvancedTools.de>

It is also possible to use the Serial Number from the following Software solutions:

- AdvancedReportV2
- AdvancedSQLV2
- TUSReport2

The license number will be given at the delivery of the package. Keep this information carefully!
Also the Microsoft Framework has to be installed on the system.

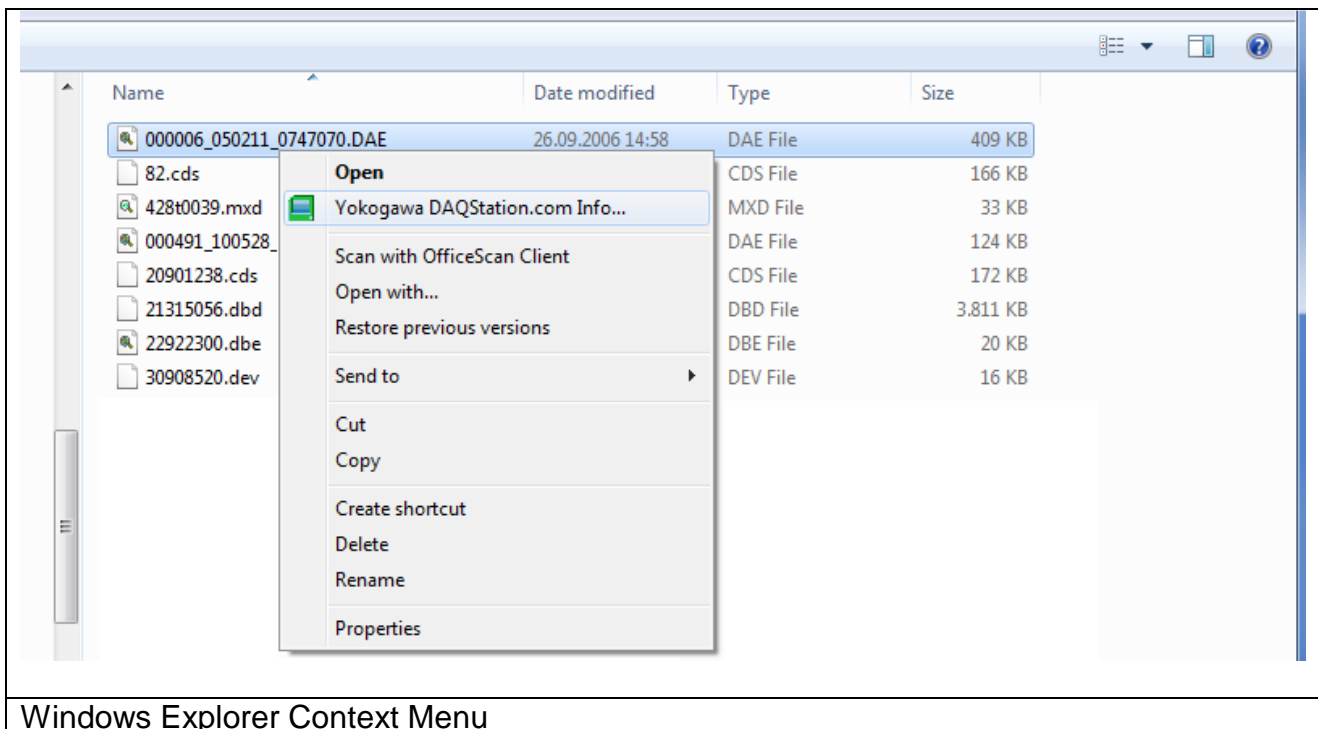
The recorded data files should be available at the computer where the Software program is installed.

4.1 Trial version

For trial use enter the license number leave the field empty.
For the Trail Version there will no values shown.

5. AdvancedContent: Context Menu Entry

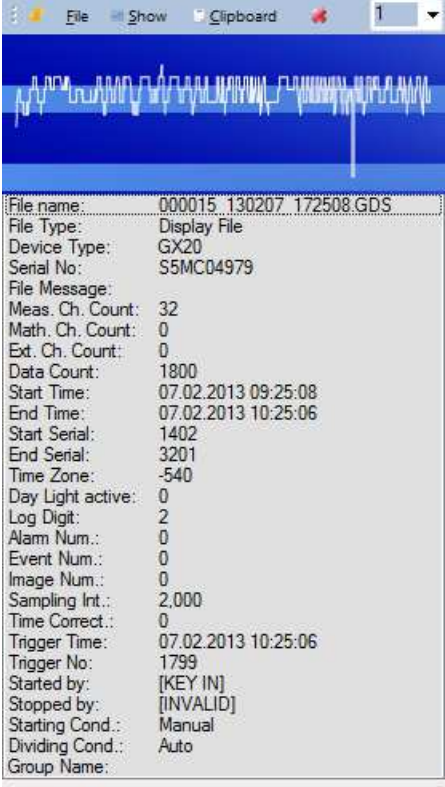
The program creates an entry into the Windows Explorer Context menu for the supported data file types.



Windows Explorer Context Menu

6. Program


After selecting the Context menu entry the following Form will be shown.



The screenshot shows a software window titled 'Program Window'. At the top, there is a menu bar with 'File', 'Show', and 'Clipboard' options, and a pull-down box containing the number '1'. Below the menu bar is a blue waveform chart. Underneath the chart is a text area containing the following data:

File name:	000015_130207_172508.GDS
File Type:	Display File
Device Type:	GX20
Serial No:	S5MC04979
File Message:	
Meas. Ch. Count:	32
Math. Ch. Count:	0
Ext. Ch. Count:	0
Data Count:	1800
Start Time:	07.02.2013 09:25:08
End Time:	07.02.2013 10:25:06
Start Serial:	1402
End Serial:	3201
Time Zone:	-540
Day Light active:	0
Log Digit:	2
Alarm Num.:	0
Event Num.:	0
Image Num.:	0
Sampling Int.:	2,000
Time Correct.:	0
Trigger Time:	07.02.2013 10:25:06
Trigger No:	1799
Started by:	[KEY IN]
Stopped by:	[INVALID]
Starting Cond.:	Manual
Dividing Cond.:	Auto
Group Name:	

Program Window



Show the Chart of Channel 1
Select the different channels by using the pull down box at the right.



TIP:

- To move the application, click into the chart and move the window on your screen.
- Click the PIN to hold the application in top of all.

File name:	000015_130207_172508.GDS
File Type:	Display File
Device Type:	GX20
Serial No:	S5MC04979
File Message:	
Meas. Ch. Count:	32
Math. Ch. Count:	0
Ext. Ch. Count:	0
Data Count:	1800
Start Time:	07.02.2013 09:25:08
End Time:	07.02.2013 10:25:06
Start Serial:	1402
End Serial:	3201
Time Zone:	-540
Day Light active:	0
Log Digit:	2
Alarm Num.:	0
Event Num.:	0
Image Num.:	0
Sampling Int.:	2,000
Time Correct.:	0
Trigger Time:	07.02.2013 10:25:06
Trigger No:	1799
Started by:	[KEY IN]
Stopped by:	[INVALID]
Starting Cond.:	Manual
Dividing Cond.:	Auto
Group Name:	

Data file Details

- Start / End Time
- Alarm available
- Events available
- Batch data / information
- Signature Details



TIP:

Drag & Drop the new file into the list box to view the next detail information. Use the PIN button to hold the form on top of all.

After starting the Software, the Icon is showing in the System tray.



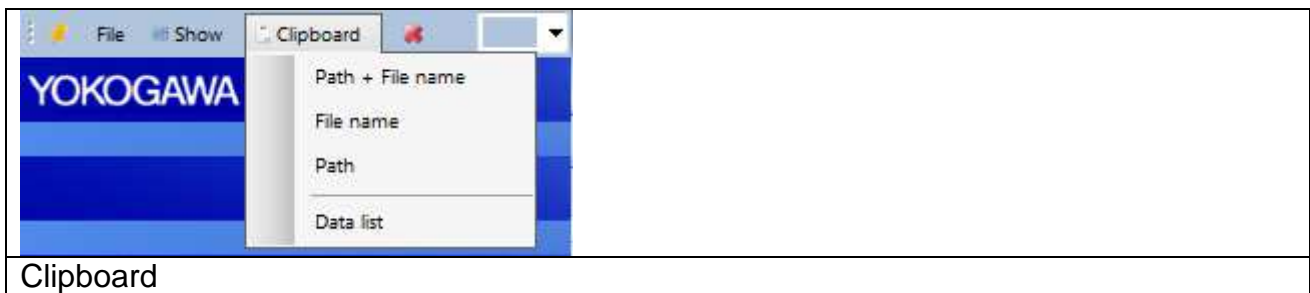
Icon System tray

6.1 Functions

At the windows form it is possible to check the following settings:



- | | |
|----------------|---|
| Pin Icon: | Hold the Application in Top of all other Application |
| File: | Shows the sub menu. |
| Show: | Open the file with the default program (eg. DAQStandard) |
| Clipboard: | Add Values into the Clipboard → Shows the sub menu. |
| Close Icon: | Close the Form into the System Tray |
| Pull down Box: | Shows and selects the Channel Number that shown in the chart preview. |

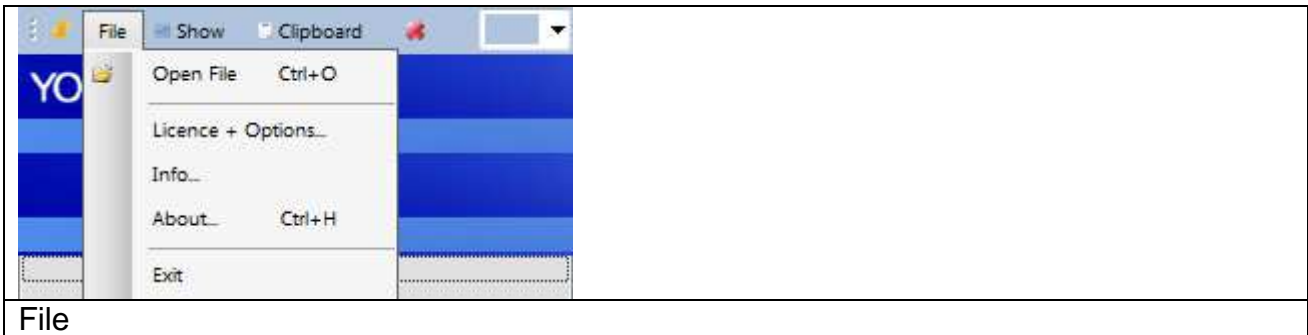


- | | |
|------------|---|
| Clipboard: | Copy the File Name, Path and information's into the clipboard |
|------------|---|



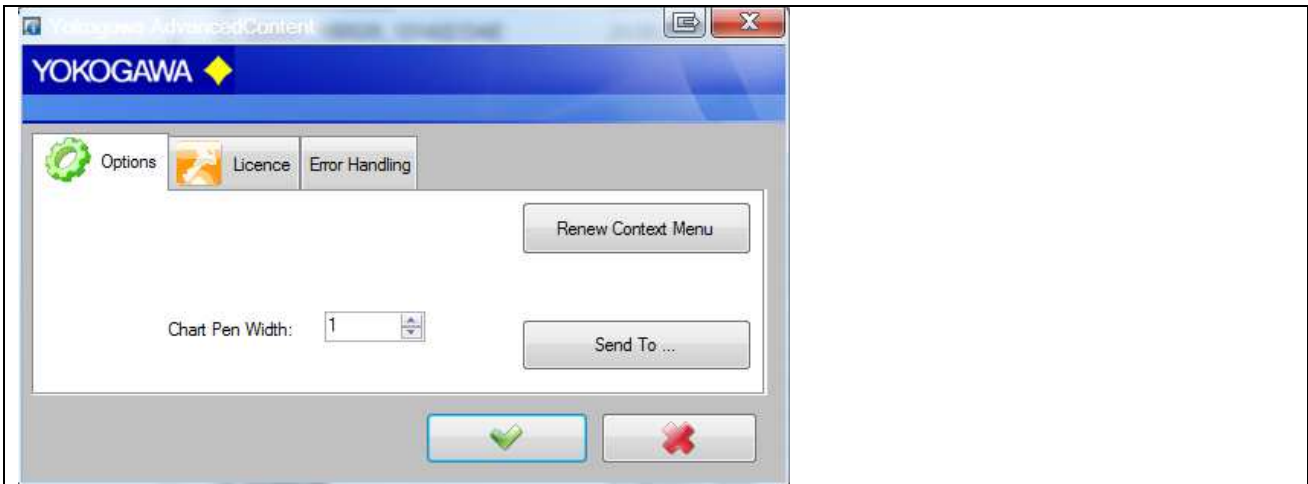
TIP:

Use the latest version of our Universal Viewer Software.
This Software is downwardly compatible to most of our recorder.
Download from <http://www.SmartDac.com> → Support → Software



- Open File: Open a new file by “File open” Dialog
- Licence: Shows a new window form for
- adding the license number,
 - renew the Windows Explorer Entry
 - Add into the “Send To” Folder
 - Error Handling routine
- Info: Shows the “What’s new” Dialog
- About: Shows the application detail information Dialog.
- Exit: Close the program completely

6.2 Options, License

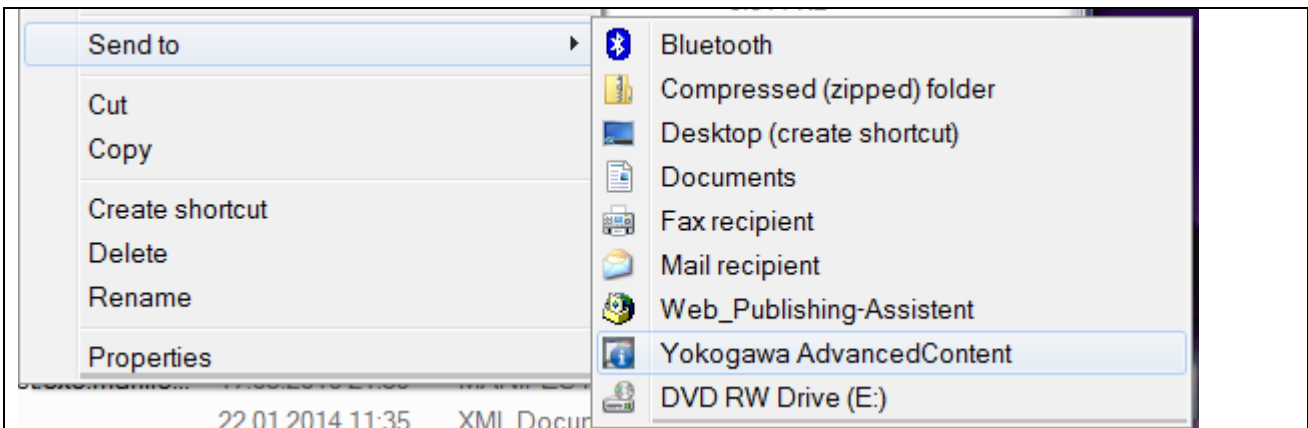


Renew the windows Explorer integration

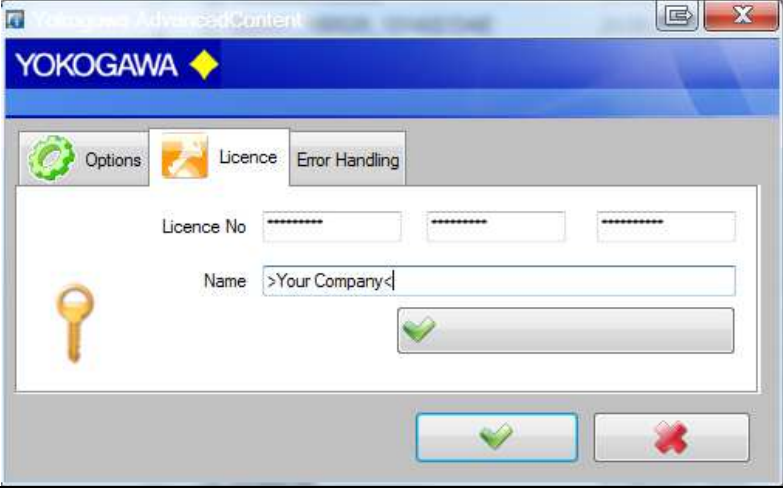


Note:


Administrative Rights are necessary to renew the settings.



Send To Folder





Yokogawa AdvancedContent



YOKOGAWA 

Options Licence Error Handling

Licence No [masked] [masked] [masked]

Name >Your Company<

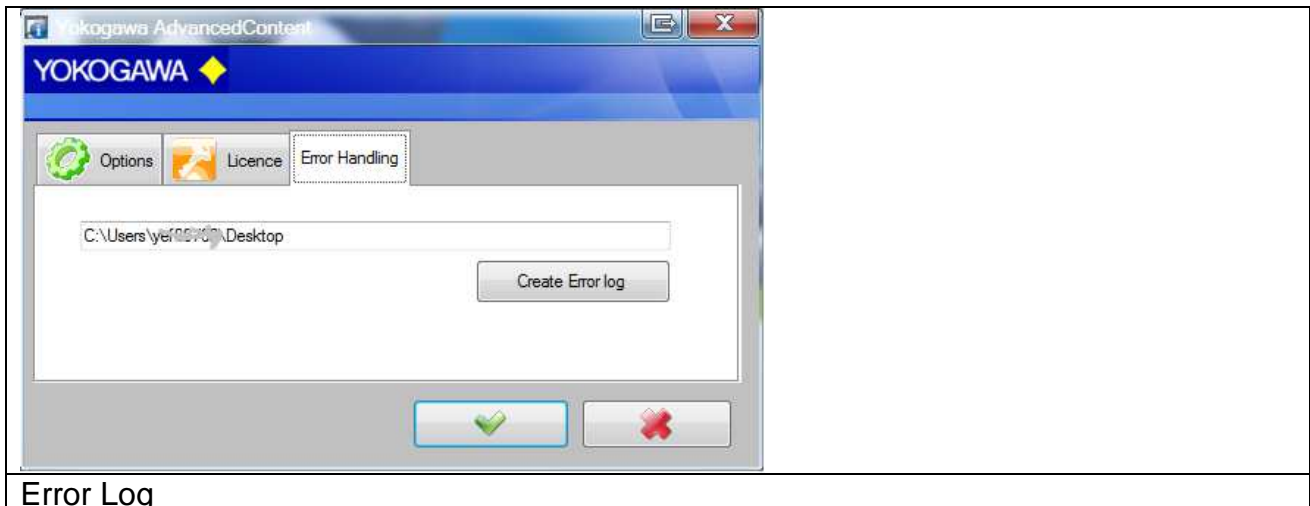
License Management

7. Error handling

During the conversion or in the generally running program if an error is recognized, this is indicated by a reference display window, registered in an Error file and in the Windows Event Log.

By pressing the >Create Error Log< Button, the Error Files are stored on your desktop in a separate folder.

Please send the file with exact error report and if necessary the file which can be converted to the well-known email address.



The messages are also send to the Windows event logger (Control Panel → Administrative Tools → Events).

7.1 Known mistakes with Windows 7

If the user changed the Default program to showing the chart, it is possible that also the Explorer Context menu is changed. (eg. from DAQStandard to Universal Viewer)

Within there is a new Registry entry under

```
HKEY_CURRENT_USER\Software\Microsoft\Windows\CurrentVersion\Explorer\FileExts\.\???\UserChoice
```

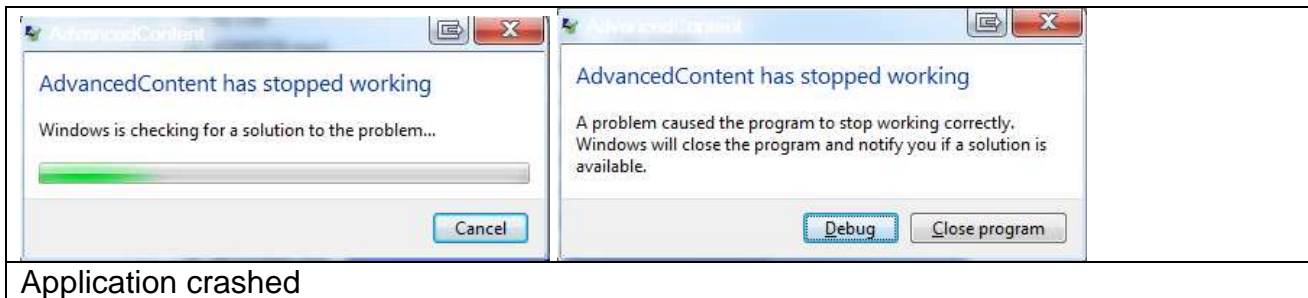
.\??? = Yokogawa File extension shown in chapter above.

To resolve the problem, delete the only the folder >UserChoise< at the current user and restart the PC. Please ask your System Administrator or use the "Send To" folder!

7.2 Application crashed

If the Application crashed with the following Error Message, please install the Microsoft .Net 4 Hotfix KB2640103.

You can find more information's on this page: <http://support.microsoft.com/kb/2640103/>



Faulting application name: AdvancedContent.exe, version: 1.13.25.0, time stamp: 0x53ebbed3
Faulting module name: clr.dll, version: 4.0.30319.2034, time stamp: 0x52ccfa2b
Error Message:

The Hotfix can be installed by the Setup routine.

8. More Solutions

Also available are the following software products:

AdvancedSQL

- The program AdvancedSQL inserts automatically data from the Yokogawa paperless recorders into a database. For example MSSQL Server 2000; MSSQL Server 2005 and MS-Access.

TUSReport, Add in for Microsoft Excel

- The Addin serves automatic converting of the data files and the event files of the Yokogawa recorder from the DX, DXP, FX and DXAdvanced family into the NADCAP Report format.