



AdvancedUserConnect

YOKOGAWA Deutschland GmbH
Broichhofstraße 7-11
Germany 40880 Ratingen
Tel. +49 - 2102 - 4983 - 0

INDEX:

1.	Introduction.....	3
2.	Revision	3
3.	Function of the Software.....	4
4.	System Requirements.....	5
4.1	Hardware	5
4.2	Software.....	6
4.3	Prerequisite	6
4.4	Operating System	6
5.	AdvancedUserConnect: Start the program.....	7
6.	Configuration of the Recorder	8
6.1	Main Settings of the Recorder Connection	8
6.1.1	Add/Delete Button	8
6.1.2	Button Save/Undo	8
6.1.3	Recorder Active Checkbox	9
6.1.4	Master Recorder.....	9
6.1.5	Login Settings	9
6.2	Control settings	10
6.2.1	Control	10
6.3	User Settings.....	11
6.3.1	Send 2 Recorder / Change Password	11
6.4	Active Directory	12
6.5	User Groups.....	13
6.6	More Settings	13
7.	Attitudes Manual Synchronization.....	15
8.	Attitudes automatic Synchronization	16
9.	Program Configuration / Options.....	17
9.1	Settings Page 1	17
9.1.1	License	17
9.1.2	Language change-over	18
9.1.3	New language file provide	18
9.1.4	Program protection.....	18
9.1.5	Service settings	18
9.1.6	Logging /Backup and Restor Settings.....	20
9.2	Settings Page 2	20
10.	Audit Trail.....	23
10.1	Help.....	24
11.	Run Program as NT- Service	25
11.1	Installation	25
11.1	Deinstallation.....	26
12.	Error handling	27
12.1	Solve Problem by yourself.....	27
12.2	Software AdvancedUserConnect.....	27

1. Introduction

The program AdvancedUserConnect performs automatic User Management Synchronization for the Yokogawa SmartDac Recorder family

For an effective User Management it is possible to activate the times of the function at different intervals.

For updates and changes about the program, please read the info file stored in the installation folder or contact your Yokogawa sales team.



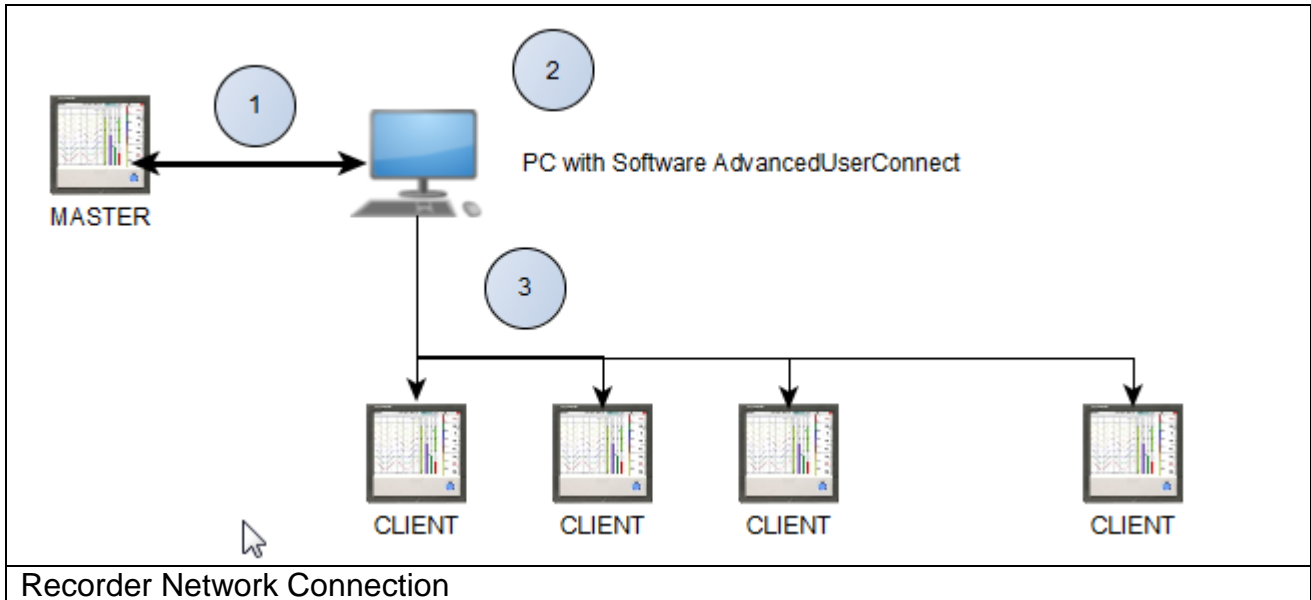
Note:

Please read this manual to find solutions!

2. Revision

Date	Version	Reason
06.2013	1	First creation

3. Function of the Software



- (1) Connection between the “Master” Recorder and the PC Software
 - Receive user settings from MASTER Recorder
 - Send back the information to the MASTER Recorder
 - User can change password on the MASTER Recorder

- (2) Software AdvancedUserConnect
 - Receive user settings from Recorder
 - Editing user settings on the Recorder

- (3) Connection to the “CLIENT” Recorder
 - Receive user settings from MASTER Recorder
 - Receive user settings from CLIENT Recorder
 - Synchronize the User Settings between the MASTER and CLIENT Recorder

4. System Requirements

4.1 Hardware

The paperless Recorders listed below are supported by the Software:

Recorder
<ul style="list-style-type: none">• GX10 / GX20• GP10 / GP20• GM10 <p>www.smartdacplus.com</p>

For the analysis using a PC, the following minimum hardware requirements must be met.

- Hard disk capacity: 30 MB
- Memory: 1GB

4.2 Software

The program AdvancedUserConnect is Windows based and requires therefore a Windows Operating System.

4.3 Prerequisite

- Windows .Net Framework 4 Full installation (is checked by setup)
 - <http://www.microsoft.com/en-us/download/details.aspx?id=17718>

4.4 Operating System

The program has been tested on the following platforms¹:

- Windows 7 [32bit]
- Windows 7 [64bit]
- Windows 8 [64bit]
- Windows Server 2008
- Windows Server 2012
- Windows Server 2012R2



Note:

Operation under Windows 8 has not been fully tested at the time of writing this manual.

¹ Microsoft Windows is a registered trademarks or trademarks of Microsoft Corporation in the United States and/or other countries

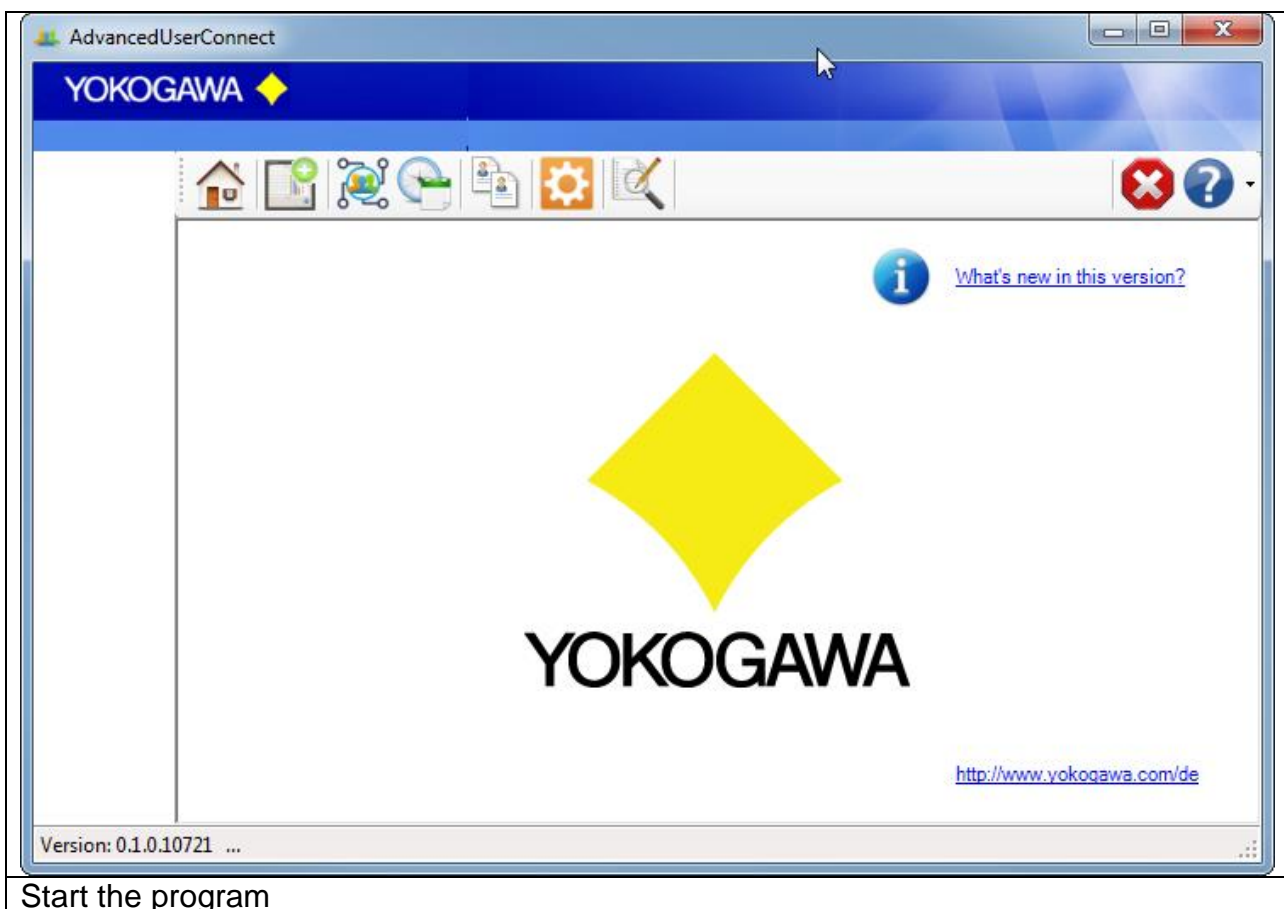
5. AdvancedUserConnect: Start the program

The program starts in the illustration that follows.

The window consists of two parts. The left part consists of the navigation bar with the menu options:

- Home/Main
- Configuration of the connected Recorder
- Manual synchronization
- Automatic synchronization
- Audit Trail
- Program settings
- Event Report and Error Handling
- Close Program
- Information

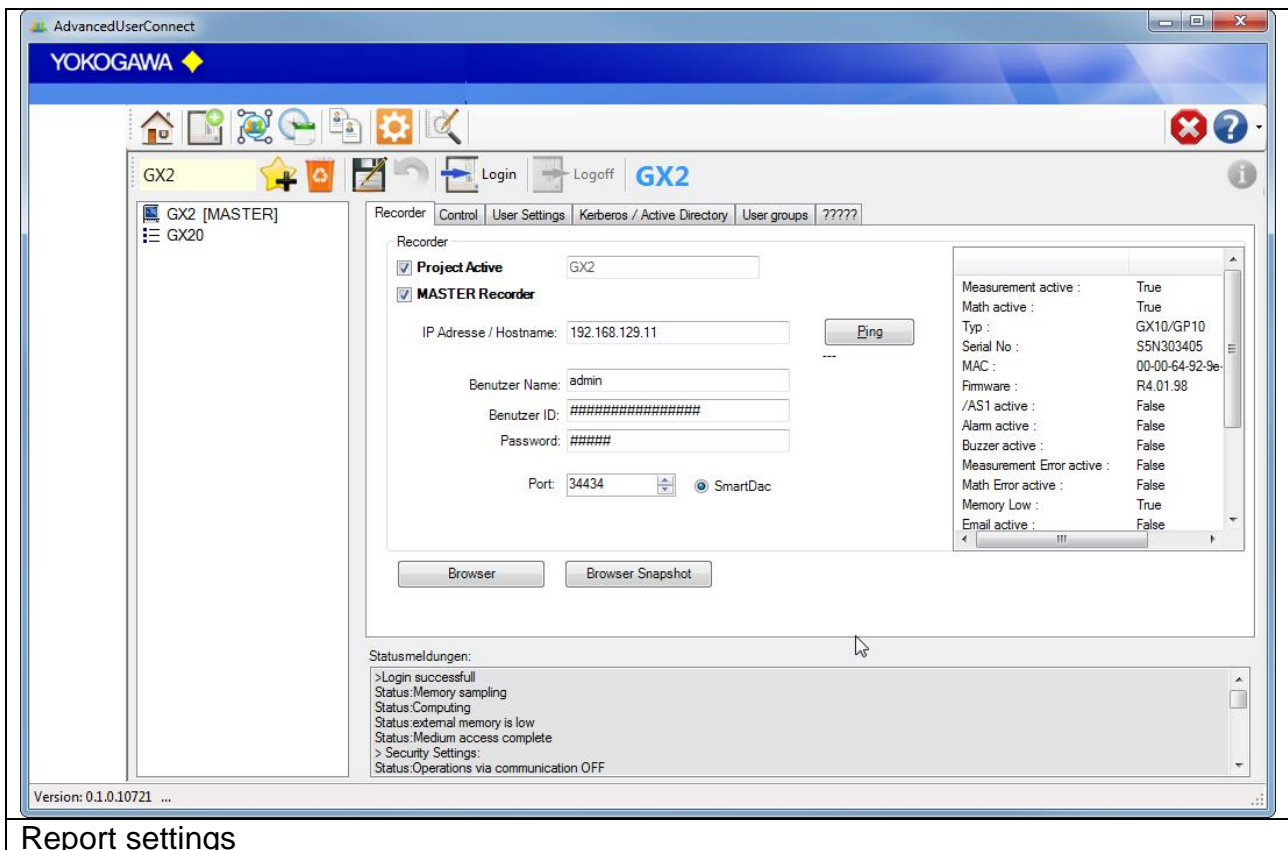
The appropriate dialogues are indicated in the right part. The explanations to the individual adjustment possibilities are specified on the following pages.



6. Configuration of the Recorder

6.1 Main Settings of the Recorder Connection

On the register sheet “Recorder” the following settings are made:



Report settings

6.1.1 Add/Delete Button



With this Button it can be add or delete a Recorder.

Add a Name into the Textbox and Press “ADD”.

To delete a Recorder, select the Recorder and Press “DELETE” Button.

6.1.2 Button Save/Undo




After all changes at the configuration the attitudes over the Button “SAVE” in the Config file must be deposited.

With the Button “UNDO” can be indicated the last stored attitudes again.

6.1.3 Recorder Active Checkbox

To activate or deactivate a Recorder, check or uncheck this checkbox.

<input checked="" type="checkbox"/>	Project Active	Active Project
<input type="checkbox"/>	Project Active	Deactivate Project
	SX2	Selected Recorder

If a Recorder deactivate, the auto scan routine will be ignore this Device. Only a manual conversion is possible.

6.1.4 Master Recorder

Within the automatic mode, this Recorder will be defining the User credentials for the other entire Recorder.



NOTE:

Only one Recorder can be defining as a MASTER.

6.1.5 Login Settings

Add the Recorder connection settings like IP Address, Port Number and User Login data.

The Default Port Number for a SmartDac Recorder is 34434.

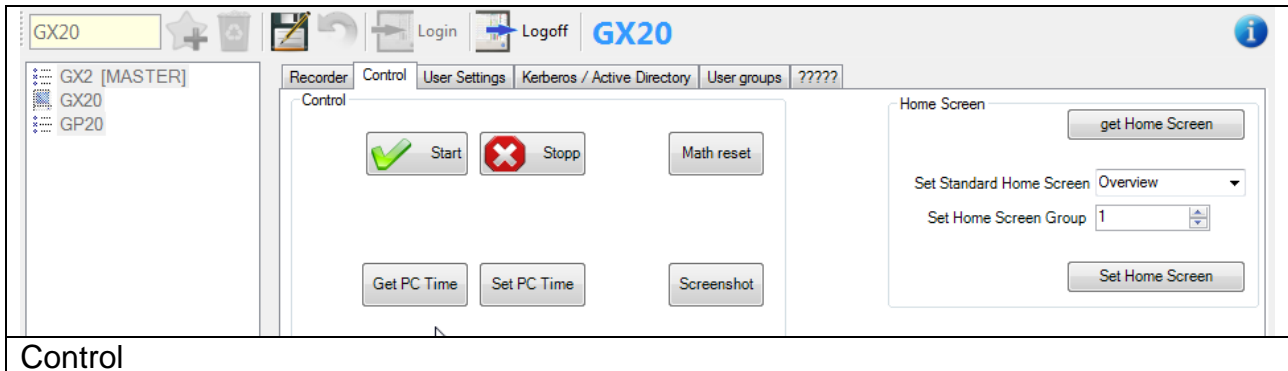
To connect to the Recorder, it is necessary to implement a User as “Admin”. This has to be done directly on the Recorder within the preparation of the Recorder.

To Test the IP Connection, please use the PING Button.

To rename the Recorder Project, Change the Name in the Textbox and press the “Rename Recorder” Button.

6.2 Control settings

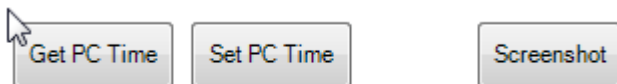
On register sheet “Control” the following attitudes are made:



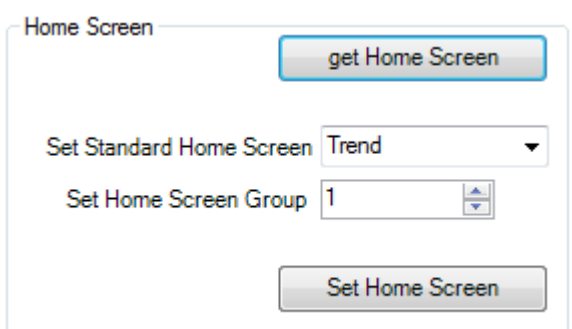
6.2.1 Control



- Start and Stop the Recorder (Math and Measurement)
- Reset the Math calculation



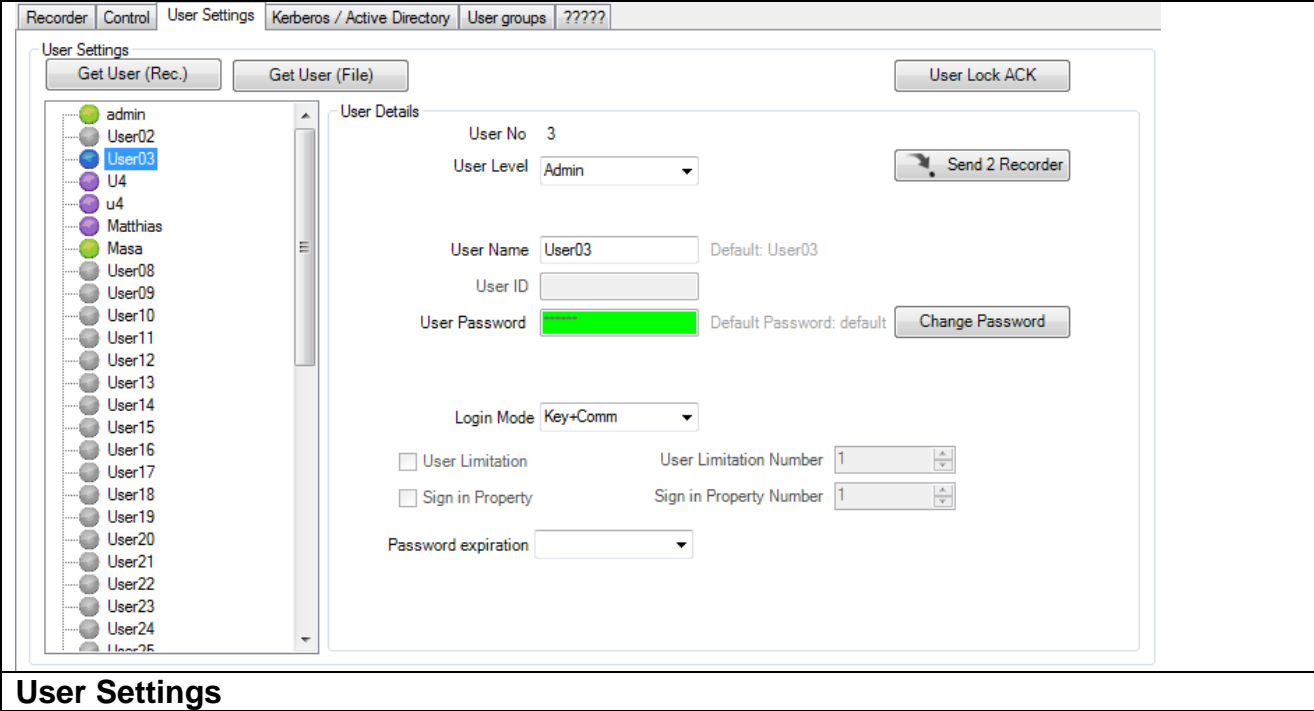
- Get the Recorder Time
- Set The PC time to the Recorder
- Take a screenshot of the Recorder Display



- Get and Set the Home Screen of the Recorder

6.3 User Settings

On the register sheet “User Settings” it is possible to Add, Change and Delete the User of the Recorder.

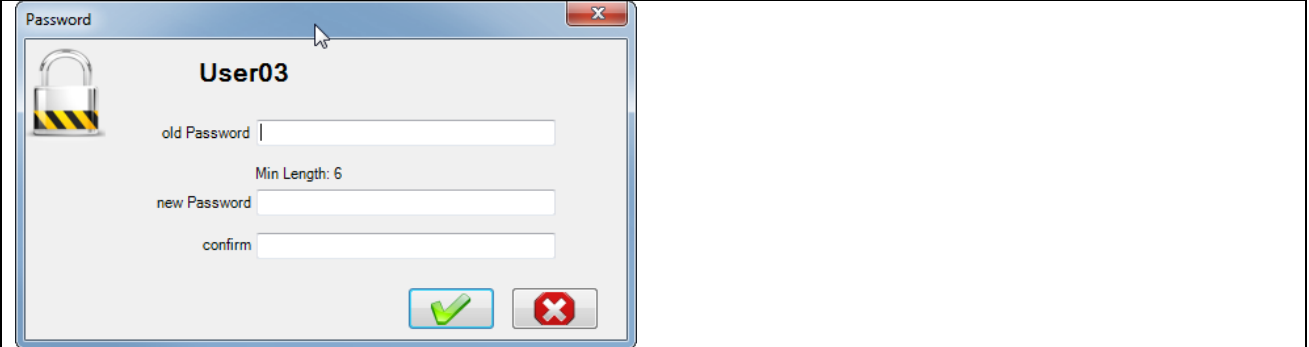


To Read the User of the Recorder, Press the “GET User (Rec.)” Button.

After selection of an User, you will get all the Detail Settings of them. It is also Possible to change the settings within this screen.

6.3.1 Send 2 Recorder / Change Password

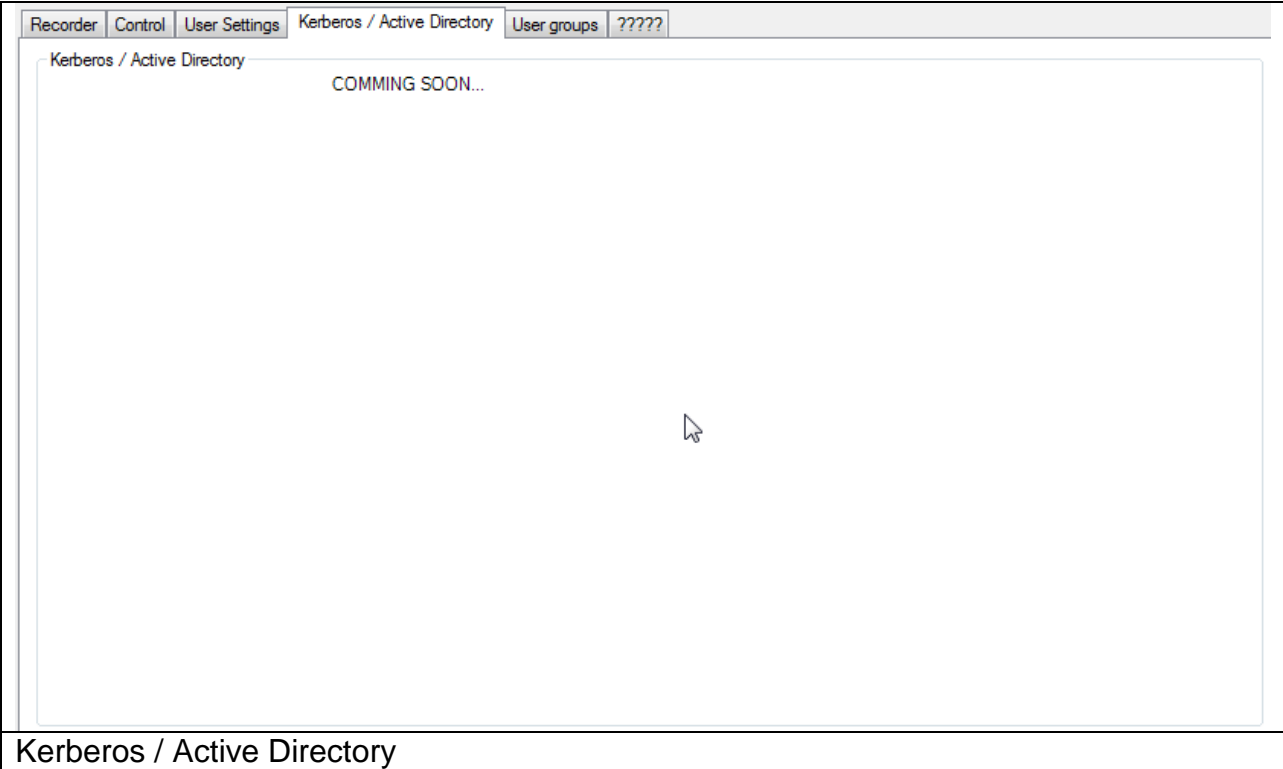
With this button, it is possible to send the changes to the Recorder.



Change the Password. If the old Password is empty, the new password will be send. If the cancel button is press, the default Password will be send.

6.4 Active Directory

On the register sheet “Kerberos / Active Directory” will be set these settings:



6.5 User Groups

On register sheet “User Groups” the following attitudes are made:



With activating this option, the User Group settings will be Copy from the “MASTER” Recorder to this Recorder.

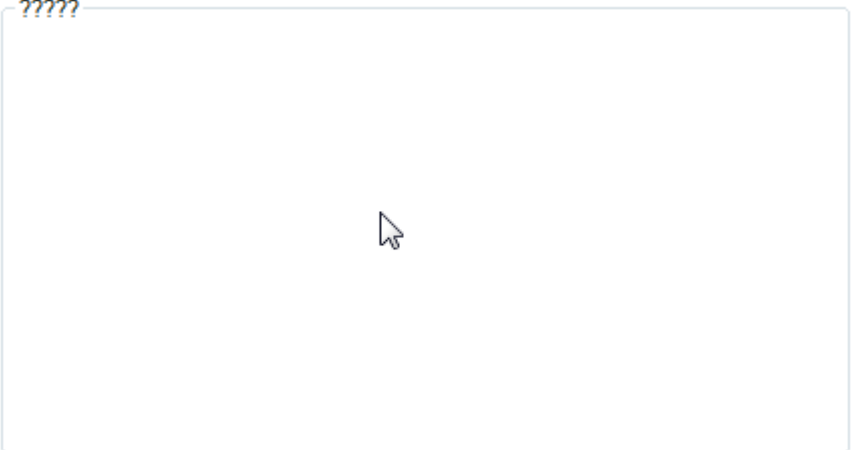
It will be also possible to get and set the separate User Group Limitations on the Recorder.

6.6 More Settings

On register sheet “More settings” the following attitudes are made:

Recorder	Control	User Settings	Kerberos / Active Directory	User groups	?????	
----------	---------	---------------	-----------------------------	-------------	-------	--

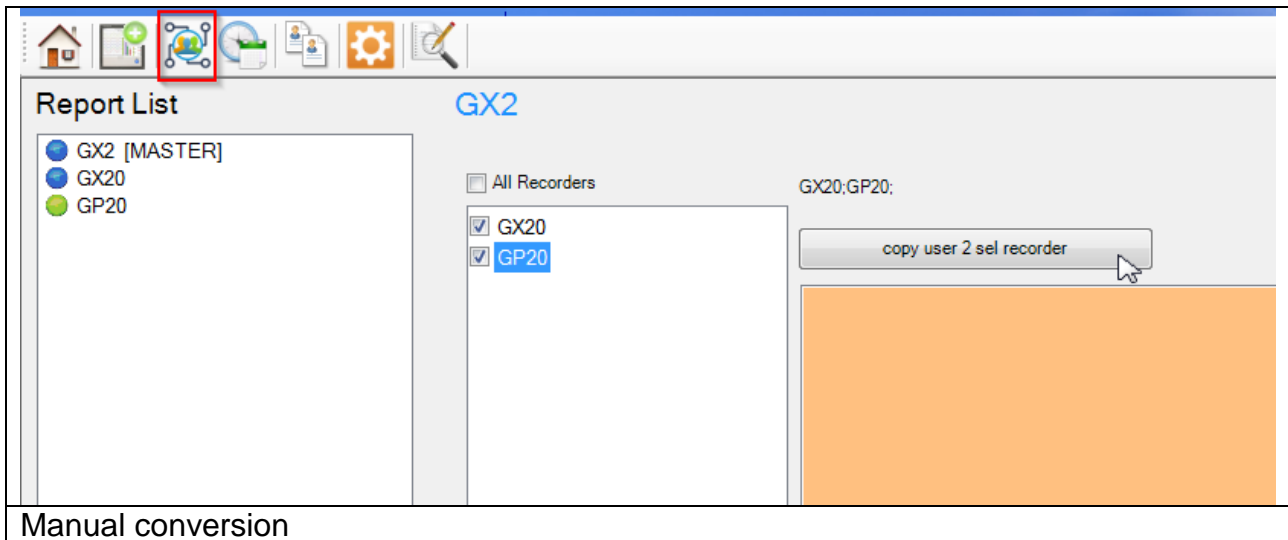
?????



More settings

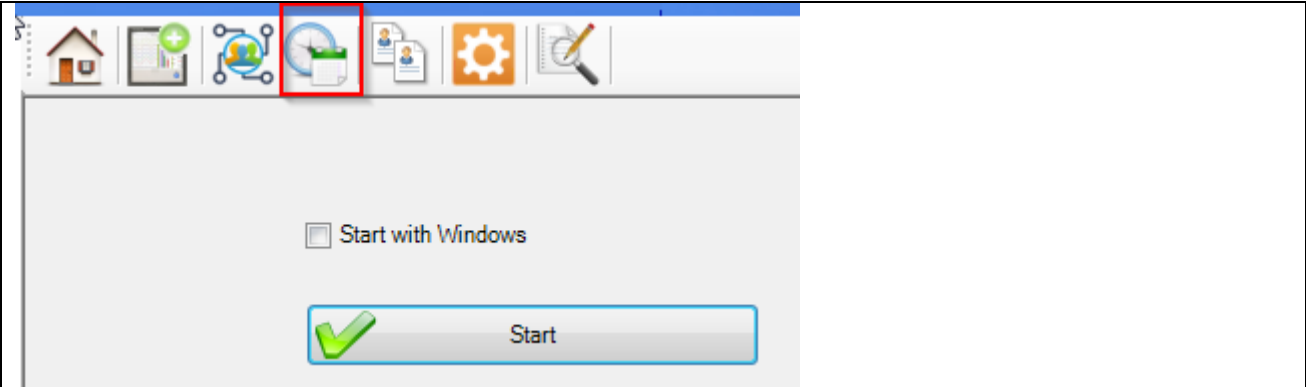
7. Attitudes Manual Synchronization

Over register sheet “Manual Synchronization” individual Recorder with the selected Recorder can be synchronized.



Start the Synchronization with pressing the “Copy User 2 selected Recorder”

8. Attitudes automatic Synchronization



Attitudes automatic Synchronization

Automatic Synchronization by an Icon in the system tray (beside the clock right down) is indicated.

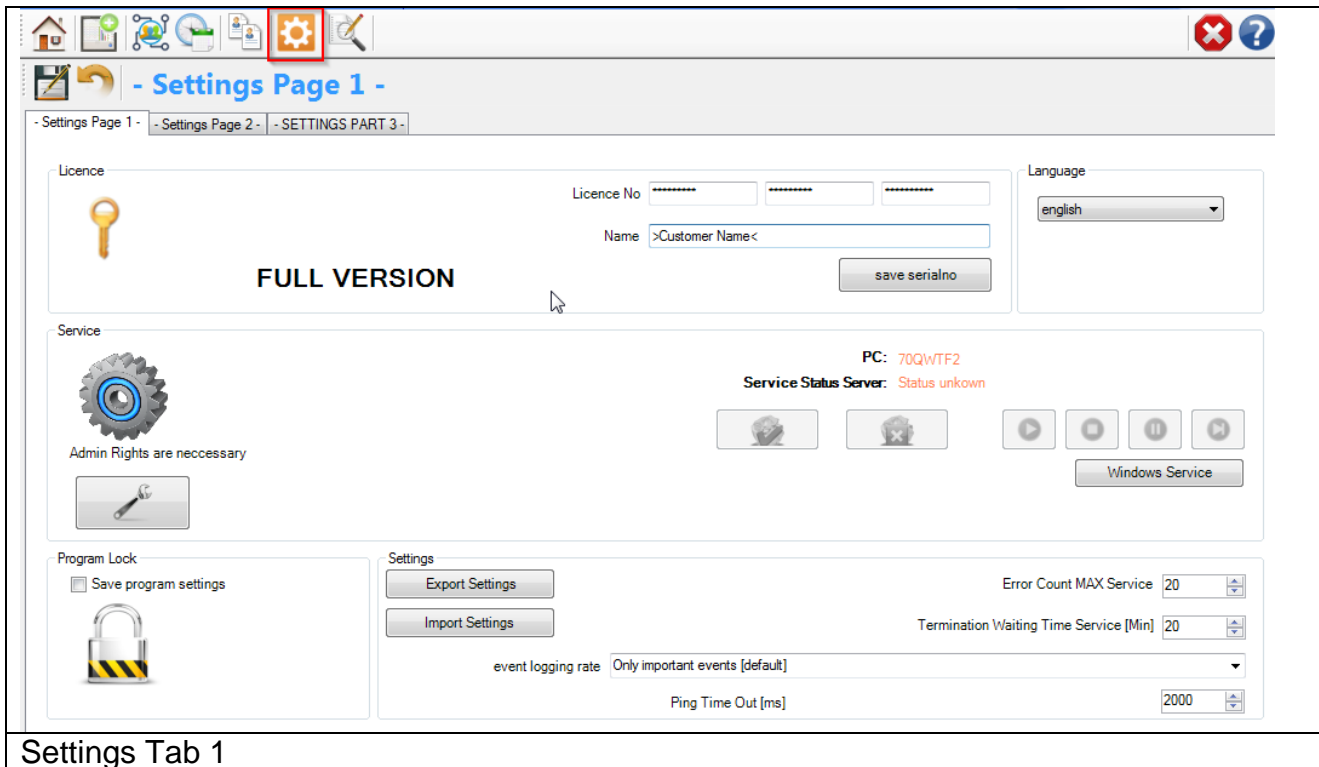


Icon System tray

9. Program Configuration / Options

All major Settings of the Program will be done on this pages.

9.1 Settings Page 1



From the information dialogue the version number and the address become evident when questions and suggestions.

9.1.1 License

Serial number

If the software in the demo version is installed, put the license number into these fields. With the Button save serial number the software is free licensed.

Name

Under name (company) the name of the enterprise is registered, if specific changes (e.g. a changed export format) at the software were made. A serial number with the registered company name can be acquired at the company Yokogawa.

9.1.2 Language change-over

By the Button “language” the language change-over. After selecting a language, these select are directly switched. Please start the program again, in order to receive a complete language change-over.

9.1.3 New language file provide

It is possible to translate the program AdvancedUserConnect into different languages. For the production of a further language, you proceed as follows:

1. Copy the file english.lng from the installation folder into a temporary folder.
2. Designate the file into the new language over, e.g. france.lng.
3. Open the file and a changing you the texts behind the =-Sign.
4. Store the file and copy them into the installation listing.
5. The new language can be selected after a restart by AdvancedUserConnect.

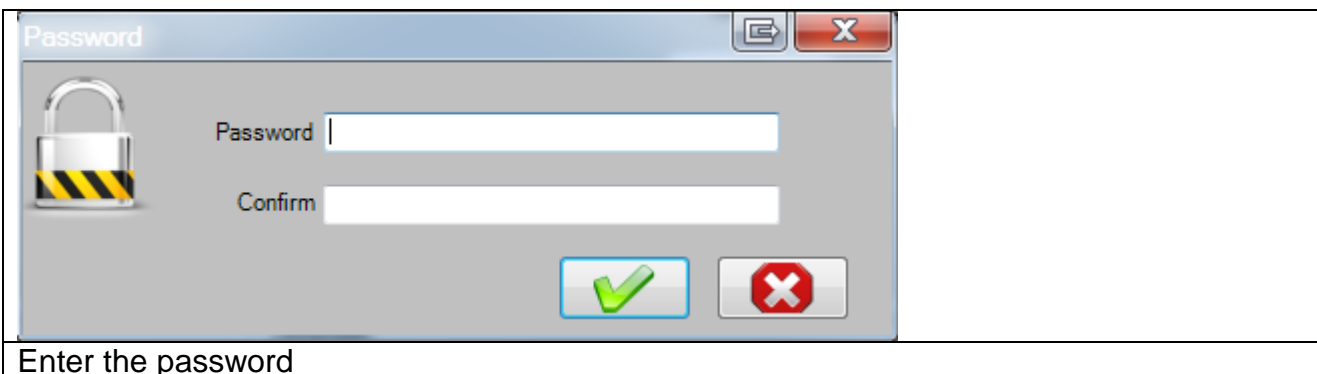
9.1.4 Program protection

Check this option to disable the following function.

1. Save program settings
2. End the program.

By checking the checkbox “protect program control” and entering a password the save will be protected by the password.

Also it is not possible to close the program without entering the password.



Enter the password

For saving the protection press the save button and re-enter the password.

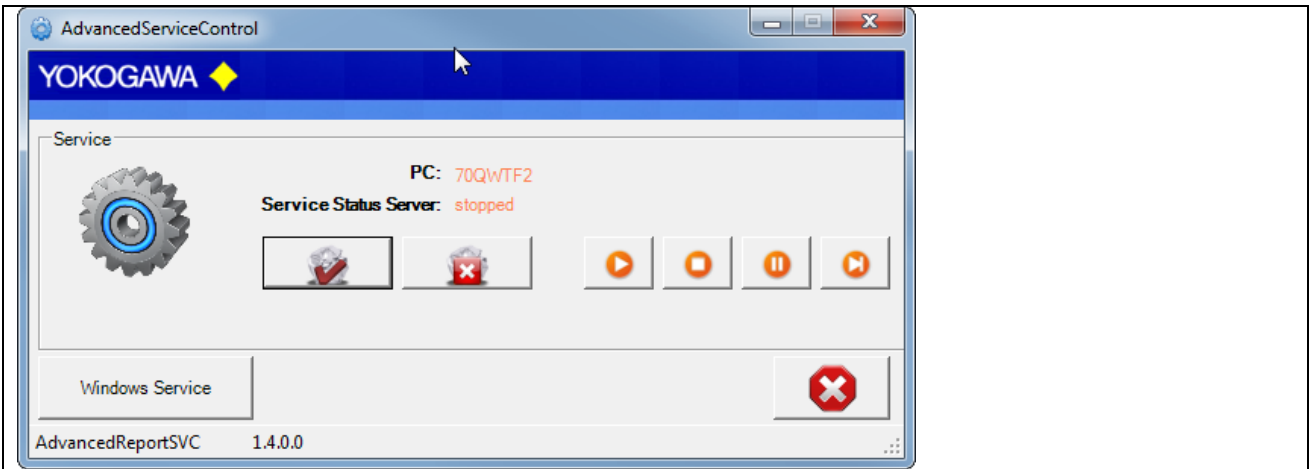
The protection mode will be displayed at the status bar on the bottom of the program.

9.1.5 Service settings

You will find more info's for Service settings in one of the next pages.



Service Settings



Service Settings as separate Application

9.1.6 Logging /Backup and Restor Settings

Every important message is stored in the windows event log. With the pull down menu it is possible to select the logging rate.

With default setting you will find only the important events in the Logfile. For more detail information within the error handling select the higher event log rate.

Error Count Max:

After 20 internal Errors, the windows service will be restart automatically. For this function it is necessary to start the service as a user with administrative rights.

Termination Waiting Time [Minutes]:

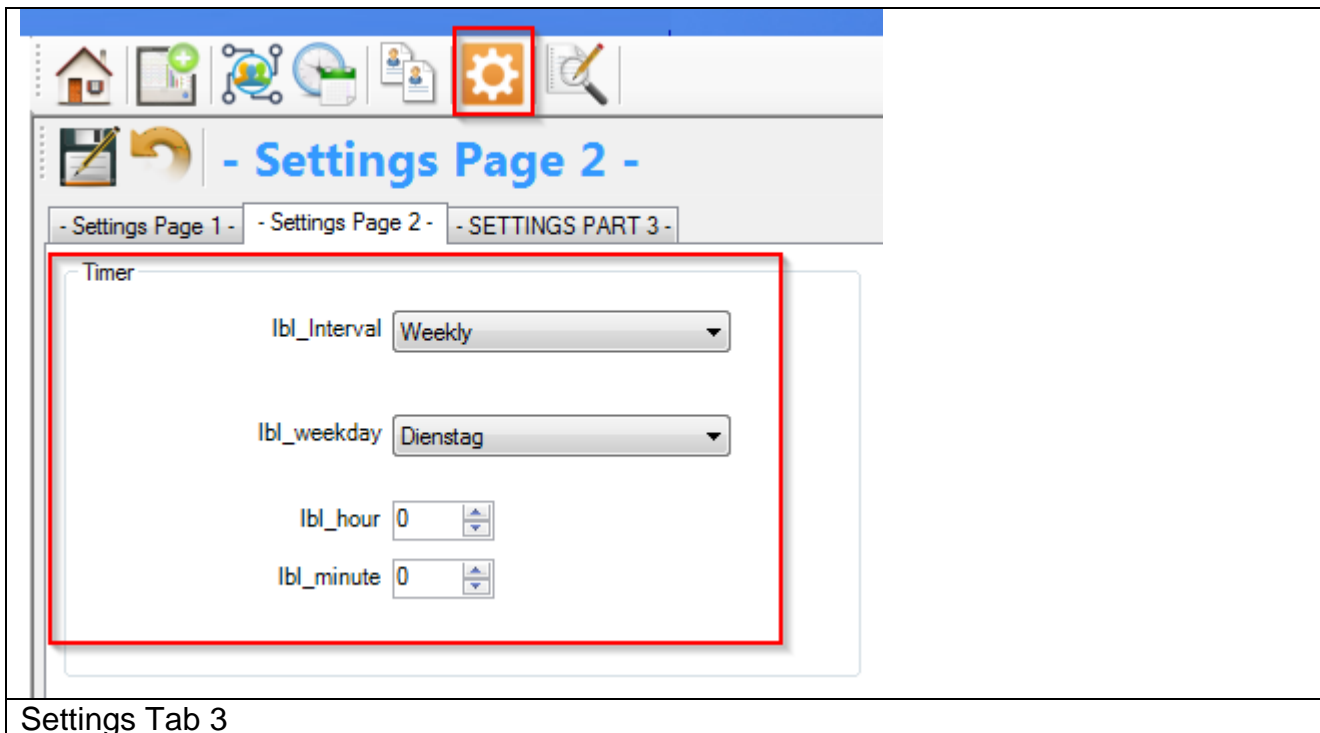
If the Software running as a service and a conversion of the report becomes an error, the conversion will be terminate after 10 minutes and also the Excel instance will be terminate.

Export/Import Settings

With this buttons it is possible to Backup and Restore the settings file

Settings	
<input type="button" value="Export Settings"/>	Error Count MAX Service 20
<input type="button" value="Import Settings"/>	Termination Waiting Time Service [Min] 30
event logging rate	Only important events [default]
Service Setting	

9.2 Settings Page 2



On the register sheet the attitudes for the temporal interval of the conversion program will convert automatic transacted. At the selected time all active Recorder in the listing are Synchronized.

Note:

1. If a new Recorder should have been provided into the source listing in the time of the synchronization, this is started automatically in the next interval.

With the hook in the field with Windows start AdvancedUserConnect with each Windows start set. If the hook is deleted, the automatic start is deactivated.

The following time intervals are supported:

1. Weekly
 Further attitudes necessarily:
 - Day
 - Hour
 - Minute
2. Daily
 Further attitudes necessarily:
 - Hour
 - Minute
3. Once per hour

Further attitudes necessarily:

- Minute

4. Interval

Further attitudes necessarily:

- Minute

With the Button starting is activated automatic converting.

If the program is running as a service, it is not possible to start the program again in automatic mode. So save the settings, push the save Button. After stopping and restarting the software, the settings are available.

10. Audit Trail

Every Change I the software will be documented into the Audit Trail.

If any file of the Software will be manipulated, it will be recognize and ignore all settings ore entries!



NOTE:

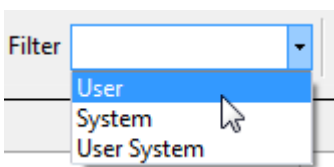
If any file of the Software will be manipulated, it will be recognize and ignore all settings ore entries!

	Date	Category	Prozedure	PC	Message
292	25.07.2017 09:08:07	0	Login	70QWTF2	Login to Project GX20
293	25.07.2017 09:12:17	0	Logout	70QWTF2	Logout from Project GX20
294	25.07.2017 09:26:22	1	Main	70QWTF2	Start Software Form
295	25.07.2017 09:26:34	0	Login	70QWTF2	Login to Project GX20
296	25.07.2017 09:30:38	0	Logout	70QWTF2	Logout from Project GX20
297	25.07.2017 09:30:41	0	Login	70QWTF2	Login to Project GX2
298	25.07.2017 09:36:37	1	Main	70QWTF2	Start Software Form
299	25.07.2017 09:36:41	0	Login	70QWTF2	Login to Project GX2

Audit Trail



- Read next month Audit trail Data
- Start and End Time of the shown Data
- Count of the shown entrys



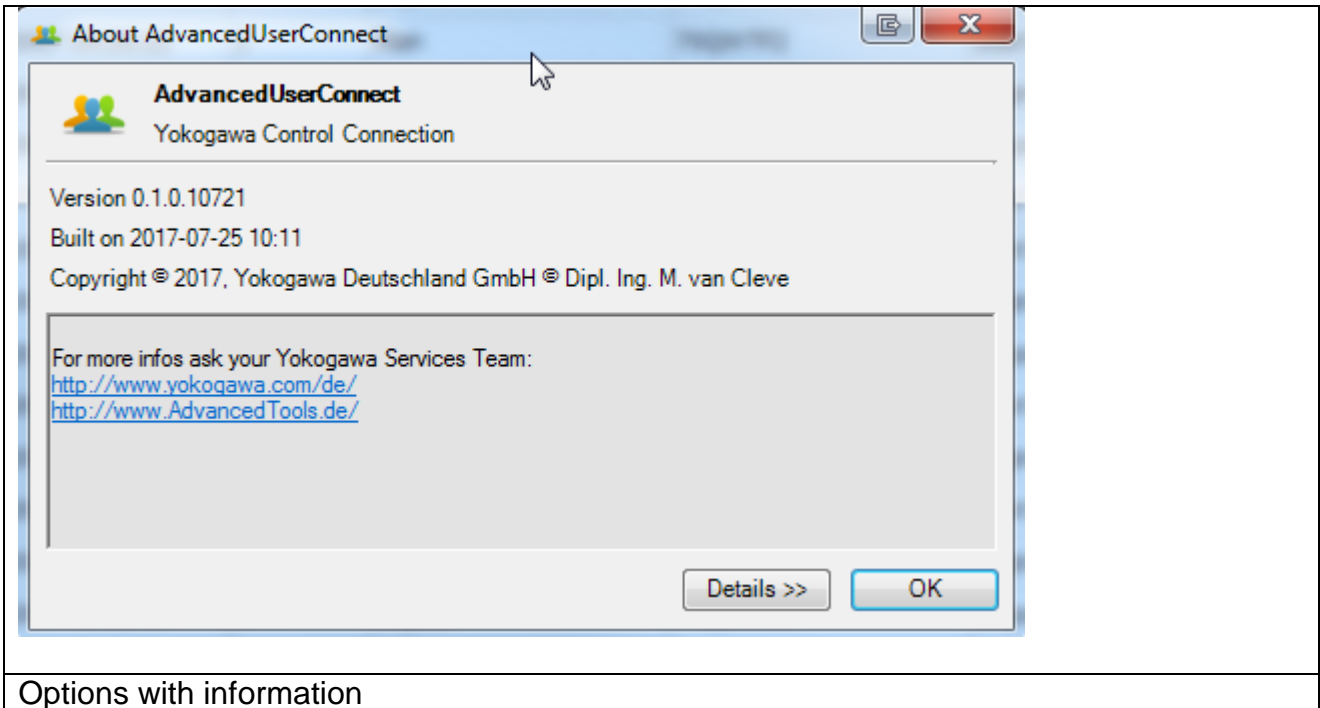
- Filter the Audit Trail Data



- Print the Tabel

10.1 Help

With operate 'options' a window with information is indicated.



11. Run Program as NT- Service

It is possible to start the program as a service. With this it is not necessary to login on the computer. It starts automatically with Windows.

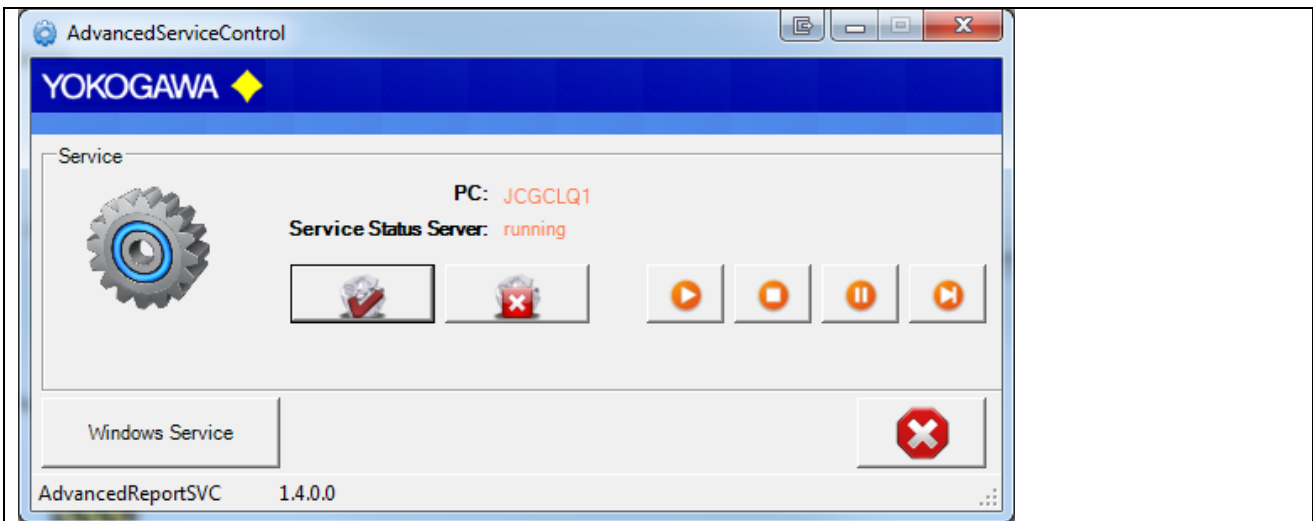


Note:

- Also the FTP Server has to run as a Service!
- All Settings have to be made as User with administrative Rights

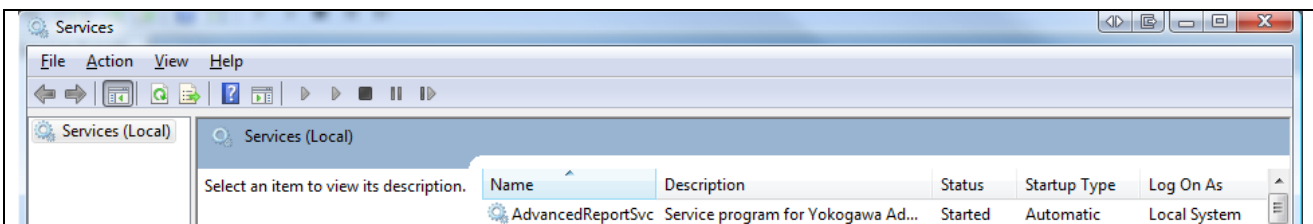
11.1 Installation

Change to the Settings register. The Button „Install“ add the service „AdvancedUserConnectSvc“ into the control panel. The Button „Start“ activate the Service. The service start as „System“ User in Automatic Mode. By changing the settings, it will be activate with a new folder scan.

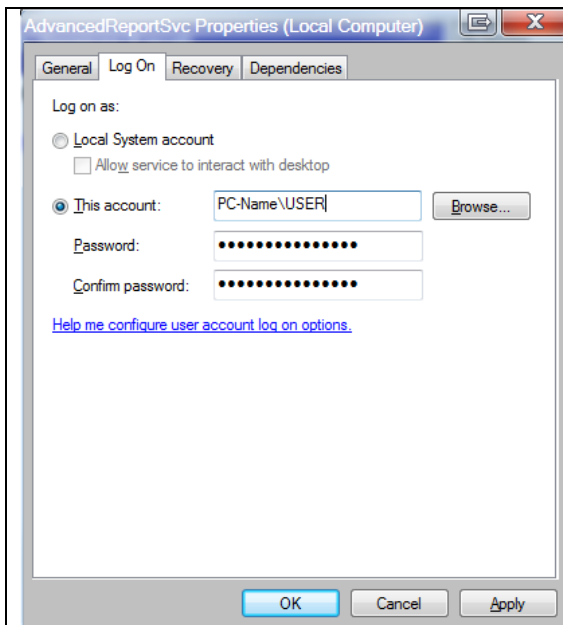


Install Service in AdvancedUserConnect

The messages are sending to the Windows event logger (Control Panel → Administrative Tools → Events).



Windows Services



Add User Name to the Service

To convert the Data files within the Excel Template you have to create a Folder under Windows 7 and Windows 8.

With this Version and newer the service will be restart after an Error Counter of 10. For this function it is important to start the service as an user with administrative rights.



ATTESION IMPOTANT:

It is important to start the service as an user with administrative rights.

11.1 Deinstallation

Change to the Settings register. The Button „Stop“ stopped the service. After stopping the service it is possible to uninstall the service by using the button „Un-Install“.

12. Error handling

12.1 Solve Problem by yourself

If an error is recognized in the conversion or in general running of the program, this is indicated by an “Alert window” and registered in the error log.



Note:

1. Please read this chapter to solve the problem.
2. Use the Error Handling routine before calling your Services Team.

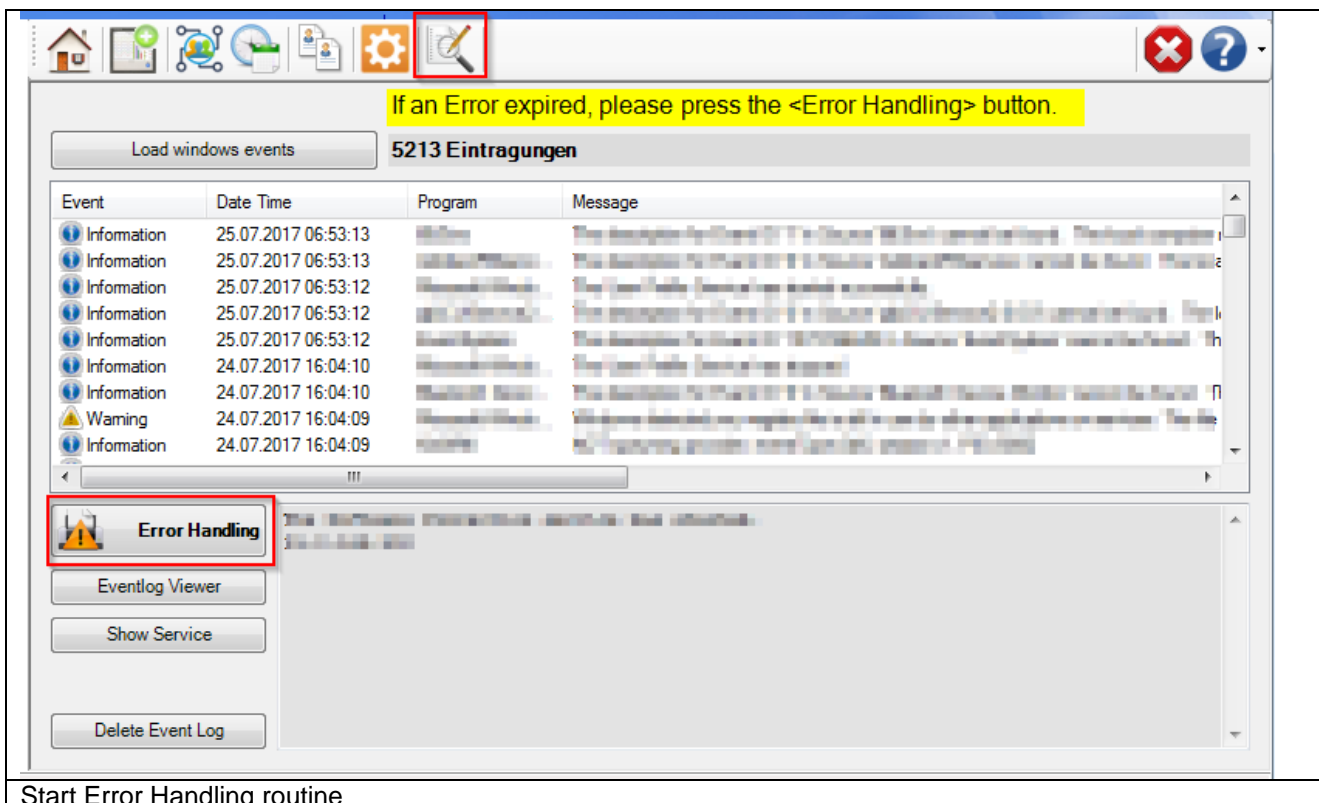
12.2 Software AdvancedUserConnect

During the conversion or in the generally running program if an error is recognized, this is indicated by a reference display window and registered in the file error.log.

Please send the file with exact error report and if necessary the file which can be converted to the well-known email address.

If the programs running as a Service, the messages are also send to the Windows event logger (Control Panel → Administrative Tools → Events)

- Start AdvancedUserConnect
- Select Button >Events< See next picture.



The screenshot shows the Windows Event Viewer interface. At the top, a yellow banner reads: "If an Error expired, please press the <Error Handling> button." Below this, there is a table of events with columns for Event, Date Time, Program, and Message. The table shows several information events and one warning event. At the bottom left, there is a section titled "Error Handling" with a warning icon, and below it are buttons for "Eventlog Viewer", "Show Service", and "Delete Event Log".

Start Error Handling routine

