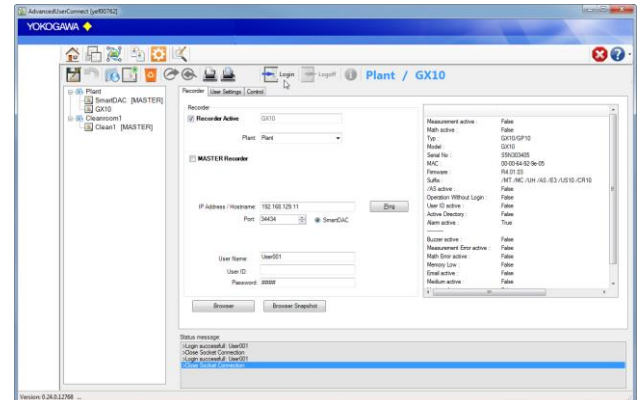


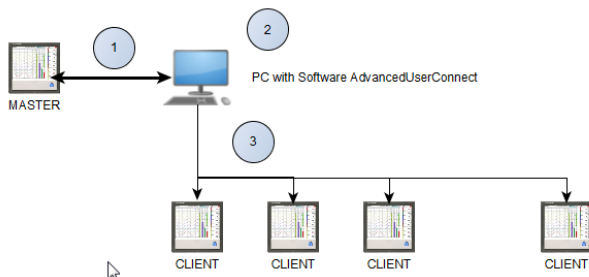
Overview

The program AdvancedUserConnect performs automatic User Management Synchronization for the Yokogawa SmartDAC Recorder family. For an effective User Management it is possible to activate the times of the function at different intervals.

Save the implemented User settings and Group settings for a disaster recovery procedure.



Specification



(1) Connection between the “Master” Recorder and the PC Software

- Receive User settings from MASTER Recorder
- Send back the information to the MASTER Recorder
- User can change password on the MASTER Recorder

(2) Software AdvancedUserConnect

- Receive User settings from Recorder
- Editing User settings on the Recorder
- Transfer User inclusive Settings to each other active Recorder

(3) Connection to the “CLIENT” Recorder

- Receive user settings from MASTER Recorder
- Receive user settings from CLIENT Recorder
- Synchronize the User Settings between the MASTER and CLIENT Recorder

Connection Devices

The following table lists the devices that AdvancedUserConnect can connect to. Data can be collected by registering devices to the Software and connecting via communication interfaces.

Model	Release Number	Interface Ethernet
GM10	R2.02 or later	Yes
GX10	R2.02 or later	Yes
GX20	R2.02 or later	Yes
GP10	R2.02 or later	Yes
GP20	R2.02 or later	Yes

Model	Optional Code	Supported
GX10 / GX20 GM10		Yes
GX10 / GX20 GM10	/AS Advanced Security Function	Yes

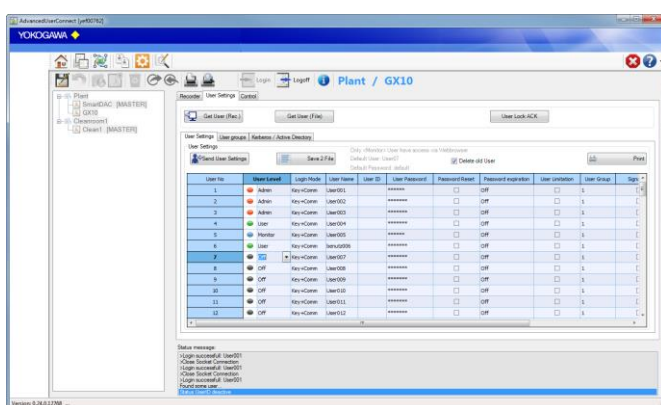
Function

Configuration

Configure the Plant and add the Recorder to the plant.

- One Plant is default incl. and unlimited recorder in one Plant.
- Only one Recorder can define as Master Recorder per Plant.

The Software can work together / parallel with other monitoring software solutions, like GA10 or MCPS (www.MCPS.de)



Export / Import

You can export/import a plant. Also a Recorder configuration file (*.GNL) can be import.

Online / Offline

You can use the software in online or in offline mode.

- Online: Read the User and Group settings from the Recorder, change the settings and write the settings back to the Recorder
- Offline: Configure the User and Group settings offline and send it later to the Recorder.

Optional Functions

Multi Plant (/MP)

With the Multi Plant option it is possible to defined more than one Master Recorder to implement different Plants. Use Recorder at the Sterilisation Area and the Production Area with different User Settings.

Audit Trail (/AT)

If a Recorder use with the Option /AS, it is possible to use the Audit Trail Option of the software. Within this software option, it will be log every User Changes and also every System Change at the Software and at the Recorder.

The Software support Login with Username, User ID and User Password.

There are three Administrator Accounts implemented. It is also possible to use an "Admin" Account of a Master Recorder.

PC System Requirements

Hardware

Item	Description
CPU	Pentium 4, 3.2 GHz or faster
Main memory	2 GB or more
Hard Disk	40 MB or more of free space
Mouse	Mouse compatible with OS
Display	1024 x 768 dots or higher, 65536 colors or more
Communication Ports	Ethernet port compatible with the OS.

Operating system 1

OS	Edition	32bit	64bit
Windows 7	Professional	Yes	Yes
Windows 10	Pro	Yes	Yes
Windows Server 2012	Standard	Yes	Yes
Windows Server 2012 R2	Standard	Yes	Yes
Windows Server 2016	Standard	Yes	Yes

- 1 Make sure to use the same language setting for this software, Windows OS, and the recorders that data is to be collected from.
- 2 Exclude operating systems that Microsoft has finished supporting from "PC System Requirements."

Windows .Net Framework

- Version 2 Full installation
- Version 4 Full installation

Firewall Settings

The Software uses the Port TCP 34434 as default for the Communication to the SmartDac device. For the Web Interface the Port 80 is in use.

Within the Setup routine the Software will be apply into the Windows Firewall.

▪ Model and Suffix Codes

Model	Optional Code	Description
Advanced UserConnect		Software One Plant incl.
	/MP	Multi Plant
	/AT	Audit Trail

Implemented default Language:

English
German

▪ How the software is provided

Name	Description
License sheet	Contains the license keys. Check that the correct number of licenses are present.
Software Downloading Software and Manuals	1 sheet (A4 size)

Software

Download the latest version from the following URL:

www.AdvancedTools.de

Demo Version

Demo Version is available without setting a license number.

User's Manual

Product user's manuals can be downloaded or viewed at the following URL. To view the user's manual, you need to use Adobe Reader 7 or later by Adobe Systems.

www.AdvancedTools.de

Trademarks

- SMARTDAC+ is a registered trademark of Yokogawa Electric Corporation.
- Microsoft, MS and Windows are registered trademarks of Microsoft Corporation USA.
- Adobe and Acrobat are registered trademarks or trademarks of Adobe Systems Incorporated.
- Pentium and Core is a trademark of Intel Corporation in the United States and/or other countries.
- Ethernet is a registered trademark of XEROX Corporation.
- Other company and/or product names are registered trade mark of their manufactures.
- The company and product names used in this document are not accompanied by the registered trademark or trademark symbols (® and ™).

YOKOGAWA Deutschland GmbH

Broichhofstraße 7-11
Germany 40880 Ratingen
Tel.: +49-2102-4983-0
Fax: +49-2102-4983-22
www.yokogawa.com/de
info@de.yokogawa.com