



AdvancedUserConnect Installation Manual

YOKOGAWA Deutschland GmbH
Broichhofstraße 7-11
40880 Ratingen / Germany
Tel. +49 - 2102 - 4983 - 0

Content:

1.	Introduction	3
2.	Revision	6
3.	System Requirements	8
3.1	Hardware	8
3.2	Software.....	9
3.3	Prerequisite	10
3.4	Operating System	11
3.5	Firewall Settings.....	13
4.	Preperation	14
4.1	Necessary data	14
4.2	Trial version	16
4.3	Download	17
4.3.1	Internet Explorer Message	18
5.	Installation Procedure Diagram.....	22
6.	Installation .Net Framework	26
6.1	Windows Server 2016	26
6.2	Windows 10.....	51
6.3	Windows 7.....	61
7.	Software Installation	63
7.1	Windows Server 2012 / Windows 7.....	64
7.2	Windows Server 2016 / Windows 10.....	66
7.3	Software.....	68
7.4	Using on Domain PC.....	98
8.	Firewall	104
8.1	Windows 10.....	106
8.2	Windows 7.....	114
9.	Run Program as NT- Service	123
9.1	Installation as local User	124
9.1.1	create a new lokal user:	124
9.2	Installation as User	132
9.3	Change the settings for the service:.....	141
9.4	De-Installation Service	152
10.	De-installation Program	155
11.	Additional Options.....	156
12.	More Solutions.....	158

1. Introduction

The program AdvancedUserConnect performs automatic User Management Synchronization for the Yokogawa SmartDac Paperless Recorder family

For an effective User Management it is possible to activate the times of the function at different intervals.

For updates and changes about the program, please read the info file stored in the installation folder or contact your Yokogawa sales team.



Note:

Please read this manual to find solutions!

2. Revision

Date	Version	Reason
07/2017	0.01	English version / Alpha
04/2018	1	Release Update
05/2018	2	Add User Permisson
08/2018	3	Update Windows Server 2016 Windows 10
09/2018	4	Update Installation procedure description

3. System Requirements

3.1 Hardware

For the analysis using a PC, the following minimum hardware requirements must be met.

Hard disk capacity: 40 MB

- Memory: 4GB
- Firewall Settings: Port 34434 TCP / UDP

3.2 Software

The program AdvancedUserConnect is Windows based and requires therefore a Windows Operating System.

3.3 Prerequisite

- Windows .Net Framework 2 Full installation
- Windows .Net Framework 4 Full installation (will be check by setup)
 - <http://www.microsoft.com/en-us/download/details.aspx?id=17718>

3.4 Operating System

The program has been tested on the following platforms¹:

- Windows 7 [32bit]
- Windows 7 [64bit]
- Windows 10 [32bit]
- Windows 10 [64bit]
- Windows Server 2012
- Windows Server 2012R2
- Windows Server 2016

3.5 Firewall Settings

The Software uses the Port TCP 34434 as default for the Communication to the SmartDac device. For the Web Interface the Port 80 is in use.

Within the Setup routine the Software will be apply into the Windows Firewall.

¹ Microsoft Windows is a registered trademarks or trademarks of Microsoft Corporation in the United States and/or other countries

4. Preparation

4.1 Necessary data

For the installation of the program the file SetupAdvancedUserConnect_xxx.exe, and a license number are required.

The license number will be given at the delivery of the package. Keep this information carefully!

4.2 Trial version

For trial leave the field for the serial no empty.

All functions are available in the trial function as well. During only the first 3 Users and 2 Recorders are synchronized with the DEMO Mode.

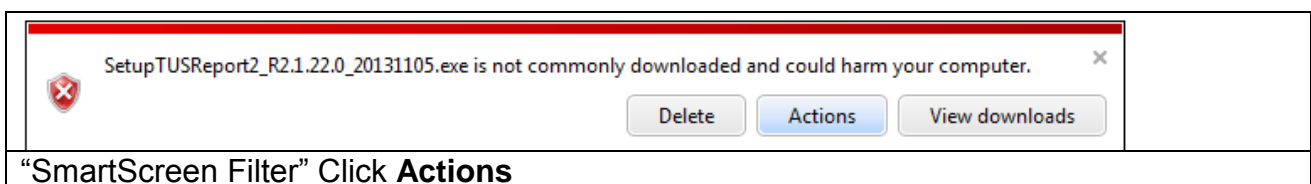
4.3 Download

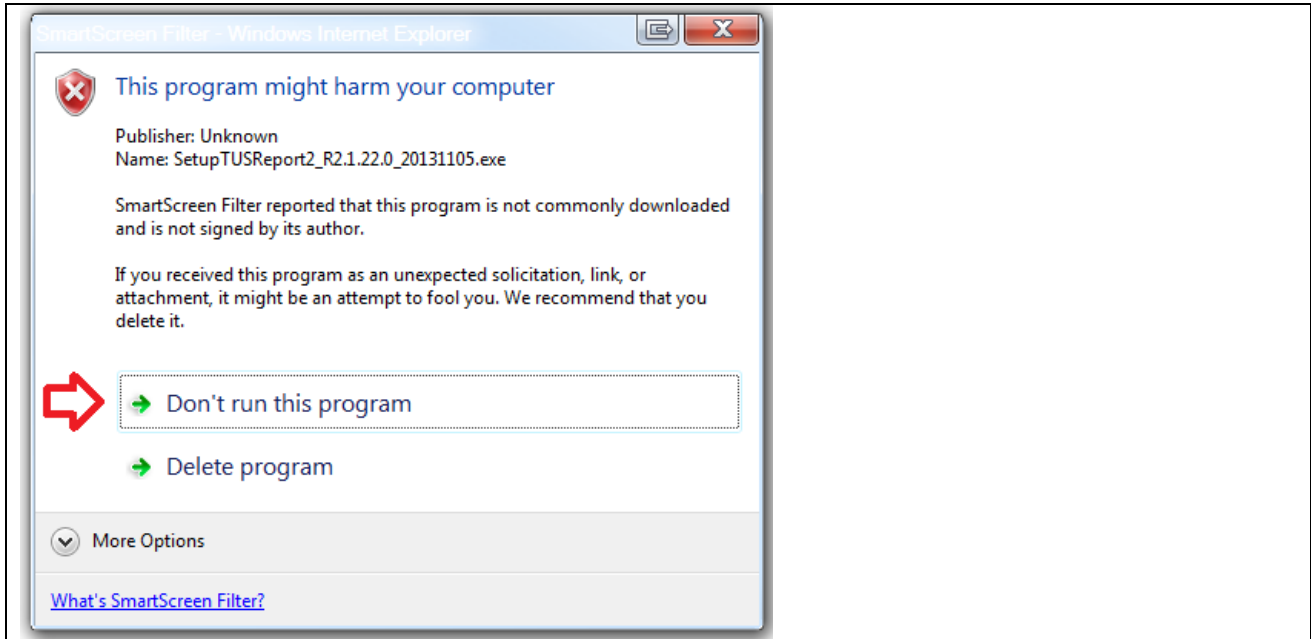
Load the latest version of our solution from the following web Page:

<http://www.AdvancedTools.de>

4.3.1 Internet Explorer Message

If the Internet Explorer Function enables “SmartScreen Filter” you get sometime the following Message Window.

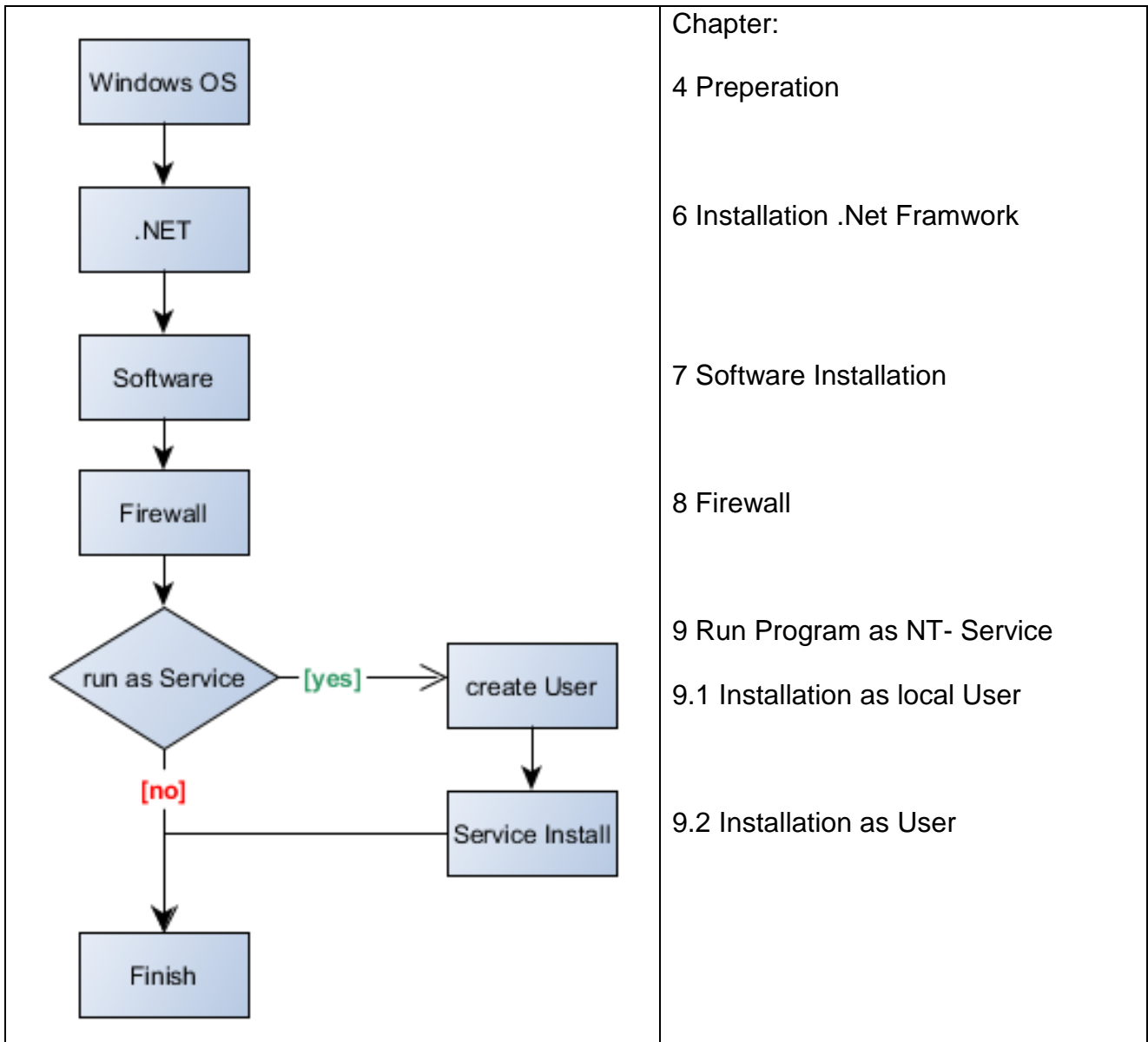




Click **Don't run this program** otherwise it has been download again.

5. Installation Procedure Diagram

For Installation please follow the Installation Diagram. Each step will be described at the following chapter.

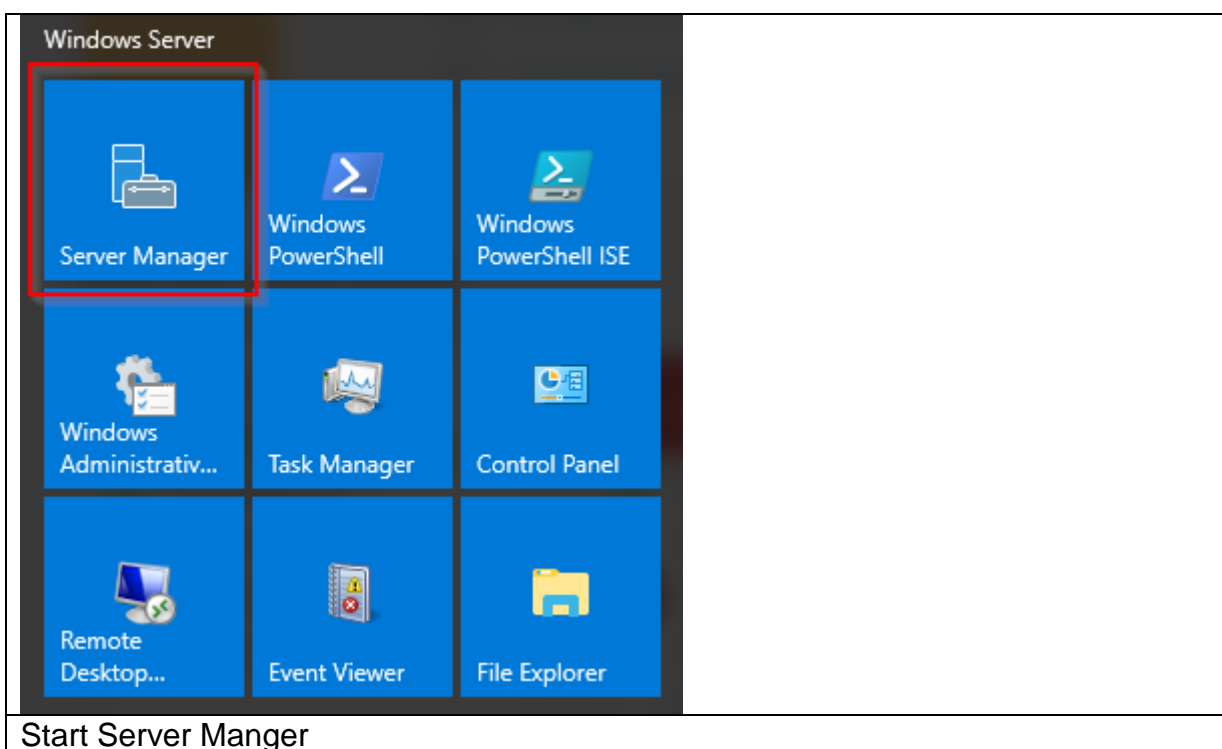


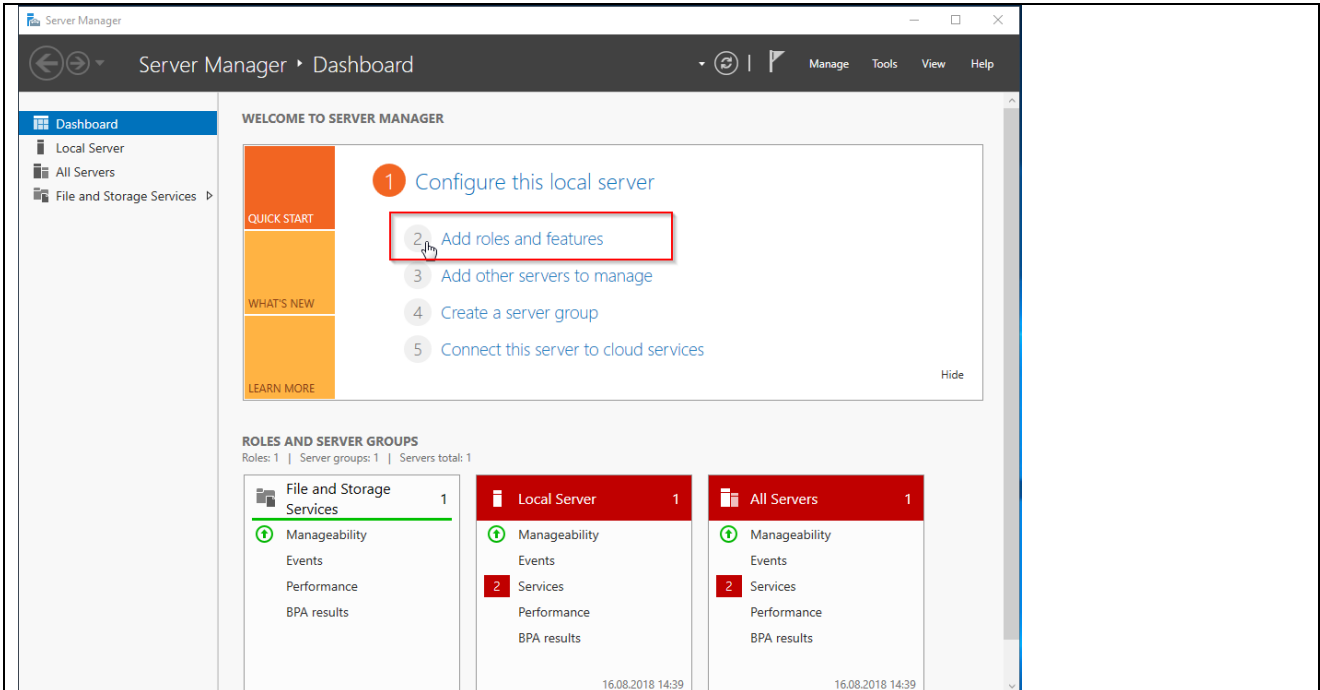
6. Installation .Net Framework

6.1 Windows Server 2016

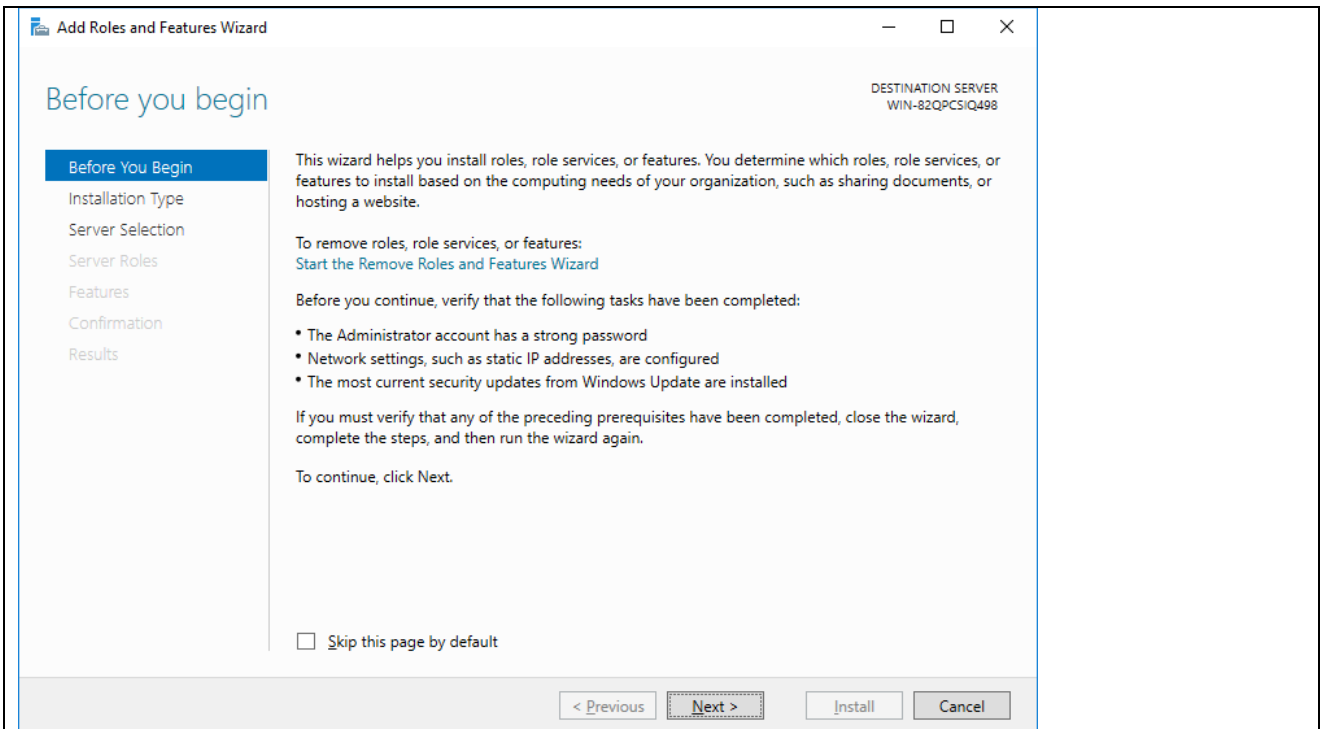
For the installation of Windows .Net Framework it is required to use the Windows installation CD or an Internet connection.

- Windows .Net Framework 2 Full installation
- Windows .Net Framework 4 Full installation

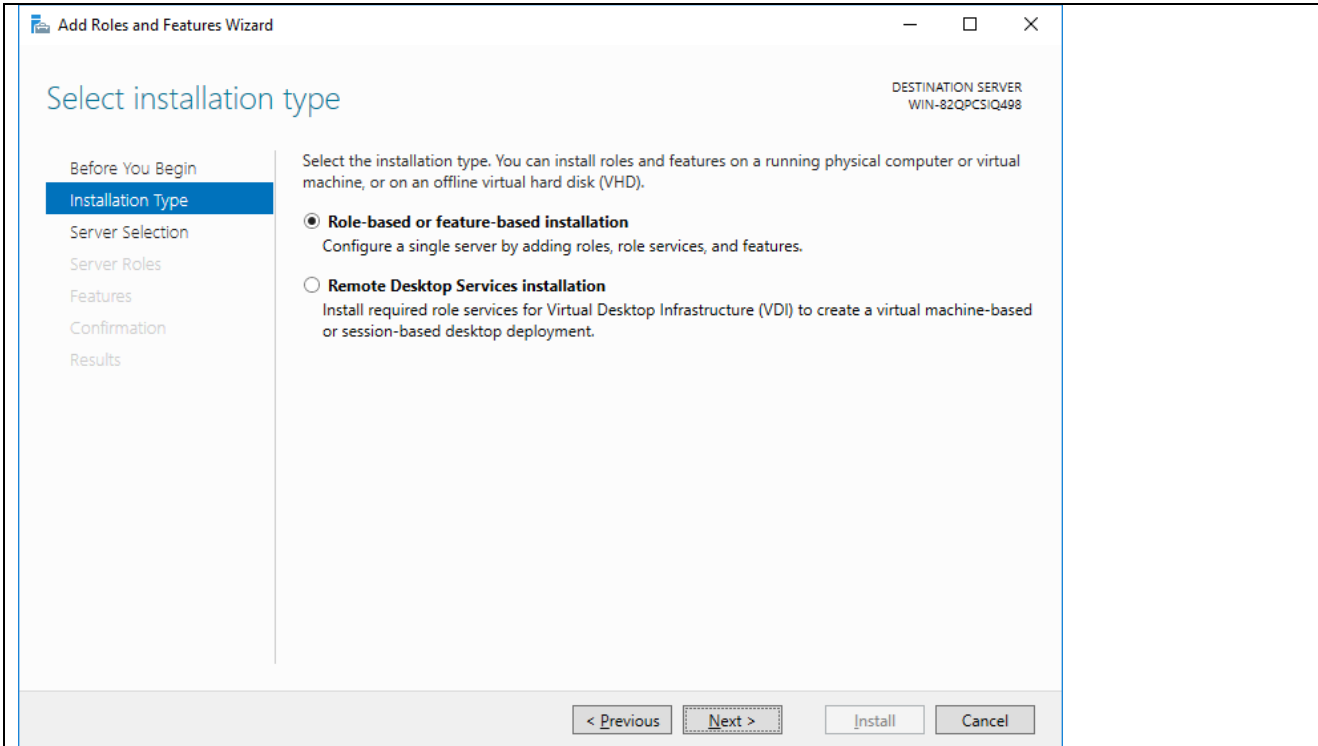




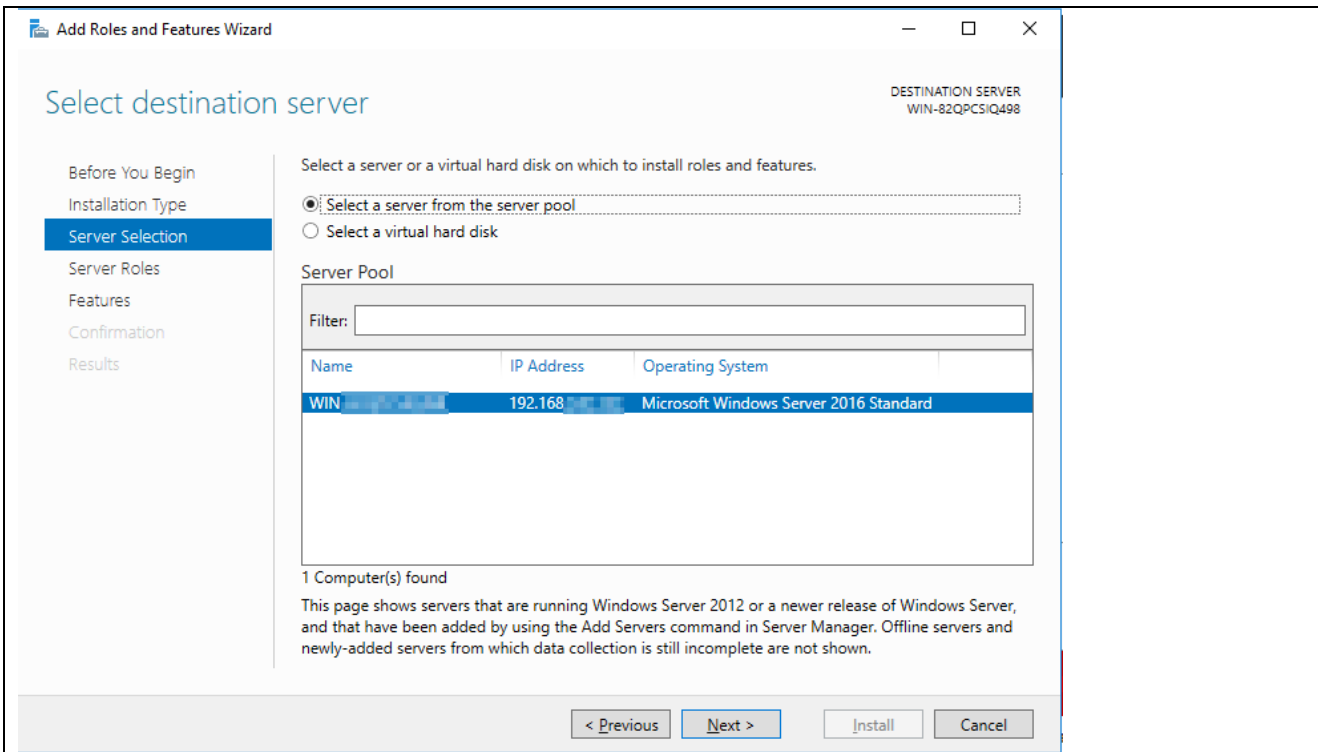
Add a role



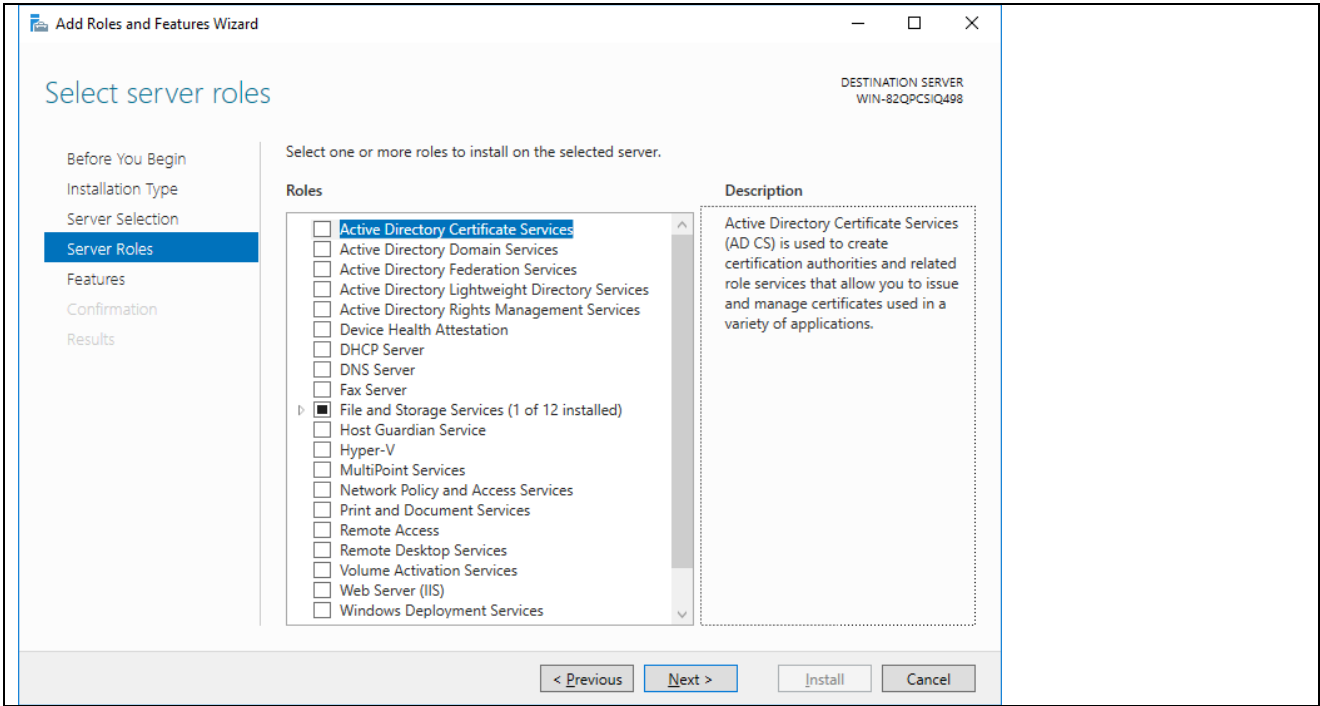
Follow the assistant



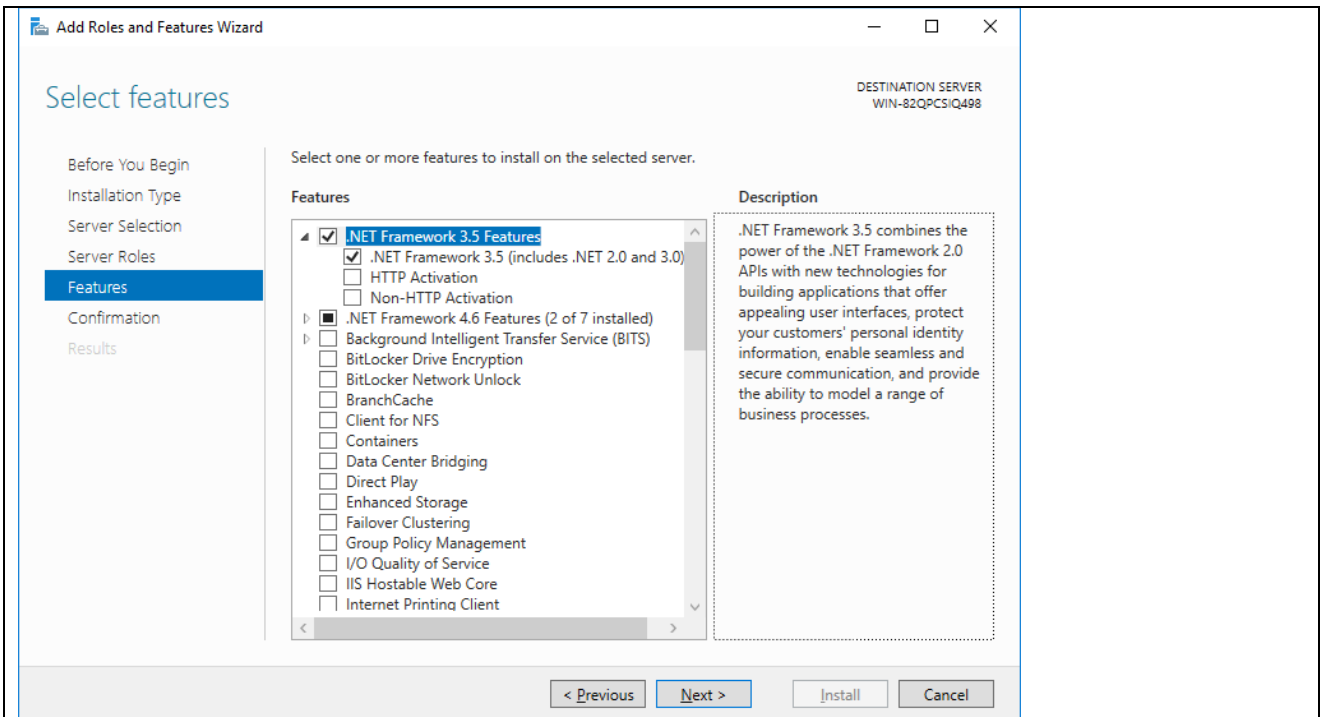
Role based installation



Use the active partition

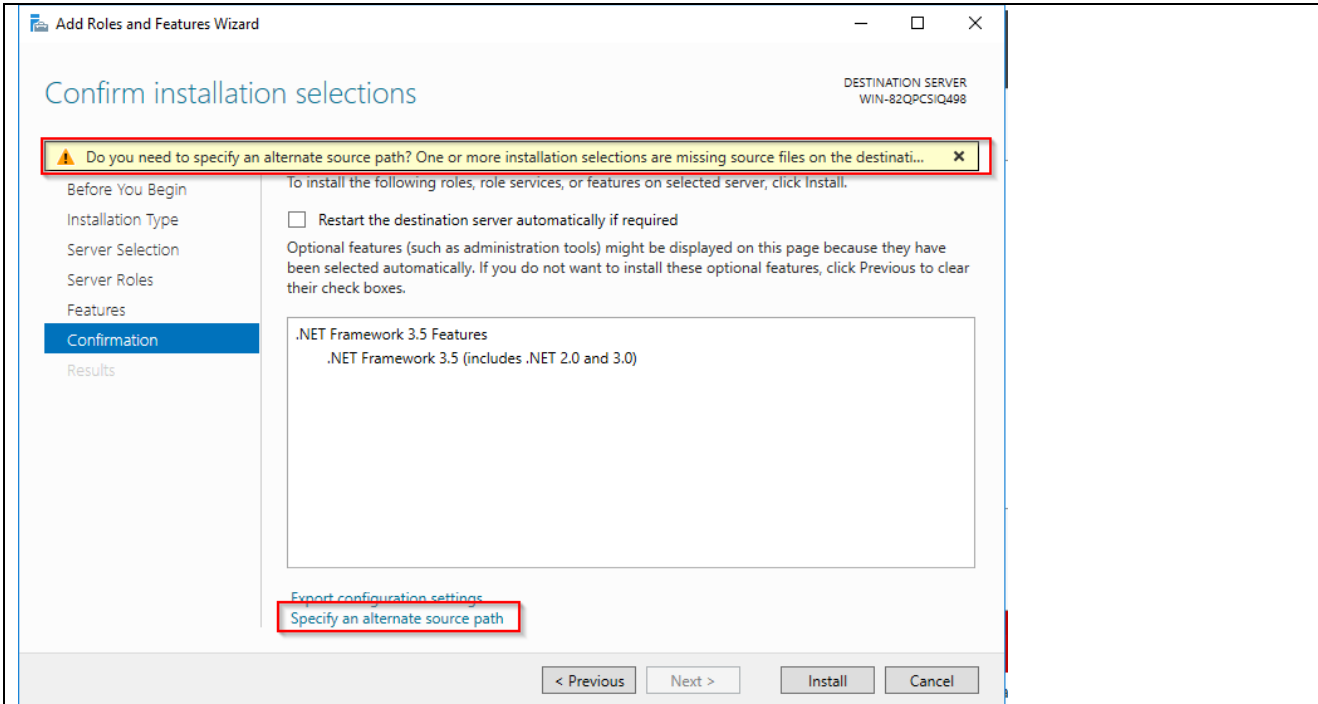


Check no extras

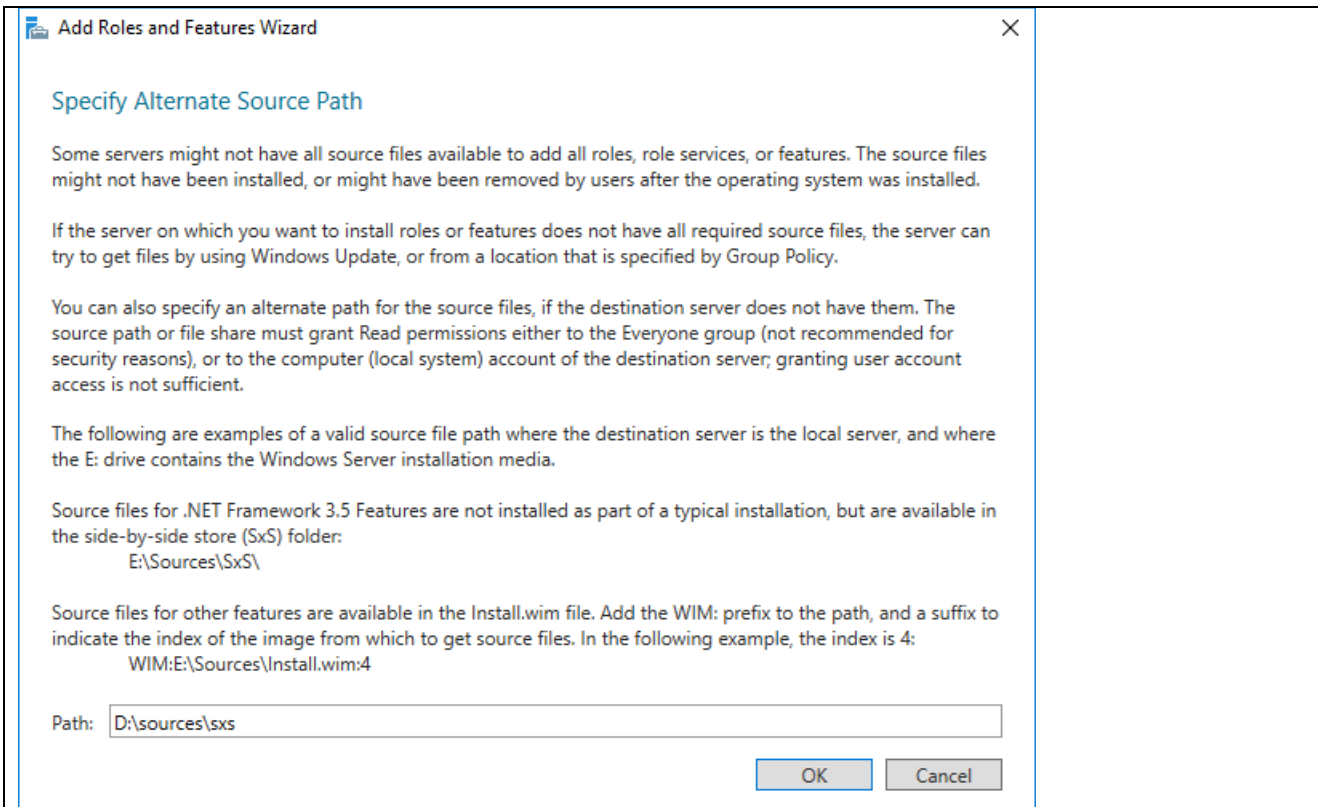


.Net Framework 3.5 Features

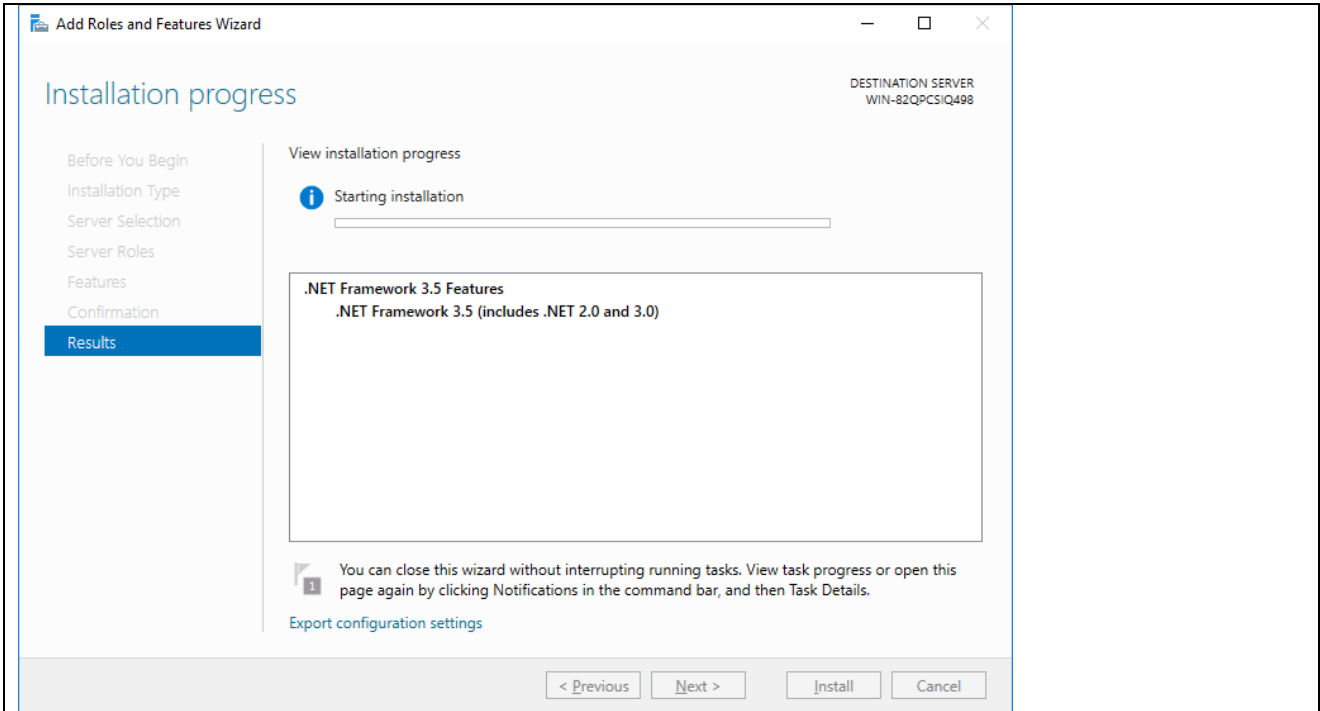
➔ .Net Framework 3.5 Features (include .Net 2.0 and 3.0)



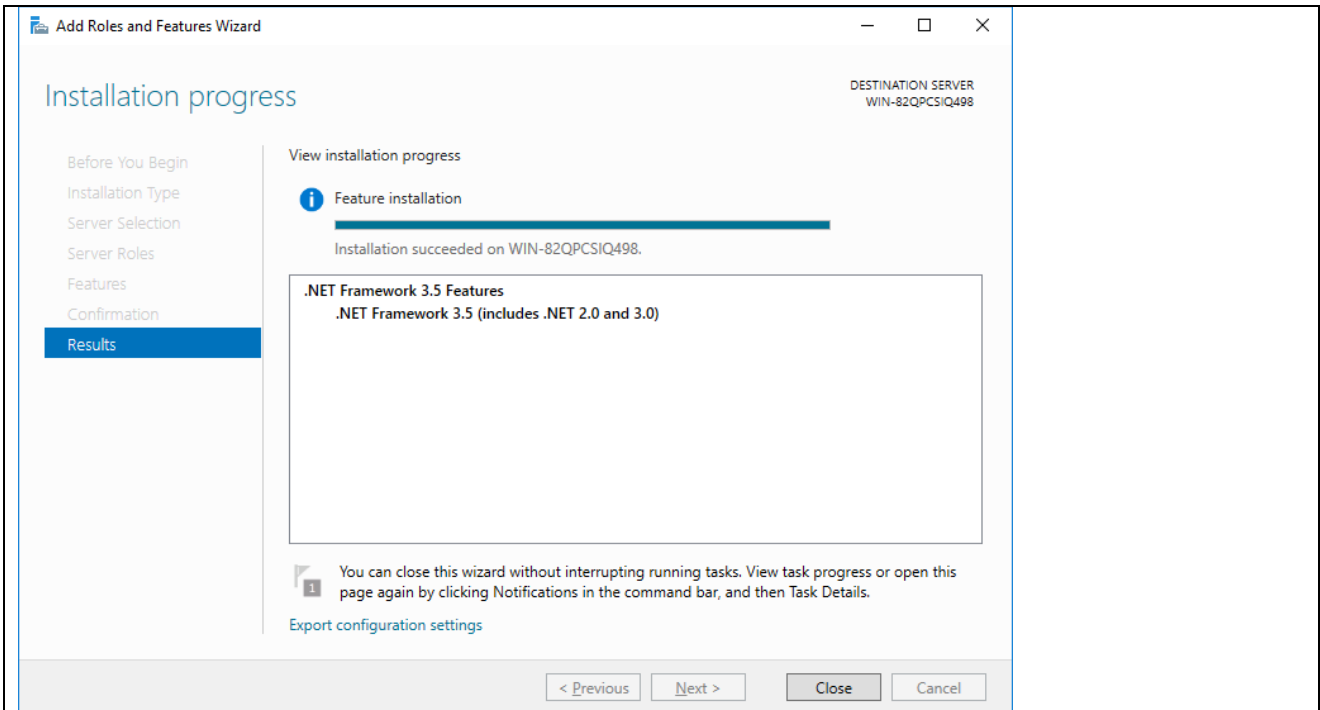
If there is no Internet connection available, select the path to the Windows installation CD.



Use the path with the folder „/SxS“

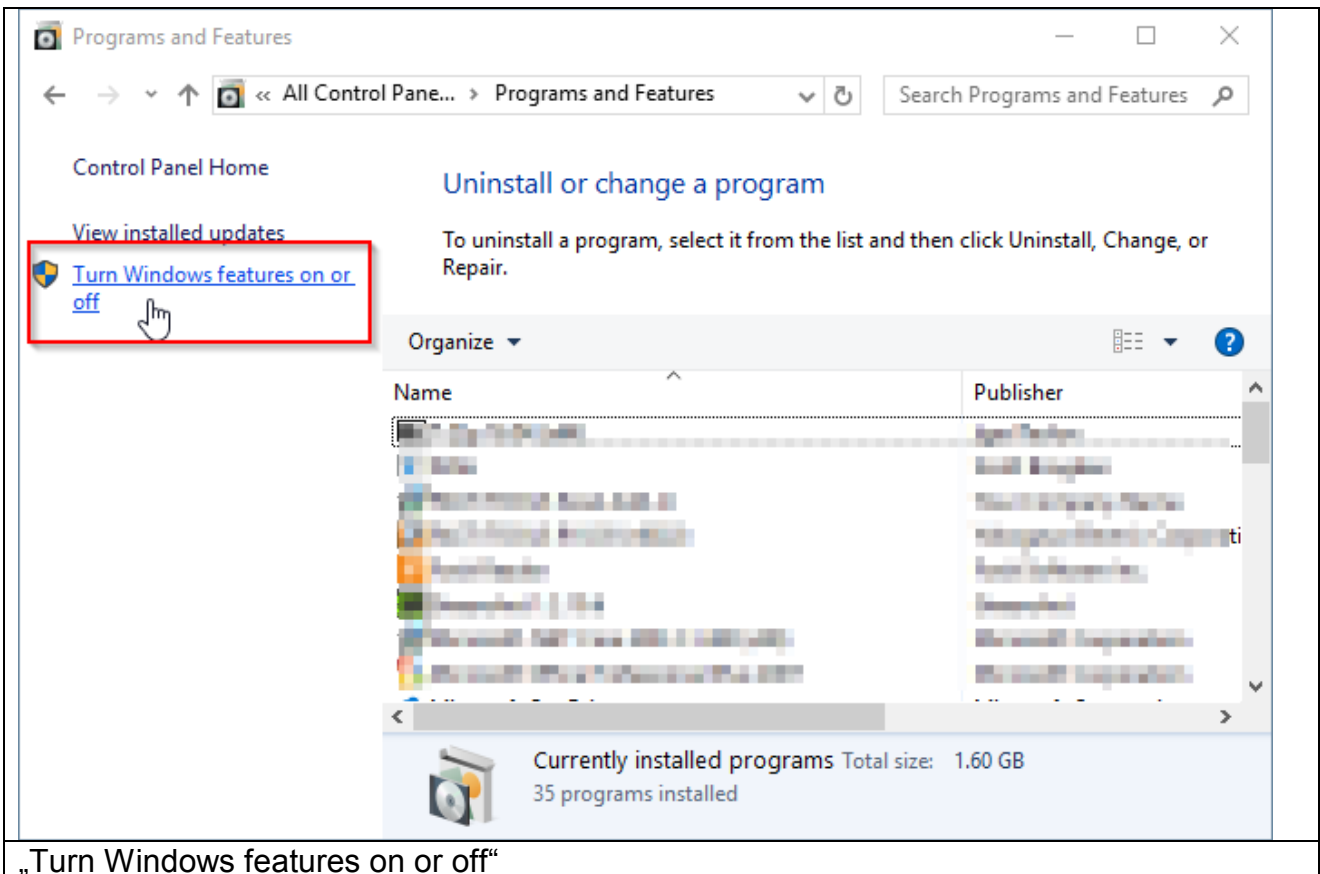
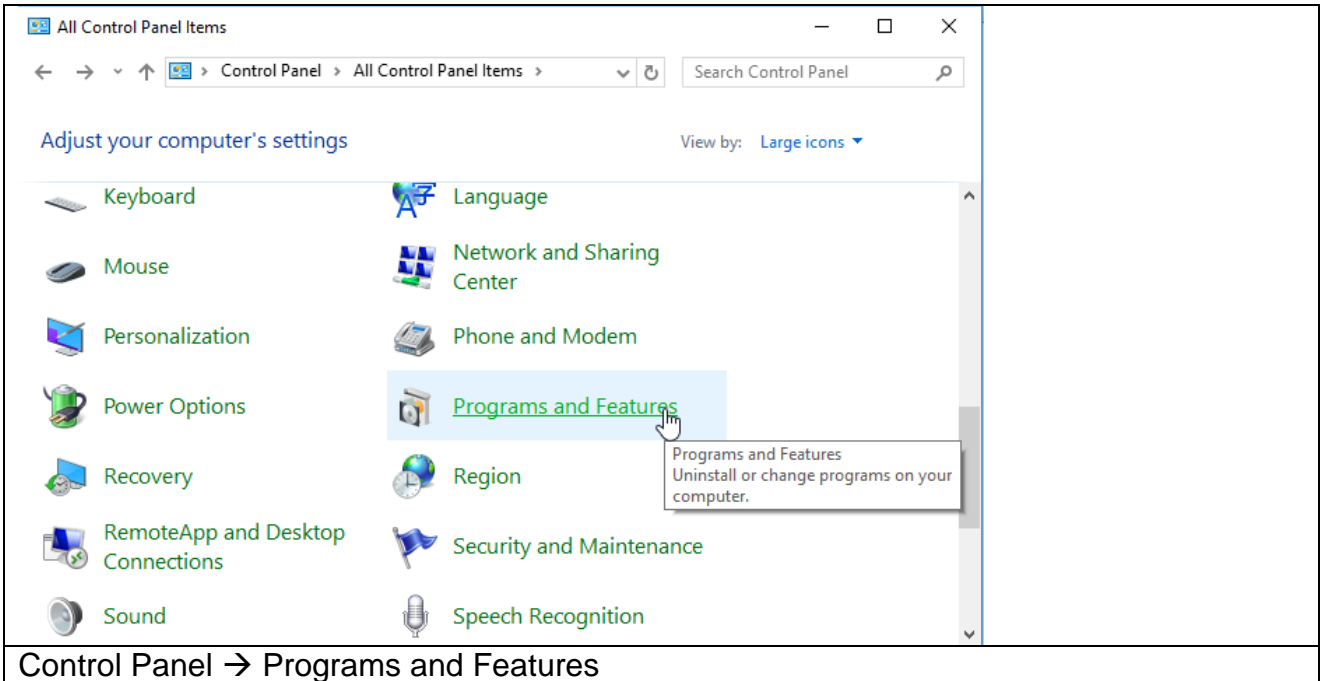


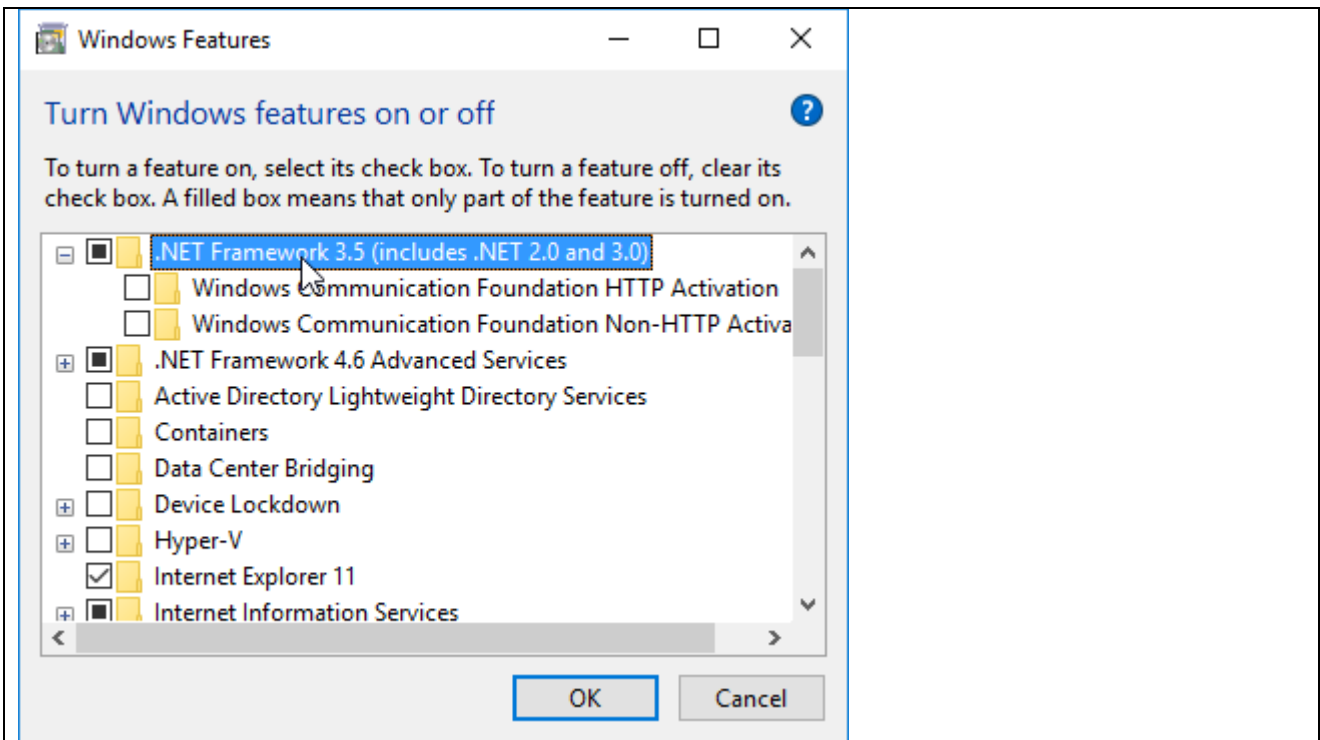
Installation starts



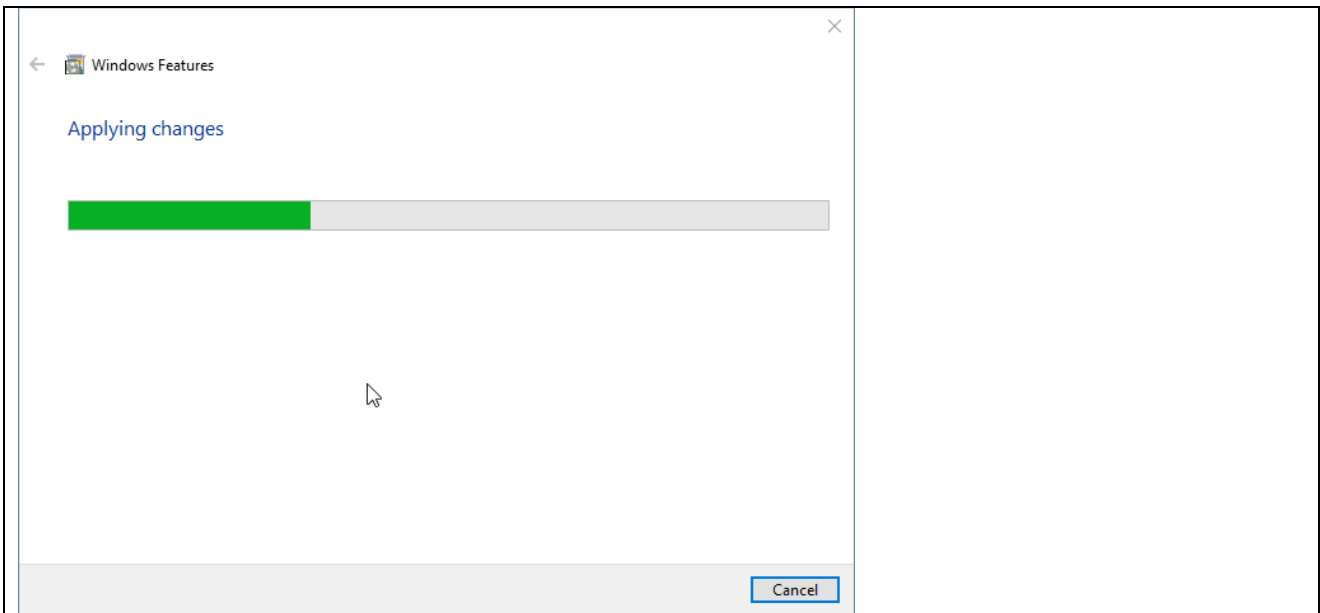
Installation successfully

6.2 Windows 10 Windows .Net installation

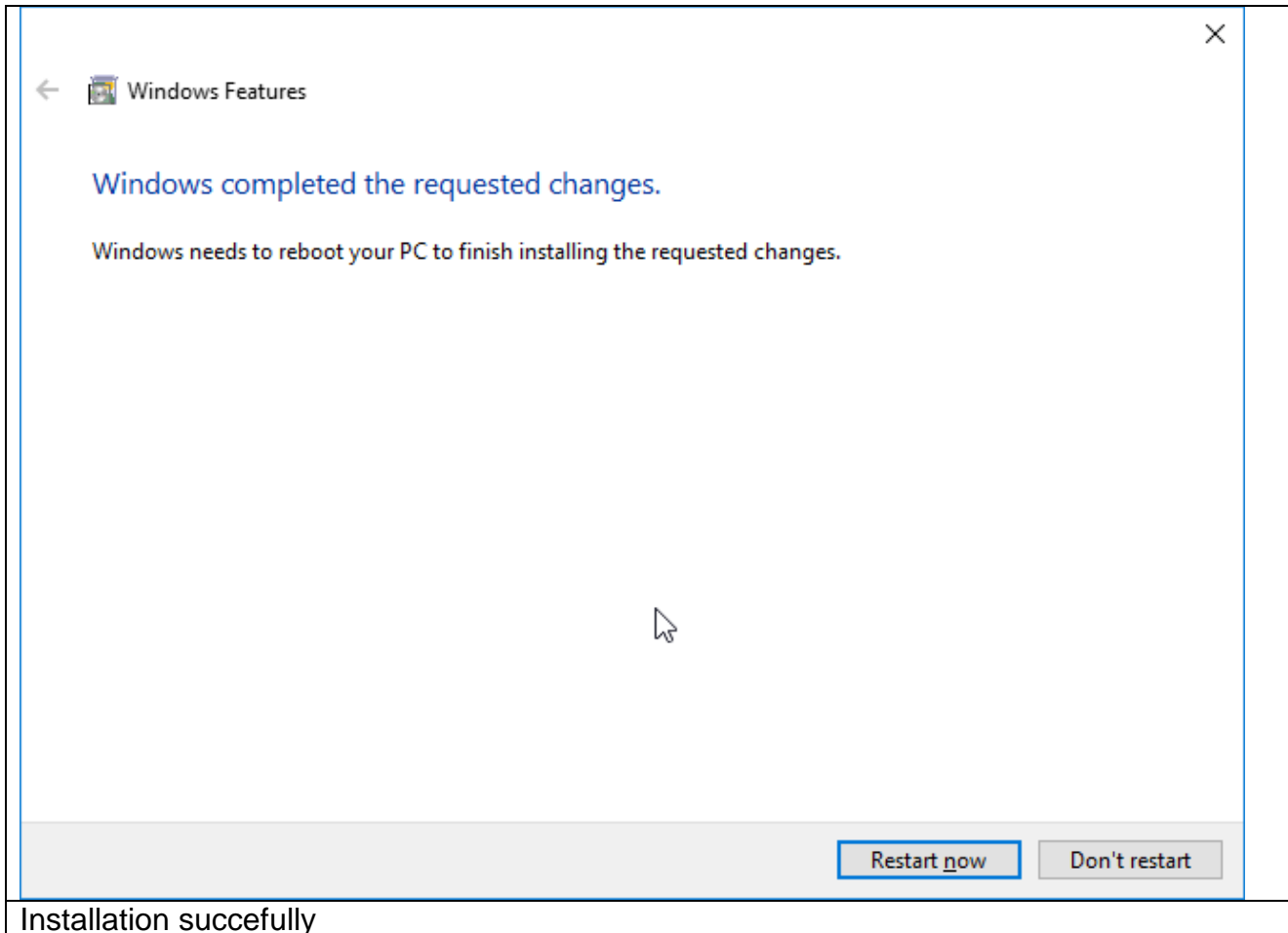




.Net Framework 3.5 Features
→ .Net Framework 3.5 Features (include .Net 2.0 and 3.0)



If there is an Internet connection it will be start automatically.



6.3 Windows 7

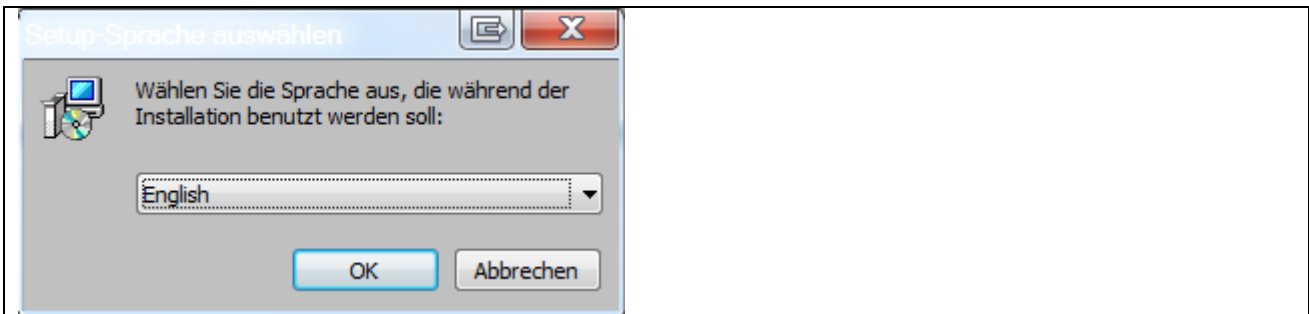
For installation on Windows 7 it is necessary to download the .Net framework from the Microsoft Webpage.

Windows .Net Framework 2 is mostly preinstalled on Windows 7.

- Windows .Net Framework 2 Full installation
- Windows .Net Framework 4 Full installation
 - o <http://www.microsoft.com/en-us/download/details.aspx?id=17718>

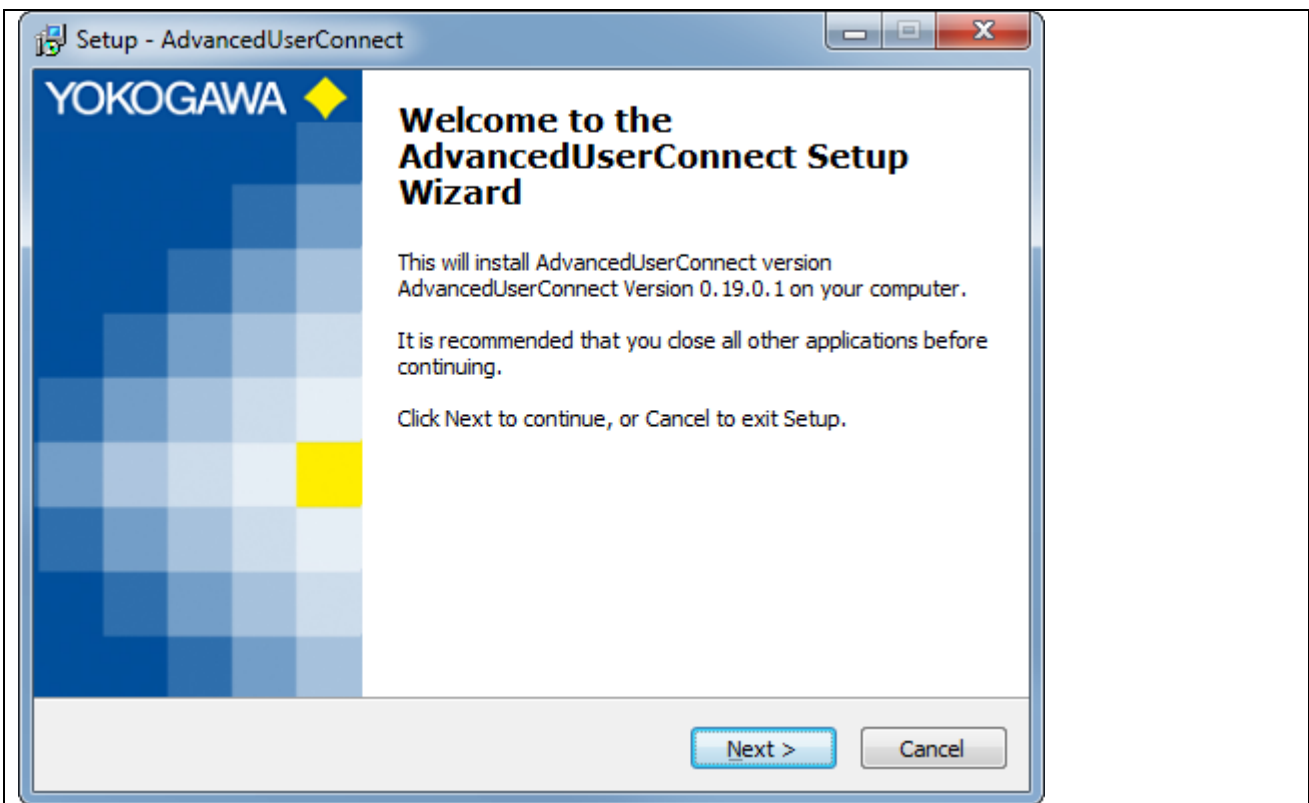
7.3 Software

Then a window to select the language will appear.
Select “English” and confirm it with the “OK” button..

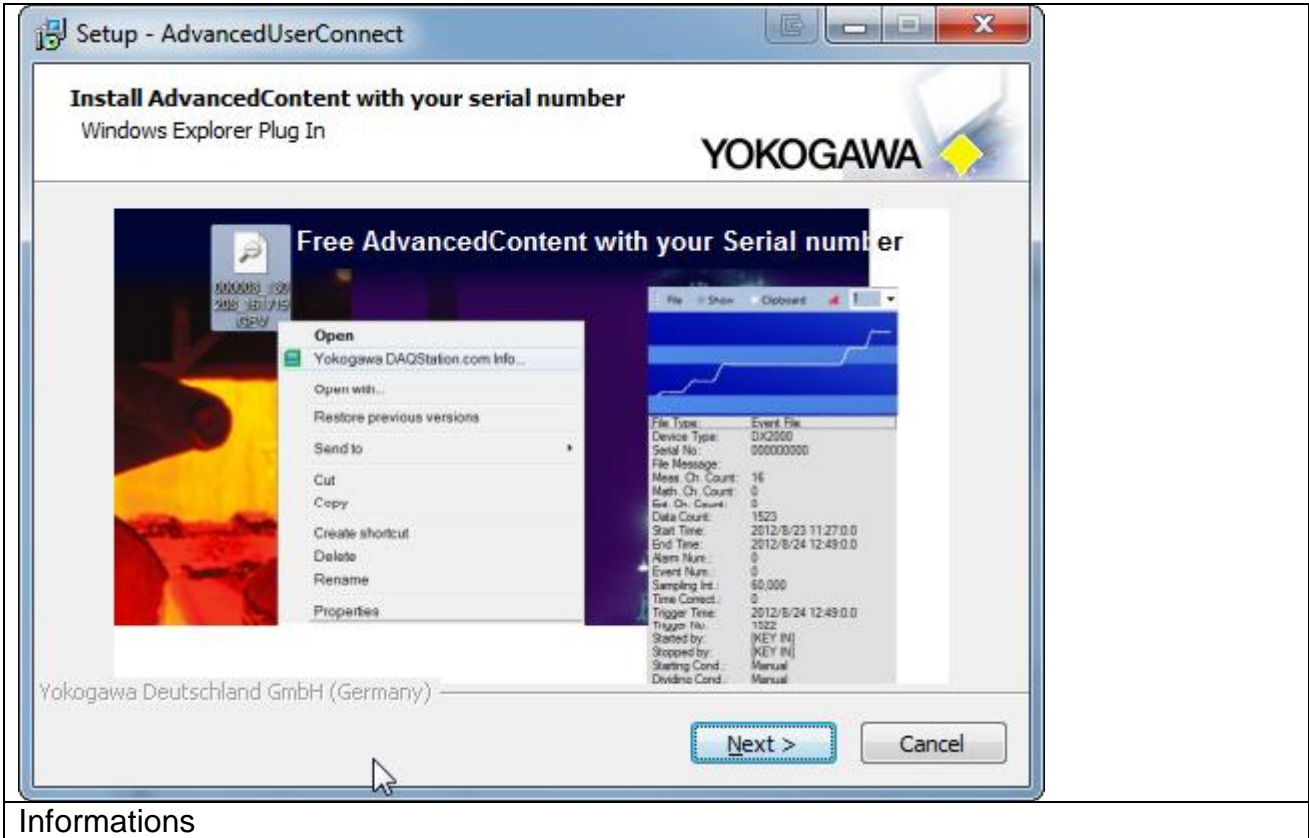


Language selection

Confirm the welcome window with “Next”.



Welcome display



Setup - AdvancedUserConnect

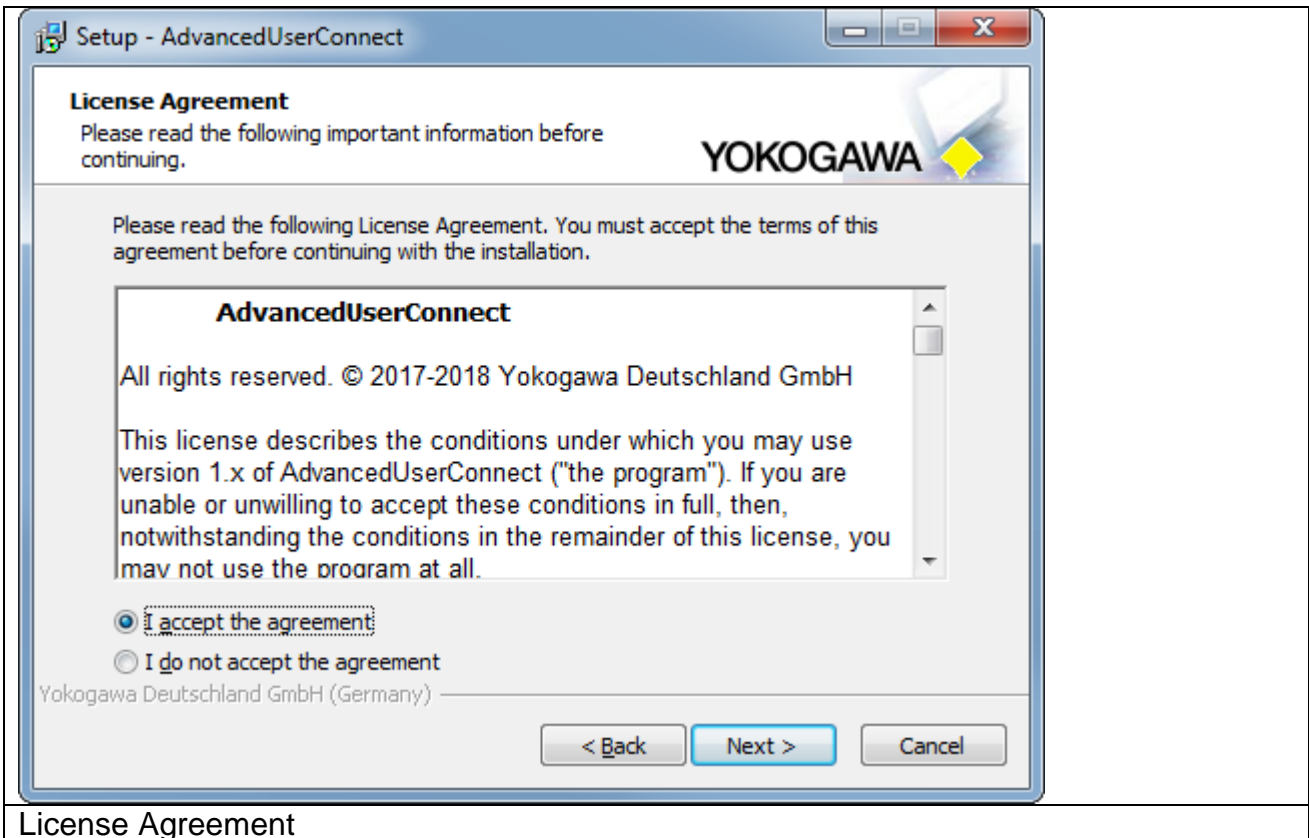
Install AdvancedContent with your serial number
Windows Explorer Plug In

Free AdvancedContent with your Serial number

Yokogawa Deutschland GmbH (Germany)

Next > Cancel

Informations



Setup - AdvancedUserConnect

License Agreement
Please read the following important information before continuing.

Please read the following License Agreement. You must accept the terms of this agreement before continuing with the installation.

AdvancedUserConnect

All rights reserved. © 2017-2018 Yokogawa Deutschland GmbH

This license describes the conditions under which you may use version 1.x of AdvancedUserConnect ("the program"). If you are unable or unwilling to accept these conditions in full, then, notwithstanding the conditions in the remainder of this license, you may not use the program at all.

I accept the agreement

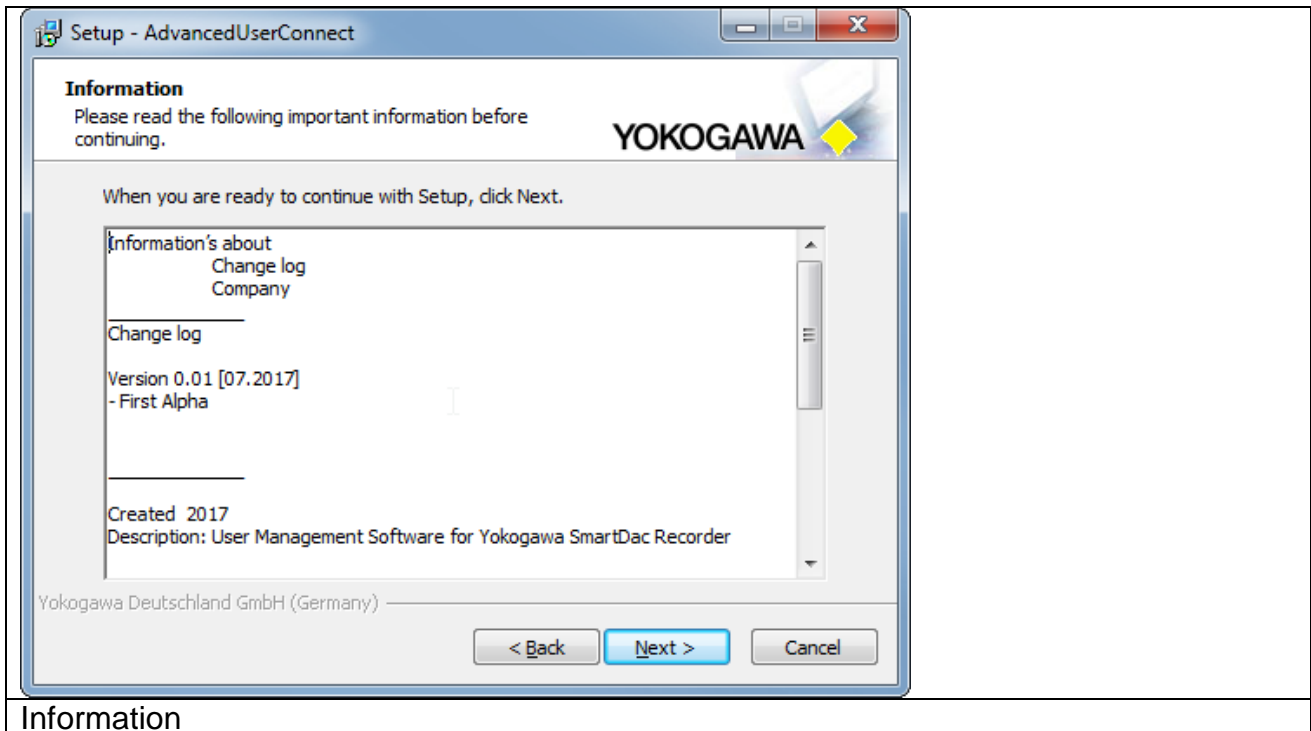
I do not accept the agreement

Yokogawa Deutschland GmbH (Germany)

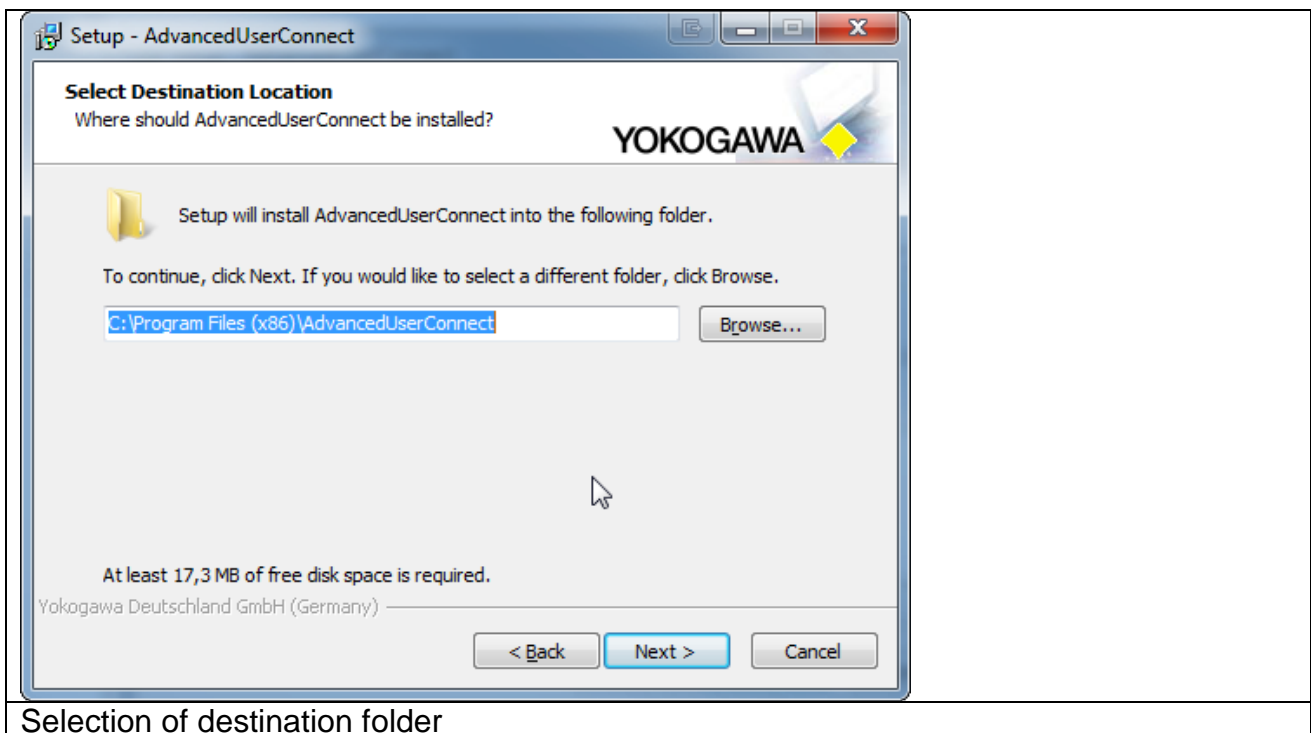
< Back Next > Cancel

License Agreement

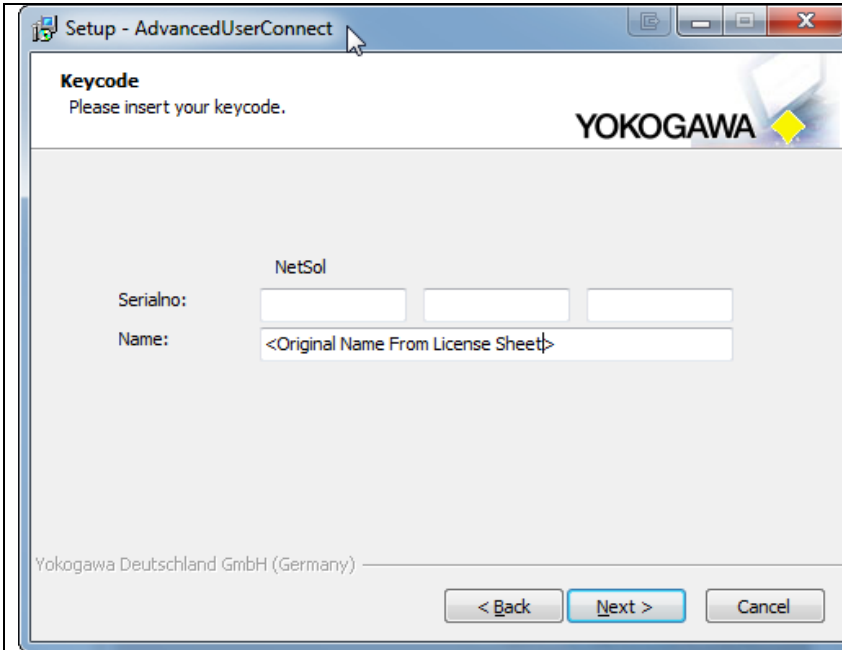
Read the information carefully and confirm it with the button “Next”.



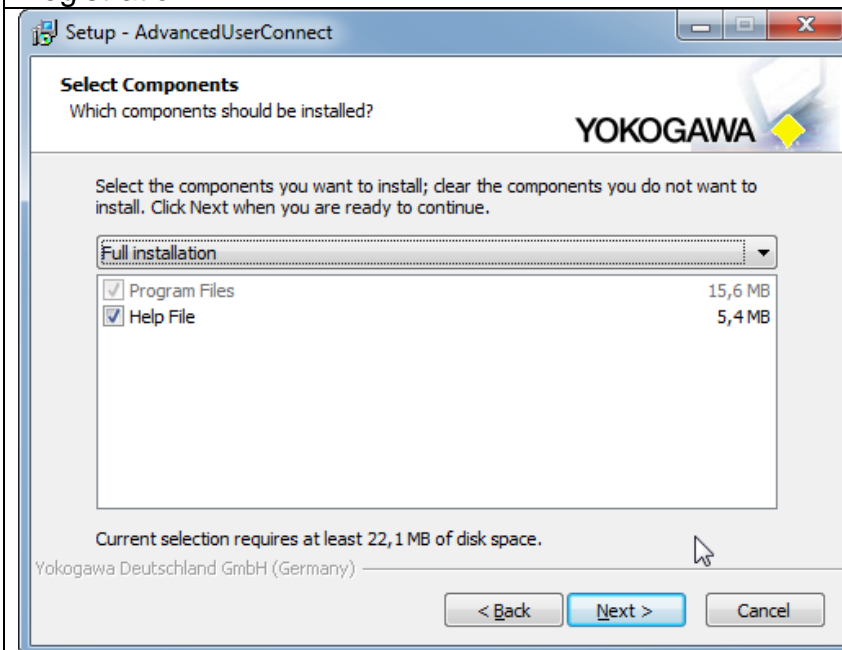
Select the destination location folder for the AdvancedUserConnect program and conform it to the “Next” button.



Then enter the key code and name.
If the key code is correct then the installation of the program will be activated with the button “Next”.

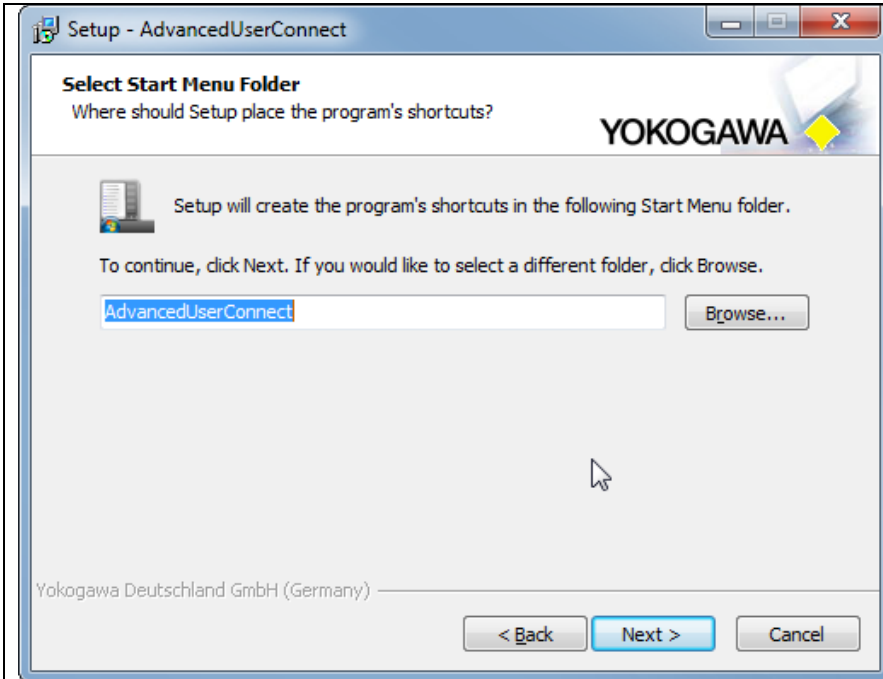


Registration



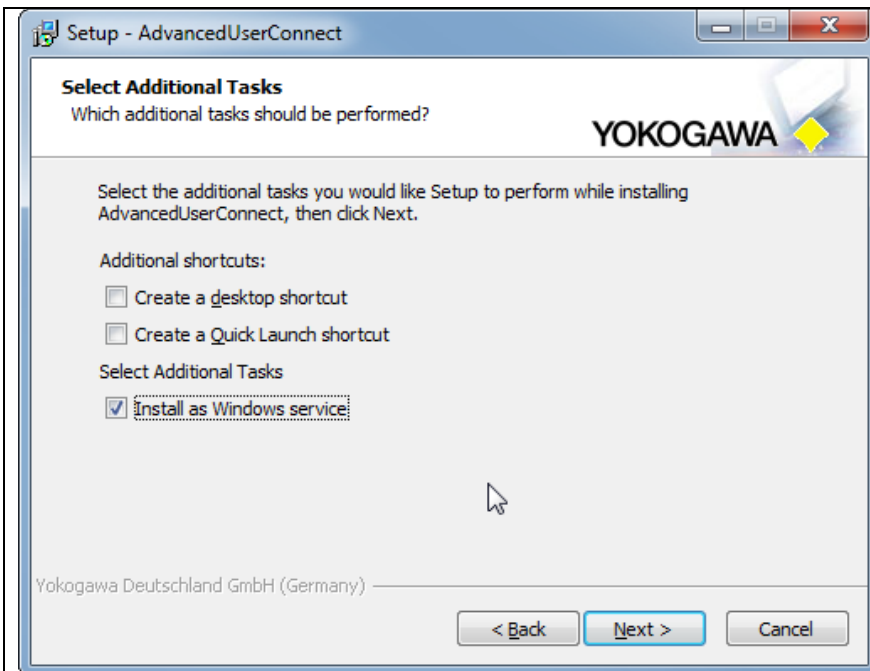
Select option

Select the installation option and confirm the selection with the button “Next”. Use the full installation for the best result.



Startmenu name

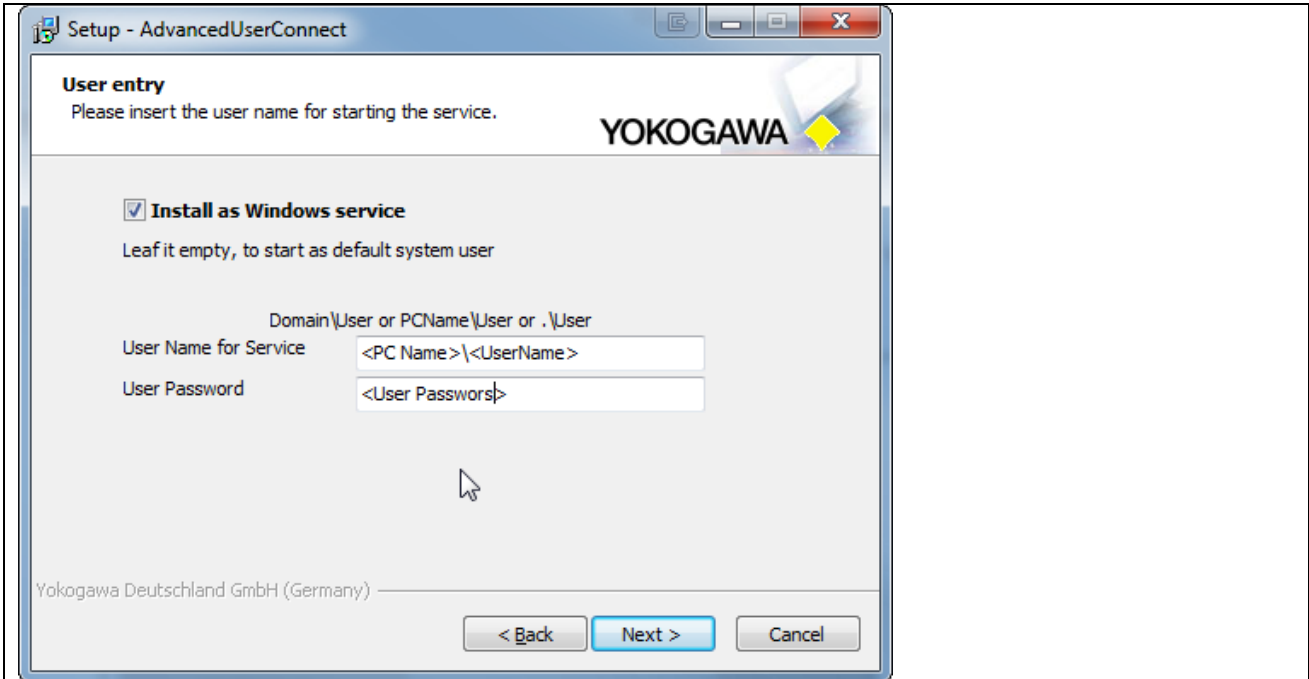
Select the additional task shortcuts activation and confirm it with the “Next” button.



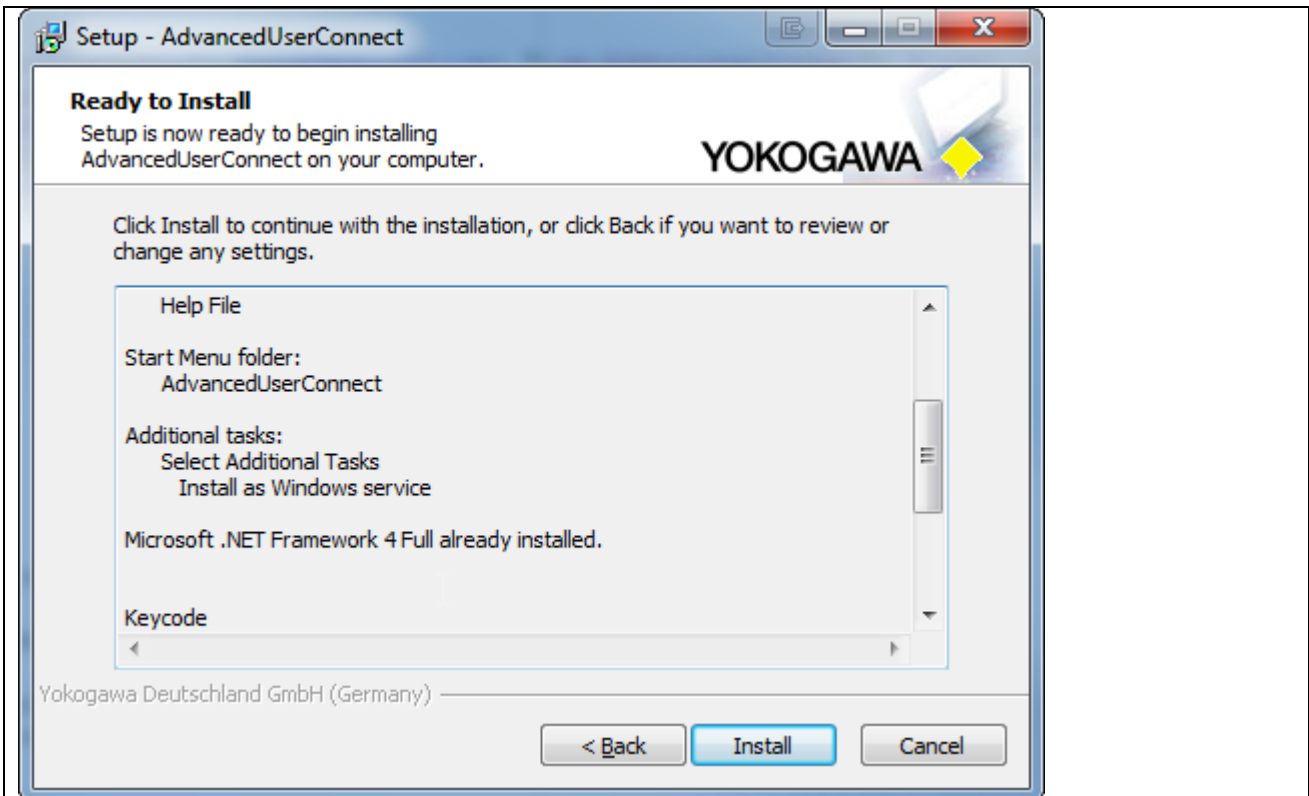
Addition task shortcuts

In the following abstract the listing of the selections made is displayed and can be confirmed by the button “Install”.

If checkbox “Install as Service” checked, the following Form will be shown, otherwise not.

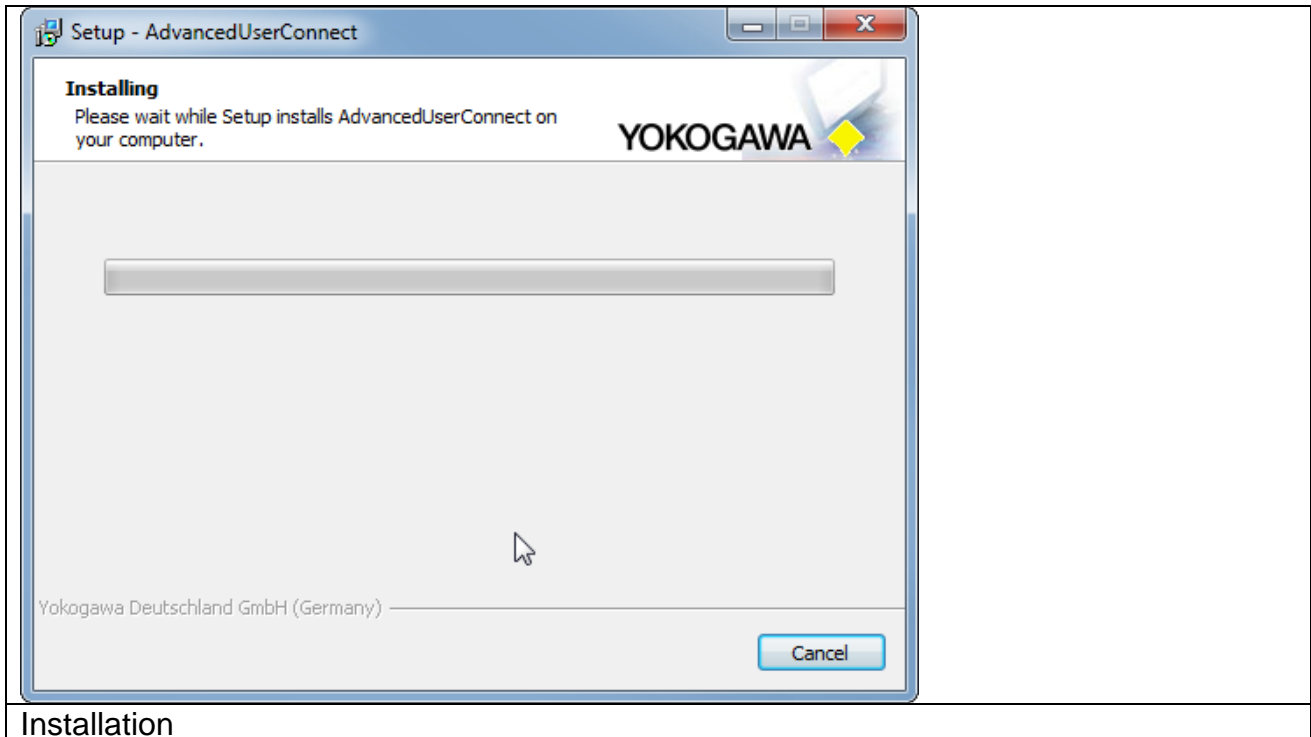


Installation as Service

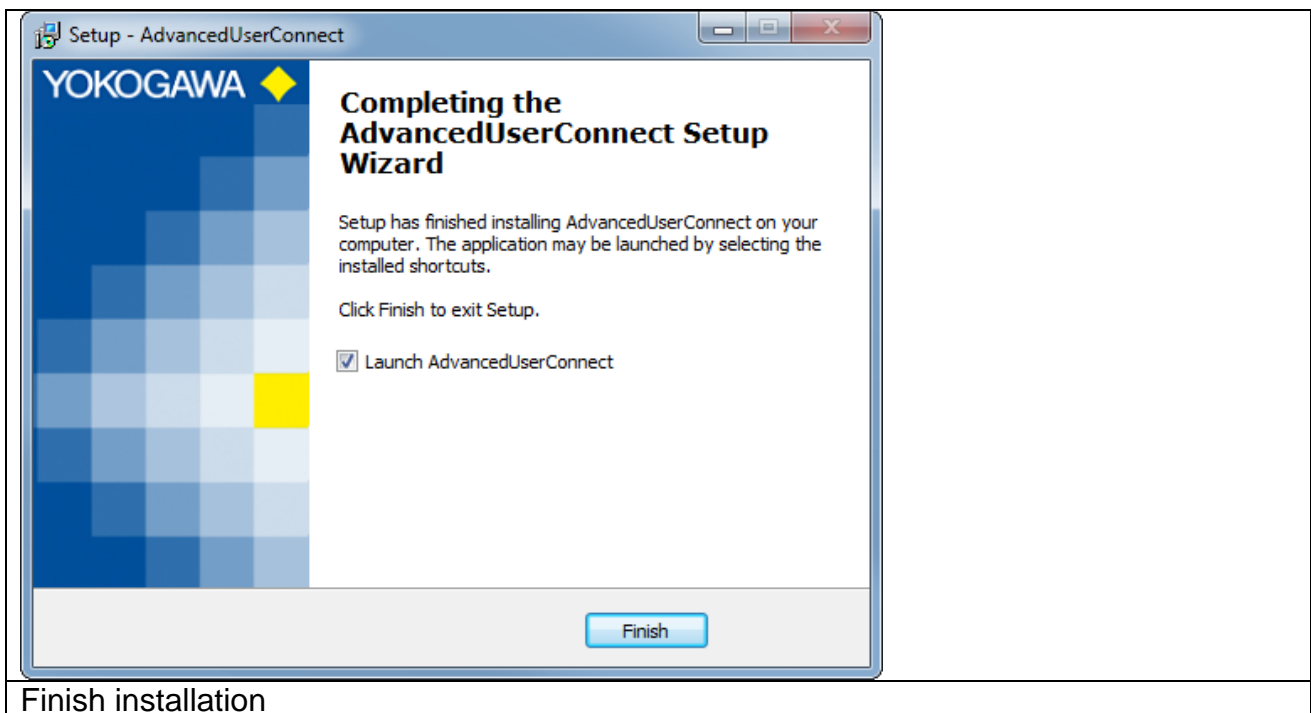


Abstract

The installation of the program starts. With the “Abort” button it is possible to stop the installation.



After installation the button “Finish” have to be pressed.

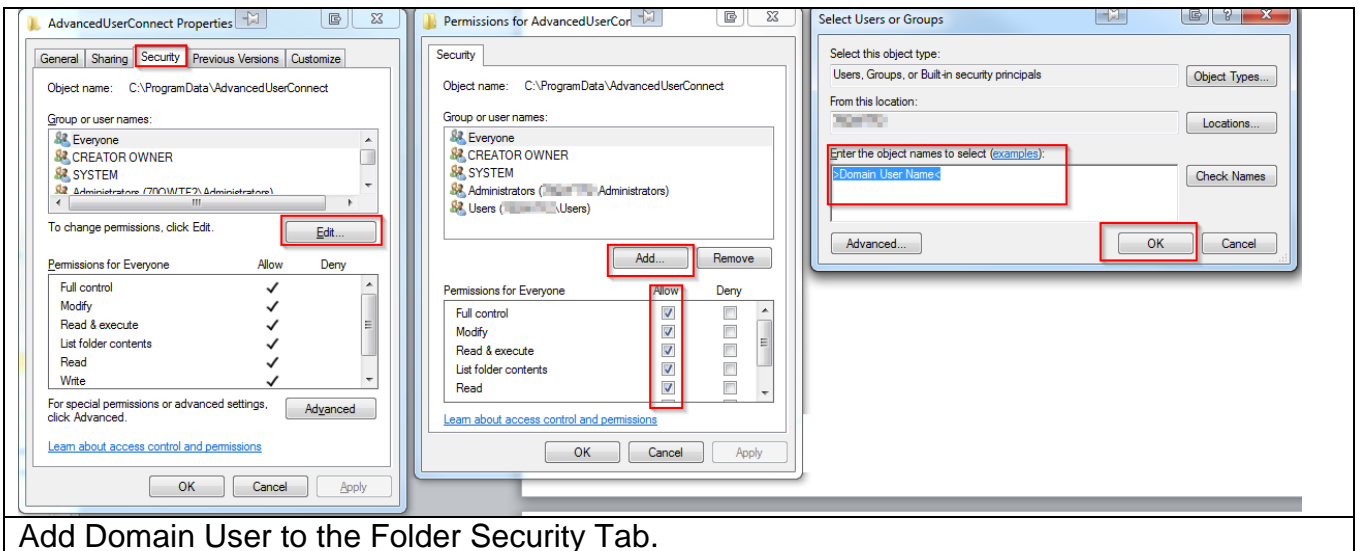
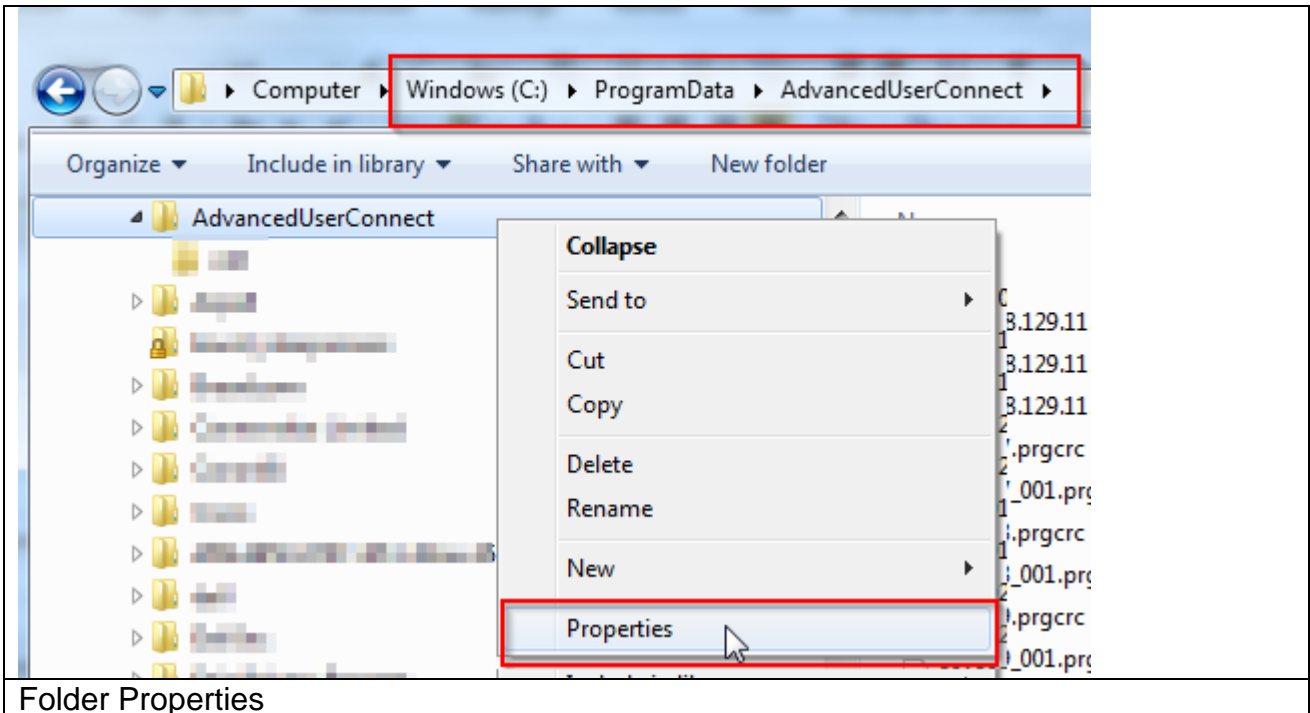


The program can now be started from Start → Programs → AdvancedUserConnect → AdvancedUserConnect.

7.4 Using on Domain PC

To use the software as a Domain User, it is necessary to add the User to the Folder:

C:\ProgramData\AdvancedUserConnect



8. Firewall

Check the settings for the Software Applications:

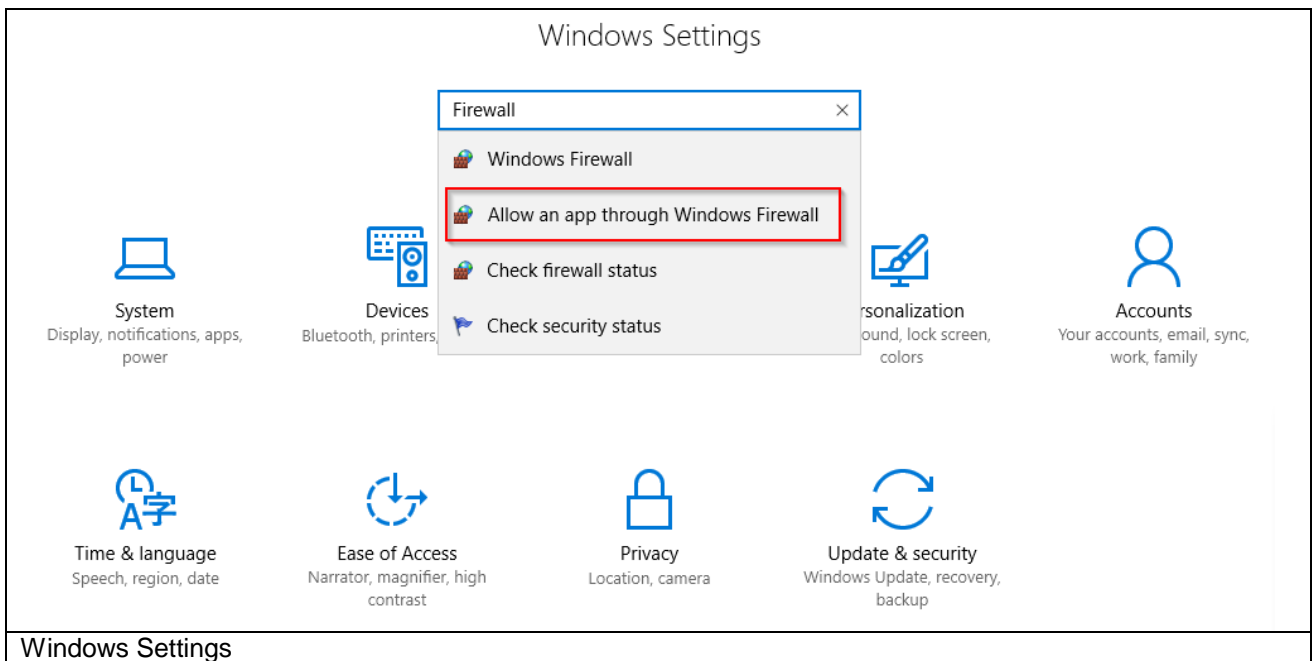
- AdvancedUserConnect.exe →GUI
- AdvancedUsrSVC.exe →Service application

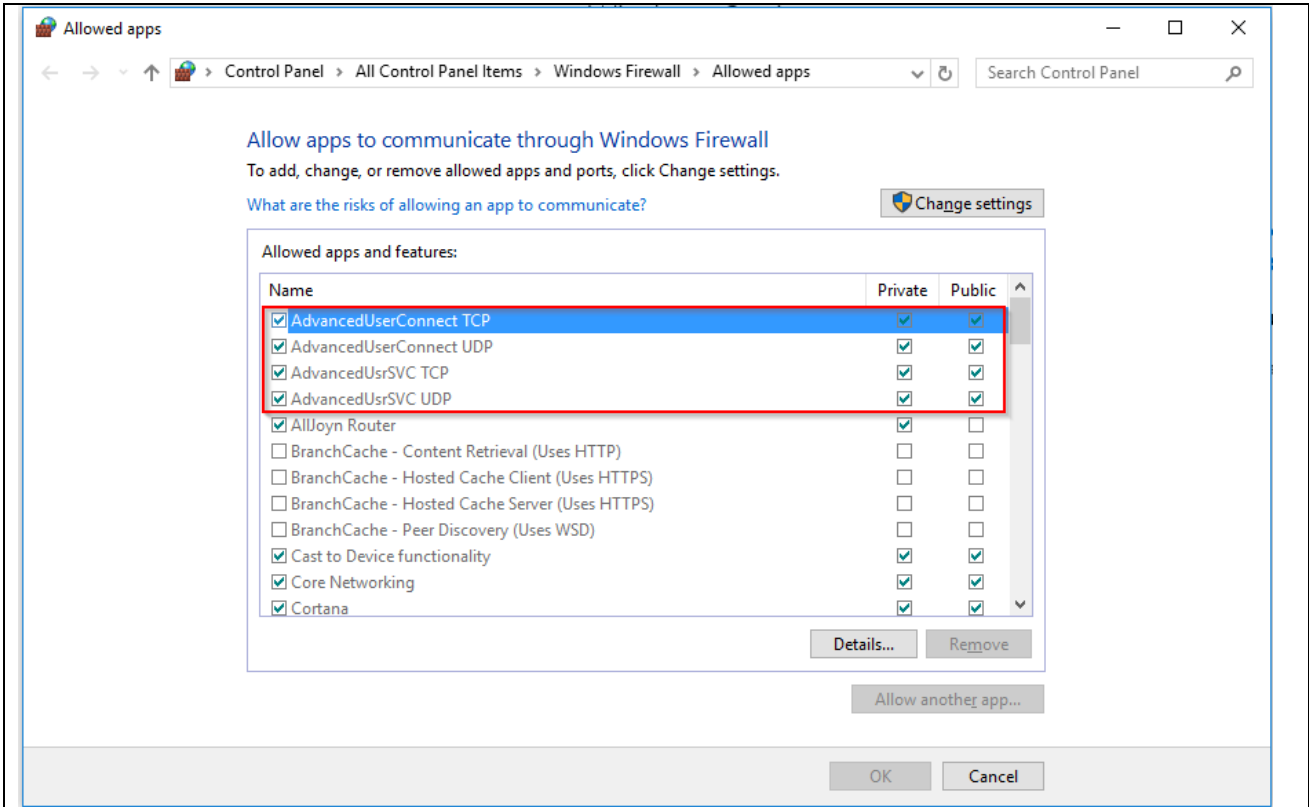
These settings will be creating automatically at the installation routine.

The Software uses the Port TCP 34434 as default for the Communication to the SmartDac device. For the Web Interface the Port 80 is in use.

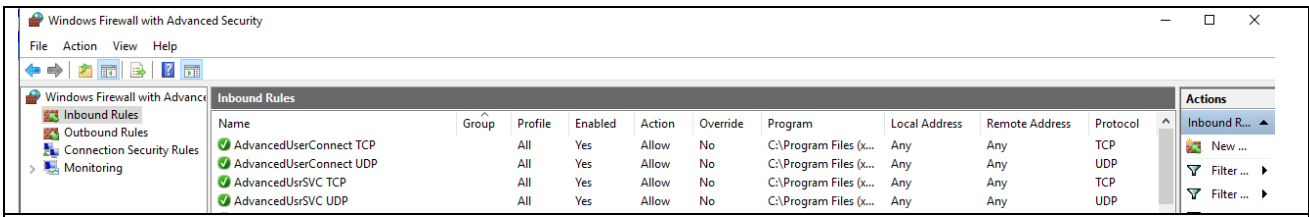
Within the Setup routine the Software will be apply into the Windows Firewall.

8.1 Windows 10

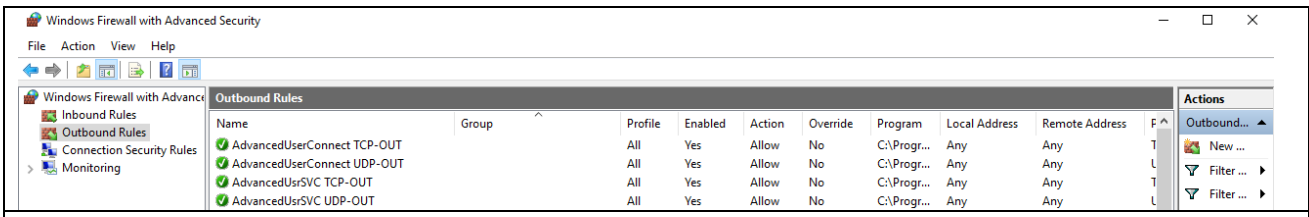




Check Settings



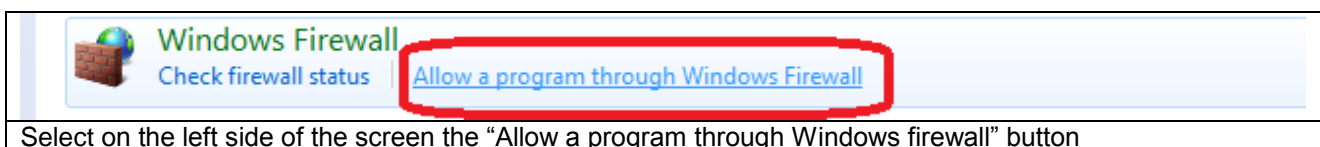
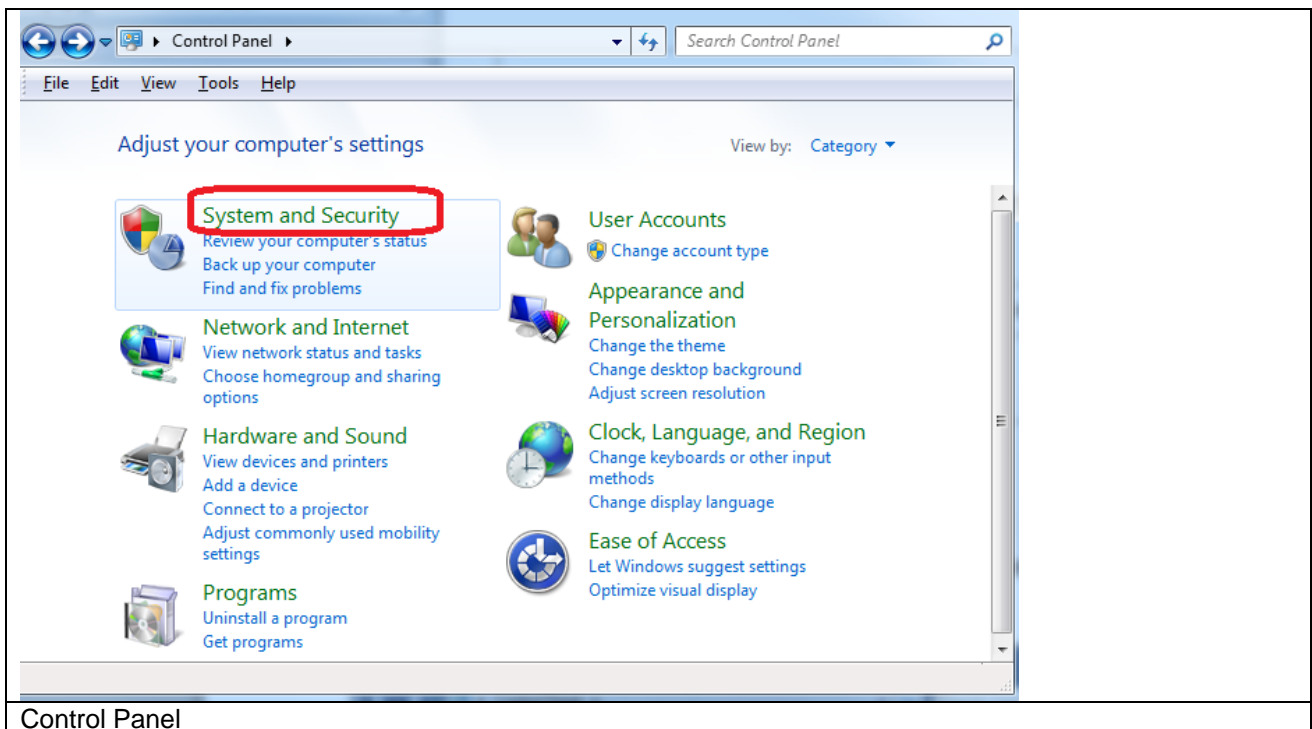
Inbound Rules

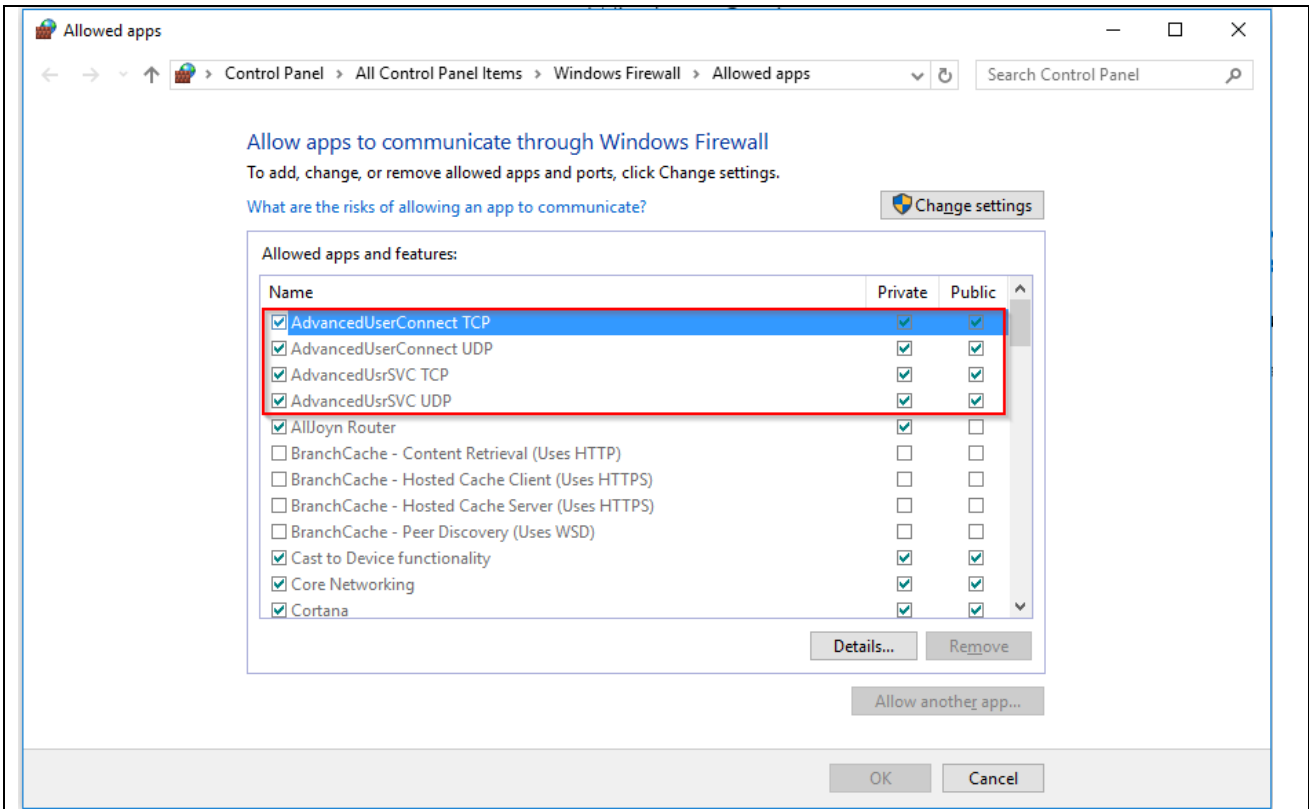


Outbound Rules

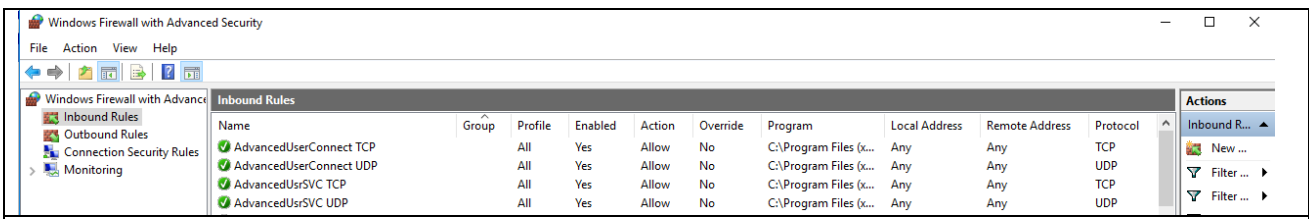
8.2 Windows 7

- Open the Windows control panel via START > SETTINGS > CONTROL PANEL
- Select **System and Security**

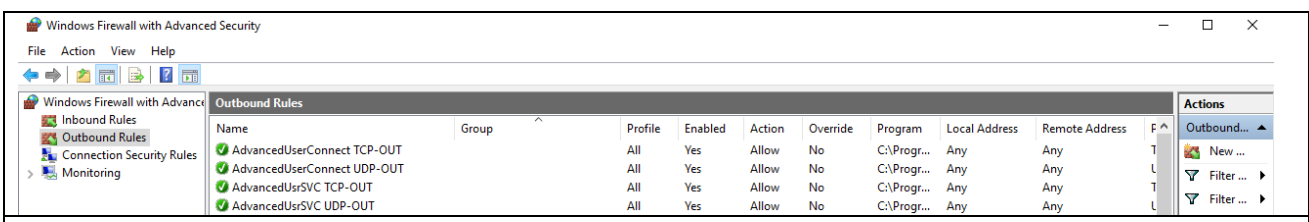




Firewall Settings



Inbound Rules



Outbound Rules

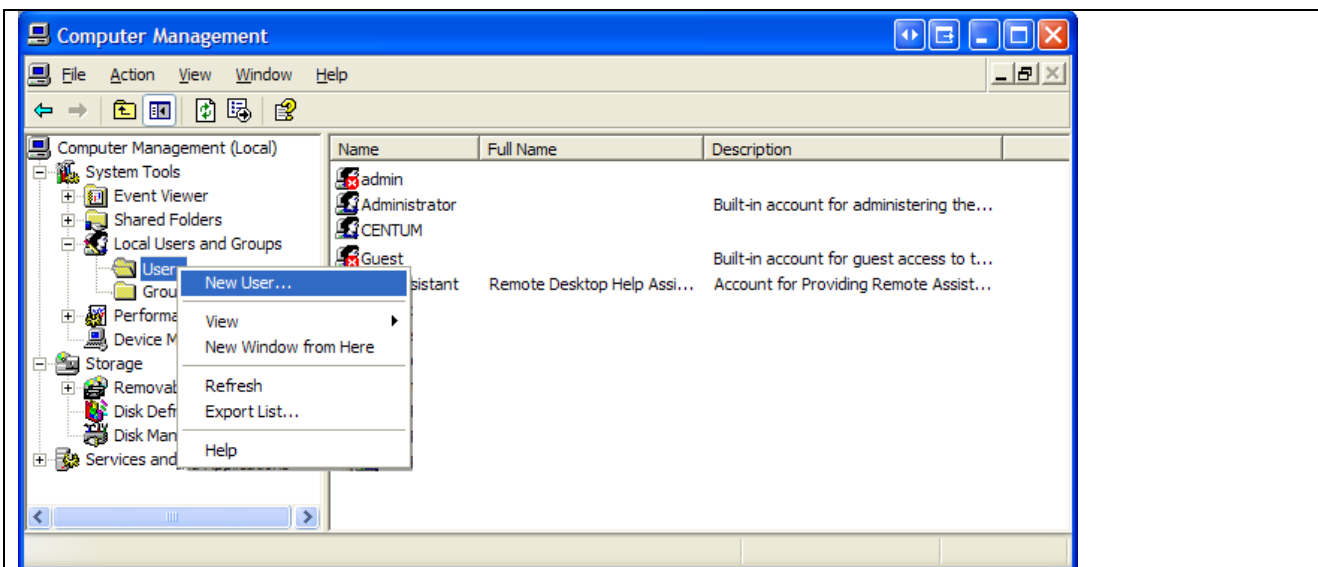
9. Run Program as NT- Service

It is possible to start the program as a service. With this it is not necessary to login on the computer. It starts automatically with Windows.

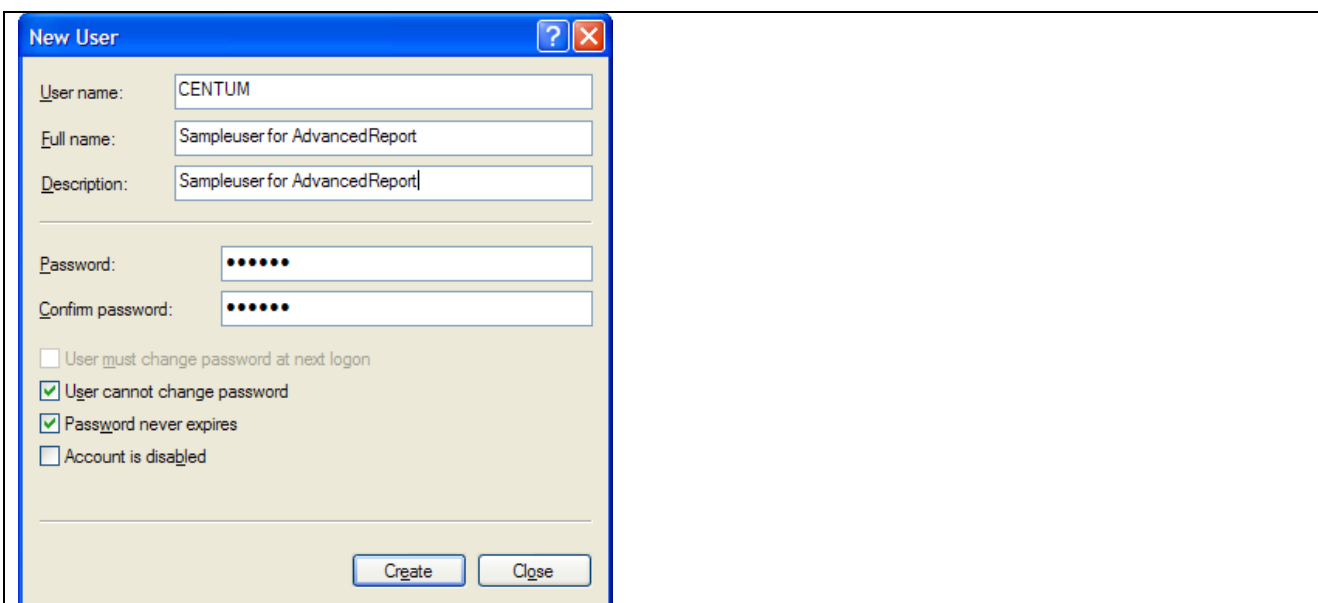
9.1 Installation as local User

9.1.1 create a new lokal user:

control panel → Adminstrative tools → Computer Management
Local user and groups → user

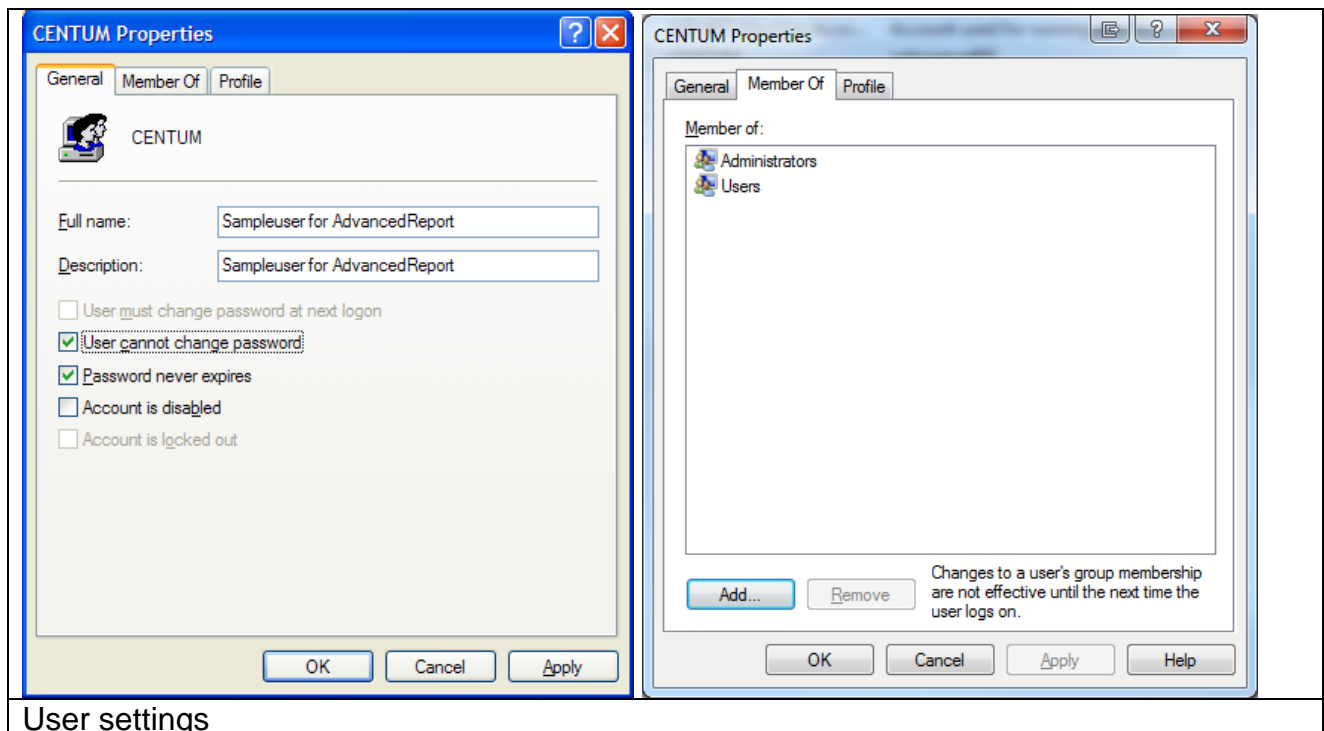


Computer Management



Create a new user

You have to set a password!



The service will be restart after an Error Counter of 10. For this function it is important to start the service as an user with administrative rights.

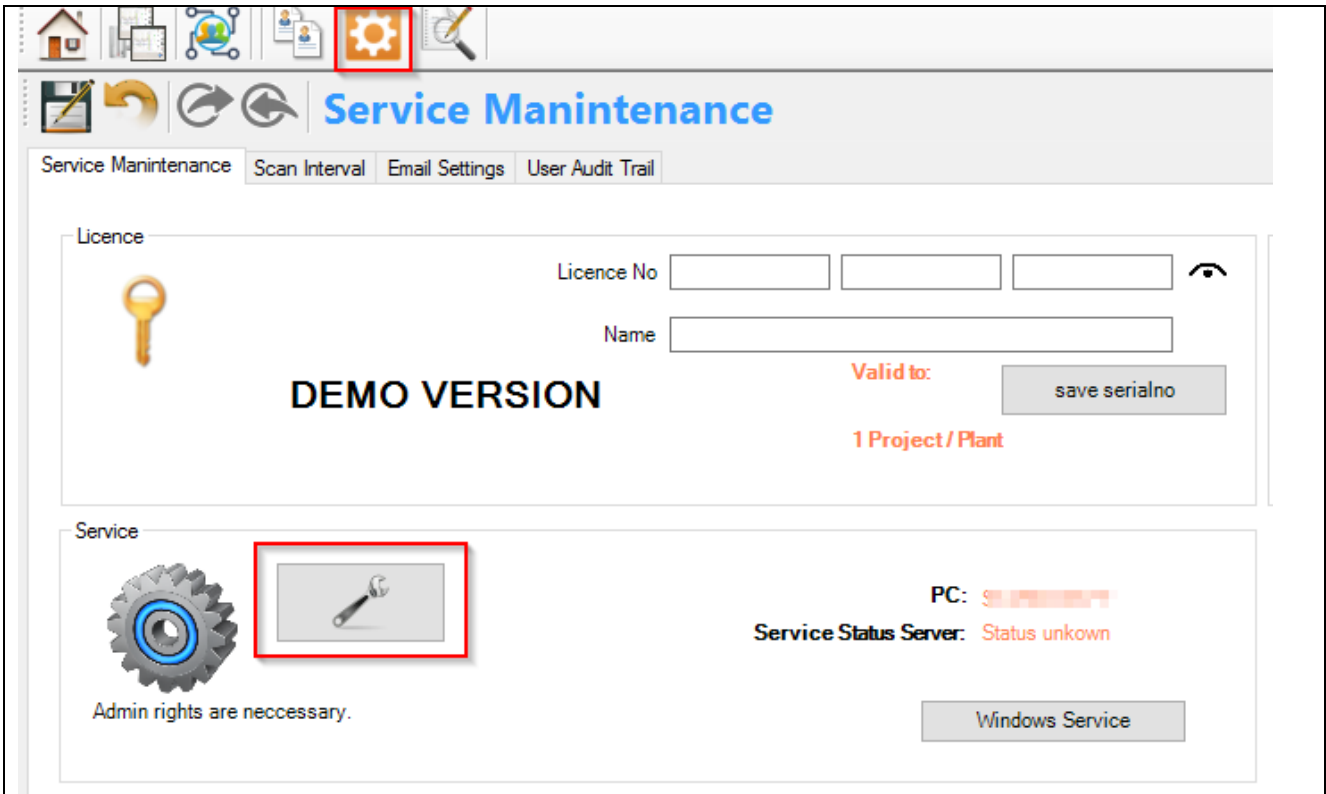


ATTESION IMPOTANT:
It is important to start the service as a user with administrative rights.

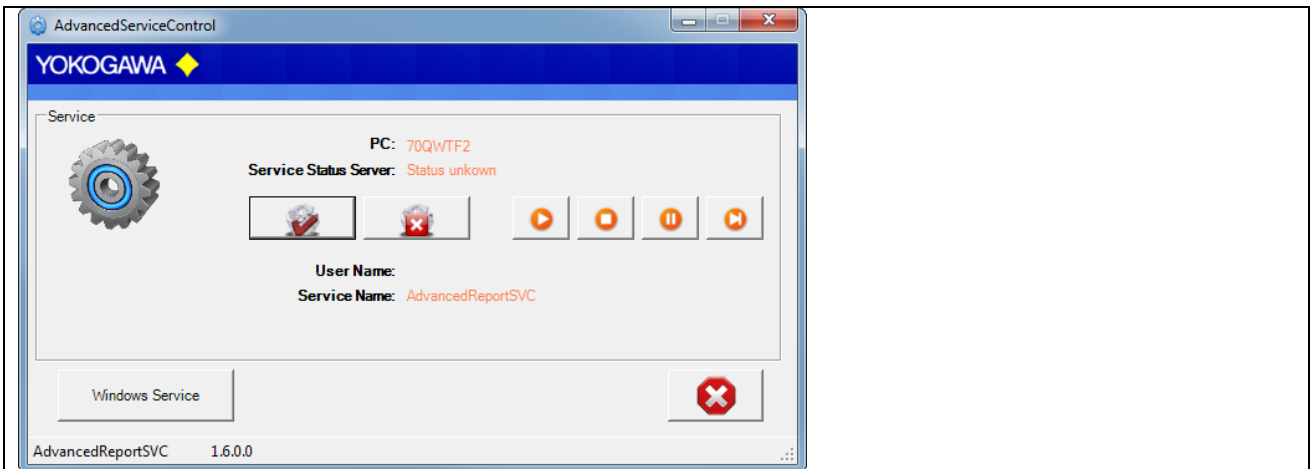
9.2 Installation as User

Change to the Settings register. The Button „Install“ add the service „AdvancedUsrSVC“ into the control panel. The Button „Start“ activate the Service. The service start as „System“ User in Automatic Mode.

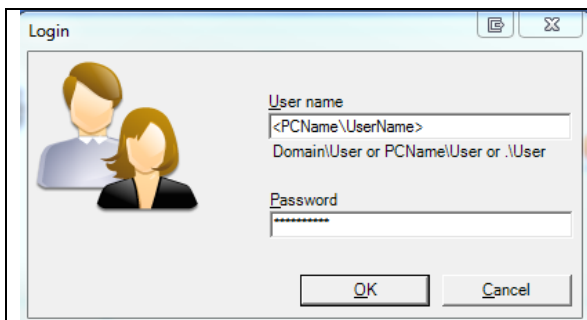
By changing the settings, it will be activate with a new folder scan.



Application Settings

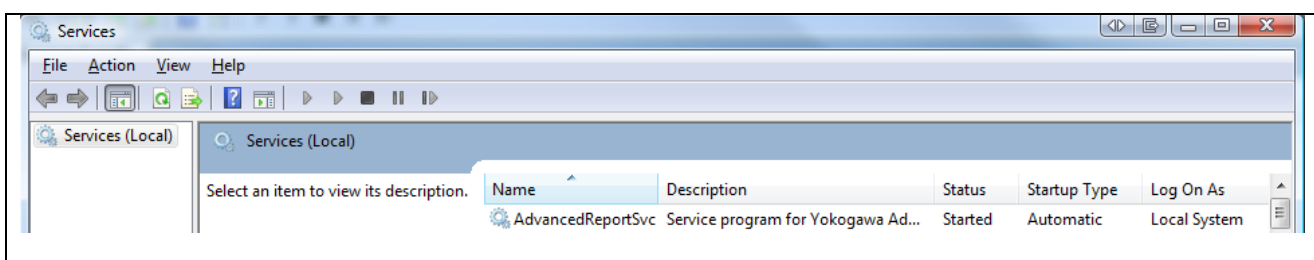


Service Settings as separate Application



Install the Service as User

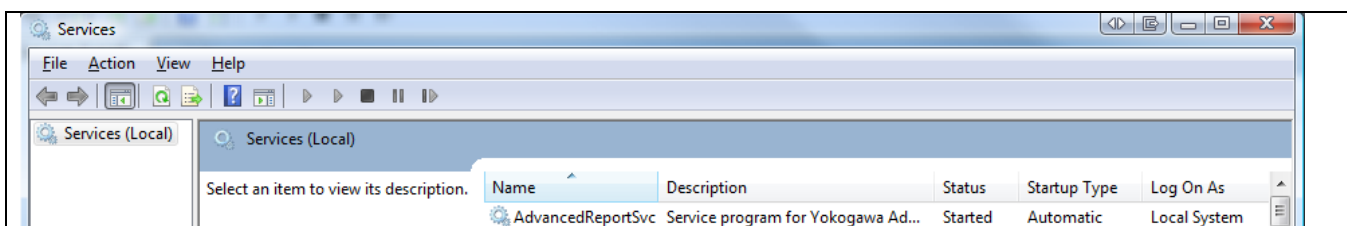
The messages are sending to the Windows event logger (Control Panel → Administrative Tools → Events).



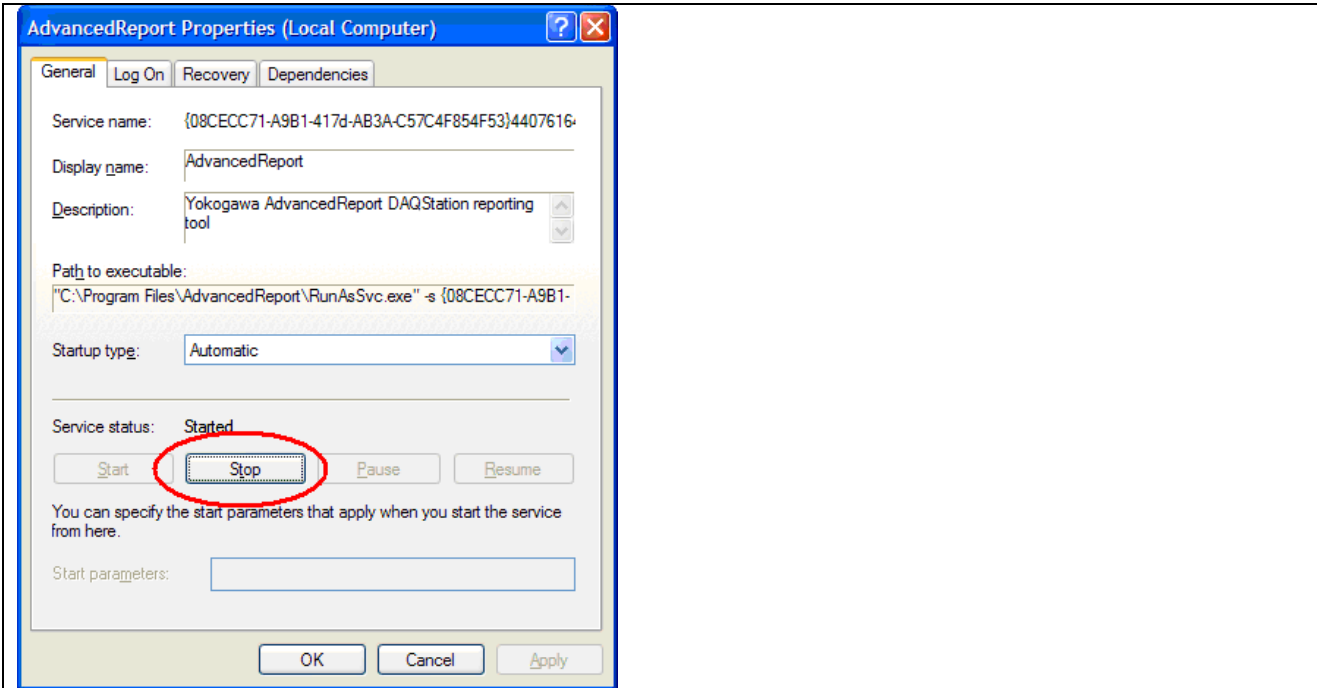
Windows Services

9.3 Change the settings for the service:

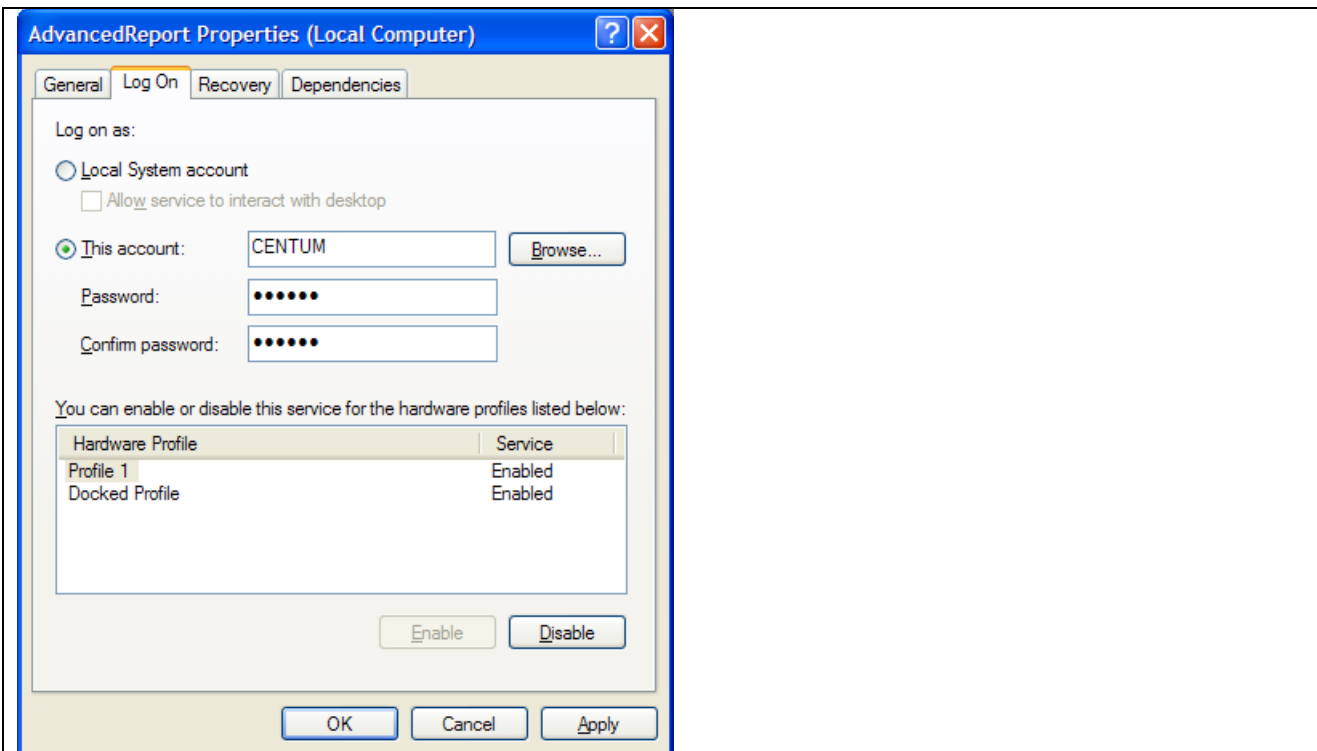
Control Panel → Administrative tools → Services



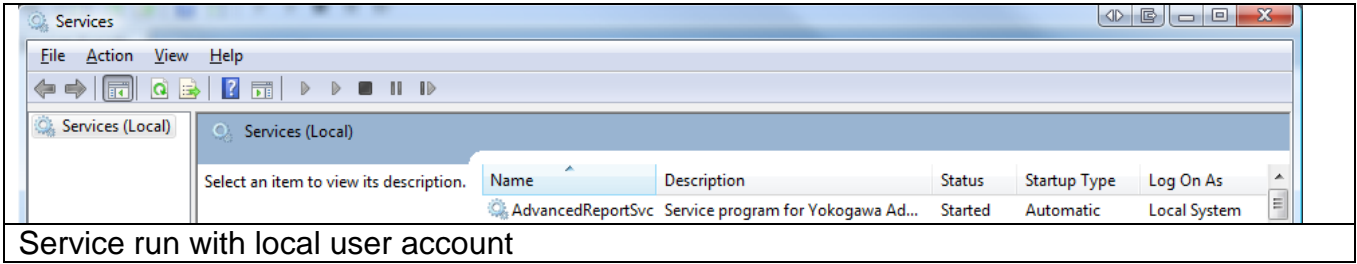
Service run with local system account



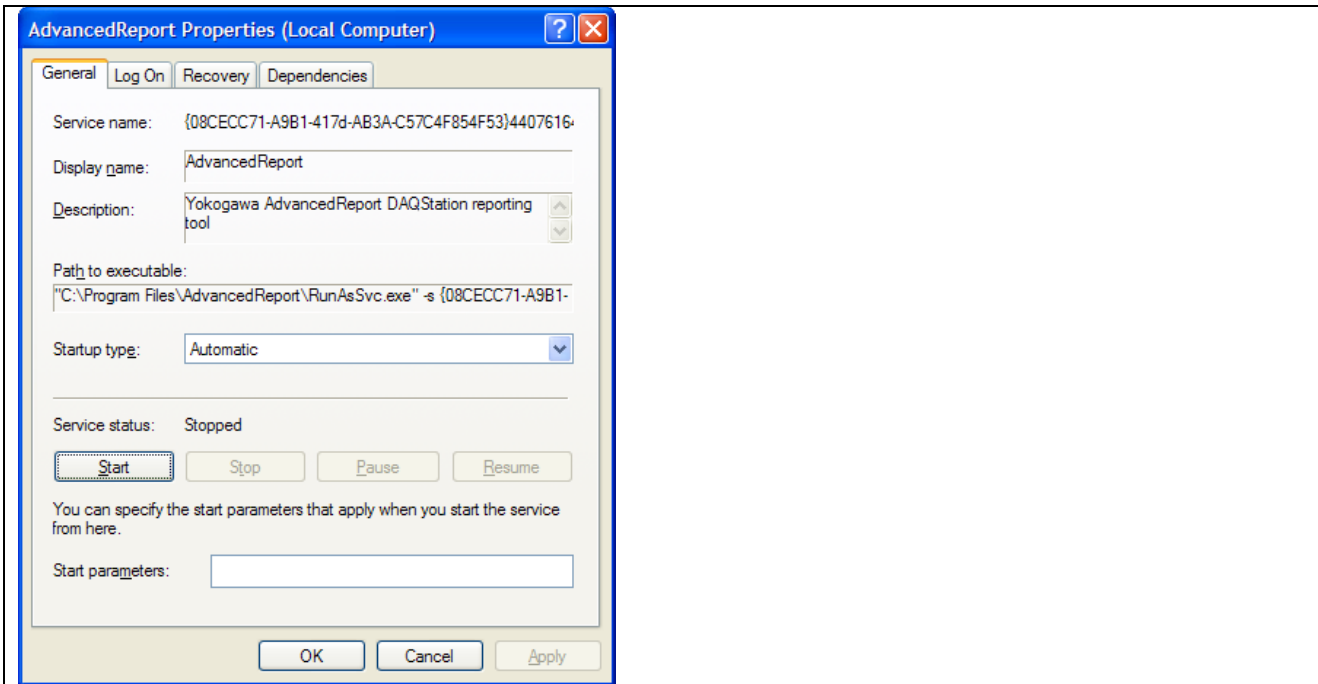
Stop the service



Change from System-account to local user account
In this example we use the local user "CENTUM"



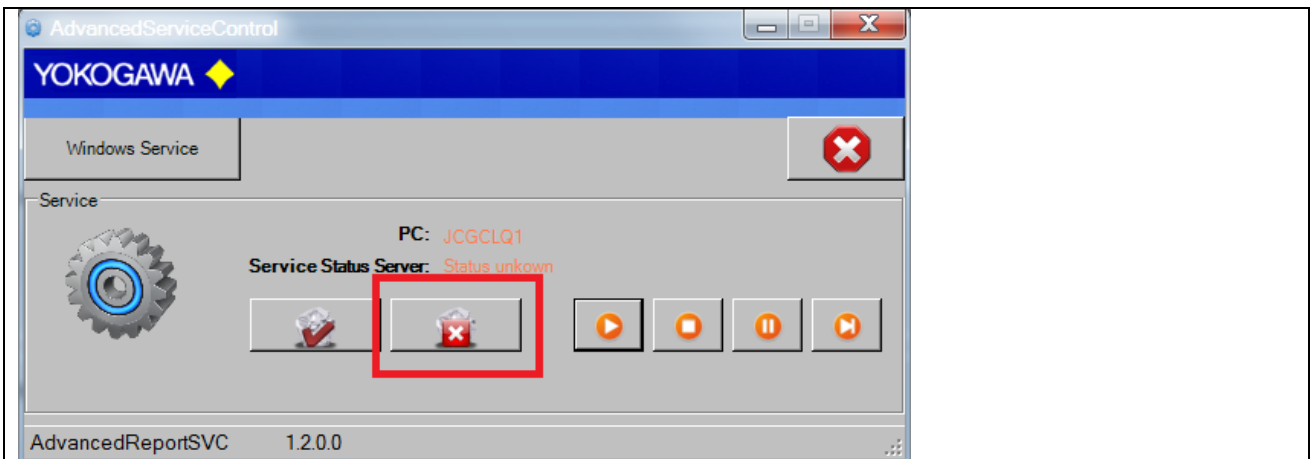
Service run with local user account



Restart the service

9.4 De-Installation Service

Change to the Settings register. The Button „Stop“ stopped the service. After stopping the service it is possible to deinstall the servie by using the button „Un-Install“.



Stopp and Deinstall

10. De-installation Program

The de-installation can be done by the uninstall-routine of Windows. To be found under Start → Settings → Control panel → Software.

11. Additional Options

The program AdvancedUserConnect does not need an entry in the registry of Windows. All settings are stored into the configuration file. Only the function „Start with Windows“ will be defined an entry into the registry when this is activated. The DLL-files do not need a registration.

12. More Solutions

Check our Website for more solution:

<https://www.AdvancedTools.de>

<http://www.SmartDACplus.com>

Also available are the following software products:

- **AdvancedSQL**
 - The program AdvancedSQL inserts automatically data from the Yokogawa paperless recorders into a database.

- **AdvancedReport**
 - Create Reports automatically
 - Create Excel Reports
 - Export Data into a textbase file format like CSV.
 - Analyze your data automatically

 - TUSReport - NADCAP AdvancedReport Addin
 - The program serves automatic converting of the data files and the event files of the Yokogawa recorder from the DX, DXP, FX and DXAdvanced family into the NADCAP Report format.