



AdvancedSmartMove

YOKOGAWA Deutschland GmbH
Broichhofstraße 7-11
Germany 40880 Ratingen
Tel. +49 - 2102 - 4983 - 0

INDEX:

1.	Introduction.....	3
2.	Revision	3
3.	System Requirements.....	4
3.1	Hardware	4
3.2	Software.....	5
3.3	Prerequisite	5
3.4	Operating System	5
4.	Download	6
5.	Software Function	6
6.	AdvancedSmartMove: Start the program	7
7.	Configuration of the detecting path	8
7.1	Button	8
7.1.1	Add/Delete Button	8
7.1.2	Button Save/Undo	8
7.1.3	Print / Print Preview Project configuration	9
7.2	Project Active Checkbox.....	9
7.3	Folder.....	10
7.4	Source file handling modes	10
7.5	Attitudes automatic conversion	11
8.	Attitudes manual detecting.....	13
9.	Log file.....	14
10.	Starting parameter	16
11.	Program Settings	17
11.1	License.....	17
11.1.1	Serial number	17
11.1.2	Name	17
11.2	Language change-over.....	18
11.2.1	New language file provide	18
11.3	Program protection	18
11.4	Service settings	18
11.5	Logging /Backup and Restore Settings.....	20
12.	Run Program as NT- Service	21
12.1	Installation	21
12.1	Deinstallation.....	22
13.	Error handling	22
13.1	Solve Problem by yourself.....	22
13.2	Software AdvancedSmartMove.....	23
14.	Appendix.....	24
14.1	Reporting Deactivation and activation	24

1. Introduction

The program AdvancedSmartMove performs automatic transfer, rename, or delete files are not reachable of the data files and the event files of the Yokogawa recorder from the DX, DXP, FX, DXAdvanced, MV1000 and SmartDAC+ family.

A condition for these functions is the presence of the data files, display data files and/or display event files in a folder on the Windows PC. Using the ftp client function of the Yokogawa recorders, it is possible to store the files on the PC. For further information please read operating instructions of the recorder.

For updates and changes about the program, please read the info file stored in the installation folder or contact your Yokogawa sales team.



Note:

Please read this manual to find solutions!

2. Revision

Date	Version	Reason
08.2021	1	First creating

3. System Requirements

3.1 Hardware

For the documentation of the test, a paperless Data recorder is required. The Data recorders listed below are supported by the Add in:

Recorder	File extension	Data type
GX20 / GP20 / GM10 GX10 / GP10 www.smartdac.com [with /AS Pharma Option]	.GDS .GEV .GSE .GSD [/AS1 Pharma Option]	Display Data Event Data Display Data Event Data [with /AS1 Pharma Option]
DX1000 / DX1000N / DX2000 [DXAdvanced] www.DAQStation.com	.DAD .DAE	Display Data Event Data
DX1000 / DX2000 [with /AS1 Pharma Option]	.DSD .DSE	Display Data Event Data
DX100 / DX200	.DDS .DEV	Display Data Event Data
FX1000	.DAD .DAE	Display Data Event Data
MV1000 / MV2000 [MVAdvanced]	.DAD .DAE	Display Data Event Data
FX100	.DDS .DEV	Display Data Event Data
DX100P / DX200P Pharma-Ausführung	.DBD .DBE	Display Data Event Data
MW100 / MX100	.MXD	Data
DL850	.WDF	Data files

For the analysis using a PC, the following minimum hardware requirements must be met.

- Hard disk capacity: 30 MB
- Memory: 4GB

3.2 Software

The program AdvancedSmartMove is Windows based and requires therefore a Windows Operating System.

3.3 Prerequisite

- Windows .Net Framework 4 Full installation (is checked by setup)
 - <http://www.microsoft.com/en-us/download/details.aspx?id=17718>

3.4 Operating System

The program has been tested on the following platforms¹:

- Windows 10 [32bit]
- Windows 10 [64bit]
- Windows Server 2012R2
- Windows Server 2016

¹ Microsoft Windows are a registered trademarks or trademarks of Microsoft Corporation in the United States and/or other countries

4. Download

Load the latest version of our solution from the following web Page:

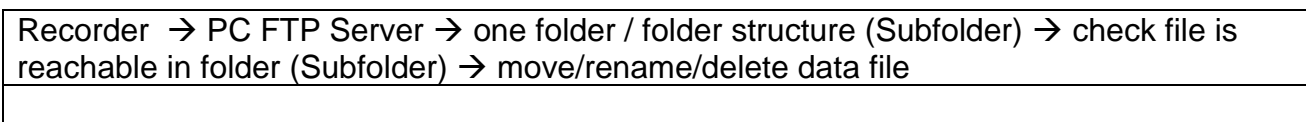
<https://www.AdvancedTools.de>

Check there for “AdvancedSmartMove”.

5. Software Function

The software will be automatic transfer, rename, or delete files are not reachable of the data files and the event files.

Check the following diagram to find out the function of the software.



6. AdvancedSmartMove: Start the program

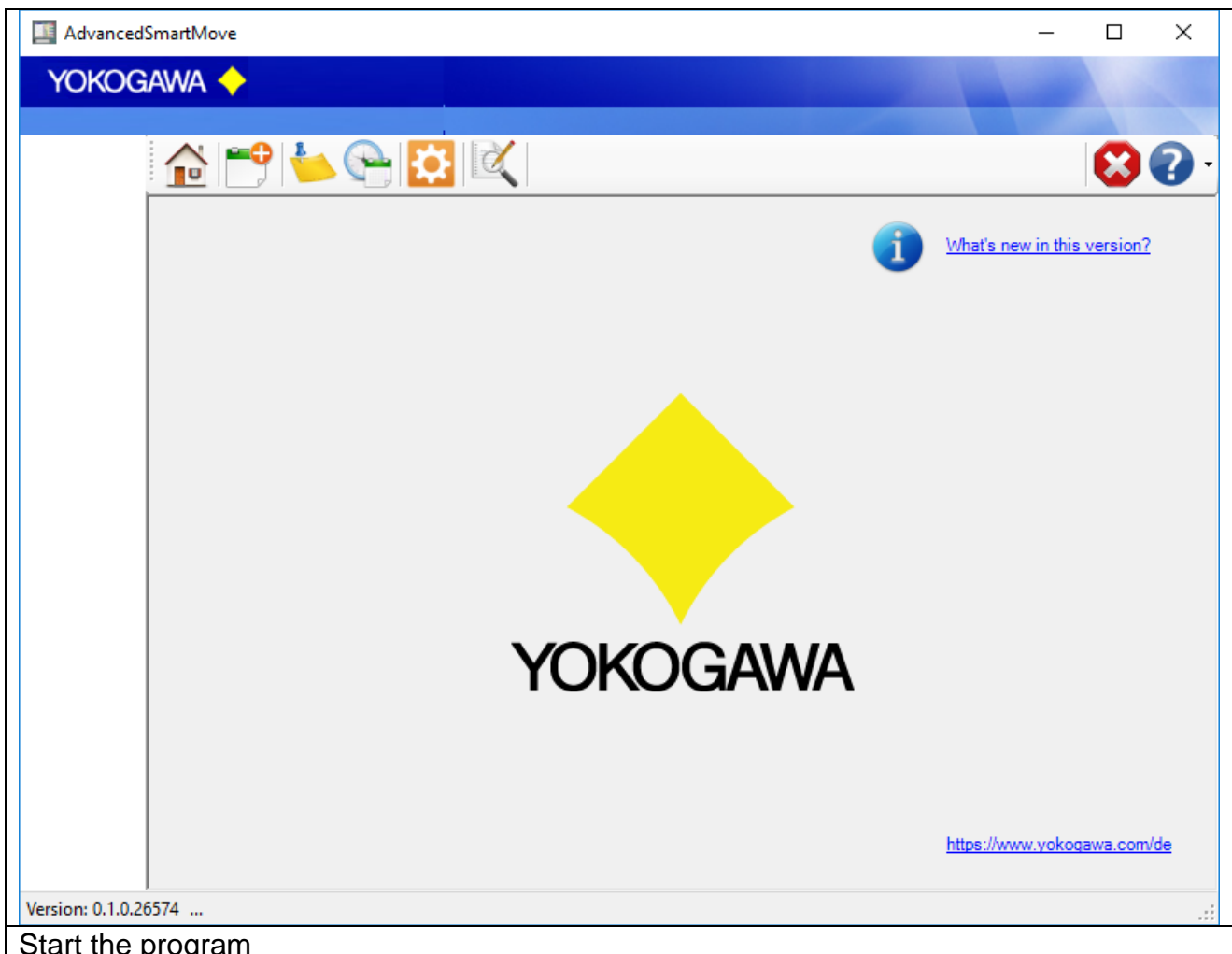


The program starts in the illustration that follows.

The window consists of two parts. The left part consists of the navigation bar with the menu options:

- Home/Main
- Configuration of the detection path
- Manual check
- Automatic detecting
- Program settings
- Event Report and Error Handling
- Close Program
- Information

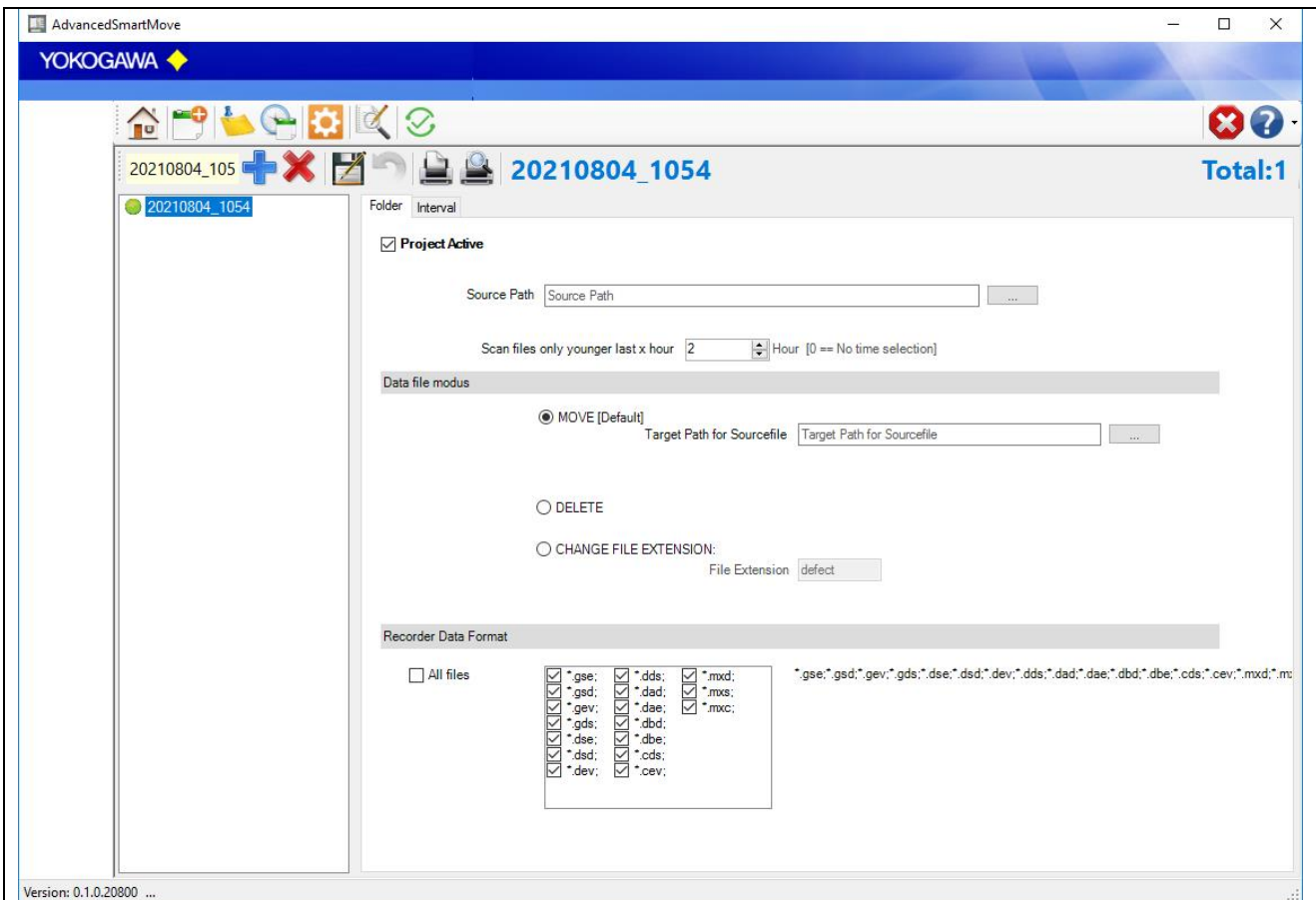
The appropriate dialogues are indicated in the right part. The explanations to the individual adjustment possibilities are specified on the following pages.



7. Configuration of the detecting path



On the register sheet “program settings” the following settings are made:



Project settings

7.1 Button

7.1.1 Add/Delete Button



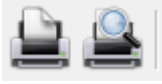
With this Version it is possible to add more than one project. With this Button it can be add or delete the project. More than one project is only available with the Multi Batch Option.

7.1.2 Button Save/Undo

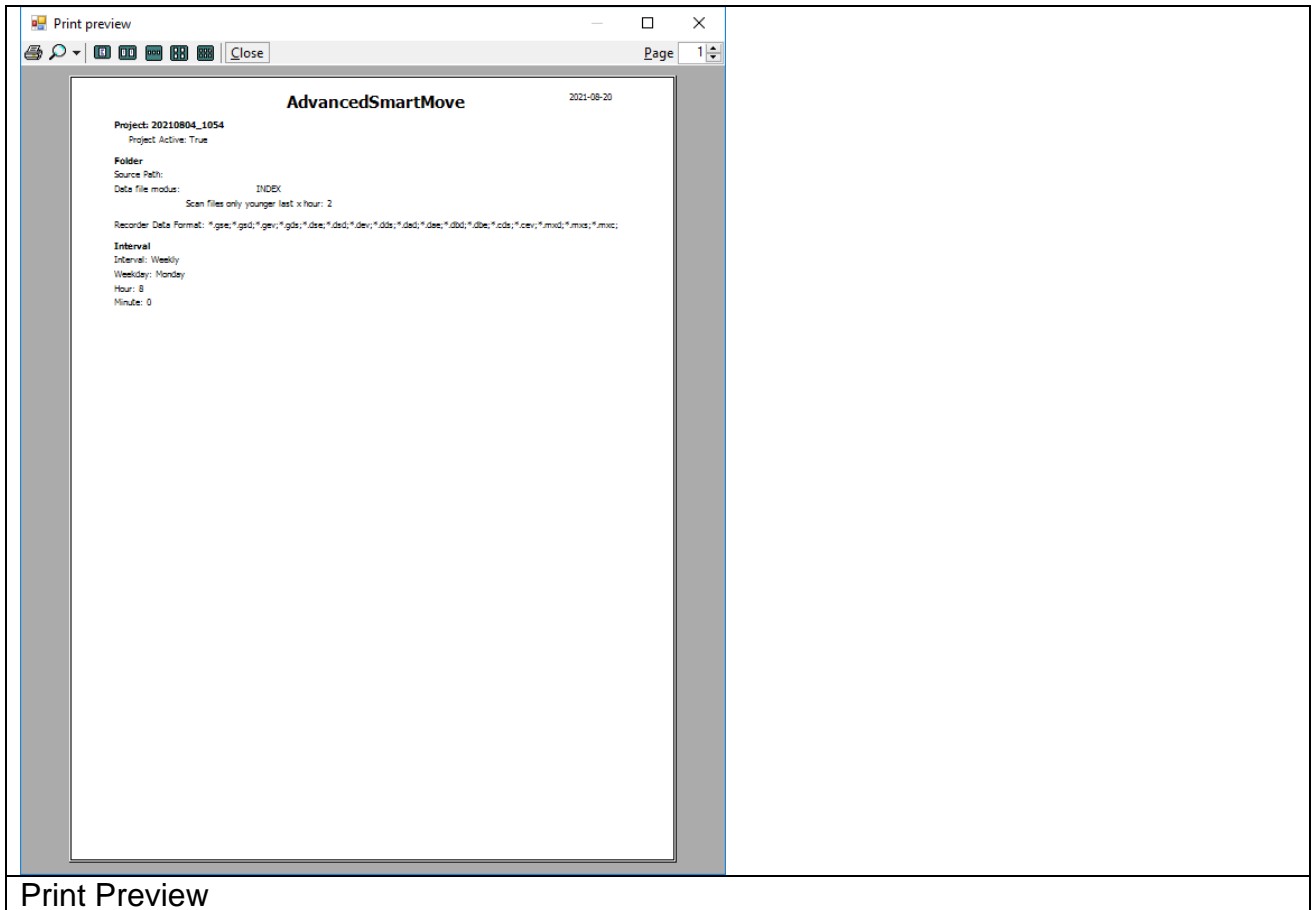


After all changes at the configuration the attitudes over the Button “save” in the file *.ini must be deposited. With the Button “undo” can be indicated the last stored attitudes again.

7.1.3 Print / Print Preview Project configuration



Print the configuration on one sheet.



7.2 Project Active Checkbox

To activate or deactivate a Project, check or uncheck this checkbox. An active Project will be marked with a Green Dot at the Project list.

	<input checked="" type="checkbox"/> Project Active	Active Project
	<input type="checkbox"/> Project Active	Deactivate Project
		Selected Project

If a project deactivates, the auto scan routine will be ignoring this project. Only a manual conversion is possible.

7.3 Folder

The “source folder” defines the place on the hard disk, where the recorder files are stored. The “target folder original files” marks the place, in which the original binary source files are stored. Additionally, the “target folder” and the “target folder original files” can be the same.

All subfolders in the “source folder” are scanned. If appropriate files in a subfolder are found, all the files are detecting into the same target folder structure.

The listings can be found easily in the computer by hitting the button right beside the input field.

The file name can be individually arranged by joining the individual elements. Also, firm indication can be inserted. Please you pay attention to use only windows conformer indications for the name designation.



NOTE:

The “source folder” and “target folder original files” may not be identical!

7.4 Source file handling modes

It is possible to go around the entire conversion and only shift the data files. During the shift renaming of the files is likewise possible.

It is possible to set a handling mode for the source files.
There are three possible modes:

1. Move source file: This mode moves the reported source file into the target folder for binary files.
2. Delete source file: This mode deletes the source file after the report file is created. The file is not deleted into the Recycle Bin!!!
3. Change file extension: The damaged file got the new defined file extension. The file is not moved into another folder.
e.G.: `F00007_151002_120428.GDS` → `F00007_151002_120428.GDS.defect`

7.5 Attitudes automatic conversion

On the register sheet the attitudes for the temporal interval of the conversion program will convert automatic transacted. At the selected time all data files in the listing are converted. The appropriate original files are likewise shifted into the goal listing.

Note:

1. If a new file should have been provided into the source listing in the time of the conversion, this is converted automatically in the next interval.
 2. Defective files are not converted. The export file is provided and contains a reference.
-

The following time intervals are supported:

1. Weekly

Further attitudes necessarily:

- Day
- Hour
- Minute

2. Daily

Further attitudes necessarily:

- Hour
- Minute

3. Once per hour

Further attitudes necessarily:

- Minute

4. Interval

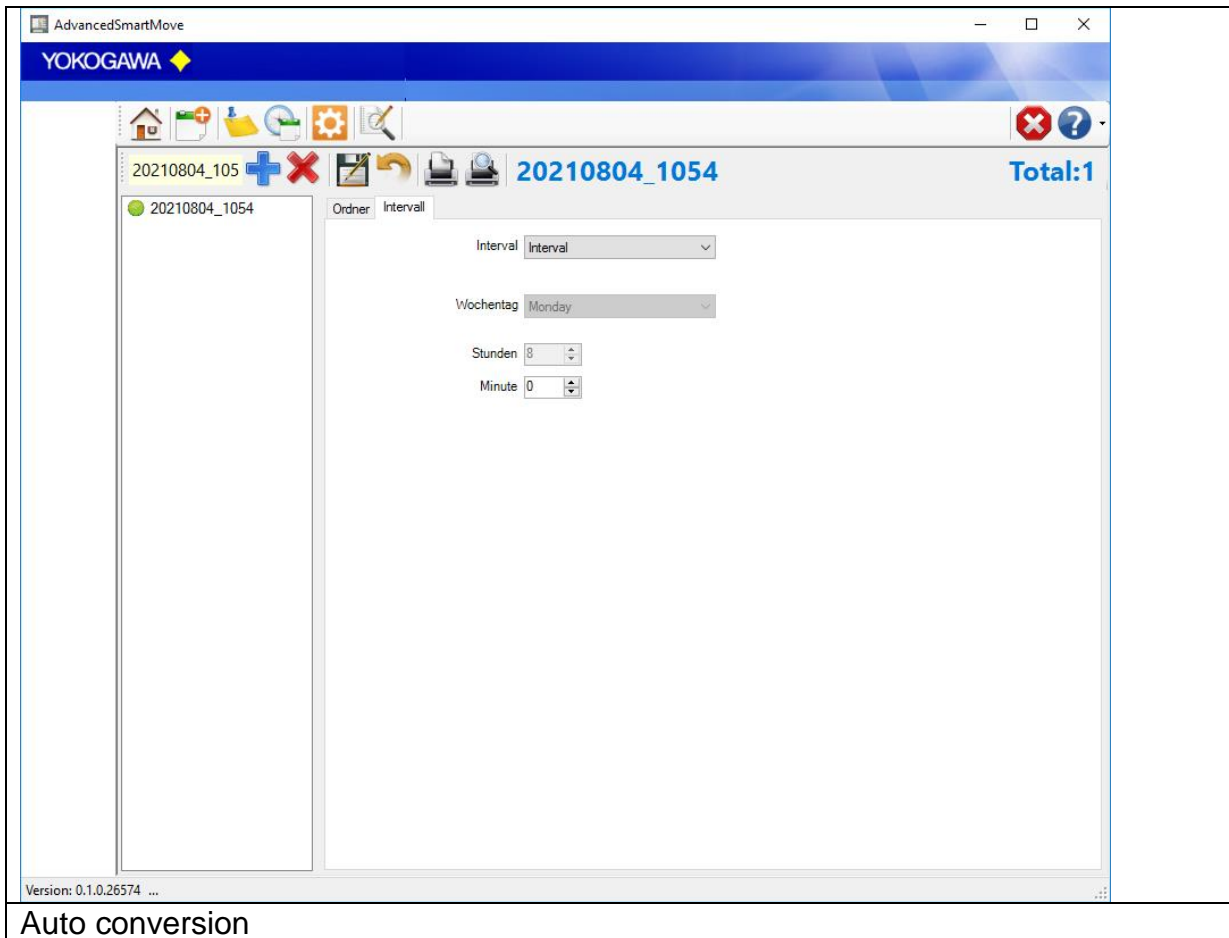
Further attitudes necessarily:

- Minute

Additionally, the file extension of the data files must be stopped. Display data files can automatically be converted, display Event file or also both types.

With the Button starting is activated automatic converting.

A defective or manipulated file is recognized, with the export file with a reference is provided. Over the manual conversion, it is possible to try the receive data.



Auto conversion

If the program is running as a service, it is not possible to start the program again. Save the settings, push the save Button. After stopping and restarting the software, the settings are available.

8. Attitudes manual detecting



Over register sheet “manual detecting” individual projects with the selected format can be selected.

Datei auswählen

File Type: Event File
Device Type: GM10
Serial No: [REDACTED]
File Message:
Meas. Ch. Count: 34
Math. Ch. Count: 0
Ext. Ch. Count: 12
Data Count: 11637
Start Time: 04.06.2020 08:33:00.000
End Time: 08.06.2020 09:31:00.000
Start Serial: 5547
End Serial: 17183
Time Zone: -60
Day Light active: 1
Log Digit: 2
Alarm Num.: 0
Event Num.: 0
Operation Log: 0
Image Num.: 0
Sampling Int.: 30,000
Time Correct.: 0
Trigger Time: 08.06.2020 09:31:00.000
Trigger No: 11636
Started by: [COMMUNICATION]
Stopped by: [COMMUNICATION]
Starting Cond.: Manual
Dividing Cond.: Manual
Process Type: NONE
Calibration Mode: OFF
Group Name: GROUP 1 [50] GROUP 2 [5]

D:\NETSOL_SOURCE\...000007_200604_083300.GEV

Start

D:\NETSOL_SOURCE\GAMKO_20200605_1530\000007_200604_083300.GEV
D:\NETSOL_SOURCE\GAMKO_20200605_1530\000007_200604_083300.GEV

START 06.07.2020 14:59:06
> D:\NETSOL_SOURCE\...000007_200604_083300.GEV
END Time needed: 332 sec
START 06.07.2020 15:05:02
> D:\NETSOL_SOURCE\...000007_200604_083300.GEV
>> Start conversion...
>>> Datei Name D:\NETSOL_TARGET\GAMKO_20200605_1530\000007_200604_083300.GEV
>>> Add header data...
>>> Add channel header ...
>>> Add Date/Time data...
>>> Add total Channel count 46...
>>> Add Measurement Channel count: 0 of [46]...
>>> Add Measurement Channel count: 15 of [46]...
>>> Add Measurement Channel count: 30 of [46]...
>>> Add Measurement Channel count: 45 of [46]...
>>> Add Measurement Channel count: 46 of [46]...
>>> Start Makro: AdvancedReport...
>>> Protect the Sheet...
END Time needed: 171 sec

Detail Info

Manual conversion

Use the Button “open” to select one or more files.
check the file with the “Checking” button.

Notes:

Manual converting requires an existing target folder!
Add the data files per Drag & Drop from the Windows Explorer into the file field.

If the Option **Detail Info** is checked, there are more information about the actual conversion status is shown. Take care, it is an option, because it needs more time to create a report. The total conversion time will be shown after creating the report.

YOKOGAWA Co-innovating tomorrow™

13/24

9. Log file

Every file change within the software will be recognizing into the monthly Log file. There will be find the following messages are done by the Software.

- Date and Time
- Project
- Original file name
- File operation (RENAME;DELETE;MOVE)
- New file name

202108_SmartMoveLog						
Date	Category	Project	Original File	Result	Message	
1	8/22/2021 5:44:43 PM	RENAME	20210804_1054	..000114_H298_200706_230218.DSE	C:\NETSQL_Target\defect\000114_H298_200706_230218.DSE.DEFECT	
2	8/22/2021 5:44:29 PM	RENAME	20210804_1054	..000114_H298_200706_230218.DSE	C:\NETSQL_Target\defect\000114_H298_200706_230218.DSE.DEFECT	
3	8/22/2021 5:42:11 PM	RENAME	20210804_1054	..000114_H298_200706_230218.DSE	C:\NETSQL_Target\defect\000114_H298_200706_230218.DSE.DEFECT	
4	8/22/2021 5:41:57 PM	RENAME	20210804_1054	..000114_H298_200706_230218.DSE	C:\NETSQL_Target\defect\000114_H298_200706_230218.DSE.DEFECT	
5	8/22/2021 5:40:49 PM	RENAME	20210804_1054	..000114_H298_200706_230218.DSE	C:\NETSQL_Target\defect\000114_H298_200706_230218.DSE.DEFECT	
6	8/22/2021 5:24:04 PM	RENAME	20210804_1054	..000282_H187_180124_132739.dae	C:\NETSQL_Target\defect\000282_H187_180124_132739.dae.DEFECT	
7	8/22/2021 5:24:00 PM	RENAME	20210804_1054	..000143_H368_210323_181316 (2).DSE	C:\NETSQL_Target\defect\000143_H368_210323_181316 (2).DSE.DEFECT	
8	8/22/2021 5:23:56 PM	RENAME	20210804_1054	..000114_H298_200706_230218.DSE	C:\NETSQL_Target\defect\000114_H298_200706_230218.DSE.DEFECT	
9	8/22/2021 5:20:12 PM	RENAME	20210804_1054	..000282_H187_180124_132739.dae	C:\NETSQL_Target\defect\000282_H187_180124_132739.dae.DEFECT	
10	8/22/2021 5:20:08 PM	RENAME	20210804_1054	..000143_H368_210323_181316 (2).DSE	C:\NETSQL_Target\defect\000143_H368_210323_181316 (2).DSE.DEFECT	
11	8/22/2021 5:20:04 PM	RENAME	20210804_1054	..000114_H298_200706_230218.DSE	C:\NETSQL_Target\defect\000114_H298_200706_230218.DSE.DEFECT	
12	8/22/2021 4:54:06 PM	RENAME	20210804_1054	..000114_H298_200706_230218.DSE	C:\NETSQL_Target\defect\000114_H298_200706_230218.DSE.DEFECT	
13	8/22/2021 4:53:52 PM	RENAME	20210804_1054	..000114_H298_200706_230218.DSE	C:\NETSQL_Target\defect\000114_H298_200706_230218.DSE.DEFECT	
14	8/22/2021 4:15:59 PM	RENAME	20210804_1054	..000143_H368_210323_181316 (2).DSE	C:\NETSQL_Target\defect\000143_H368_210323_181316 (2).DSE.DEFECT	
15	8/22/2021 4:15:54 PM	RENAME	20210804_1054	..000114_H298_200706_230218.DSE	C:\NETSQL_Target\defect\000114_H298_200706_230218.DSE.DEFECT	
16	8/22/2021 3:53:24 PM	RENAME	20210804_1054	..000148_H311_210220_173610.DSE	C:\NETSQL_Target\defect\000148_H311_210220_173610.DSE.DEFECT	
17	8/22/2021 3:53:20 PM	RENAME	20210804_1054	..000143_H368_210323_181316 (2).DSE	C:\NETSQL_Target\defect\000143_H368_210323_181316 (2).DSE.DEFECT	
18	8/22/2021 3:53:01 PM	RENAME	20210804_1054	..000114_H298_200706_230218.DSE	C:\NETSQL_Target\defect\000114_H298_200706_230218.DSE.DEFECT	
19	8/22/2021 3:49:29 PM	RENAME	20210804_1054	..000114_H298_200706_230218.DSE	C:\NETSQL_Target\defect\000114_H298_200706_230218.DSE.DEFECT	
20	8/22/2021 3:42:42 PM	RENAME	20210804_1054	..000282_H187_180124_132739.dae	C:\NETSQL_Target\defect\000282_H187_180124_132739.dae.DEFECT	
21	8/22/2021 3:42:38 PM	RENAME	20210804_1054	..000193_H339_210611_043248.DSE	C:\NETSQL_Target\defect\000193_H339_210611_043248.DSE.DEFECT	
22	8/22/2021 3:42:34 PM	RENAME	20210804_1054	..000148_H311_210220_173610.DSE	C:\NETSQL_Target\defect\000148_H311_210220_173610.DSE.DEFECT	
23	8/22/2021 3:42:12 PM	RENAME	20210804_1054	..000143_H368_210323_181316 (2).DSE	C:\NETSQL_Target\defect\000143_H368_210323_181316 (2).DSE.DEFECT	
24	8/22/2021 3:42:07 PM	RENAME	20210804_1054	..000114_H298_200706_230218.DSE	C:\NETSQL_Target\defect\000114_H298_200706_230218.DSE.DEFECT	
25	2021-08-22 15:31:45	RENAME	20210804_1054	..000282_H187_180124_132739.dae	C:\NETSQL_Target\defect\000282_H187_180124_132739.dae.DEFECT	
26	2021-08-22 15:31:43	RENAME	20210804_1054	..000193_H339_210611_043248.DSE	C:\NETSQL_Target\defect\000193_H339_210611_043248.DSE.DEFECT	
27	2021-08-22 15:31:42	RENAME	20210804_1054	..000148_H311_210220_173610.DSE	C:\NETSQL_Target\defect\000148_H311_210220_173610.DSE.DEFECT	
28	2021-08-22 15:31:38	RENAME	20210804_1054	..000114_H298_200706_230218.DSE	C:\NETSQL_Target\defect\000114_H298_200706_230218.DSE.DEFECT	
29	2021-08-22 15:31:38	RENAME	20210804_1054	..000143_H368_210323_181316 (2).DSE	C:\NETSQL_Target\defect\000143_H368_210323_181316 (2).DSE.DEFECT	
30	2021-08-22 15:18:53	MOVE	20210804_1054	..000282_H187_180124_132739.dae	C:\NETSQL_Target\defect\000282_H187_180124_132739.dae	
31	2021-08-22 15:18:52	MOVE	20210804_1054	..000193_H339_210611_043248.DSE	C:\NETSQL_Target\defect\000193_H339_210611_043248.DSE	
32	2021-08-22 15:18:50	MOVE	20210804_1054	..000148_H311_210220_173610.DSE	C:\NETSQL_Target\defect\000148_H311_210220_173610.DSE	
33	2021-08-22 15:18:48	MOVE	20210804_1054	..000143_H368_210323_181316 (2).DSE	C:\NETSQL_Target\defect\000143_H368_210323_181316 (2).DSE	
34	2021-08-22 14:45:29	MOVE	20210804_1054	..000114_H298_200706_230218.DSE	C:\NETSQL_Target\defect\000114_H298_200706_230218.DSE	

Log file

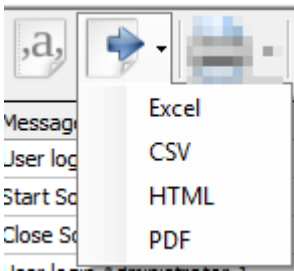
201708 21.08.2017 10:34:02 - 06.08.2017 15:25:28 581 entries

- Read next month log Data
- Start and End Time of the shown Data
- Count of the shown entries
- Update actual data entries



- Print the Table

- Print vertical sheet
- Print horizontal sheet



- Export the Table
 - Export as Excel Sheet (sheet name is „AuditTrail“)
 - Export as CSV
 - Export as HTML
 - Export as PDF without any format

10. Starting parameter

The program has parameters, which are read in when starting.

The following parameters (COMMANDS) are available:

Parameter	Function
/AUTOSTART	The program will be start automatically in scan mode.
/PROJECT:<Reportname>	Starts with a specific Project. To be use with command „/Source:“
< path > \ < filename >	identically to the parameter /Source: By using the parameter /Source: or /Target: this parameter will be ignore.
/Source:<path>\<filename>	By indication of the file (*.dds/*.dev) this is converted with the current attitudes. The program is terminated immediately after the conversion.



Note:

Not every element will be supported by every file format.

Notes:

It is used adjusted name. The data are converted however after the attitudes in the program. The file extension can be possibly wrong.

Example:

AdvancedSmartMove.exe /Project:testcsv /Source:c:\11212010.DDS

11. Program Settings



Settings Tab 1

From the information dialogue the version number and the address become evident when questions and suggestions.

11.1 License

11.1.1 Serial number

If the software in the demo version is installed, put the license number into these fields. With the Button save serial number the software is free licensed.

11.1.2 Name

Under name (company) the name of the enterprise is registered, if specific changes (e.g. a changed export format) at the software were made.

A serial number with the registered company name can be acquired at the company Yokogawa.

11.2 Language change-over

By the Button “language” the language change-over. After selecting a language, these select are directly switched. Please start the program again, in order to receive a complete language change-over.

11.2.1 New language file provide

It is possible to translate the program into different languages.

To produce a further language, you proceed as follows:

1. Copy the file english.lng from the installation folder into a temporary folder.
2. Designate the file into the new language over, e.g. france.lng.
3. Open the file and a changing you the texts behind the =-Sign.
4. Store the file and copy them into the installation listing.
5. The new language can be selected after a restart by AdvancedReport.

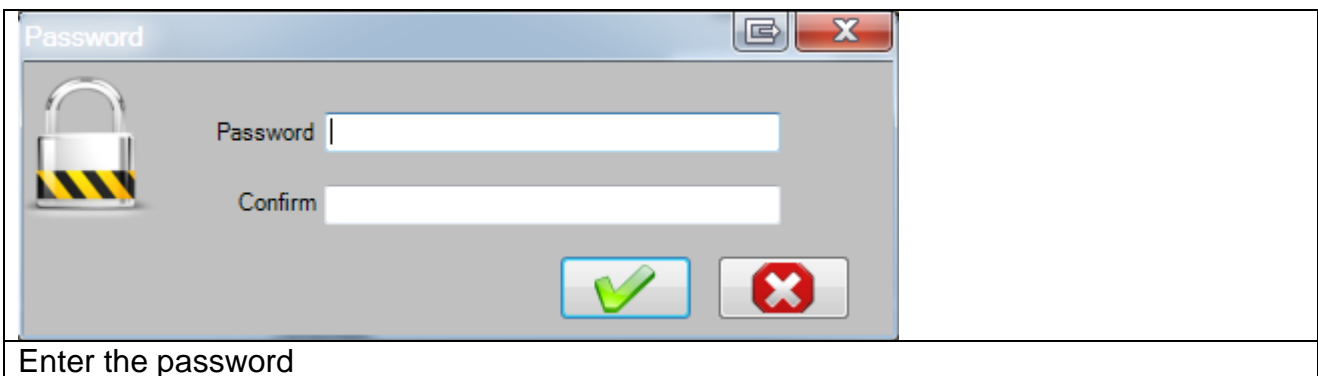
11.3 Program protection

Check this option to disable the following function.

1. Save program settings
2. End the program.

By checking the checkbox “protect program control” and entering a password the save will be protected by the password.

Also it is not possible to close the program without entering the password.



For saving the protection press the save button and re-enter the password.

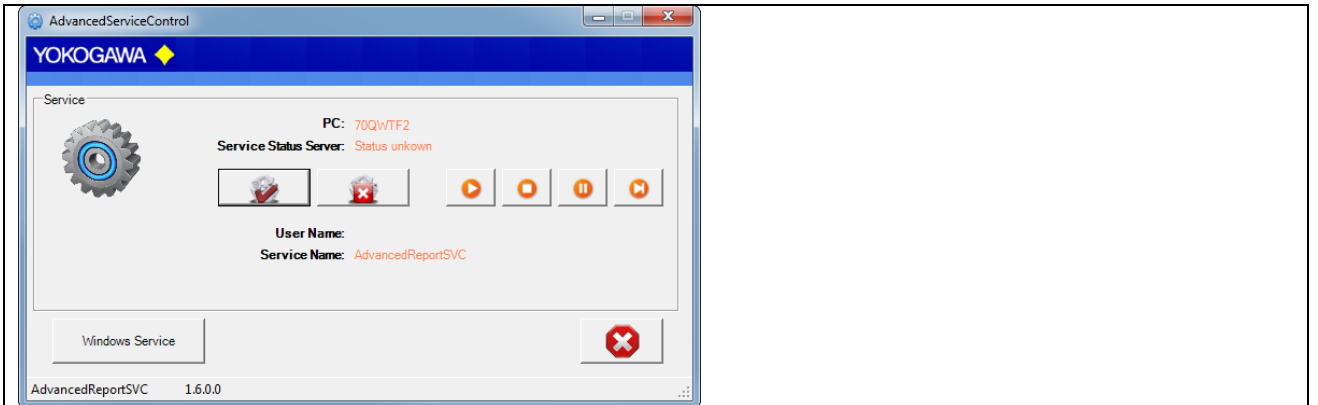
The protection mode will be displayed at the status bar on the bottom of the program.

11.4 Service settings

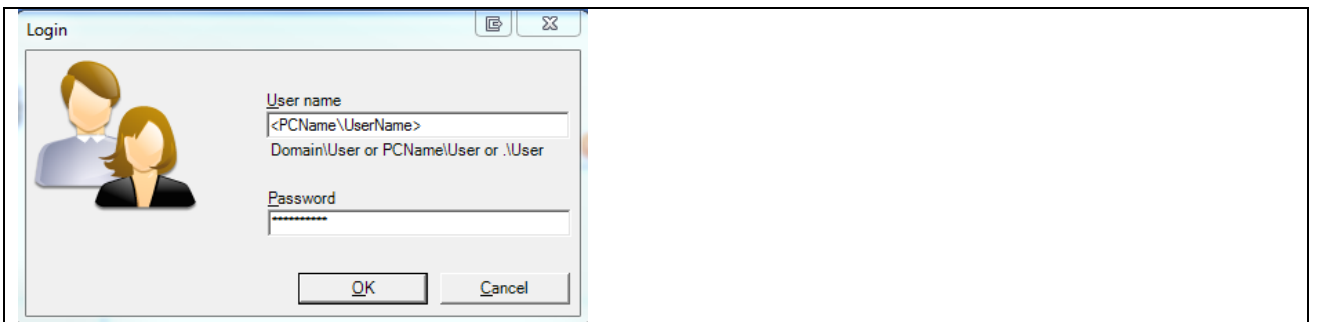
Please check for details also the installation manual.



Service Settings



Service Settings as separate Application



Install the Service as User

If the fields are empty, the service will be installed as “System” User. With this user it is NOT possible to use Excel.



Counter of Software Instances

It is possible to increase the conversion speed for the total counter of files. With this counter it will be convert data files parallel.

Be careful with this parameter, the speed of another program can be slowly.

The Service Status Window will be shown the actual action of the Windows service.

11.5 Logging /Backup and Restore Settings

Every important message is stored in the windows event log. With the pull-down menu it is possible to select the logging rate.

With default setting you will find only the important events in the Logfile. For more detail information within the error handling select the higher event log rate.

Error Count Max:

After 20 internal Errors, the windows service will be restart automatically. For this function it is necessary to start the service as a user with administrative rights.

Termination Waiting Time [Minutes]:

If the Software running as a service and a conversion of the report becomes an error, the conversion will be terminat after 10 minutes and also the Excel instance will be terminate.



Export/Import Settings

With this button it is possible to Backup and Restore the settings file.



12. Run Program as NT- Service

It is possible to start the program as a service. With this it is not necessary to login on the computer. It starts automatically with Windows.

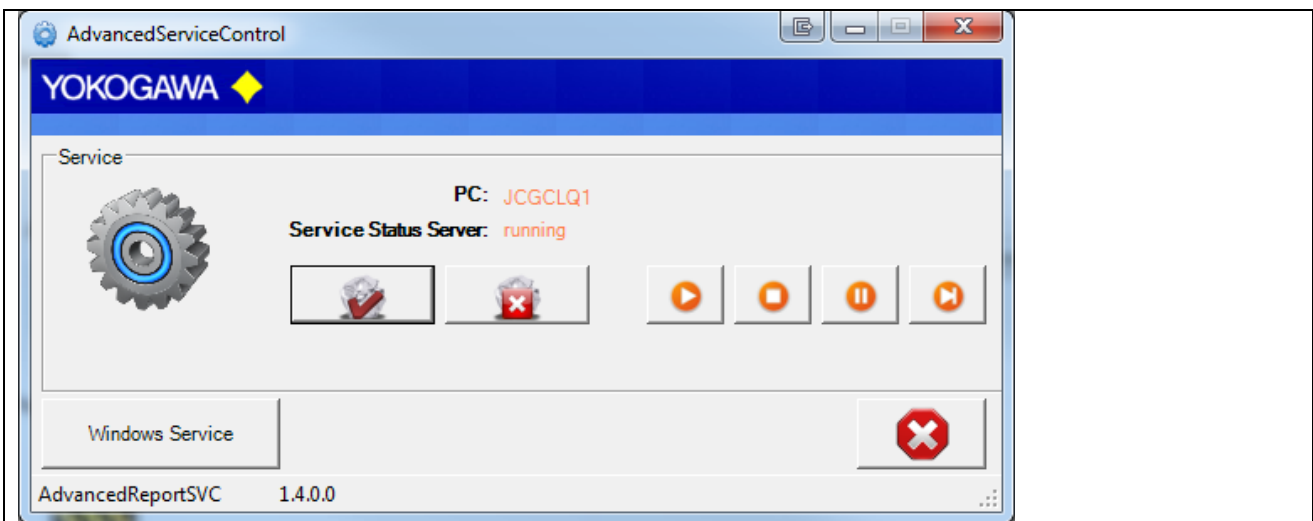


Note:

- Also the FTP Server has to run as a Service!
- All Settings have to be made as User with administrative Rights

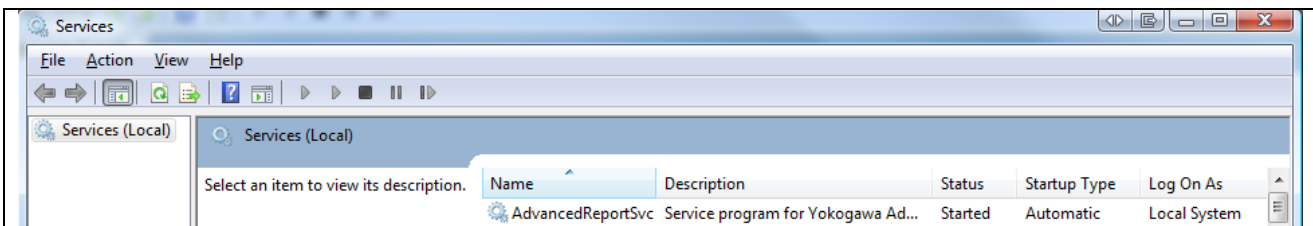
12.1 Installation

Change to the Settings register. The Button „Install“ add the service „AdvancedSmartMoveSvc“ into the control panel. The Button „Start“ activate the Service. The service start as „System“ User in Automatic Mode. By changing the settings, it will be activate with a new folder scan.

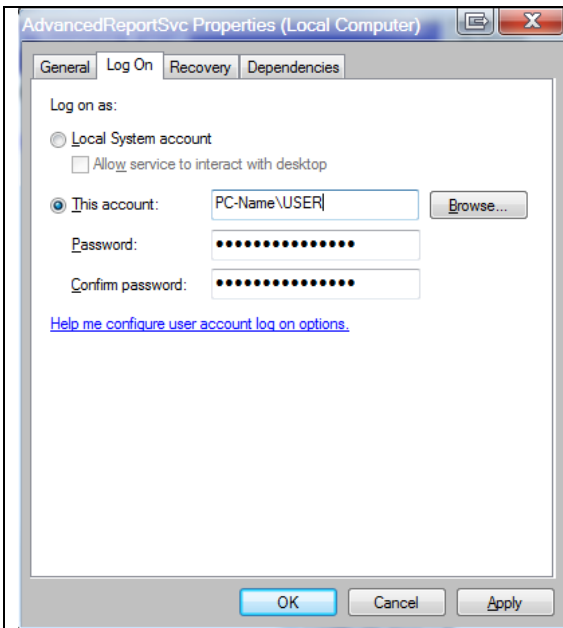


Install Service in AdvancedReport

The messages are sending to the Windows event logger (Control Panel → Administrative Tools → Events).



Windows Services



Add User Name to the Service

With Version 2.7 und newer the service will be restart after an Error Counter of 10. For this function it is important to start the service as an user with administrative rights.



ATTESION IMPOTANT:

It is important to start the service as a user with administrative rights.

12.1 Deinstallation

Change to the Settings register. The Button „Stop“ stopped the service. After stopping the service it is possible to uninstall the service by using the button „Un-Install“.

13. Error handling

13.1 Solve Problem by yourself

If an error is recognized in the conversion or in general running of the program, this is indicated by an “Alert window” and registered in the error log.



Note:

1. Please read this chapter to solve the problem.
2. Use the Error Handling routine before calling your Services Team.

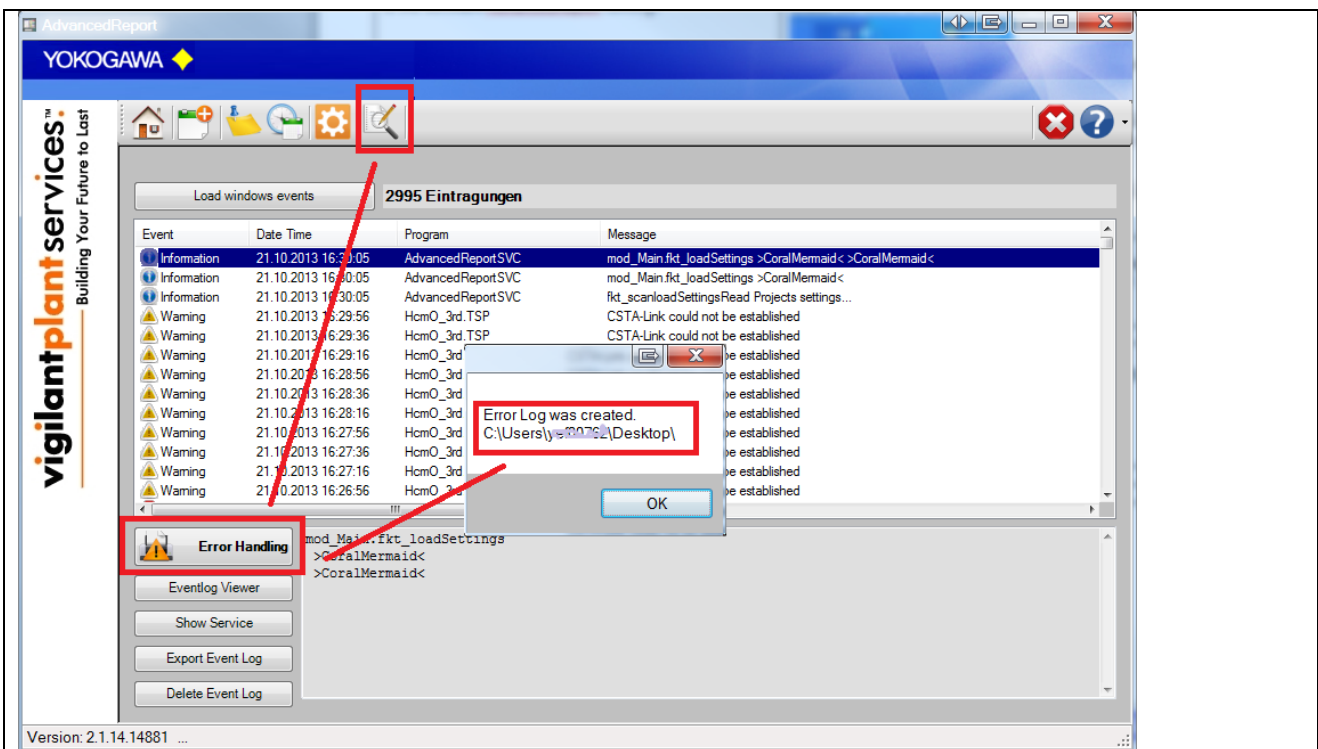
13.2 Software AdvancedSmartMove

During the conversion or in the generally running program if an error is recognized, this is indicated by a reference display window and registered in the file error.log.

Please send the file with exact error report and if necessary, the file which can be converted to the well-known email address.

If the programs running as a Service, the messages are also sent to the Windows event logger (Control Panel → Administrative Tools → Events)

- Start AdvancedSmartMove
- Select Button >Events< See next picture.



Start Error Handling routine

14. Appendix

14.1 Reporting Deactivation and activation

To deactivate a reporting temporary, you will find two files at the installation folder.

- ENABLE_Reporting.vbs
- DISABLE_Reporting.vbs

At these files you must set the Report Project Name.

If the reporting is deactivated, the new data files will be move to the target file destination. So, the software will be work, but no report is created.