



# AdvancedSQLV2 Installation manual

YOKOGAWA Deutschland GmbH  
Broichhofstraße 7-11  
40880 Ratingen  
Tel. +49 - 2102 - 4983 - 0

## Content:

|        |  |     |
|--------|--|-----|
| 1.     | Introduction.....                                  | 3   |
| 2.     | Revision.....                                      | 7   |
| 3.     | System Requirements .....                          | 9   |
| 3.1    | Hardware .....                                     | 9   |
| 3.2    | Software .....                                     | 17  |
| 3.3    | Prerequisite.....                                  | 18  |
| 3.4    | Operating System .....                             | 19  |
| 4.     | Download.....                                      | 21  |
| 4.1    | Internet Explorer Message.....                     | 22  |
| 4.2    | Demo version .....                                 | 25  |
| 5.     | Installation Procedure Diagram .....               | 27  |
| 6.     | Installation .Net Framework .....                  | 30  |
| 6.1    | Windows Server 2016 .....                          | 30  |
| 6.2    | Windows 10.....                                    | 54  |
| 6.3    | Windows 7 .....                                    | 64  |
| 7.     | Installation .....                                 | 66  |
| 8.     | Windows FTP server installation .....              | 97  |
| 8.1    | Windows XP .....                                   | 97  |
| 8.2    | Windows 7 FTP server installation .....            | 135 |
| 8.3    | Test FTP Function / Testing the FTP Transfer ..... | 184 |
| 9.     | Windows Firewall.....                              | 190 |
| 9.1    | Windows 7 .....                                    | 190 |
| 10.    | Run Program as NT- Service .....                   | 200 |
| 10.1   | Installation .....                                 | 202 |
| 10.2   | Installation possible changes .....                | 209 |
| 10.2.1 | create a new lokal user: .....                     | 209 |
| 10.2.2 | Change the settings for the service:.....          | 216 |
| 10.3   | De-Installation Service .....                      | 227 |
| 11.    | De-installation Program .....                      | 231 |
| 12.    | Additional Options.....                            | 232 |
| 13.    | More Solutions .....                               | 234 |

## 1. Introduction

The program AdvancedSQLV2 converts automatically data files and DX100/200 event files from the Yokogawa DX100/200, FX100, DX100P/200P and DXAdvanced recorders.

The condition to use the above mentioned functions is the availability of the recorder files, the display data files<sup>1</sup> and/or the event files<sup>2</sup> in a directory in the actual computer. By the automatic FTP function of the recorder this computer directory can be filled with the generated recorder data files. More information can be found in the instruction manual of the recorder.

## 2. Revision

| Date    | Version | Reason          |
|---------|---------|-----------------|
| 09.2014 | 1       | English version |
| 09.2018 | 2       | Updated manual  |
|         |         |                 |
|         |         |                 |

---

<sup>1</sup> Display data files, data files of a Yokogawa recorder

<sup>2</sup> Display event files, data files of a Yokogawa Recorder

### 3. System Requirements

#### 3.1 Hardware

For the documentation of the test, a paperless Data recorder is required. The Data recorders listed below are supported by this Software:

| Recorder  | File extension  | Data type   |
|---|---|---|
| GX20 / GP20 / GM10<br><a href="http://www.smartdac.com">www.smartdac.com</a><br><br>[with /AS1 Pharma Option] | .GDS<br>.GEV<br><br>.GSE<br>.GSD<br>[ /AS1 Pharma Option] | Display Data<br>Event Data<br><br>Display Data<br>Event Data<br>[with /AS1 Pharma Option] |
| DX1000 / DX1000N / DX2000<br>[ DXAdvanced ]<br><a href="http://www.DAQStation.com">www.DAQStation.com</a>     | .DAD<br>.DAE  | Display Data<br>Event Data  |
| DX1000 / DX2000<br>[with /AS1 Pharma Option]  | .DSD<br>.DSE  | Display Data<br>Event Data  |
| DX100 / DX200   | .DDS<br>.DEV  | Display Data<br>Event Data  |
| FX1000  | .DAD<br>.DAE  | Display Data<br>Event Data  |
| MV1000 / MV2000<br>[ MVAdvanced ]   | .DAD<br>.DAE  | Display Data<br>Event Data  |
| FX100   | .DDS<br>.DEV  | Display Data<br>Event Data  |
| DX100P / DX200P<br>Pharma-Ausführung  | .DBD<br>.DBE  | Display Data<br>Event Data  |
| MW100 / MX100   | .MXD  | Data  |
| DL850   | .WDF  | Data files  |

For the analysis using a PC, the following minimum hardware requirements must be met.

- Hard disk capacity: 13 MB
- Memory: 1GB

### 3.2 Software

The program AdvancedSQL Version 2 is Windows based and requires therefore a Windows Operating System.

### 3.3 Prerequisite

- Windows .Net Framework 2 Full installation
- Windows .Net Framework 4 Full installation (is checked by setup)
  - o <http://www.microsoft.com/en-us/download/details.aspx?id=17718>

### 3.4 Operating System

The program has been tested on the following platforms:

- Windows 7 [32bit]
- Windows 7 [64bit]
- Windows 8 [64bit]
- Windows 10 [32bit]
- Windows 10 [64bit]
- Windows Server 2008
- Windows Server 2012
- Windows Server 2012R2
- Windows Server 2016

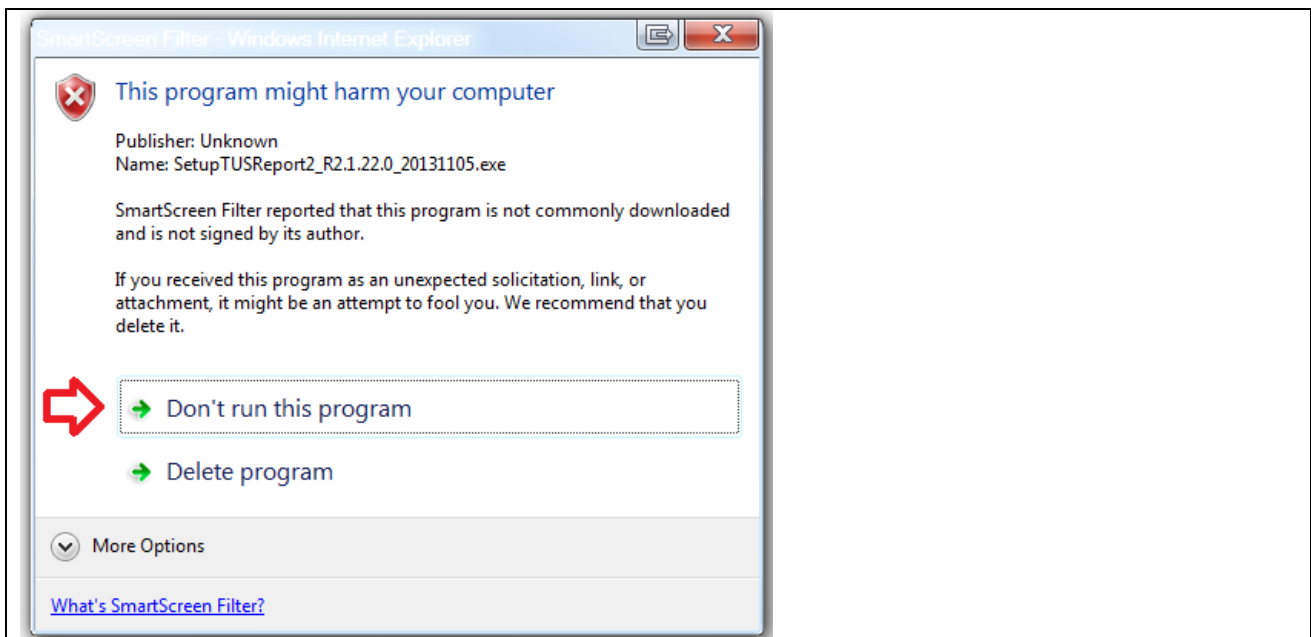
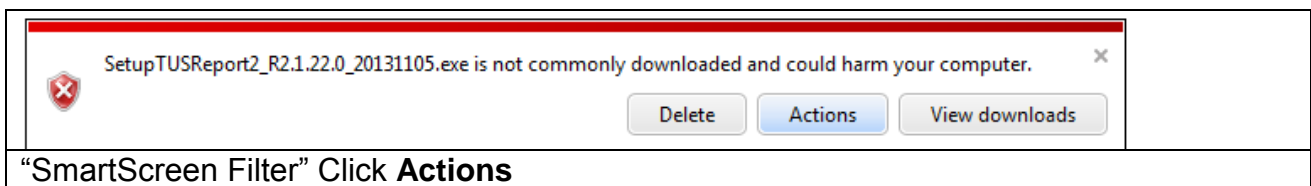
## 4. Download

The latest version will be found on our Web page:

<https://www.AdvancedTools.de>

### 4.1 Internet Explorer Message

If the function “SmartScreen Filter” on the Internet Explorer enabled, you will get this screen.



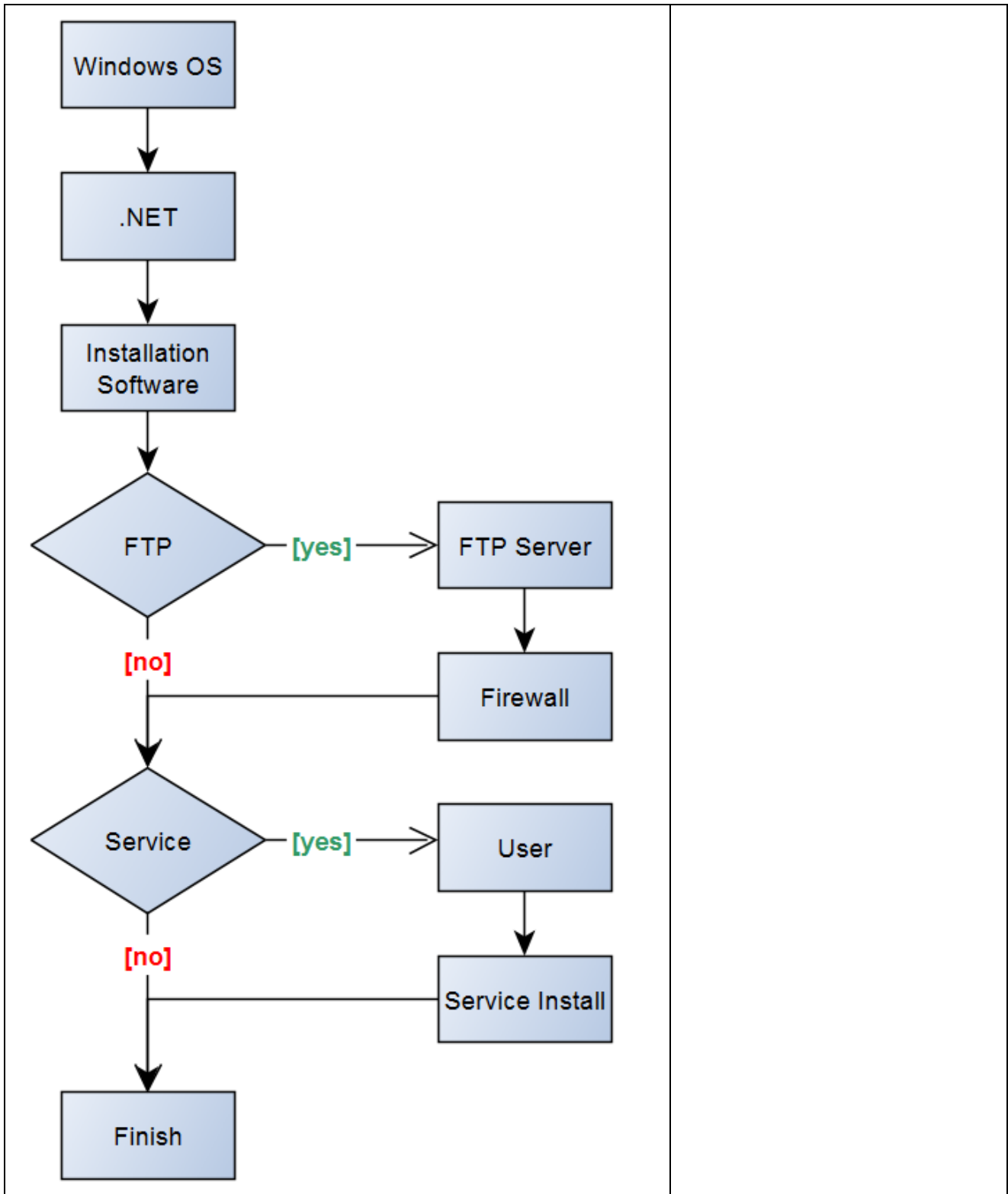
For downloading, press Button **Don't run this program**, otherwise you have to re-download the file.

### 4.2 Demo version

For Demo Version, leave the Serial number field blank.

## 5. Installation Procedure Diagram

For Installation please follow the Installation Diagram. Each step will be described at the following chapter.

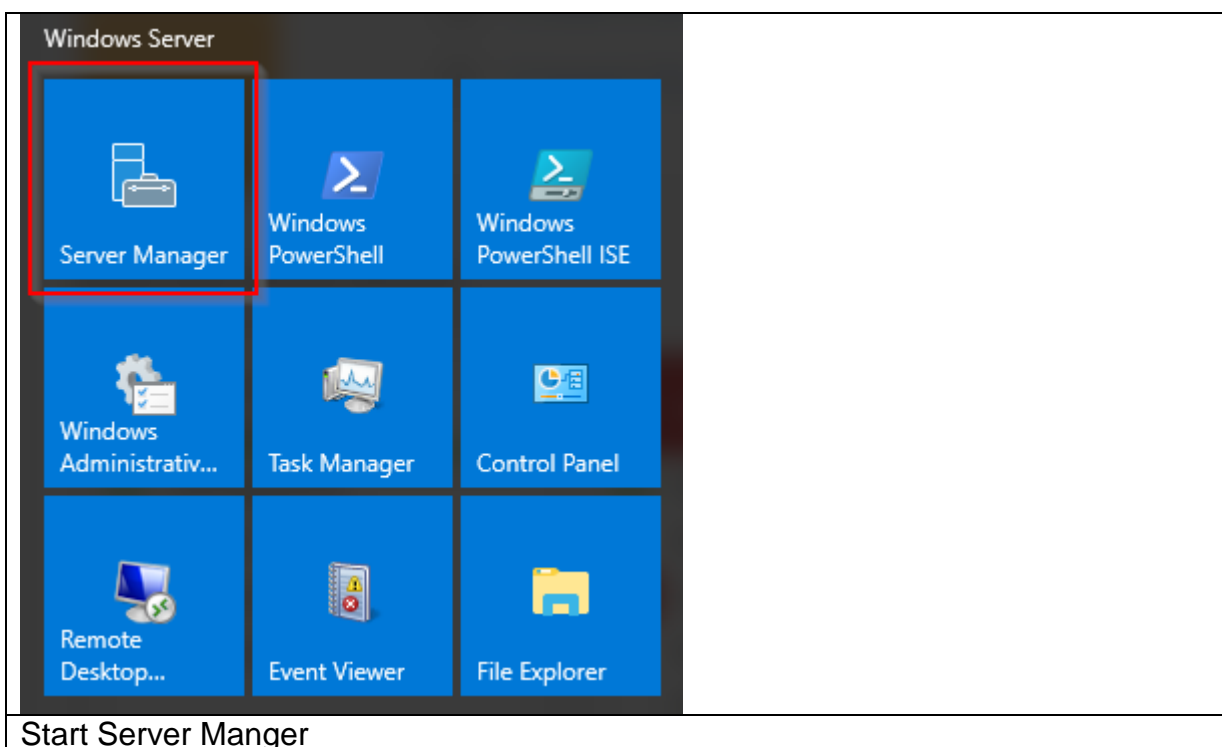


## 6. Installation .Net Framework

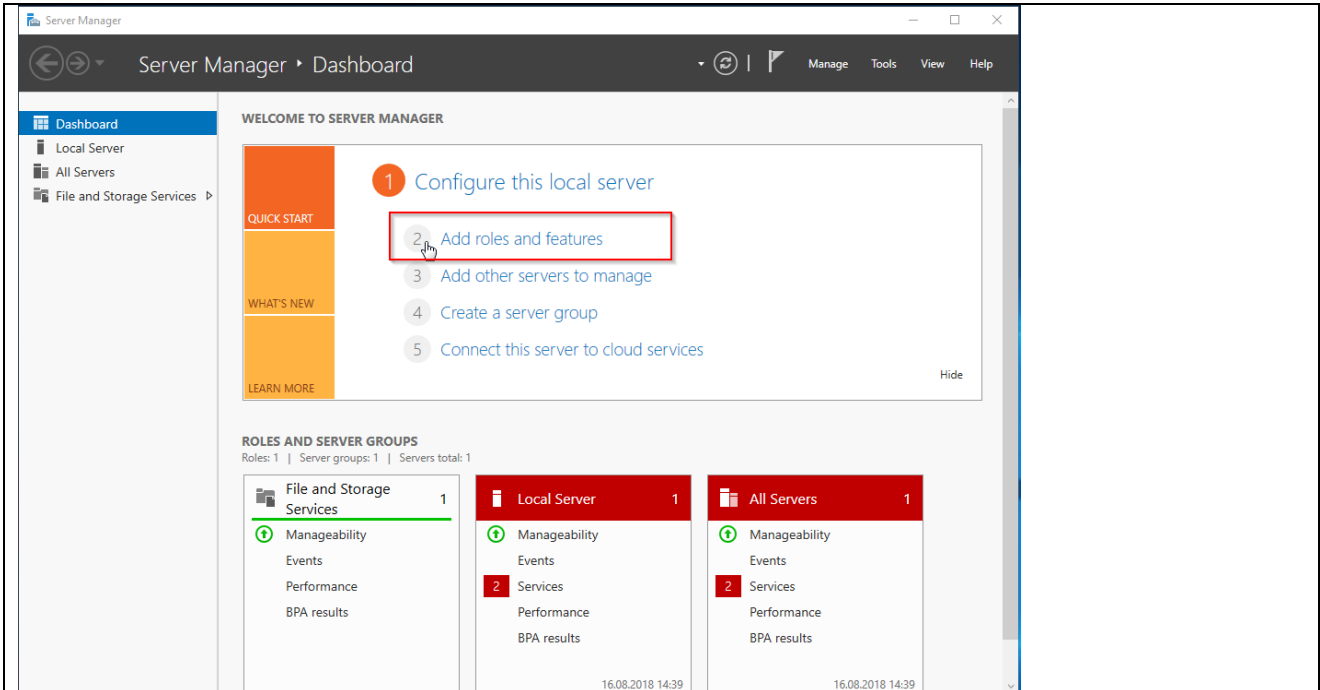
### 6.1 Windows Server 2016

For the installation of Windows .Net Framework it is required to use the Windows installation CD or an Internet connection.

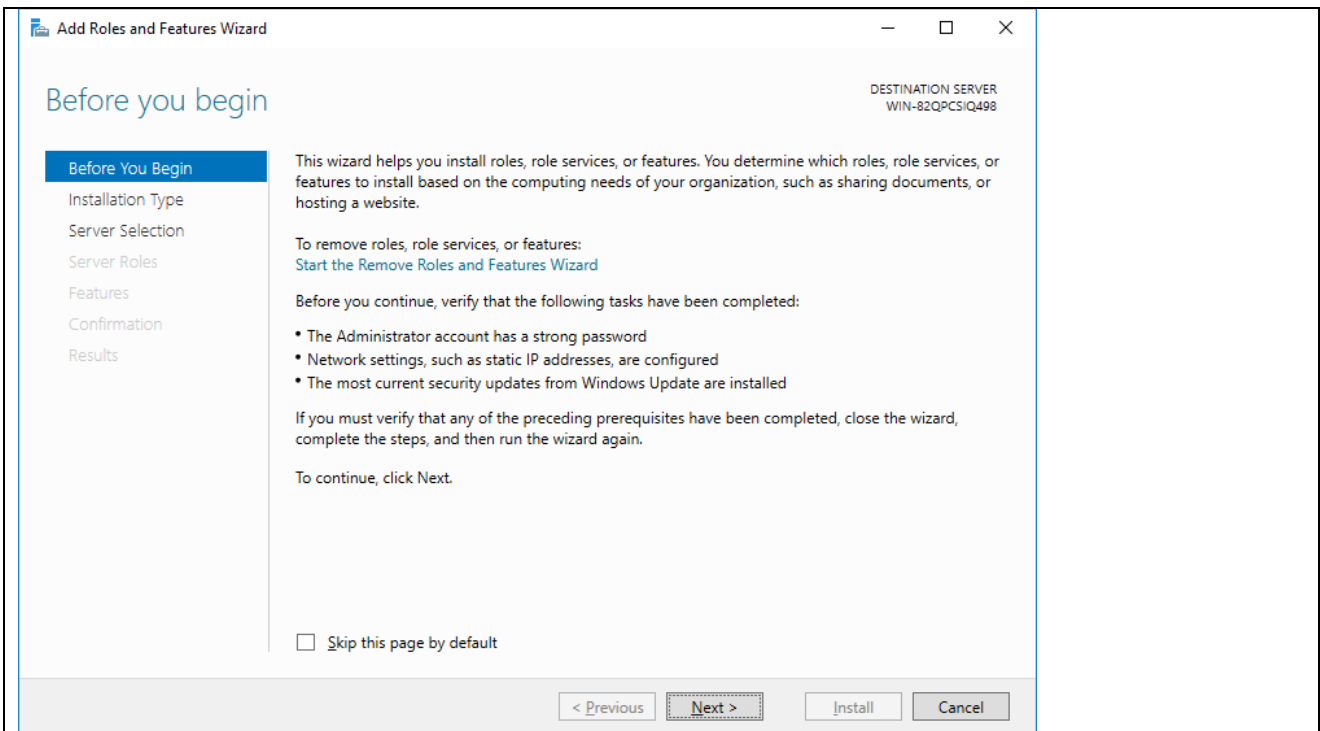
- Windows .Net Framework 2 Full installation
- Windows .Net Framework 4 Full installation



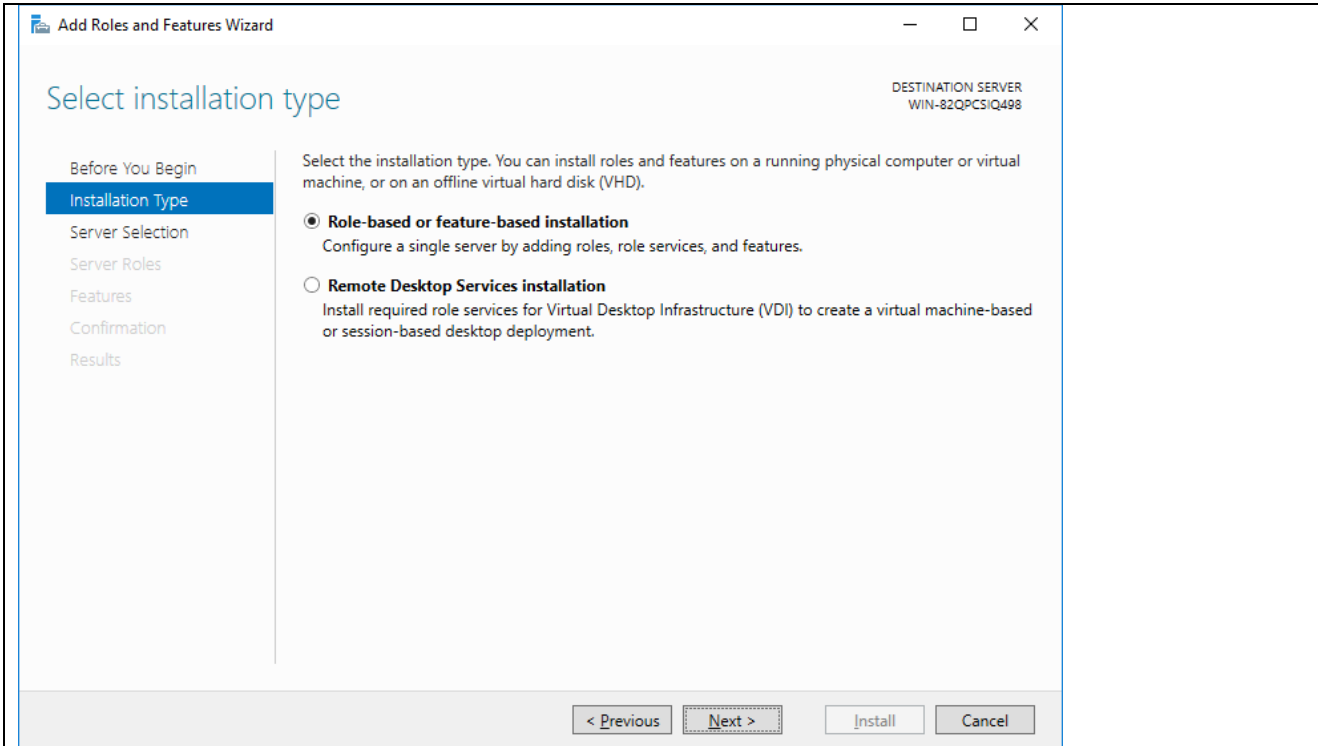




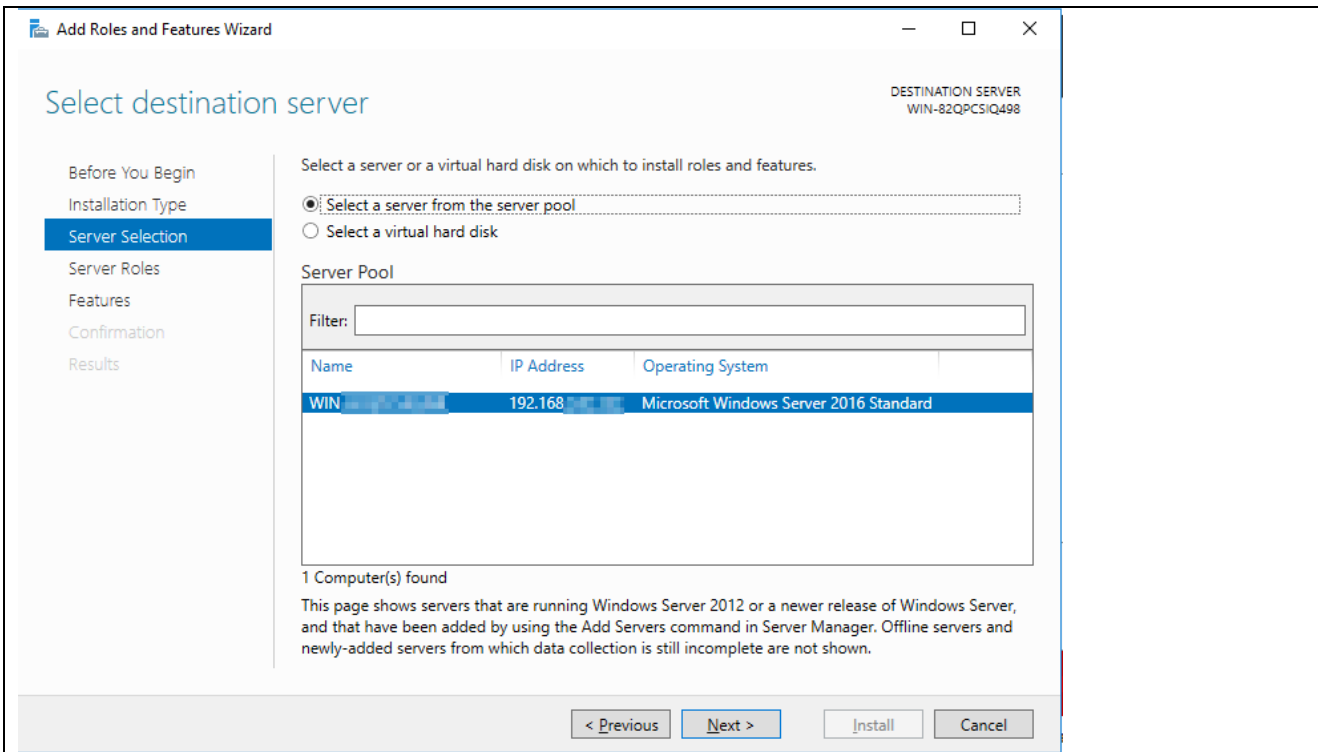
Add a role



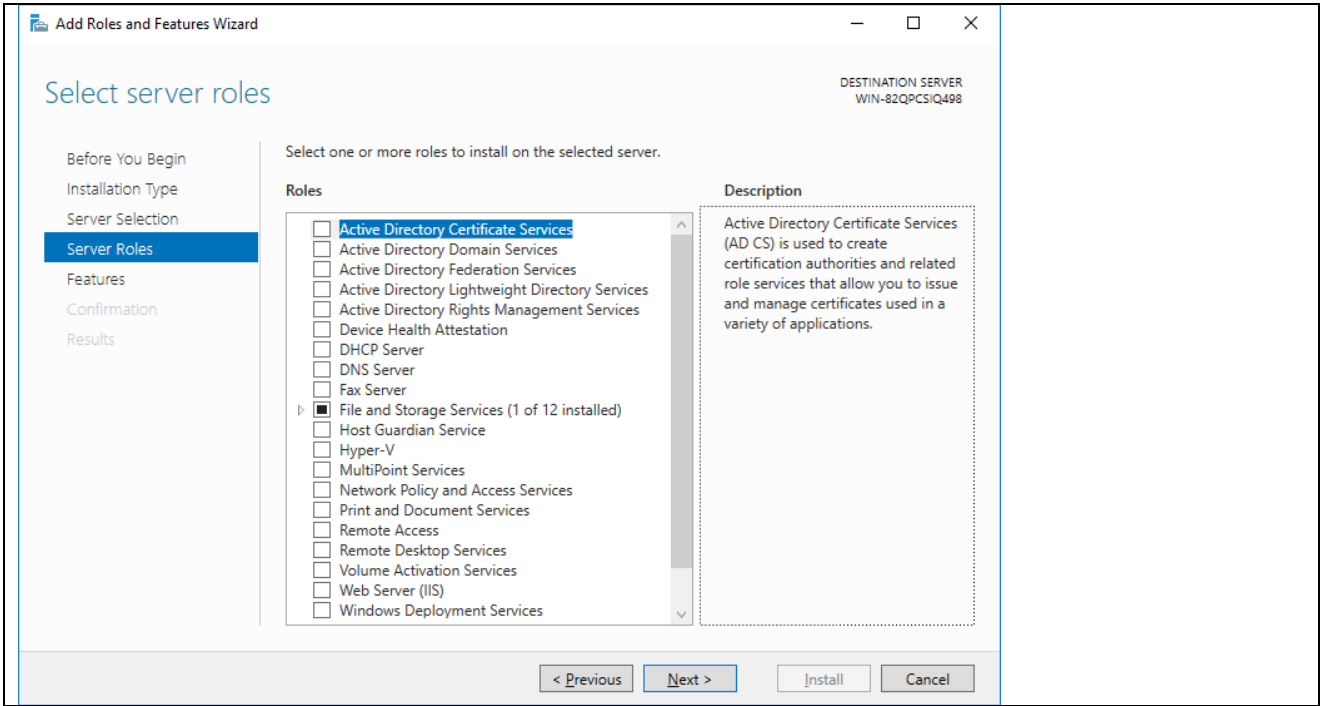
Follow the assistant



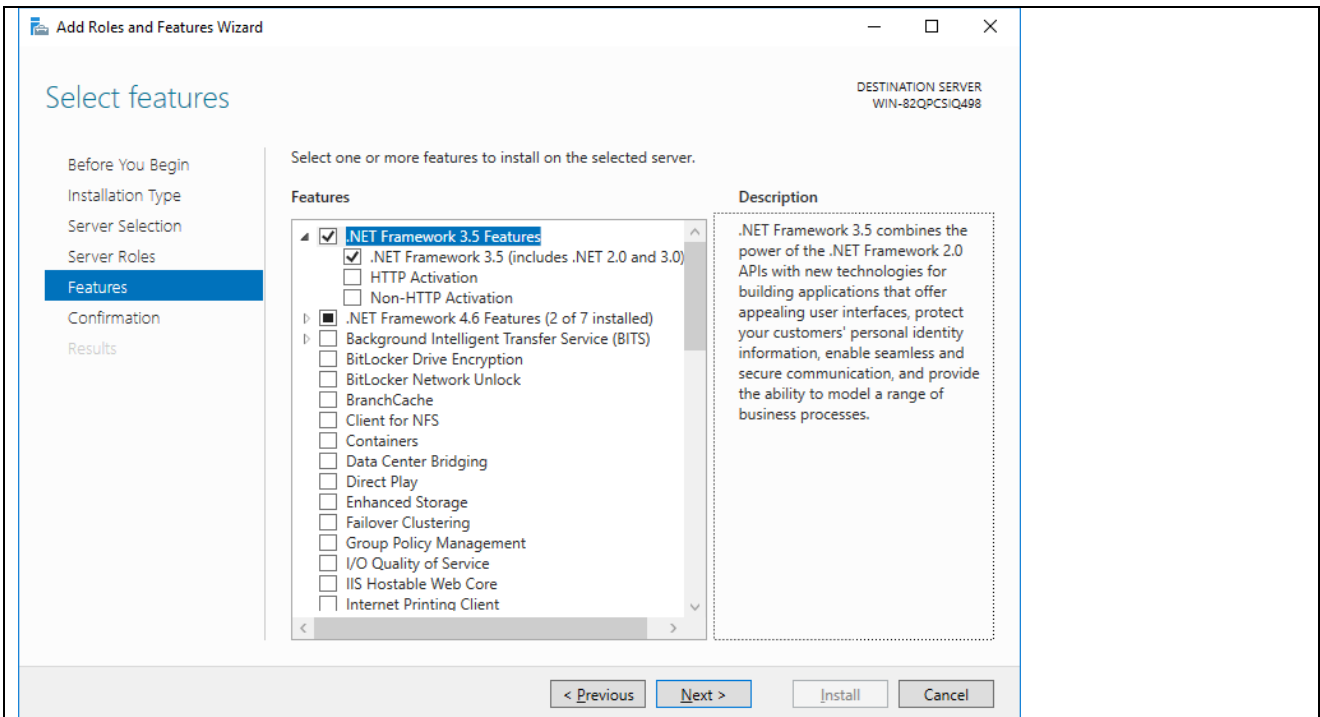
Role based installation



Use the active partition

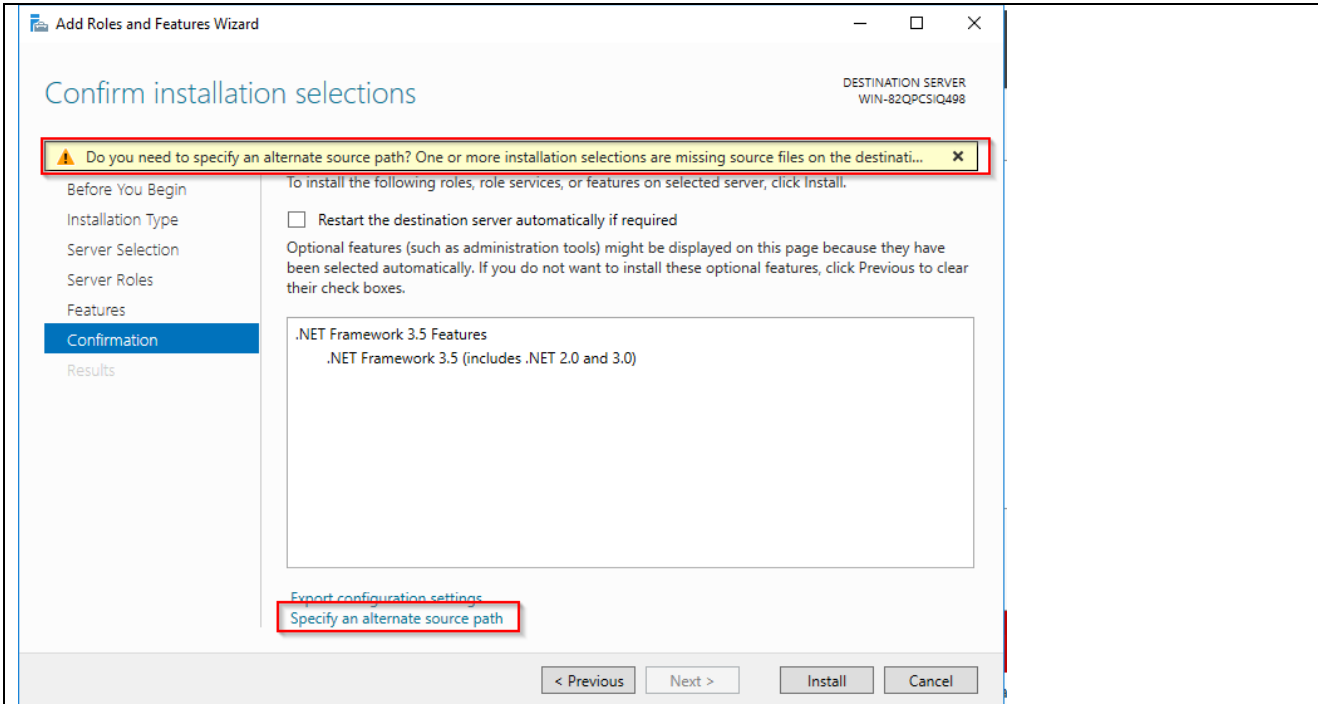


Check no extras

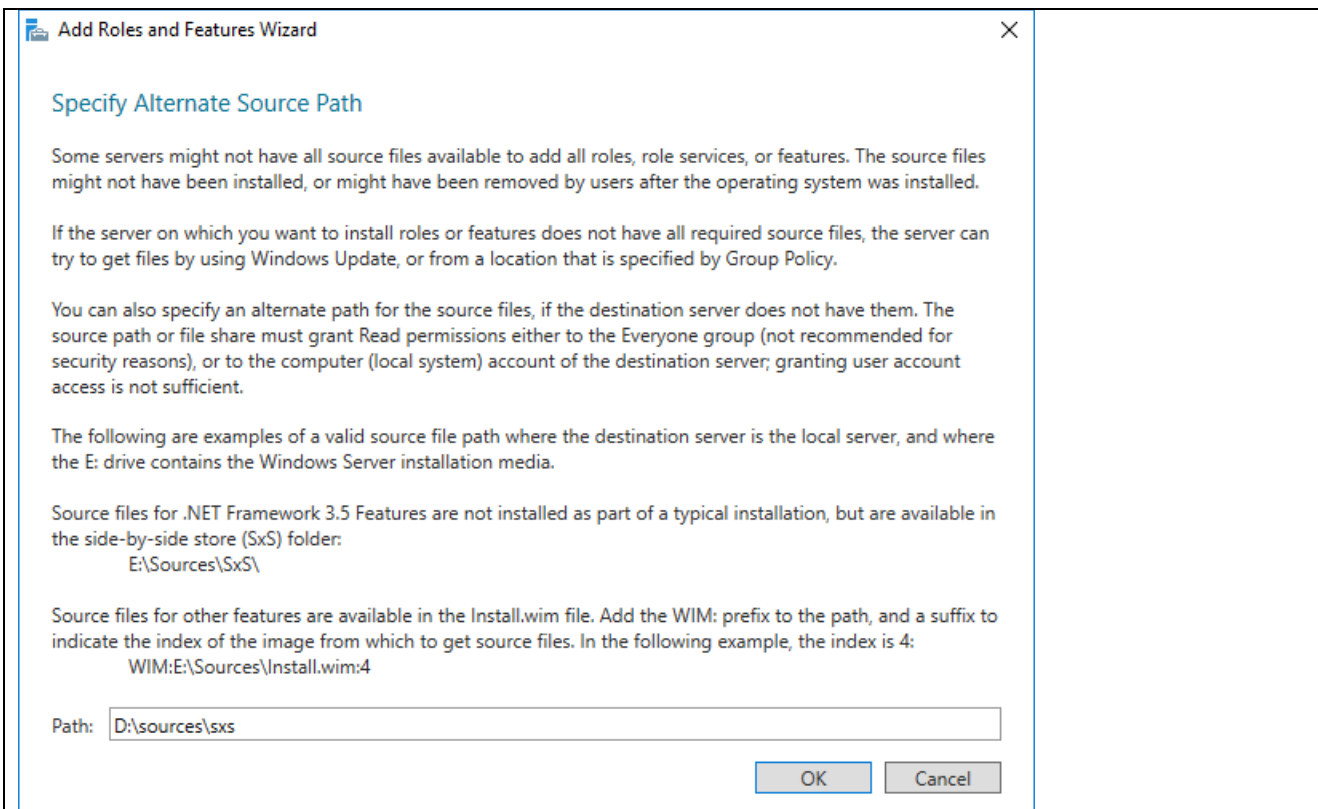


.Net Framework 3.5 Features

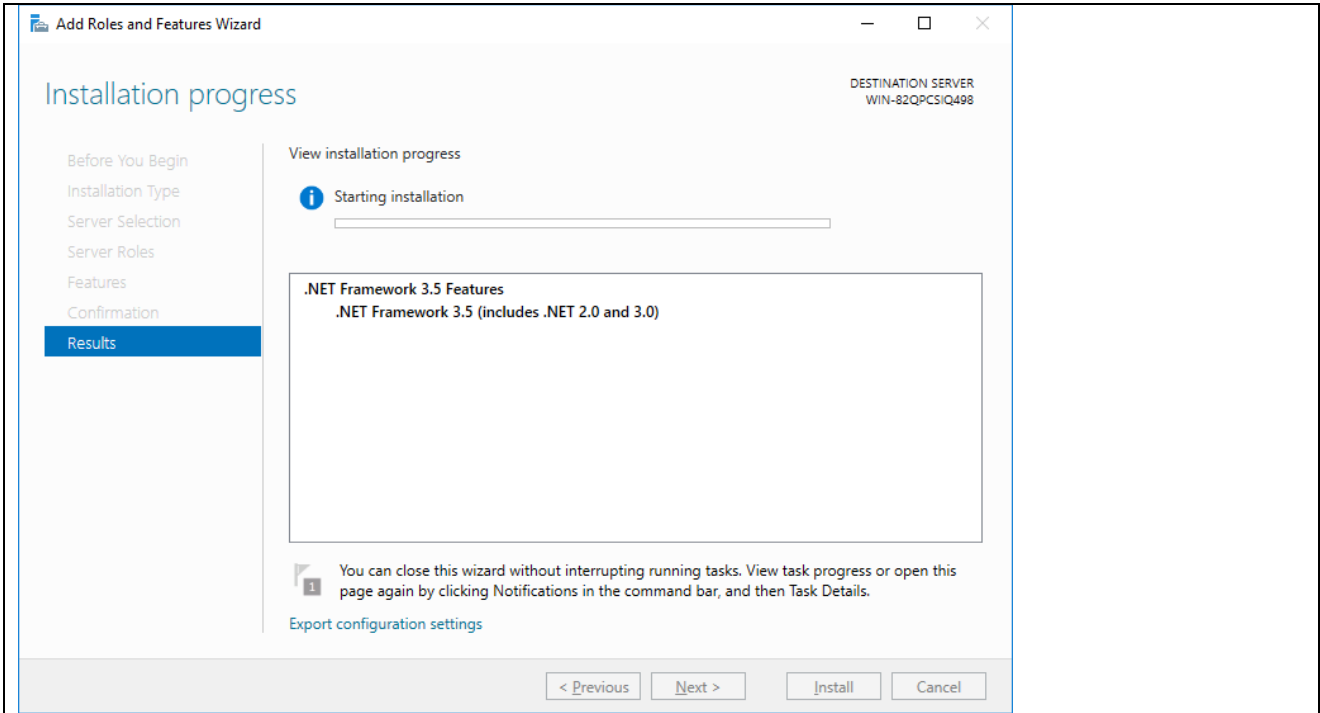
→ .Net Framework 3.5 Features (include .Net 2.0 and 3.0)



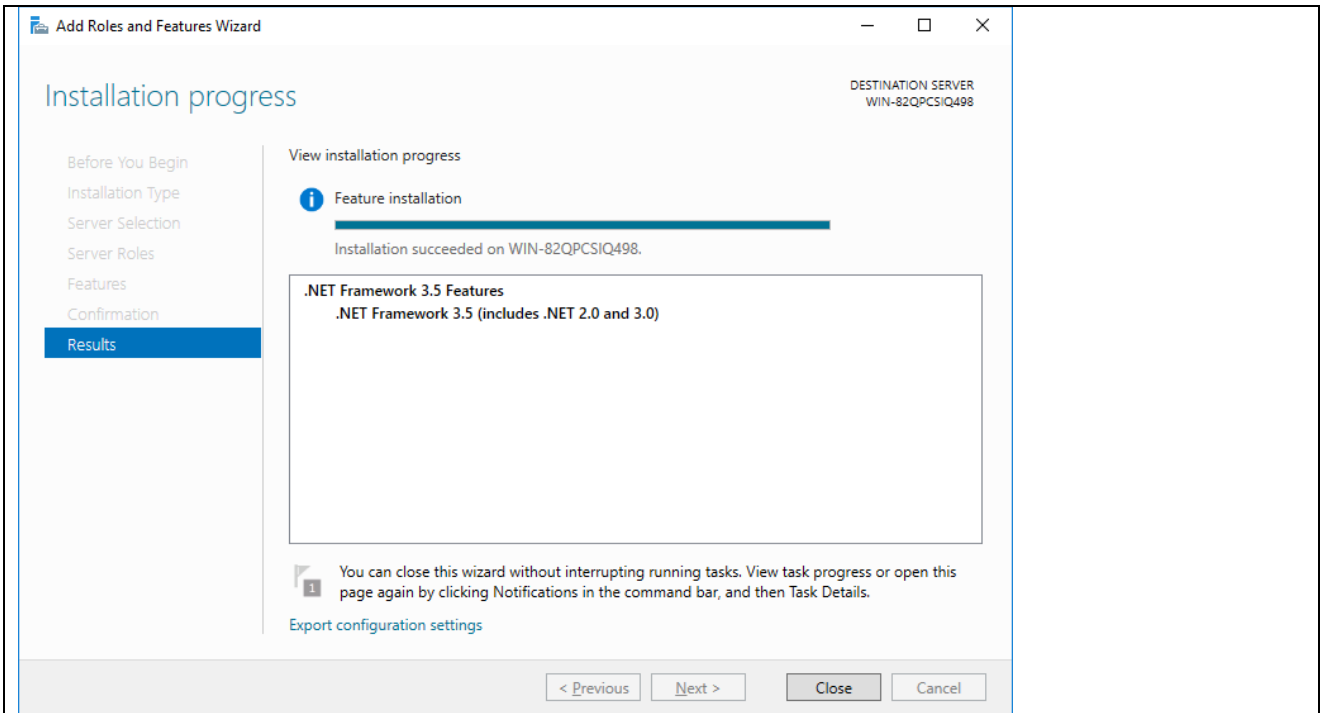
If there is no Internet connection available, select the path to the Windows installation CD.



Use the path with the folder „/SxS“

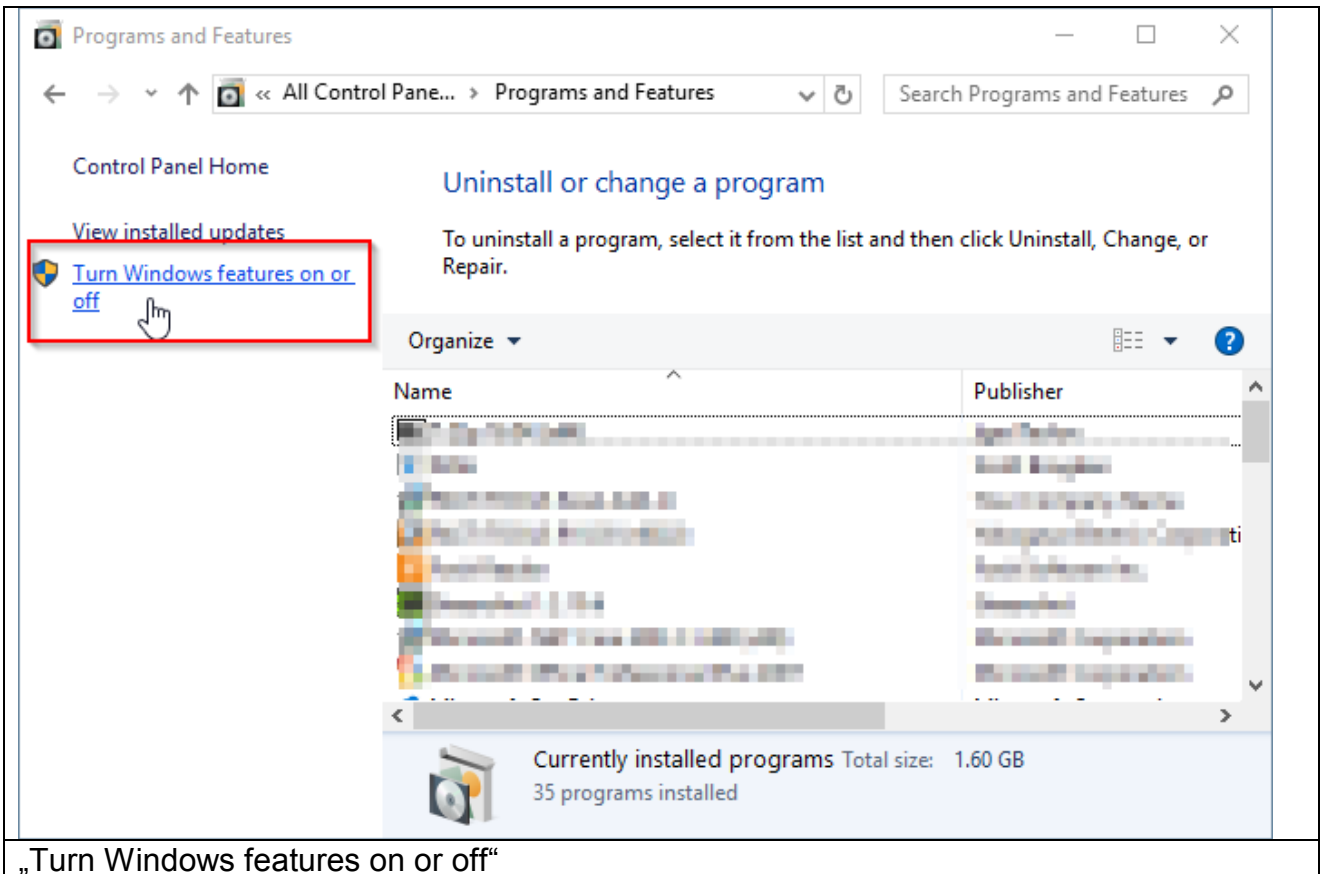
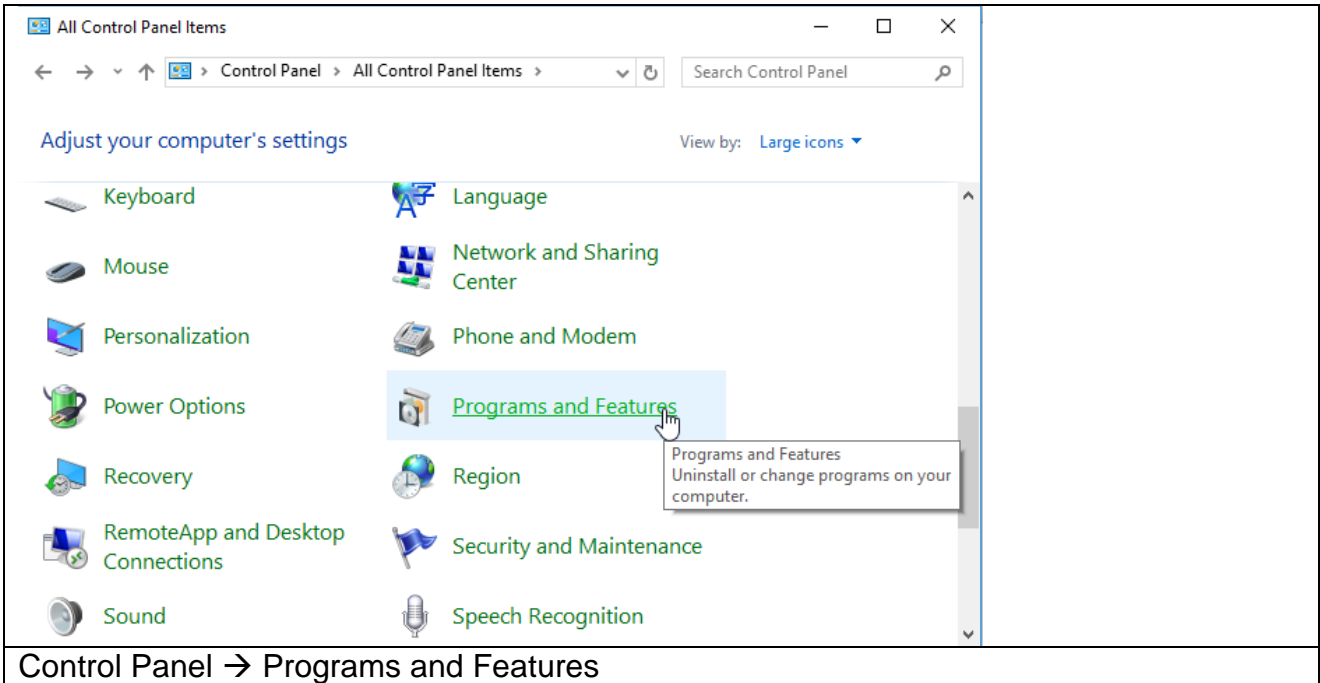


Installation starts

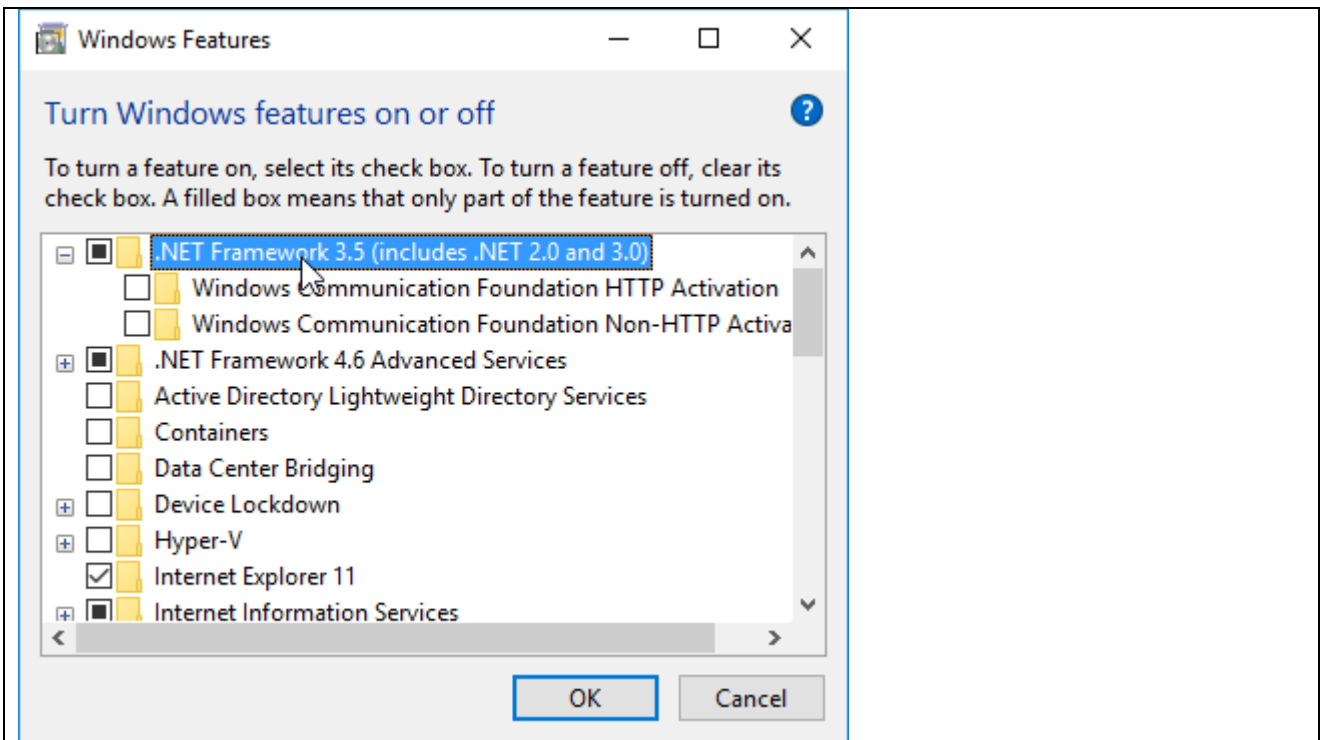


Installation successfully

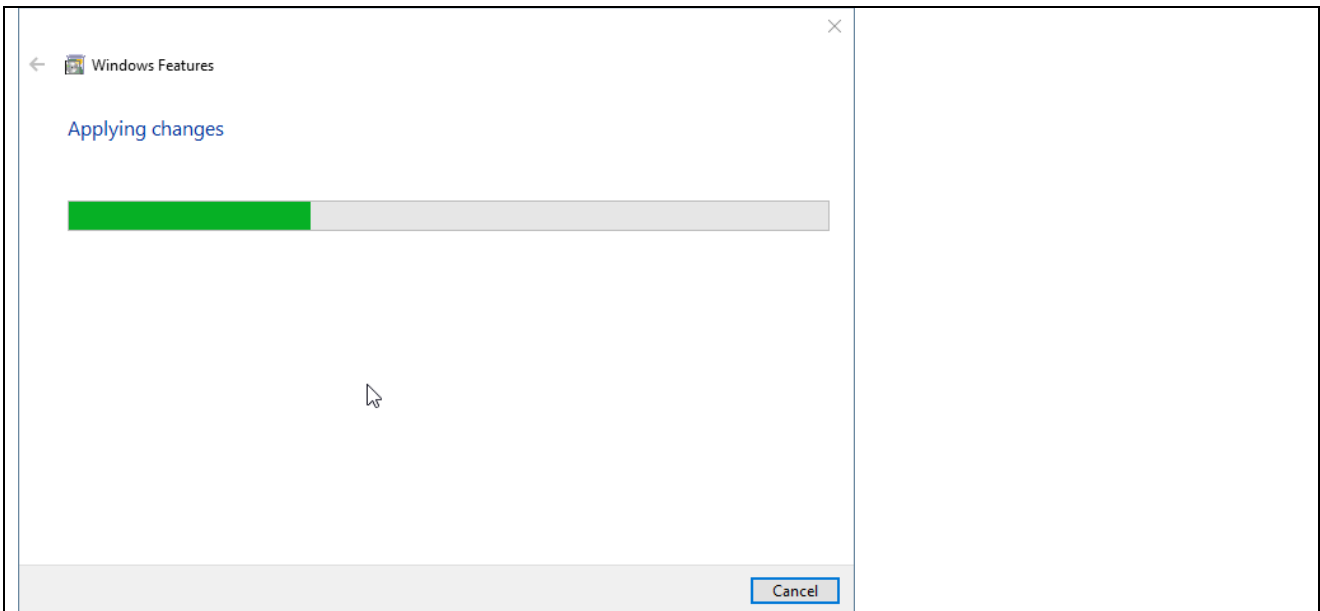
## 6.2 Windows 10 Windows .Net installation



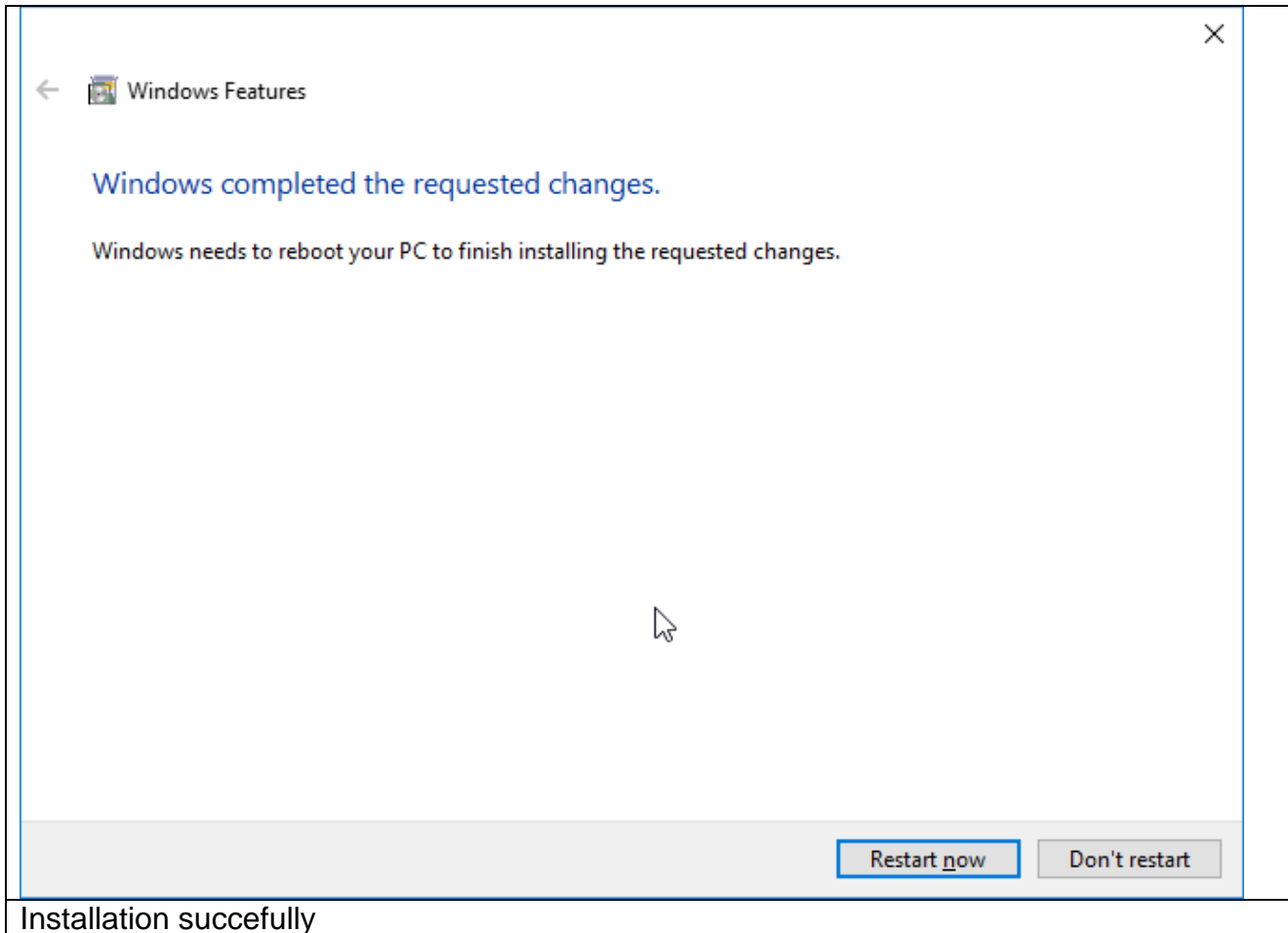
„Turn Windows features on or off“



.Net Framework 3.5 Features  
→ .Net Framework 3.5 Features (include .Net 2.0 and 3.0)



If there is an Internet connection it will be start automatically.



### 6.3 Windows 7

For installation on Windows 7 it is necessary to download the .Net framework from the Microsoft Webpage.

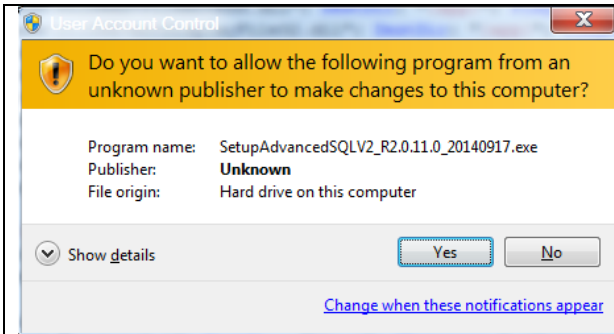
Windows .Net Framework 2 is mostly preinstalled on Windows 7.

- Windows .Net Framework 2 Full installation
- Windows .Net Framework 4 Full installation
  - o <http://www.microsoft.com/en-us/download/details.aspx?id=17718>

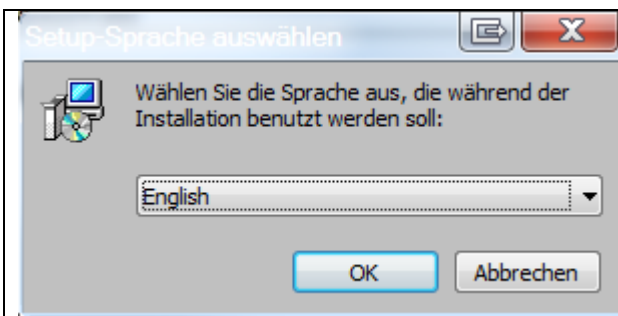


## 7. Installation

Execute the program SetupAdvancedSQLV2.exe.  
Then a window to select the language will appear.  
Select “English” and confirm it with the “OK” button..



Start setup with administrative rights.

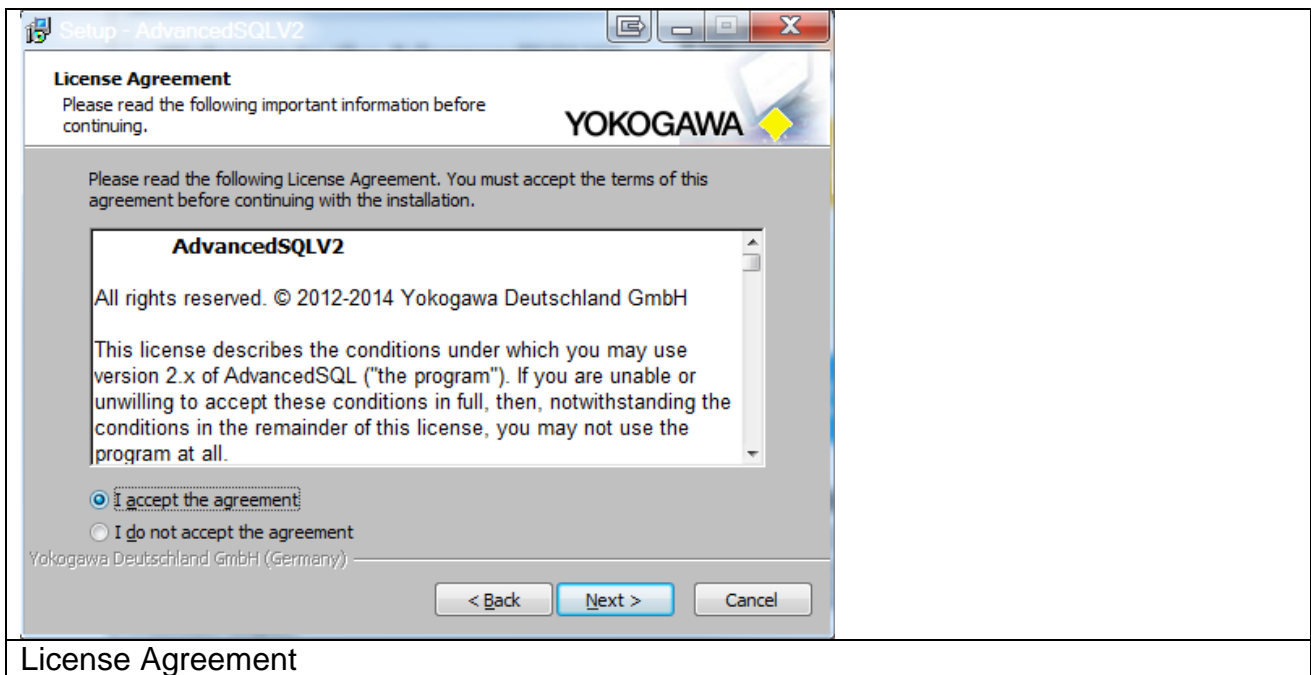


Language selection

Confirm the welcome window with “Next”.

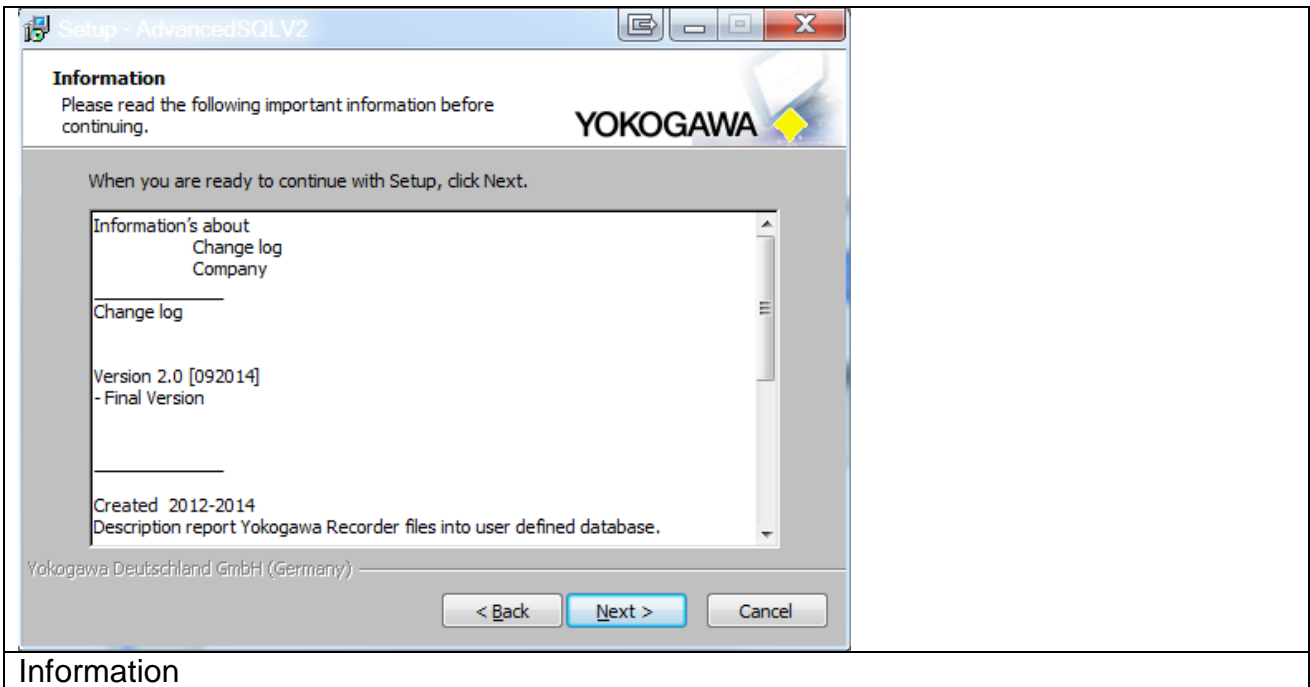


Welcome display

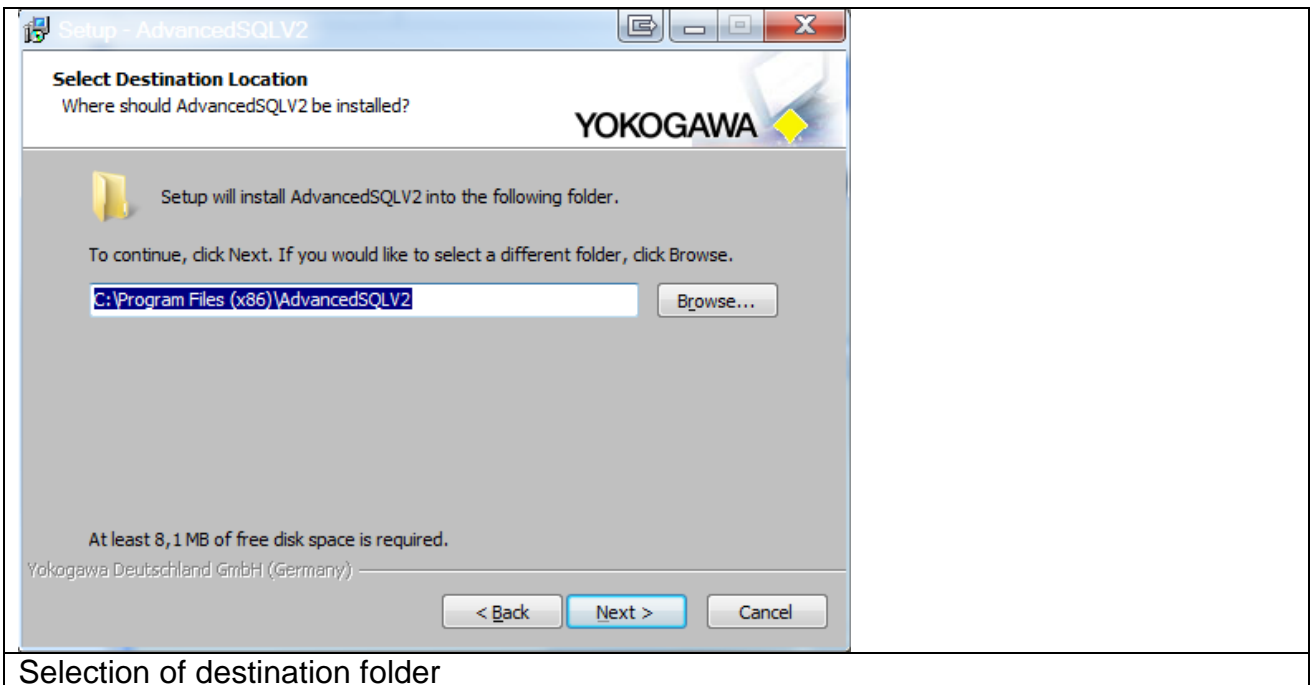


License Agreement

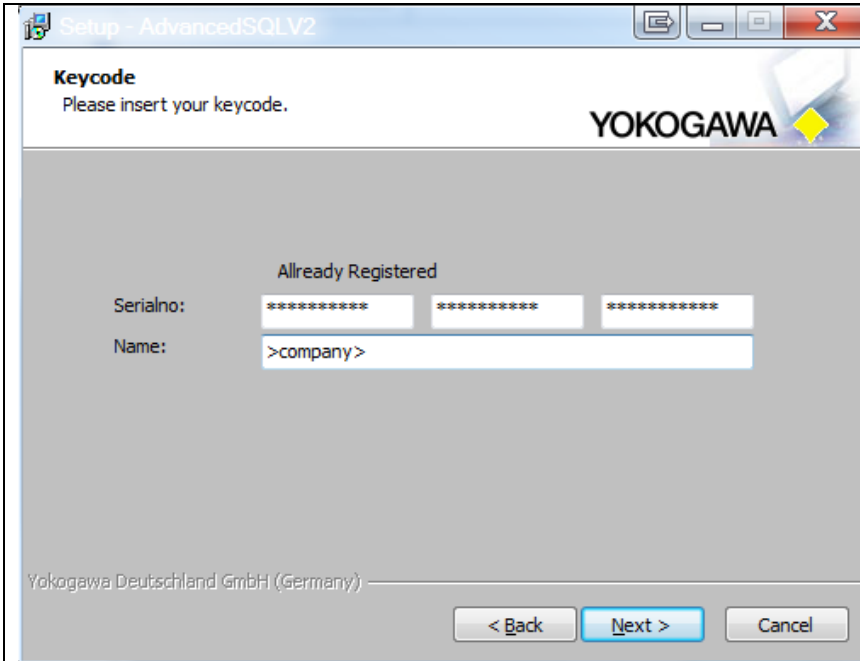
Read the information carefully and confirm it with the button “Next”.



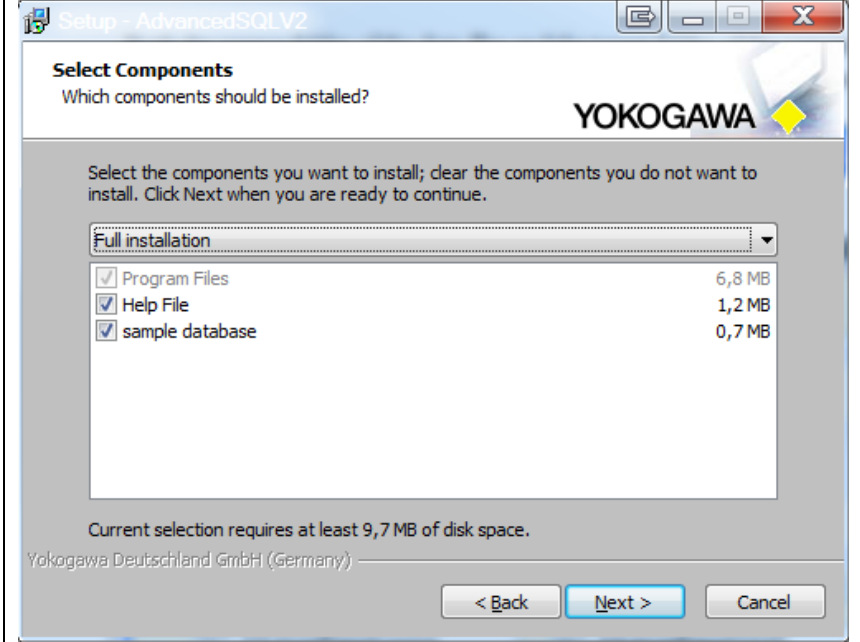
Select the destination location folder for the AdvancedSQLV2 program and conform it to the “Next” button.



Then enter the keycode and name.  
If the keycode is correct then the installation of the program will be activated with the button “Next”.

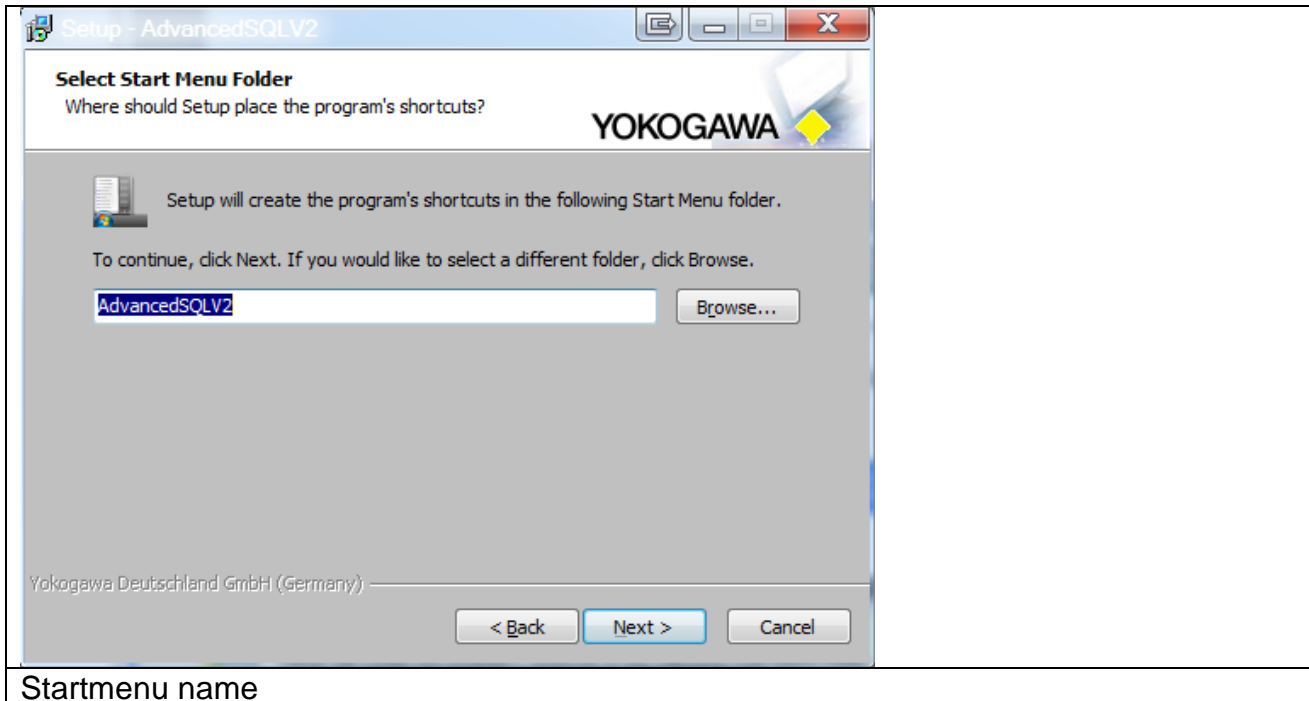


### Registration

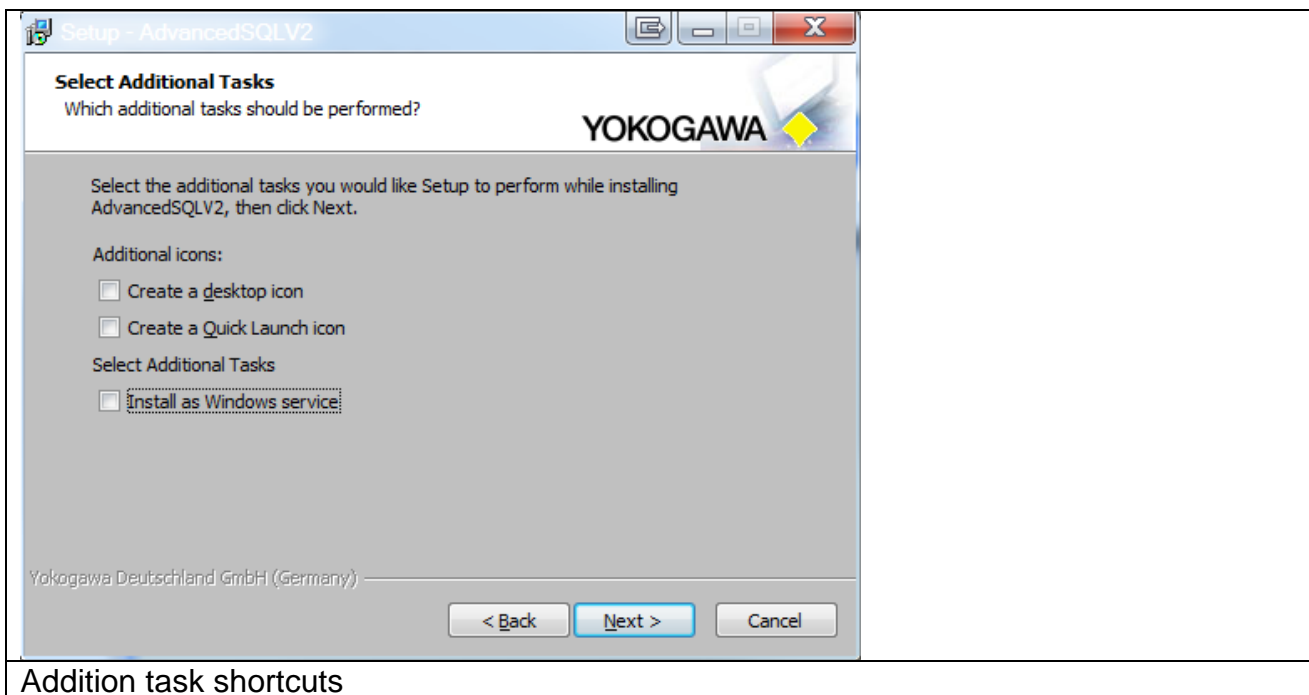


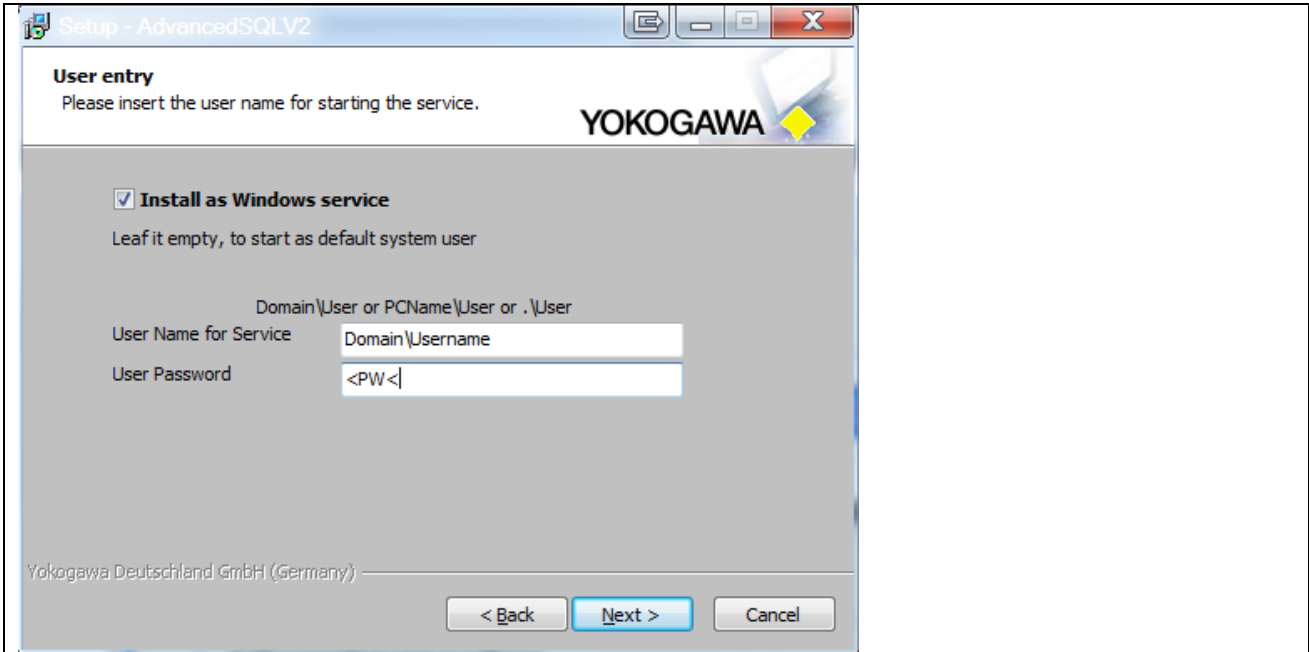
### Select option

Select the installation option and confirm the selection with the button “Next”. Use the full installation for the best result.



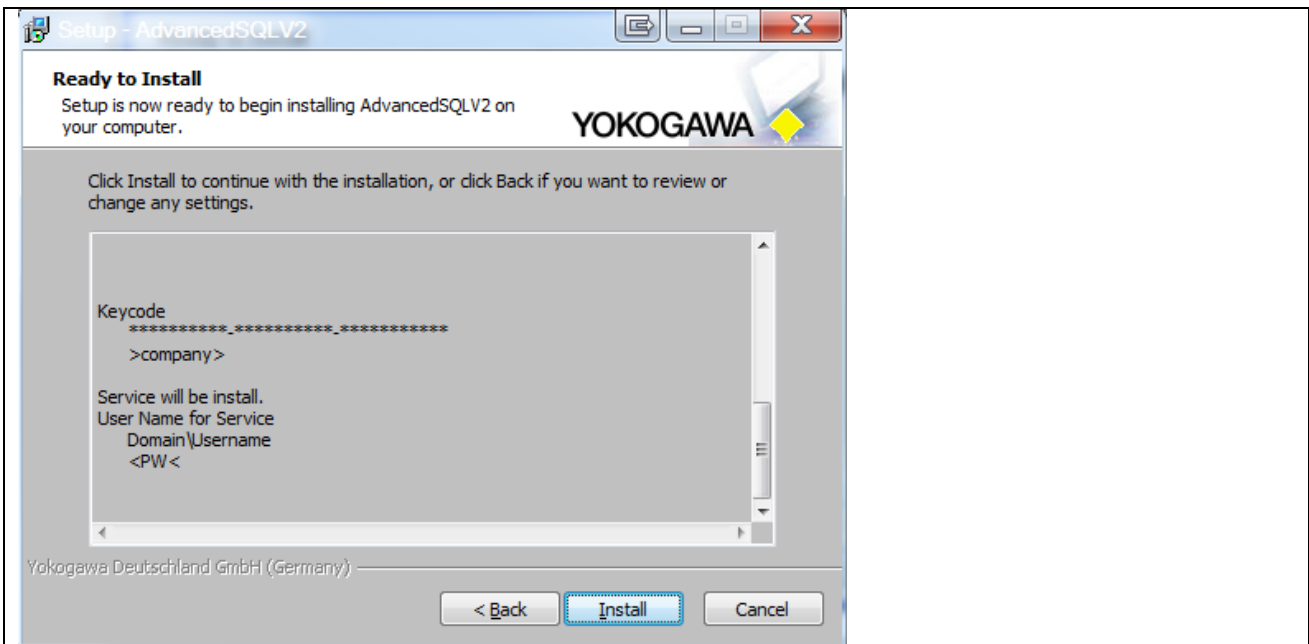
Select the additional task shortcuts activation and confirm it with the “Next” button.





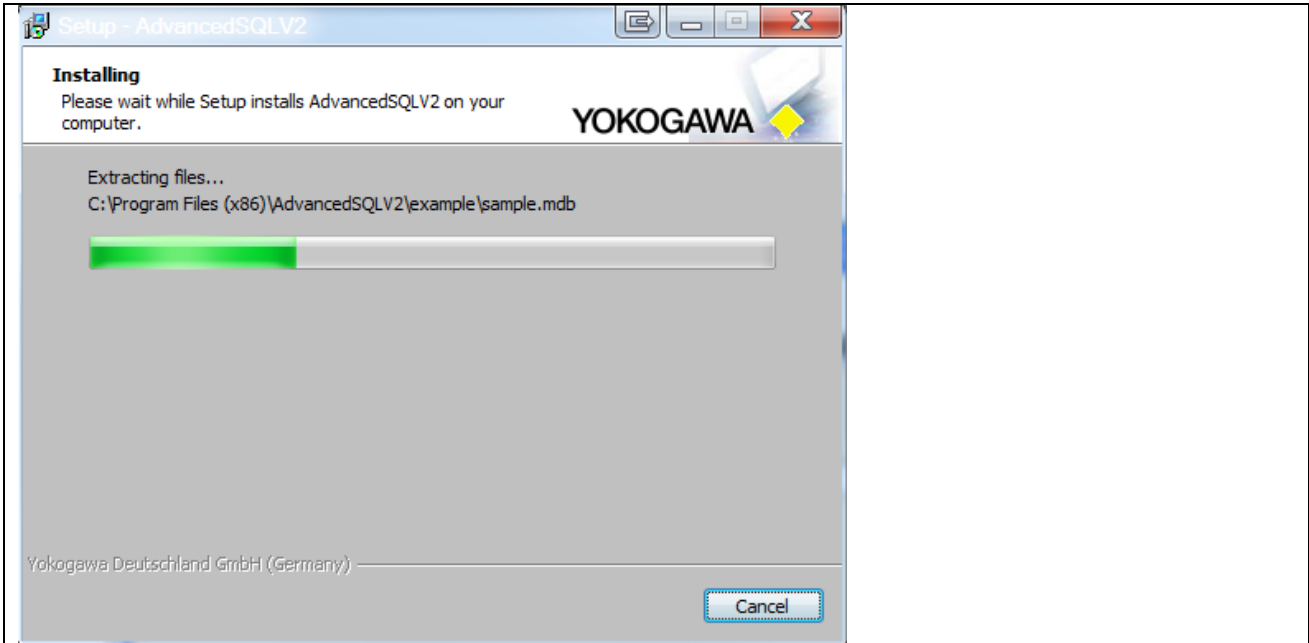
Install the Service

In the following abstract the listing of the selections made is displayed and can be confirmed by the button “Install”.



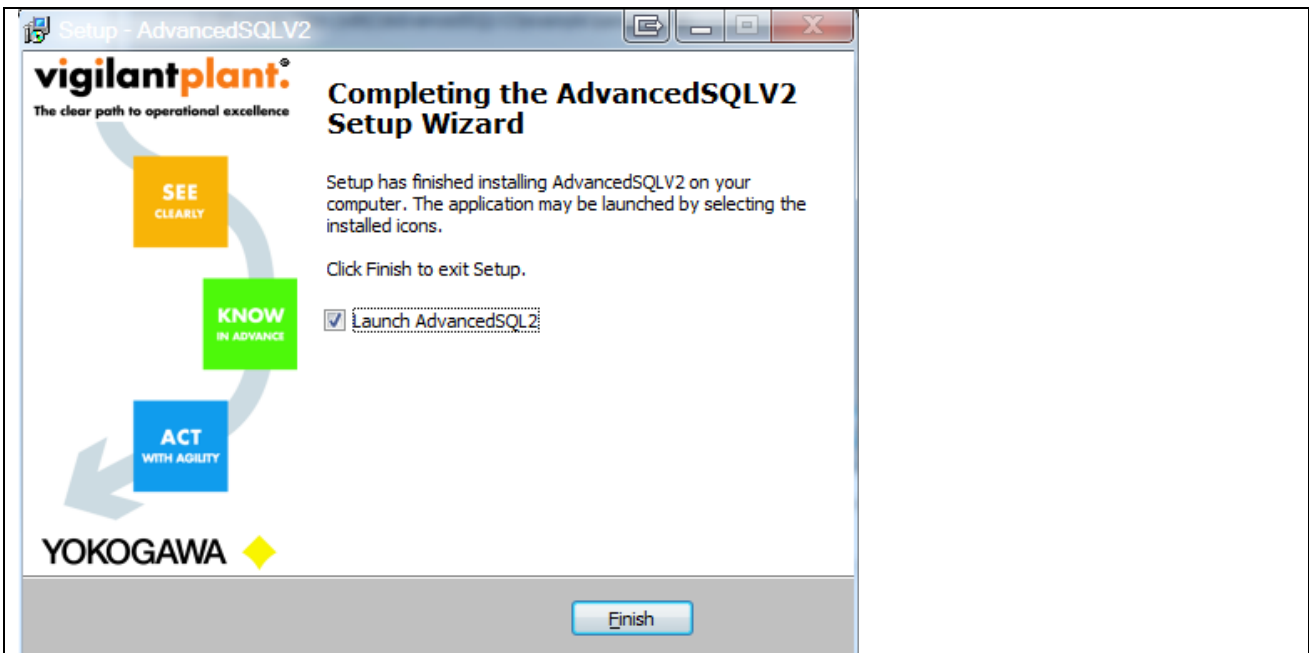
Abstract

The installation of the program starts. With the “Abort” button it is possible to stop the installation.



Installation

After installation the button “Finish” have to be pressed.



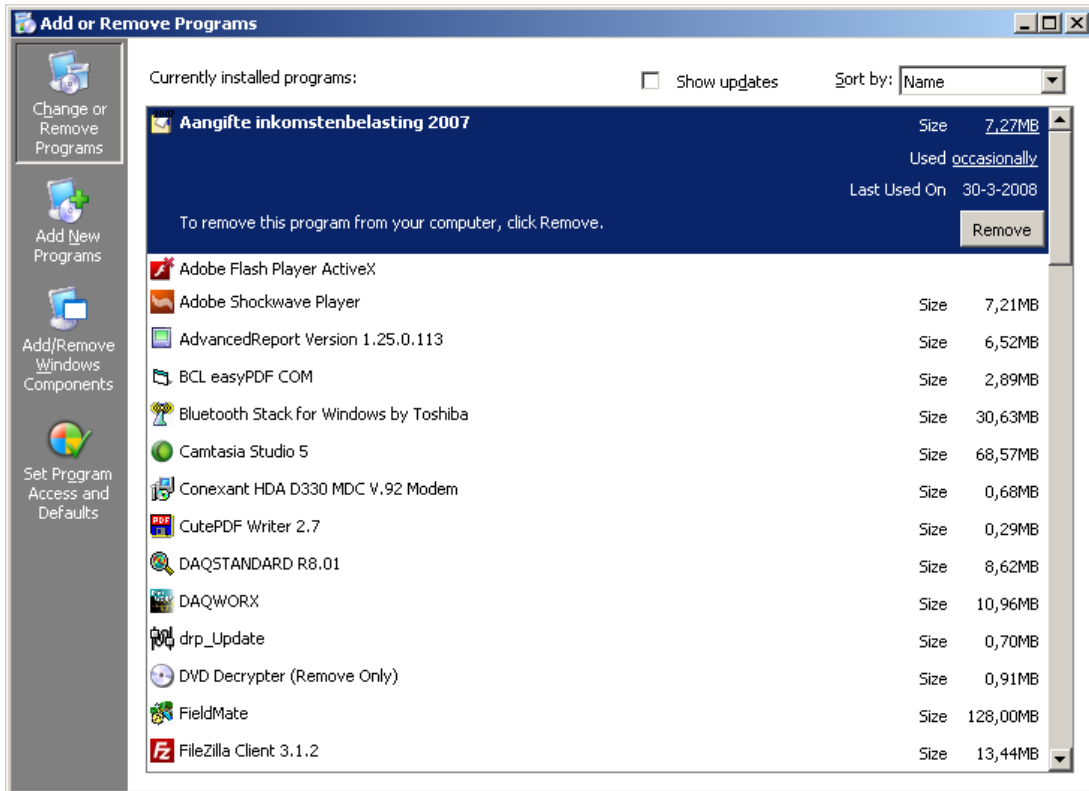
Finish installation

The program can now be started from Start → Programs → AdvancedSQLV2 → AdvancedSQLV2.

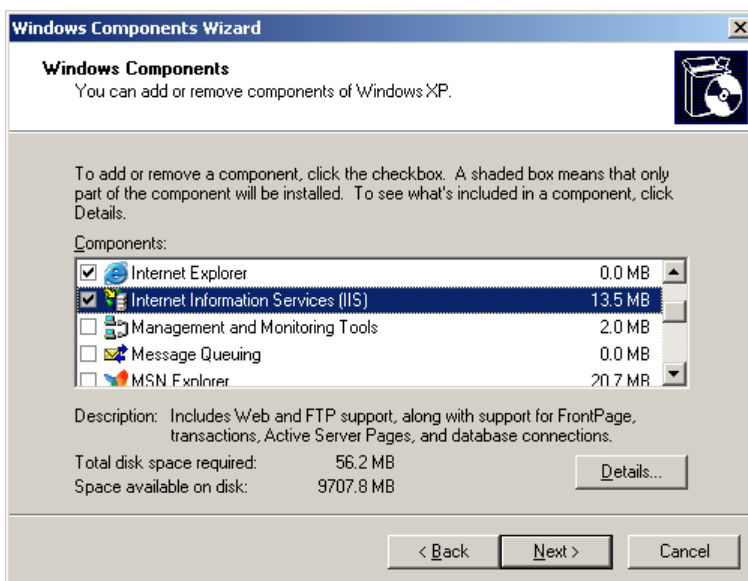
## 8. Windows FTP server installation

### 8.1 Windows XP

- Open the Windows XP control panel via START > SETTINGS > CONTROL PANEL
- Select ADD AND REMOVE PROGRAMS

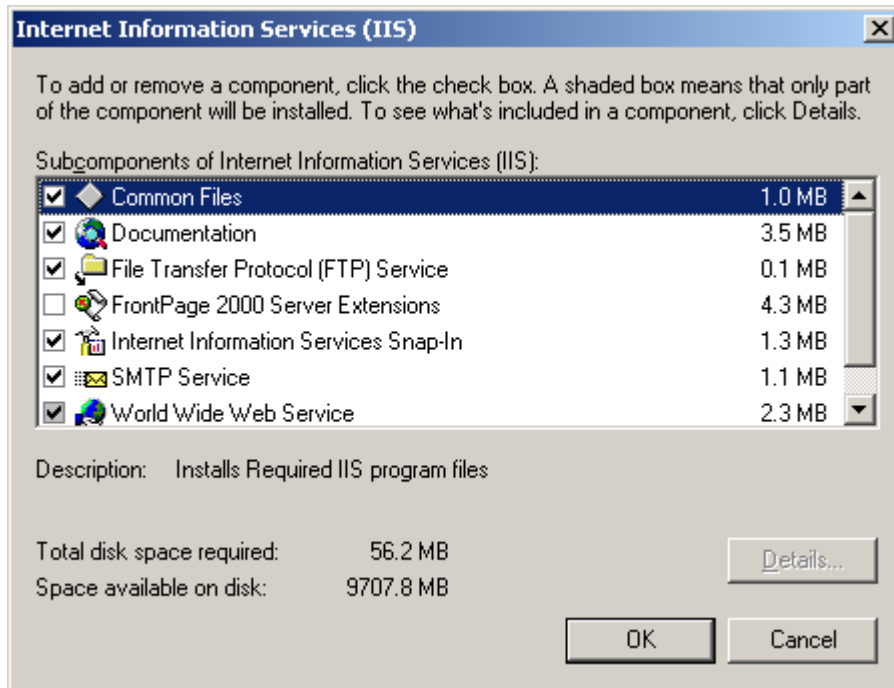


- Select on the left side of the screen the “Add/Remove Windows Components” button

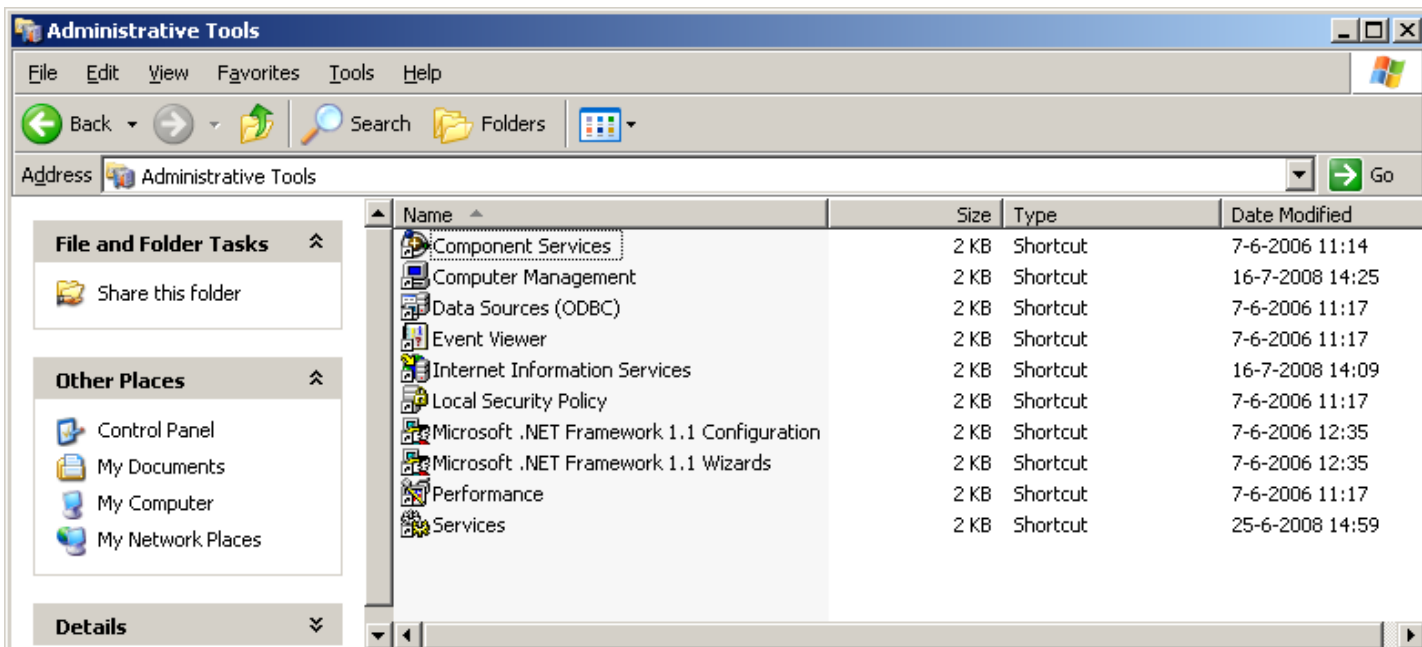


- Select “Internet Information Services (IIS)” and select the DETAILS button. Ensure that the options as shown in the following picture are selected.

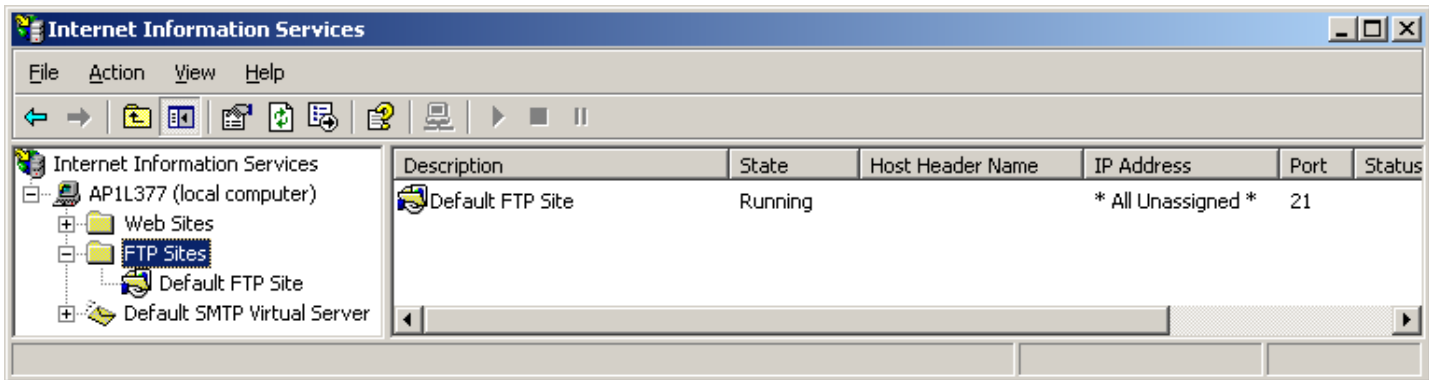




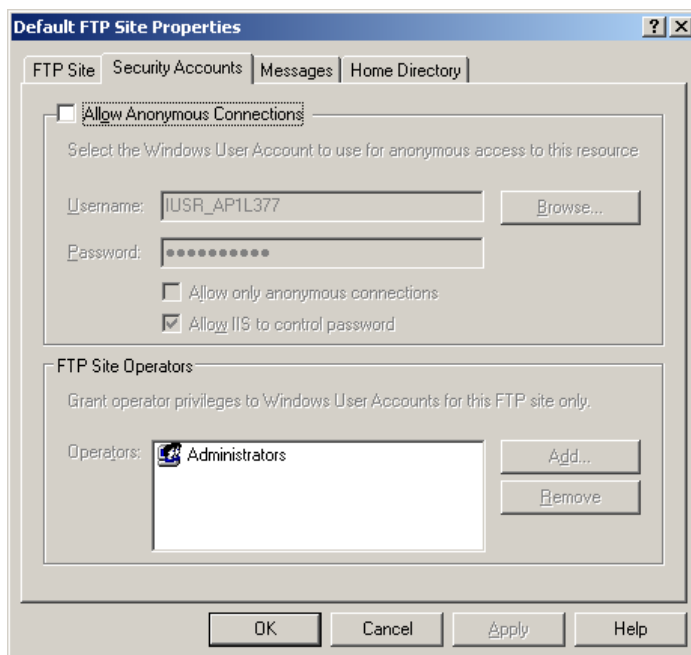
- After confirming your selections by pressing the OK button select NEXT in the previous screen. Now the server software will be installed. For this you do need the official Windows XP CD.
- After completing the installation open the control panel START > SETTINGS > CONTROL PANEL
- Select “Administrative Tools”



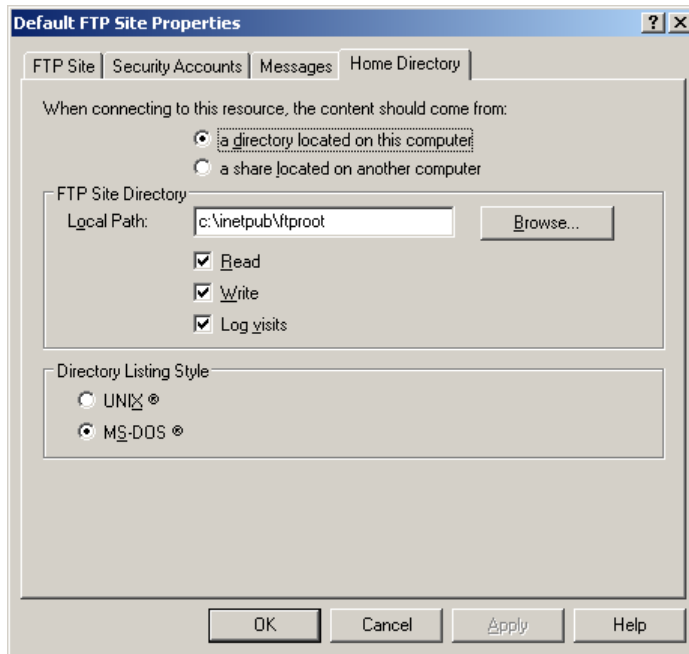
- Double click “Internet Information Services” to see the IIS status. After selecting the folder “FTP Sites” you will see in the right side of the screen the state of the “Default FTP Site” that should “Running”.



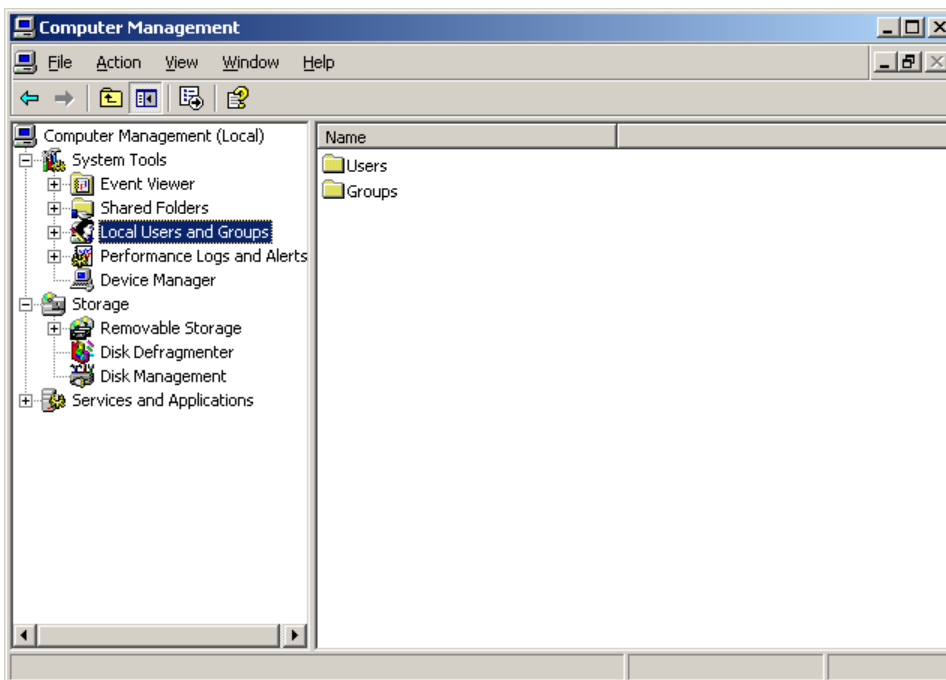
- This default FTP site accepts requests from anybody (mentioned as “anonymous”) without any authentication. This is not good for security and the FTP server should be dedicated for the DX2000. Therefore some additional settings should be made.
- Select in the right side of the window the “Default FTP Site” and right click the mouse. Now select PROPERTIES and the properties window will open.
- In the SECURITY ACCOUNTS tab ensure that the “Allow anonymous connections” is NOT selected. Confirm your action by selecting YES.



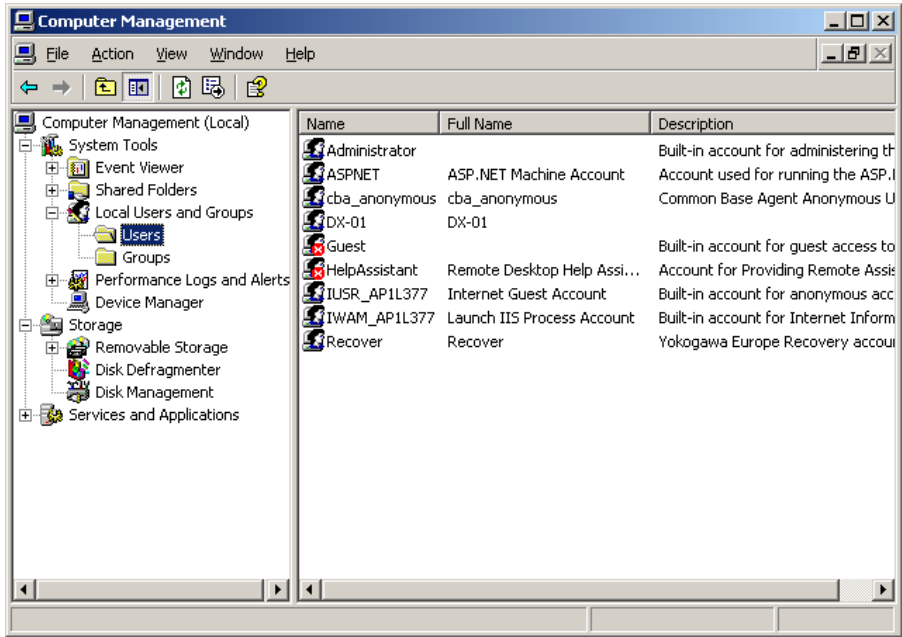
- Now select the HOME DIRECTORY tab. Select here the options “Write” and make sure that “Read” and “Log visits” are already selected. The directory listing style should be “MS-DOS”.



- Confirm your settings by pressing OK and close the ISS status window.
- In the “Administrative Tools” window now double click “Computer Management”.



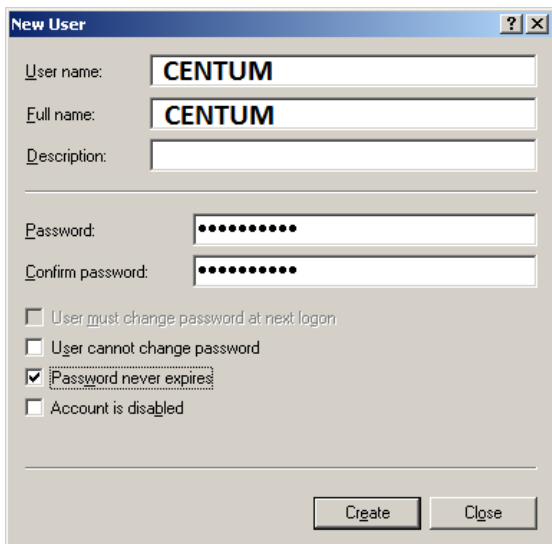
- In this new window double click on “Local Users and Groups” to open the folders Users and Groups. Now select the folder User. In the right window a list of all registered users is shown.



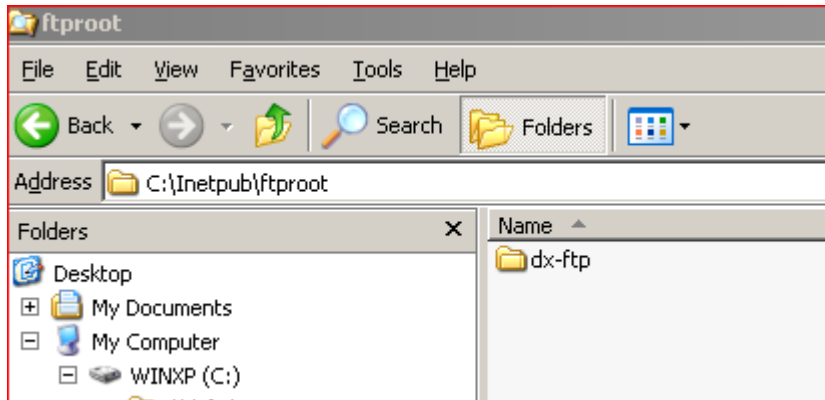
- We do need to register DAQSTATION as a new user. For this press in the toolbar ACTION > NEW USER. Now a new window will open and fill in the following data;

**User name** : CENTUM  
**Full name** : CENTUM  
**Description** :  
**Password** : <Your Password>  
**Confirm password** : <Your Password>

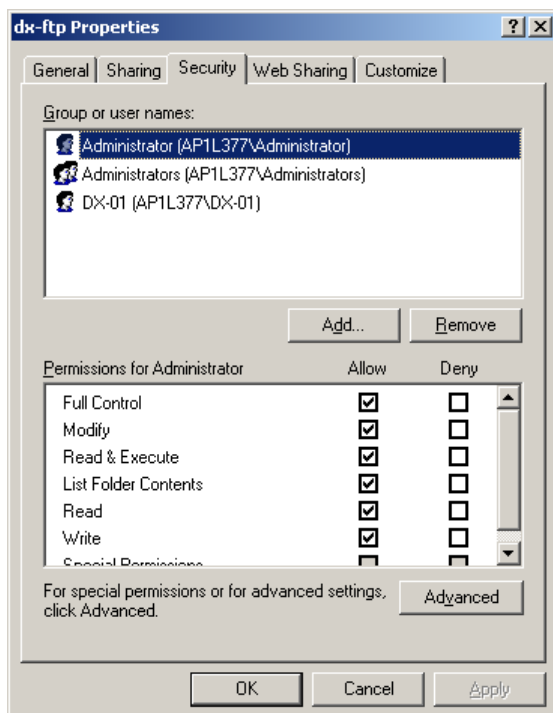
After this remove the check for “User must change password at next login” and do check “Password never expires”.



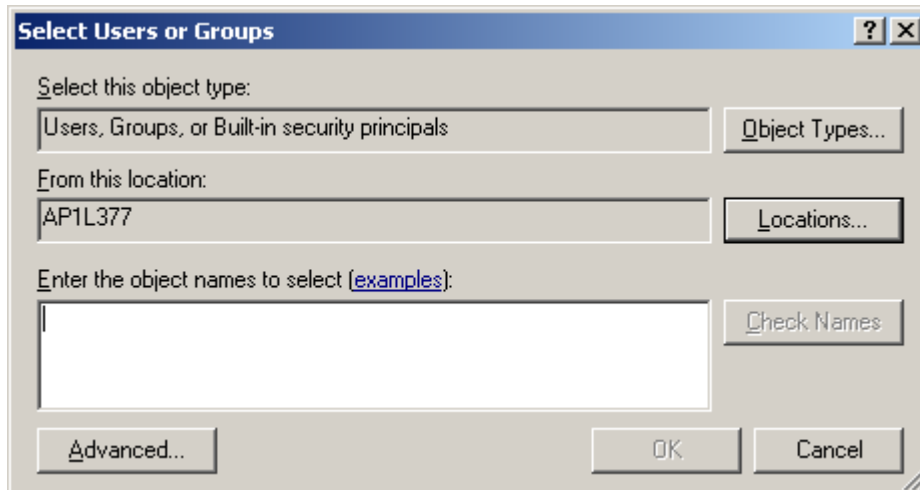
- Now conform your settings by selecting CREATE and after that close the window by pushing the CLOSE button.  
The new user DX-01 will now show up in the list.
- Close all open windows and start windows explorer. In the explorer select the folder C:\inetpub\ftproot. Create in this folder a new folder with the name dx-ftp.



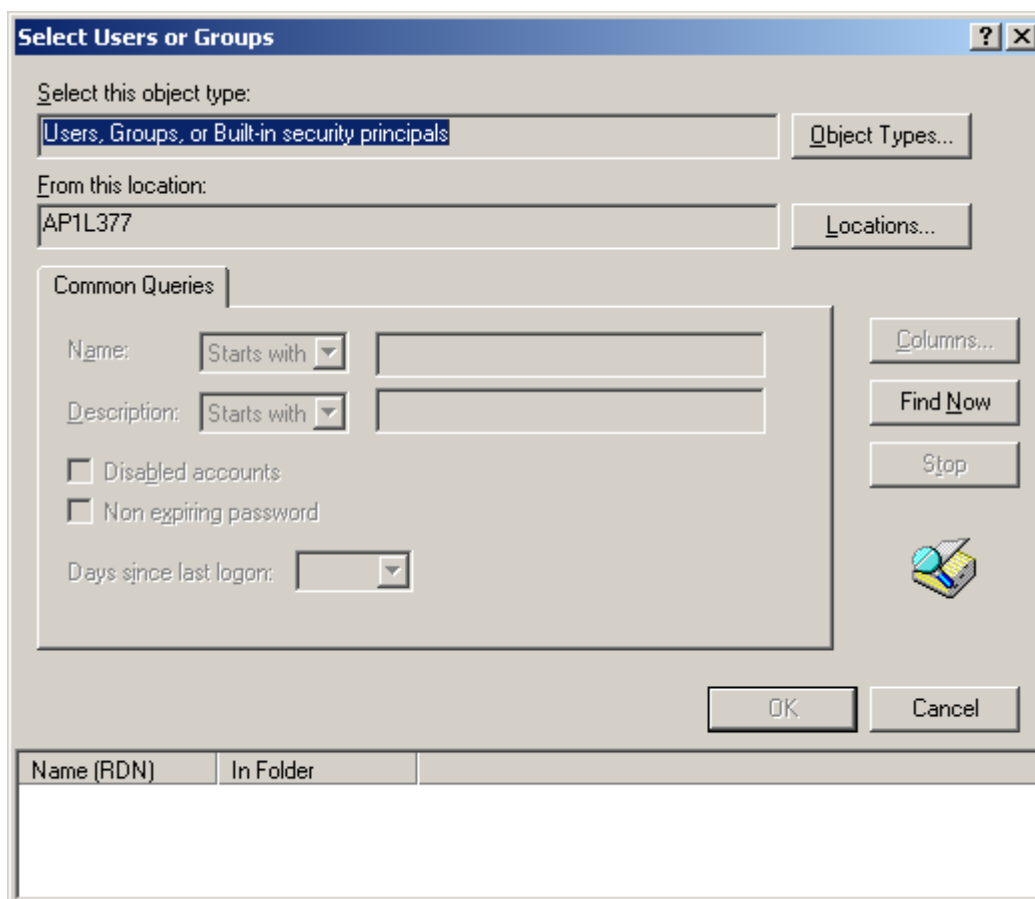
- Now select the new folder and by right clicking it open the properties of the folder. After this select the SECURITY tab.



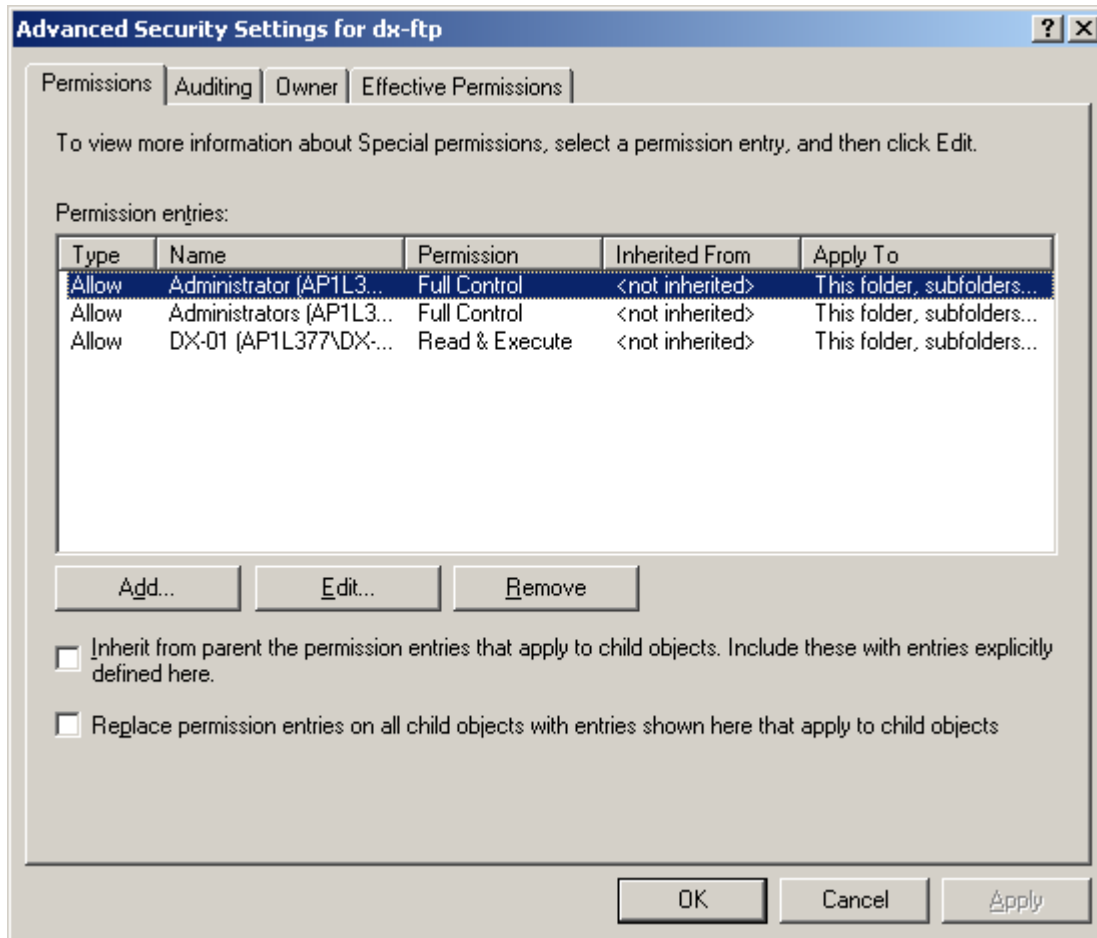
- First remove all users from the shown list. Then click the ADD button. Ensure that in the “From this location” line the name of your computer is mentioned.



- Click the ADVANCED button.



- Click the FIND NOW button. After this a list of users is shown in the lower part of the screen. Here select the new user and select OK. In the previous windows also select OK.
- In the dx-ftp properties window select the ADVANCED button.



- In the PERMISSIONS tab of this window both optional selections must NOT be selected. And confirm your setting by selecting the OK button twice.
- The FTP server software is now installed and ready for use.

## 8.2 Windows 7 FTP server installation

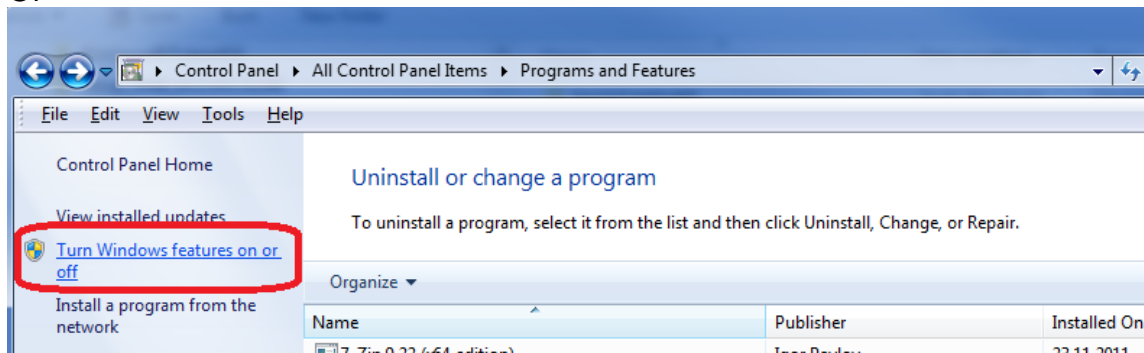
- Open the Windows 7 control panel via START > SETTINGS > CONTROL PANEL
- Select PROGRAMS



- Select on the left side of the screen the “Add/Remove Windows Components” button

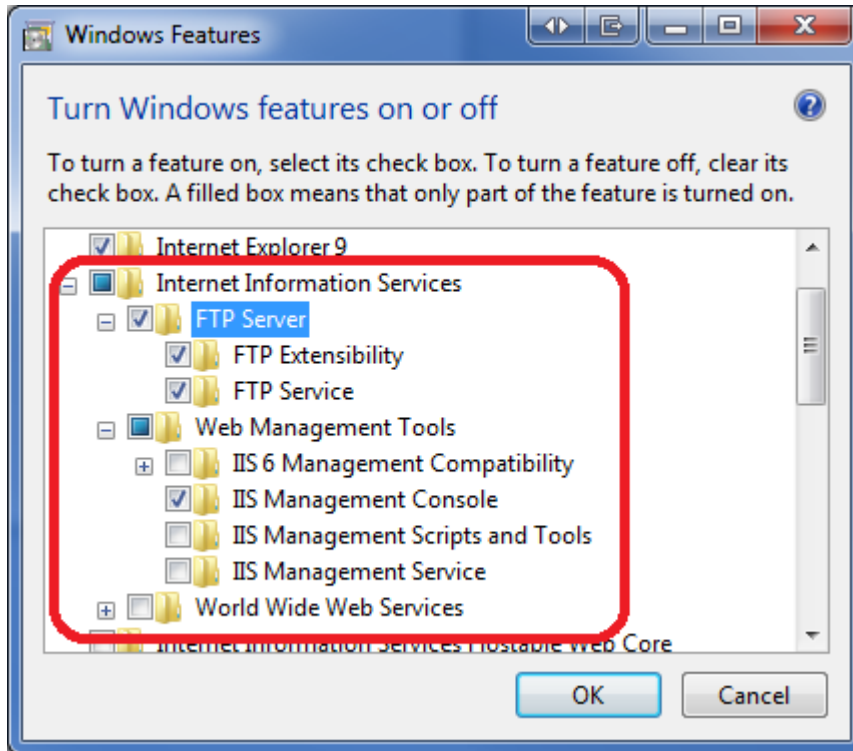


Or

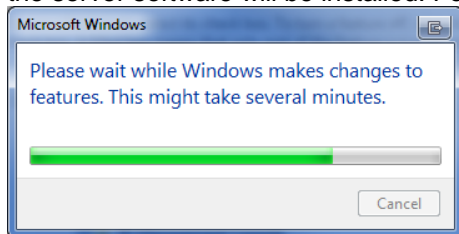


- Select “Internet Information Services (IIS)” and select the DETAILS button. Ensure that the options as shown in the following picture are selected.

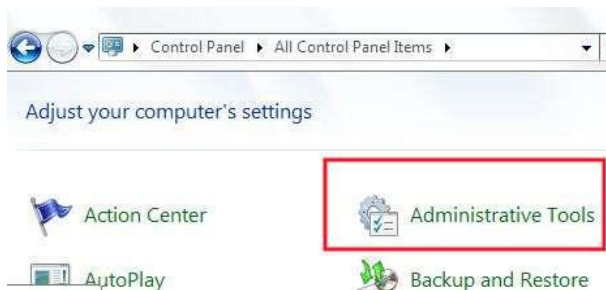


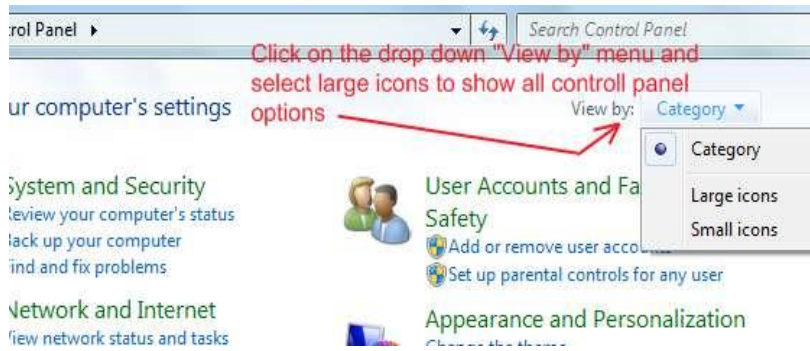


- After confirming your selections by pressing the OK button select NEXT in the previous screen. Now the server software will be installed. For this you do need sometimes the official Windows 7 CD.



- After completing the installation open the control panel START > SETTINGS > CONTROL PANEL
- Open the Control Panel on your system. And click on **Administrative Tools**. In case you are unable to locate Administrative Tools in the control panel, you may need to switch to 'View all control panel items' from the "View by" menu at the top right in your control panel window.

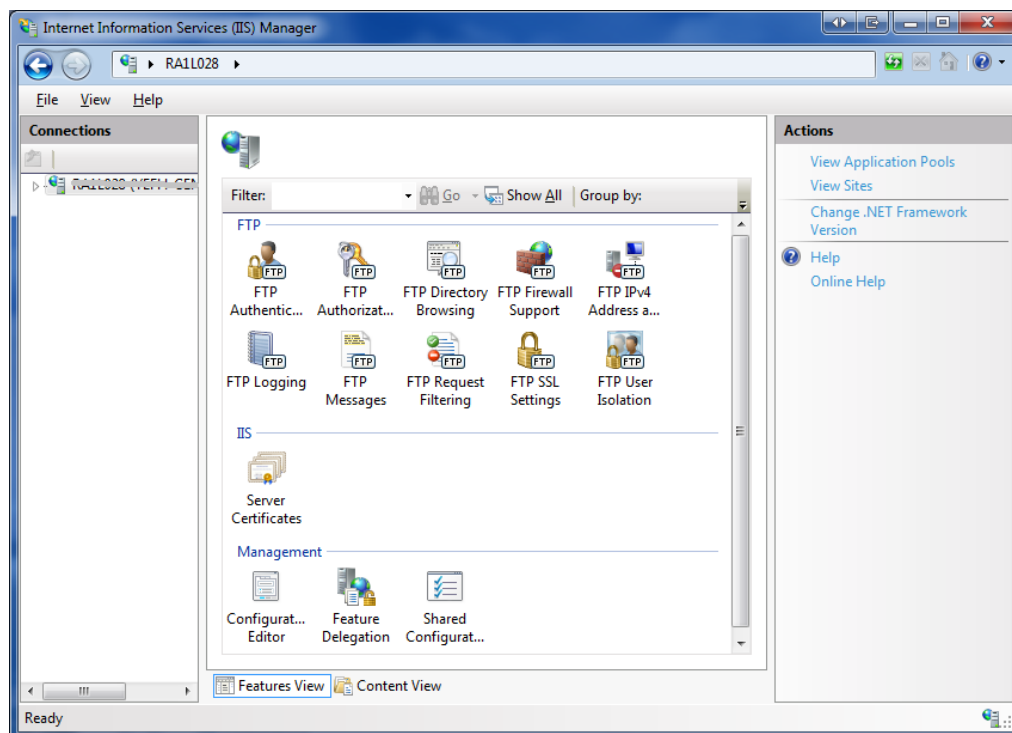




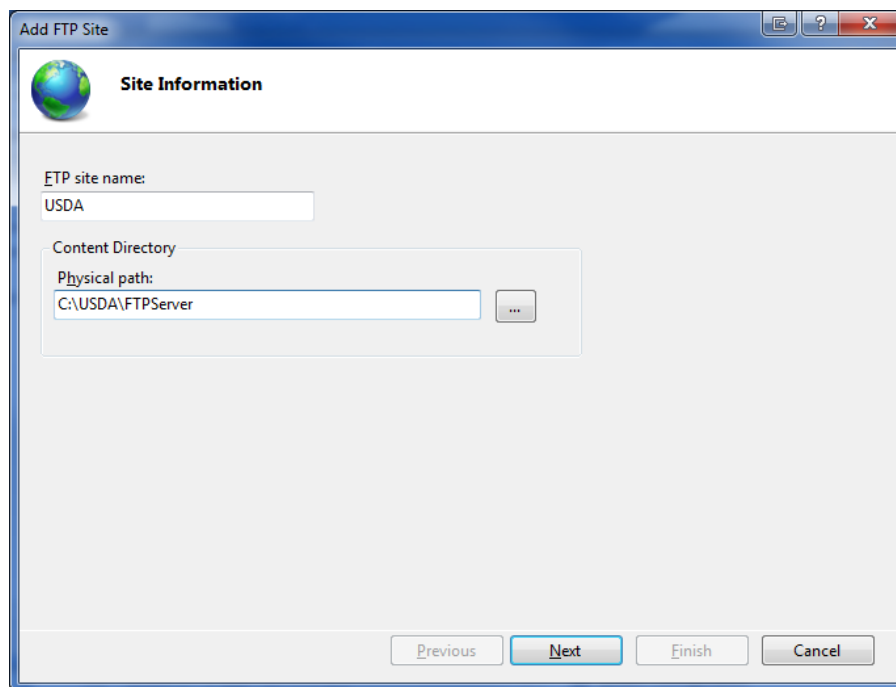
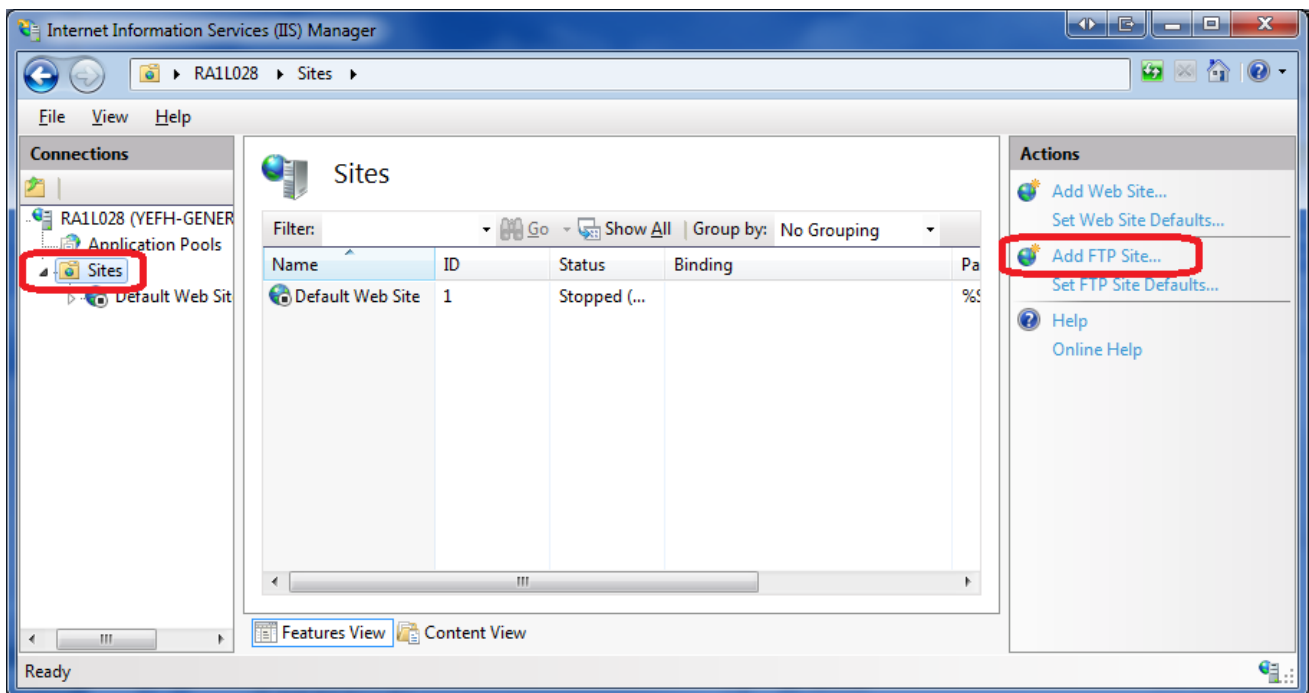
- In the Administrative Tools windows, locate "**Internet Information Services Manager**" and click on it. You can now see a new window with lot of settings / options in it categorised separately under FTP and IIS.

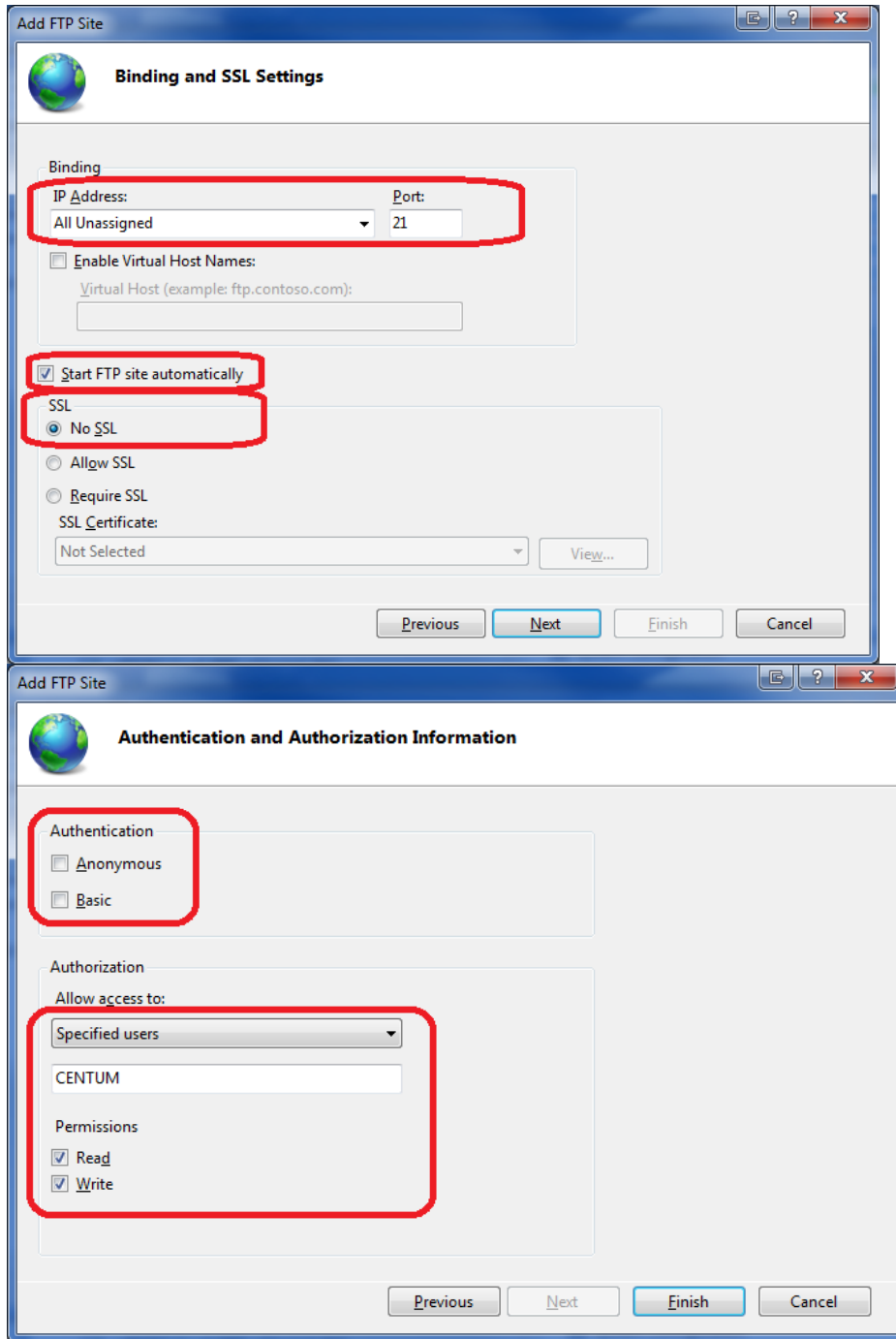


- Double click "Internet Information Services" to see the IIS status. After selecting the folder "FTP Sites" you will see in the right side of the screen the state of the "Default FTP Site" that should "Running".

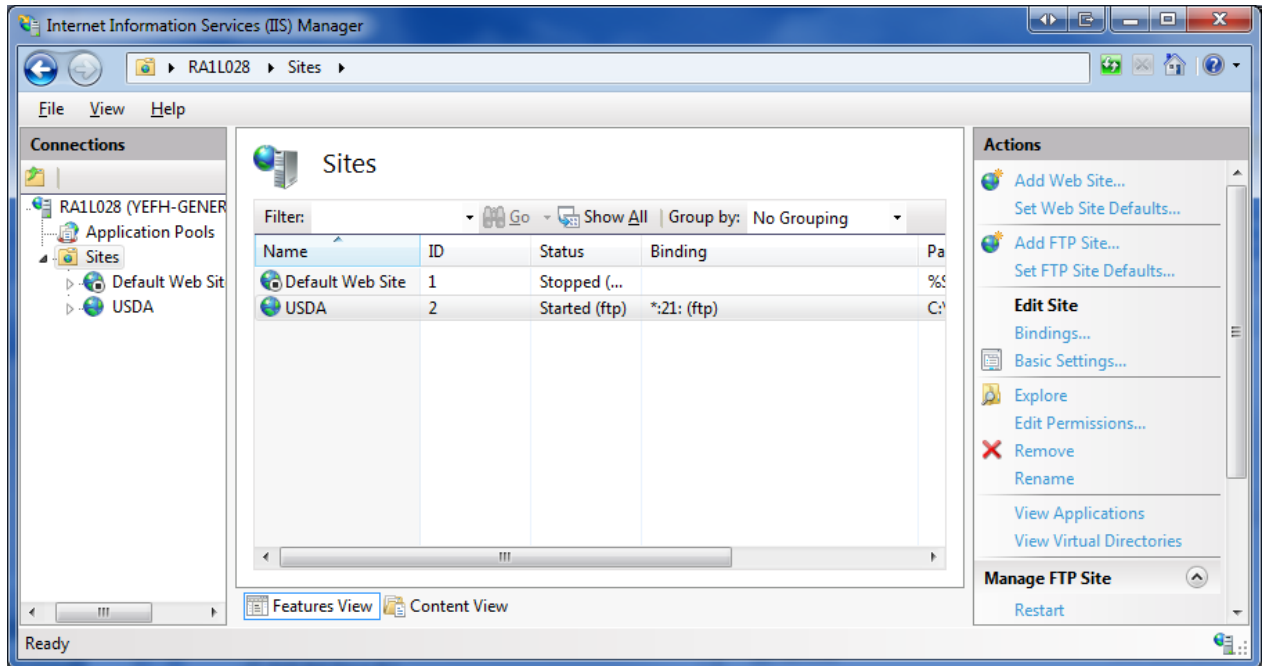


- To create a FTP site please start the FTP wizard.

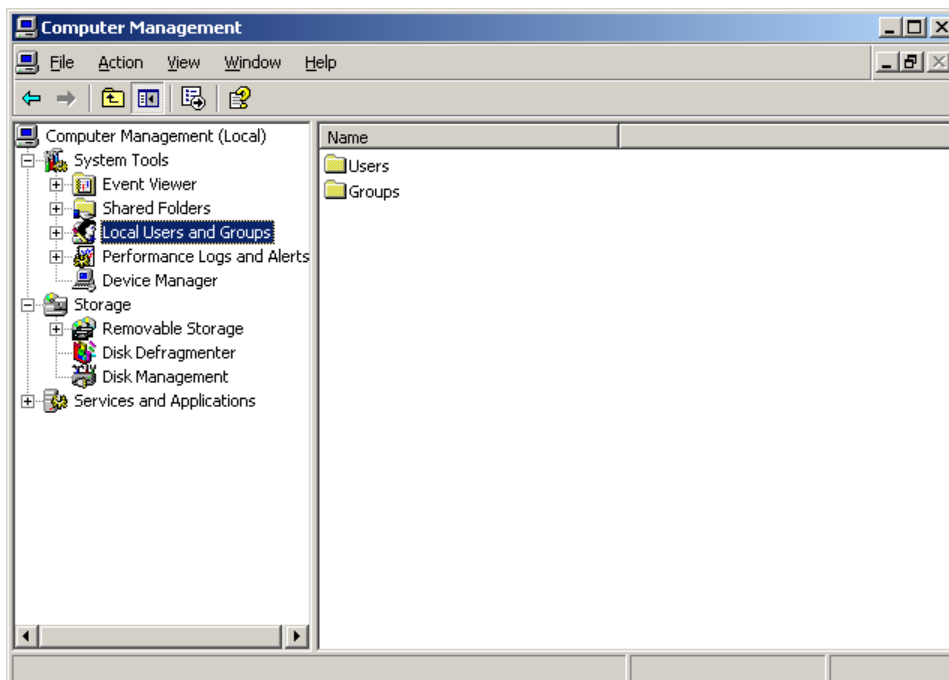




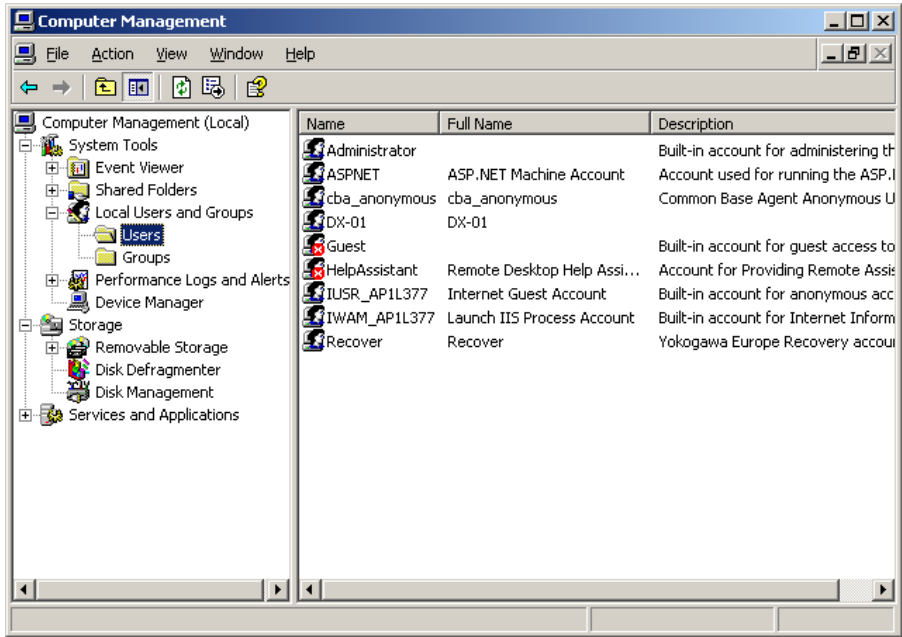
- Confirm your settings by pressing Finish and close the ISS status window.



- In the “Administrative Tools” window now double click “Computer Management”.



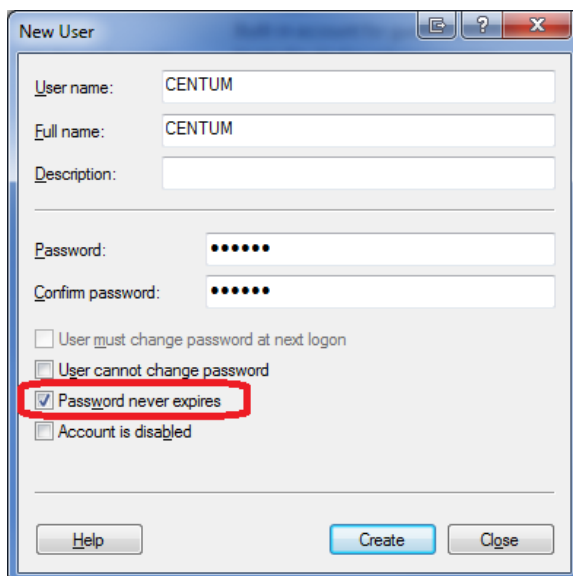
- In this new window double click on “Local Users and Groups” to open the folders Users and Groups. Now select the folder User. In the right window a list of all registered users is shown.



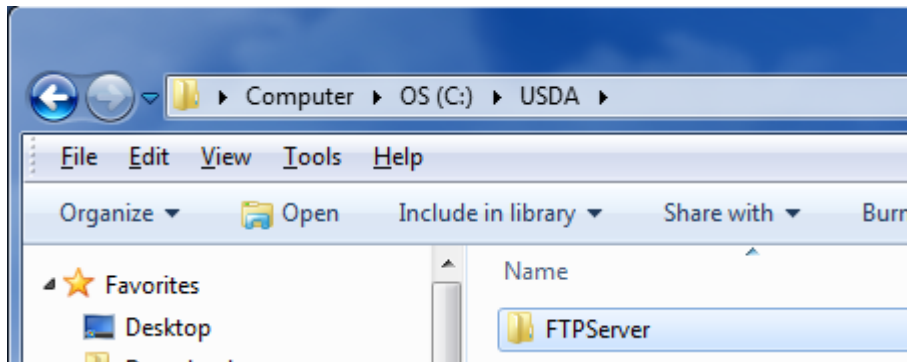
- We do need to register DAQSTATION as a new user. For this press in the toolbar ACTION > NEW USER. Now a new window will open and fill in the following data;

**User name** : CENTUM  
**Full name** : CENTUM  
**Description** :  
**Password** : <Your Password>  
**Confirm password** : <Your Password>

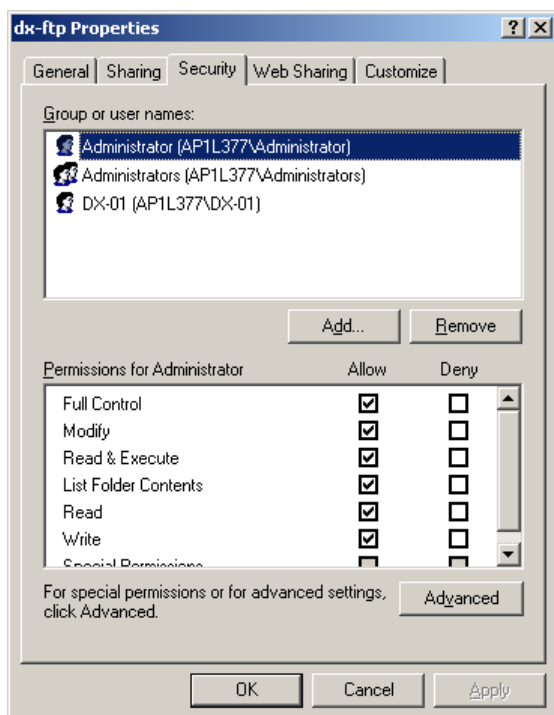
After this remove the check for “User must change password at next login” and do check “Password never expires”.



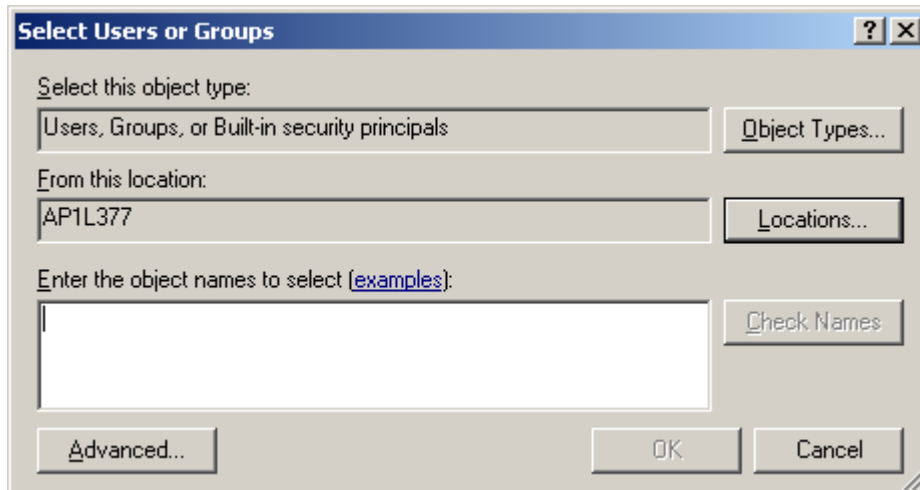
- Now confirm your settings by selecting CREATE and after that close the window by pushing the CLOSE button. The new user CENTUM will now show up in the list.
- Close all open windows and start windows explorer. In the explorer select the folder C:\USDA\FTPServer. Create in this folder a new folder with the name dx-ftp.



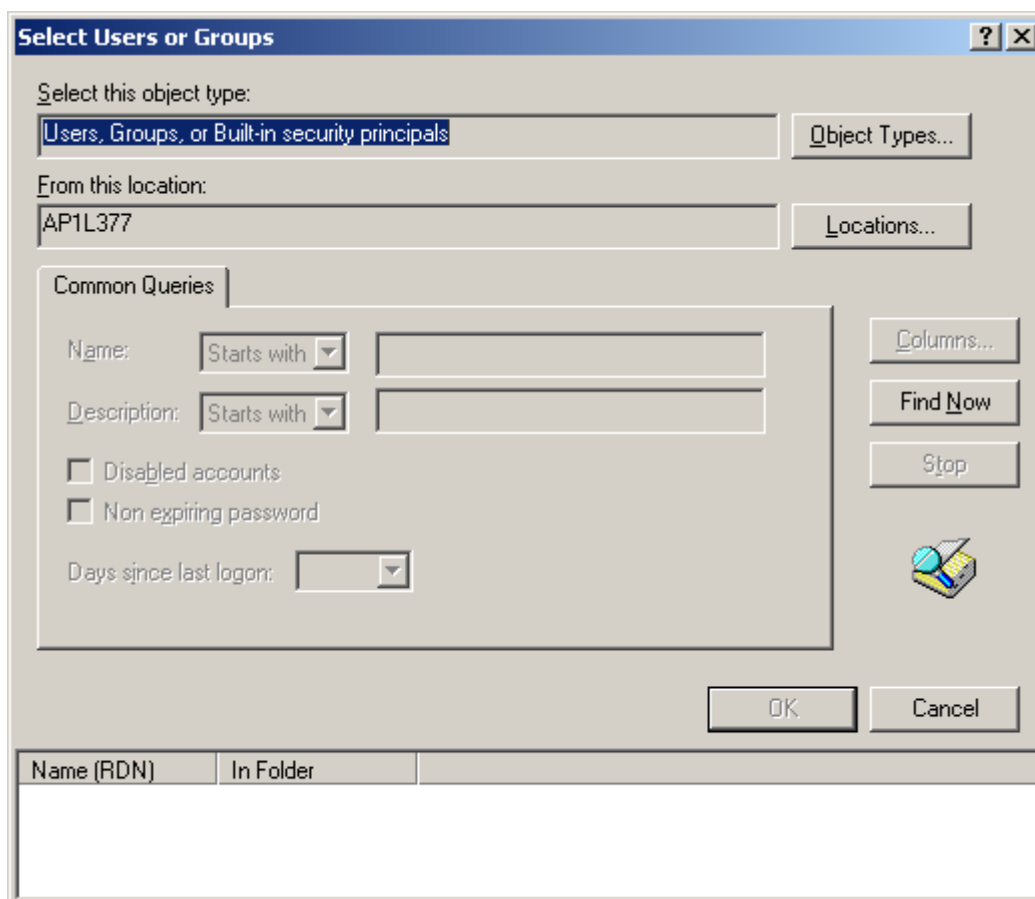
- Now select the new folder and by right clicking it open the properties of the folder. After this select the SECURITY tab.



- First remove all users from the shown list. Then click the ADD button. Ensure that in the "From this location" line the name of your computer is mentioned.

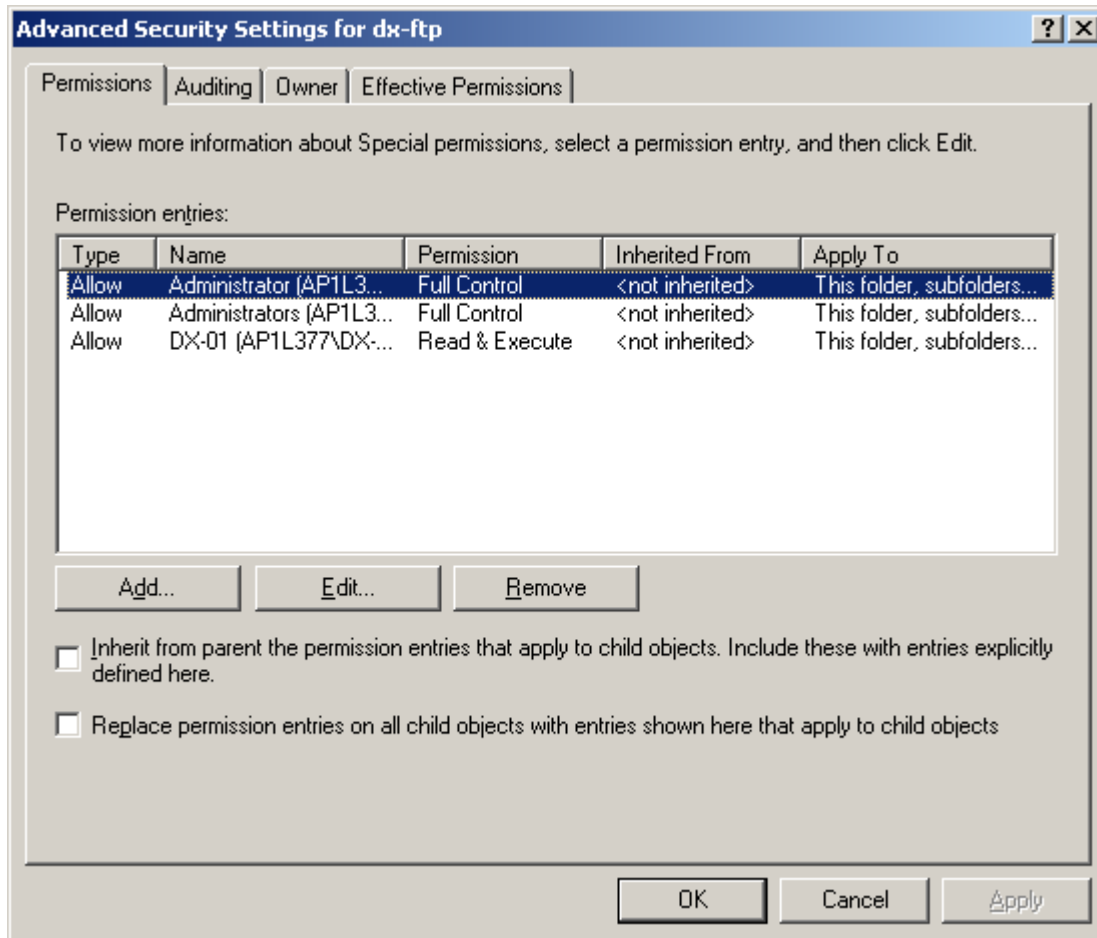


- Click the ADVANCED button.

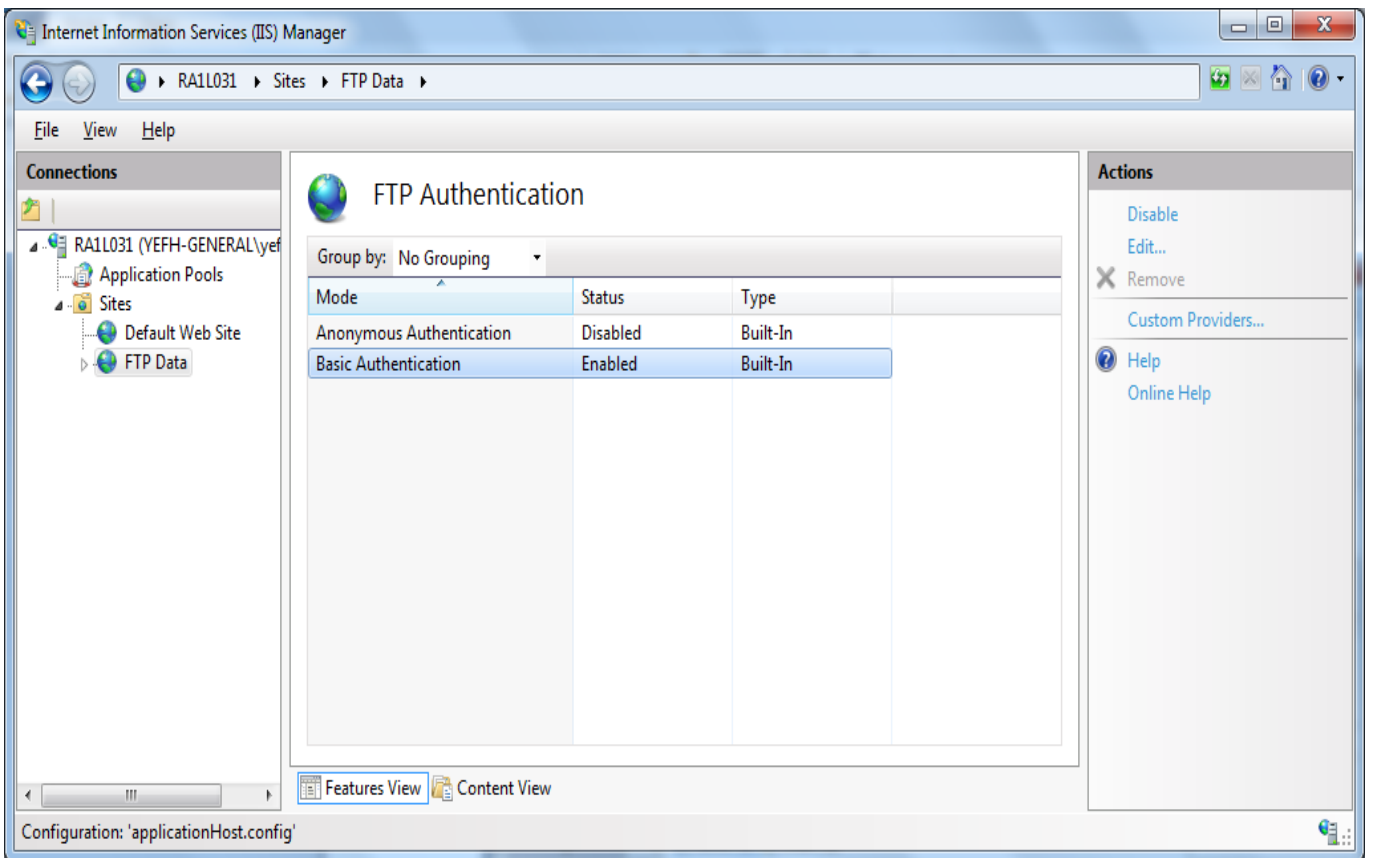
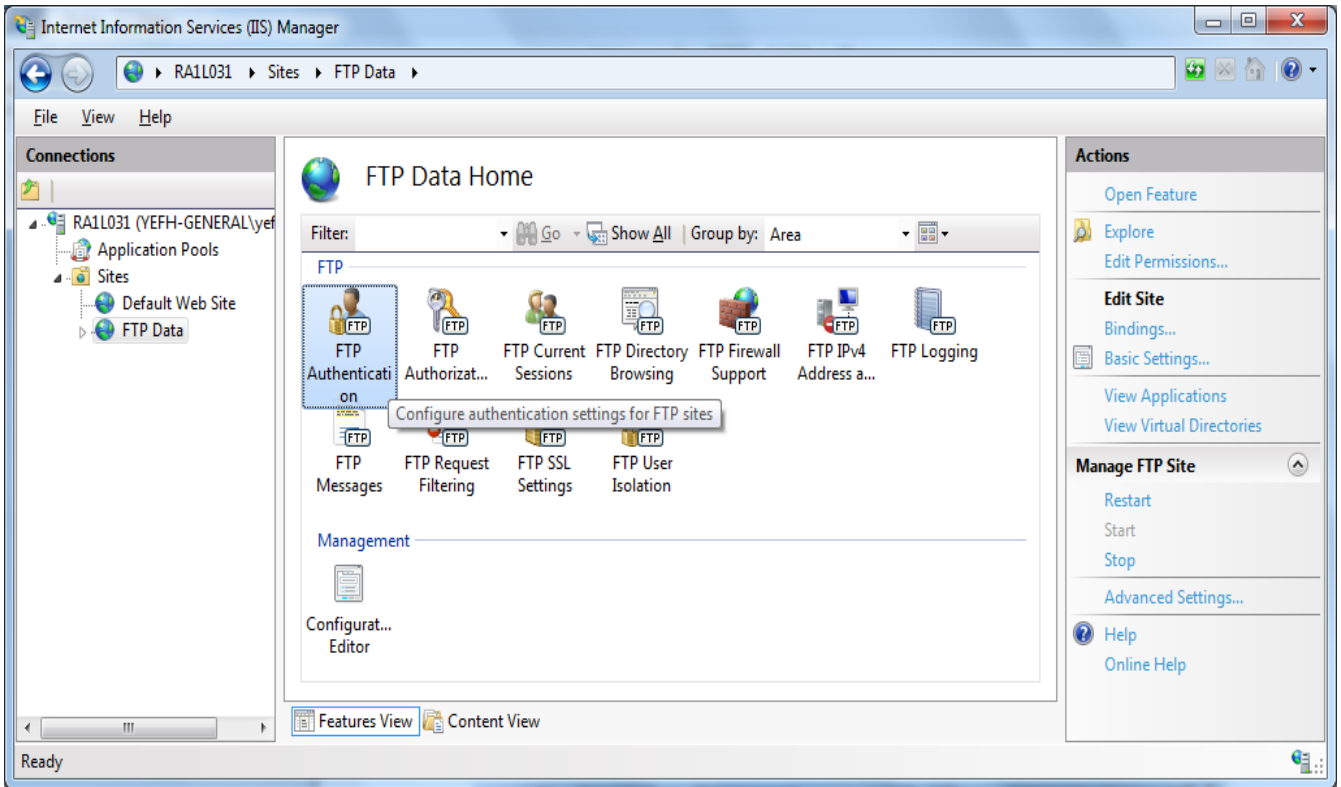


- Click the FIND NOW button. After this a list of users is shown in the lower part of the screen. Here select the new user and select OK. In the previous windows also select OK.
- In the dx-ftp properties window select the ADVANCED button.





- In the PERMISSIONS tab of this window both optional selections must NOT be selected. And confirm your setting by selecting the OK button twice.
- The FTP server software is now installed and ready for use.



### 8.3 Test FTP Function / Testing the FTP Transfer

You can test whether a test file can be transferred from the DX to an FTP server.

◇ Press FUNC and select FTPtest

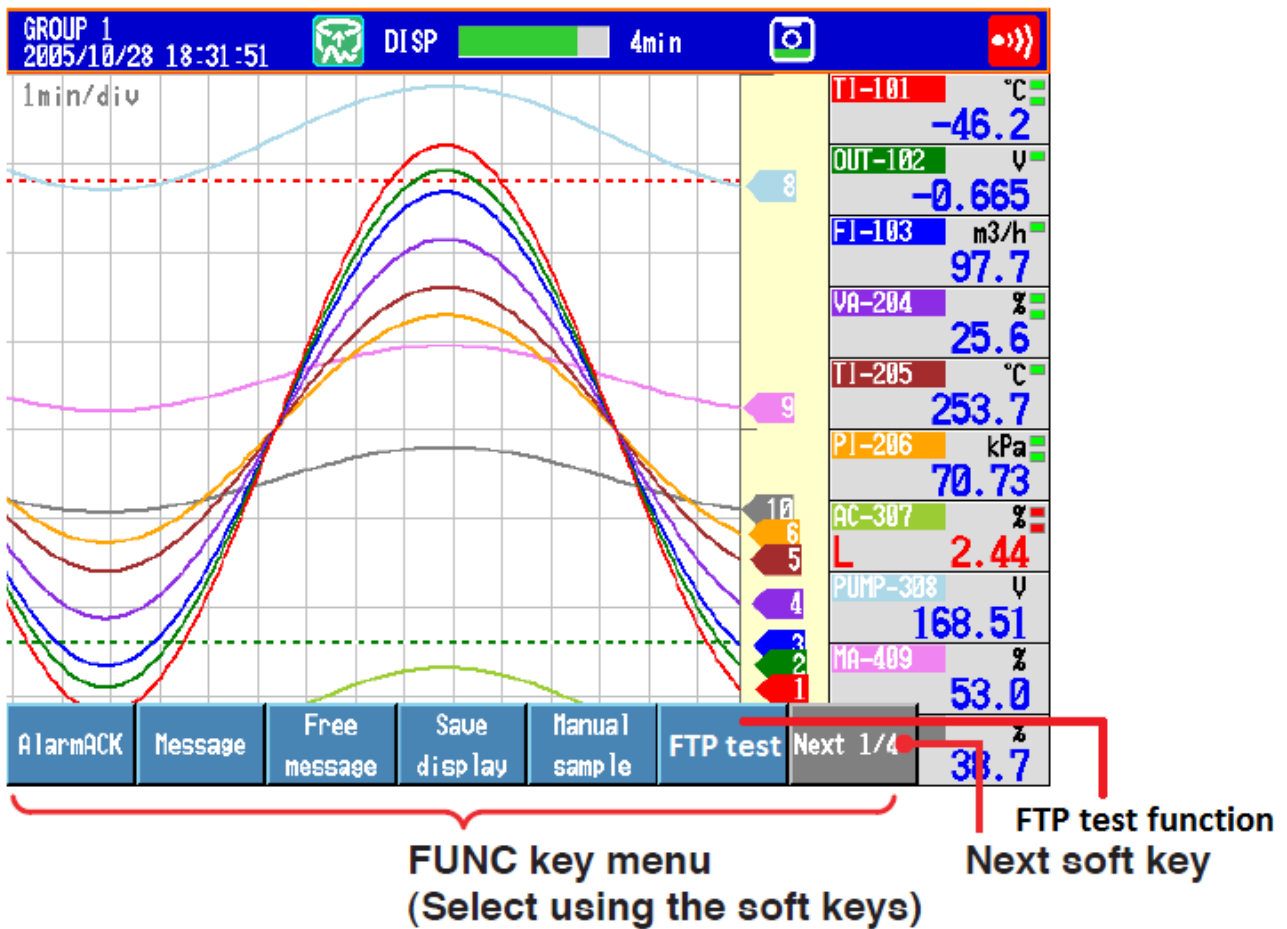
Items to check before performing this test

- Connect the Ethernet cable correctly. For the connection procedure, see section 1.3.
- Check that the Ethernet interface settings are correct. For the procedure, see section

Checking the results of the FTP test

- When an FTP test is executed, a test file named FTP\_TEST.TXT is transferred to the directory indicated by the initial path at the FTP destination specified in this section.
- The result of the FTP test can be confirmed by displaying the FTP log

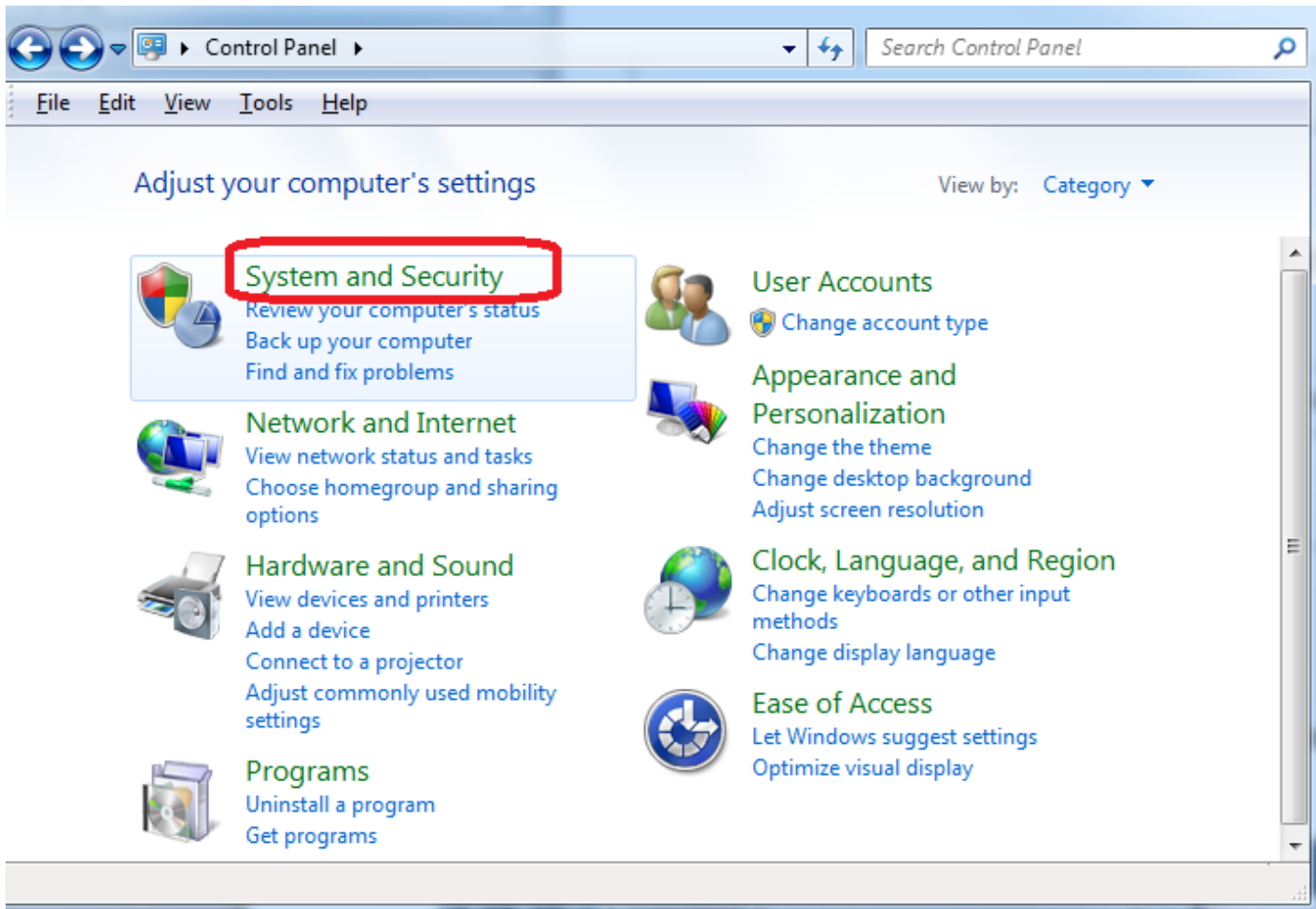
Press FUNC to display the FUNC key menu at the bottom of the screen. Press the Next soft key to switch the menu. Press the desired soft key.



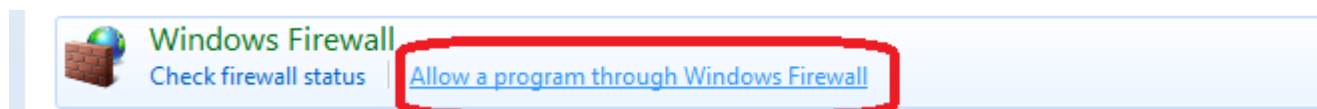
## 9. Windows Firewall

### 9.1 Windows 7

- Open the Windows control panel via START > SETTINGS > CONTROL PANEL
- Select **System and Security**



- Select on the left side of the screen the “Allow a program through Windows firewall” button



Or

### Allow programs to communicate through Windows Firewall

To add, change, or remove allowed programs and ports, click Change settings.

[What are the risks of allowing a program to communicate?](#)

[Change settings](#)

Allowed programs and features:

| Name   | Domain                              | Home/Work (Pri...                   | Public                              | Group Policy |
|--|-------------------------------------|-------------------------------------|-------------------------------------|--------------|
| <input type="checkbox"/> Ditto                                     | <input type="checkbox"/>            | <input type="checkbox"/>            | <input checked="" type="checkbox"/> | No           |
| <input type="checkbox"/> Ditto                                     | <input type="checkbox"/>            | <input checked="" type="checkbox"/> | <input type="checkbox"/>            | No           |
| <input checked="" type="checkbox"/> File and Printer Sharing       | <input checked="" type="checkbox"/> | <input checked="" type="checkbox"/> | <input checked="" type="checkbox"/> | No           |
| <input checked="" type="checkbox"/> FTP                            | <input checked="" type="checkbox"/> | <input checked="" type="checkbox"/> | <input checked="" type="checkbox"/> | No           |
| <input type="checkbox"/> HomeGroup                                 | <input type="checkbox"/>            | <input type="checkbox"/>            | <input type="checkbox"/>            | No           |
| <input type="checkbox"/> iSCSI Service                             | <input type="checkbox"/>            | <input type="checkbox"/>            | <input type="checkbox"/>            | No           |
| <input type="checkbox"/> Key Management Service                    | <input type="checkbox"/>            | <input type="checkbox"/>            | <input type="checkbox"/>            | No           |
| <input checked="" type="checkbox"/> LANDesk Message Service        | <input checked="" type="checkbox"/> | <input type="checkbox"/>            | <input type="checkbox"/>            | No           |
| <input checked="" type="checkbox"/> LANDesk Ping Discovery Service | <input checked="" type="checkbox"/> | <input type="checkbox"/>            | <input type="checkbox"/>            | No           |
| <input checked="" type="checkbox"/> LANDesk Remote Control Agent   | <input checked="" type="checkbox"/> | <input type="checkbox"/>            | <input type="checkbox"/>            | No           |
| <input checked="" type="checkbox"/> LANDesk Targeted Multicast     | <input checked="" type="checkbox"/> | <input type="checkbox"/>            | <input type="checkbox"/>            | No           |

[Details...](#) [Remove](#)

[Allow another program...](#)

[OK](#) [Cancel](#)

**Edit a Port**

Use these settings to open a port through Windows Firewall. Choose a meaningful name you'll remember. To find the port number and protocol, consult the documentation for the program or service you want to use.

Name:

Port number:

Protocol:  TCP  UDP

[What are the risks of opening a port?](#)

You can choose which network location types this port is open on.

[Network location types...](#) [OK](#) [Cancel](#)

## 10. Run Program as NT- Service

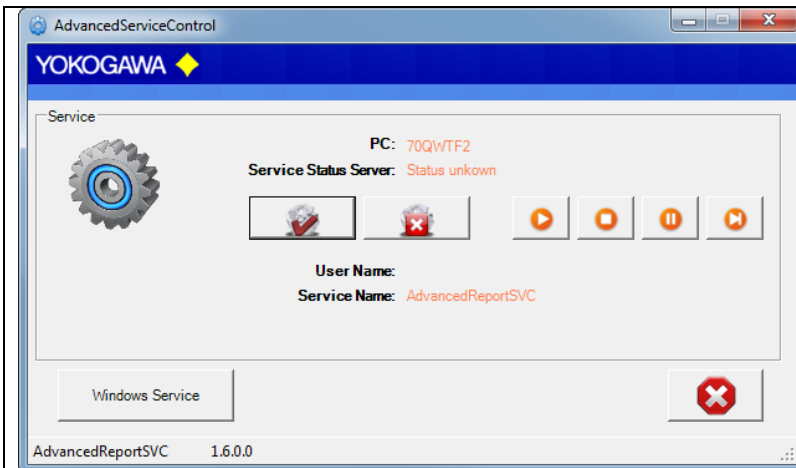
It is possible to start the program as a service. With this it is not necessary to login on the computer. It starts automatically with Windows.

**Note:**

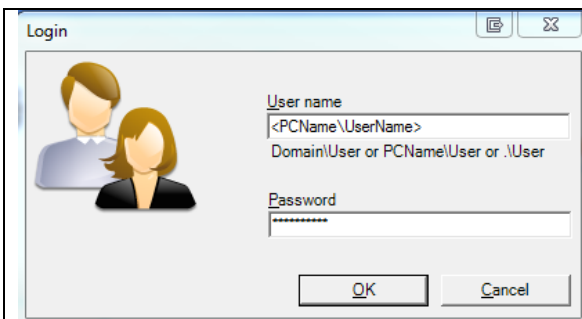
Also the FTP Server has to run as a Service!

### 10.1 Installation

Change to the Settings register. The Button „Install“ add the service „AdvancedSQLV2Svc“ into the control panel. The Button „Start“ activate the Service. The service start as „System“ User in Automatic Mode. By changing the settings, it will be activate with a new folder scan.

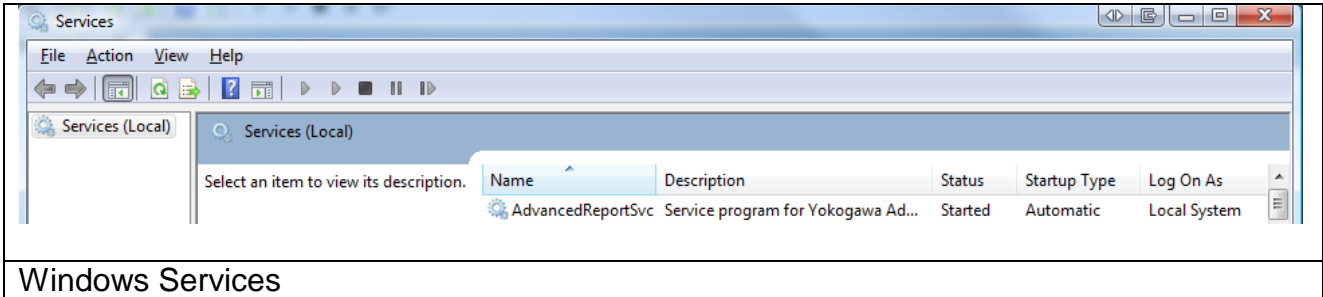


Install Service in AdvancedReport



Install the Service as User

The messages are send to the Windows event logger (Control Panel → Administrative Tools → Events).

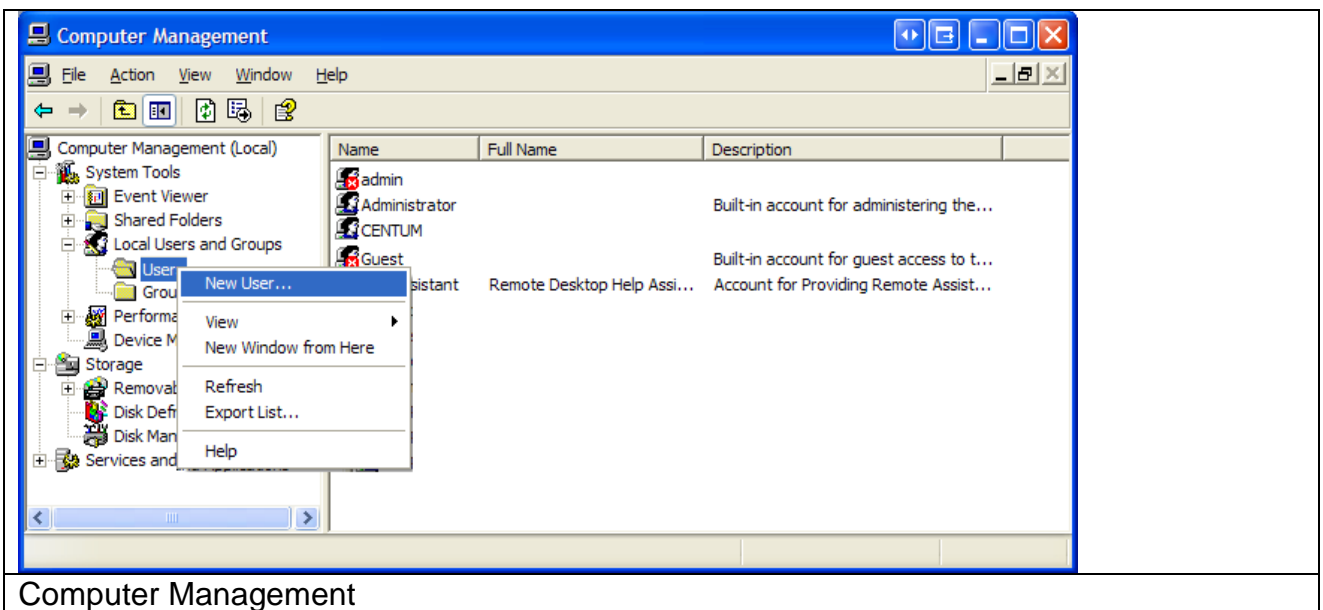


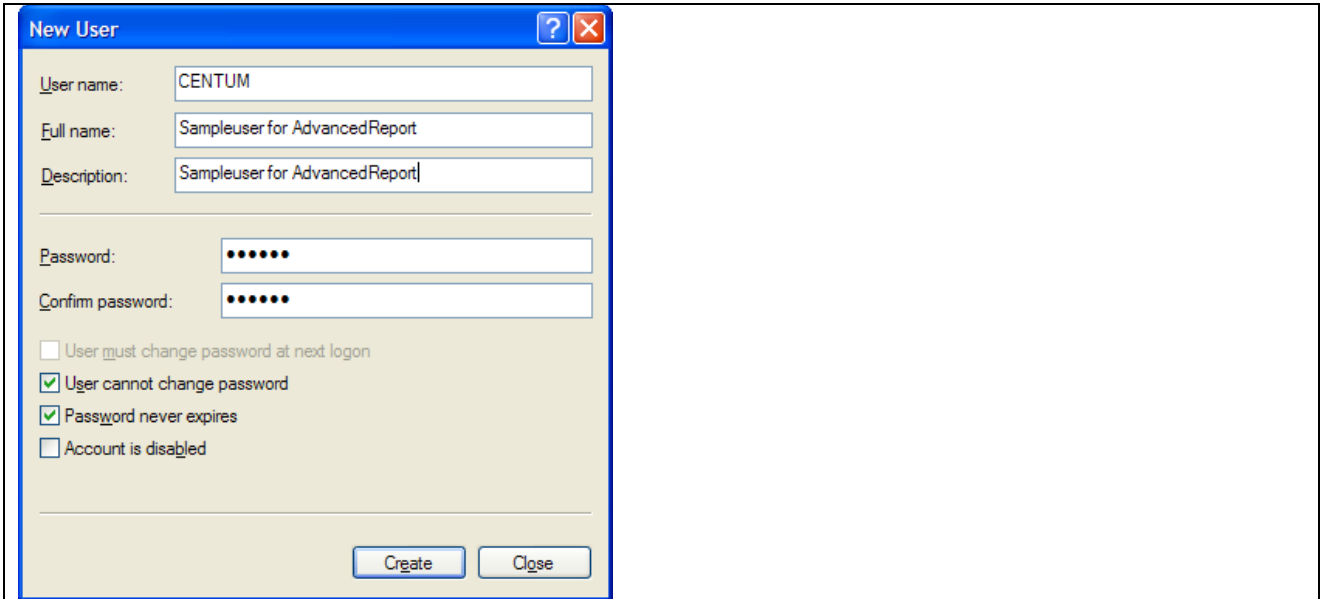
## 10.2 Installation possible changes

Start the program RunAsService.cmd to install the Service.

### 10.2.1 create a new lokal user:

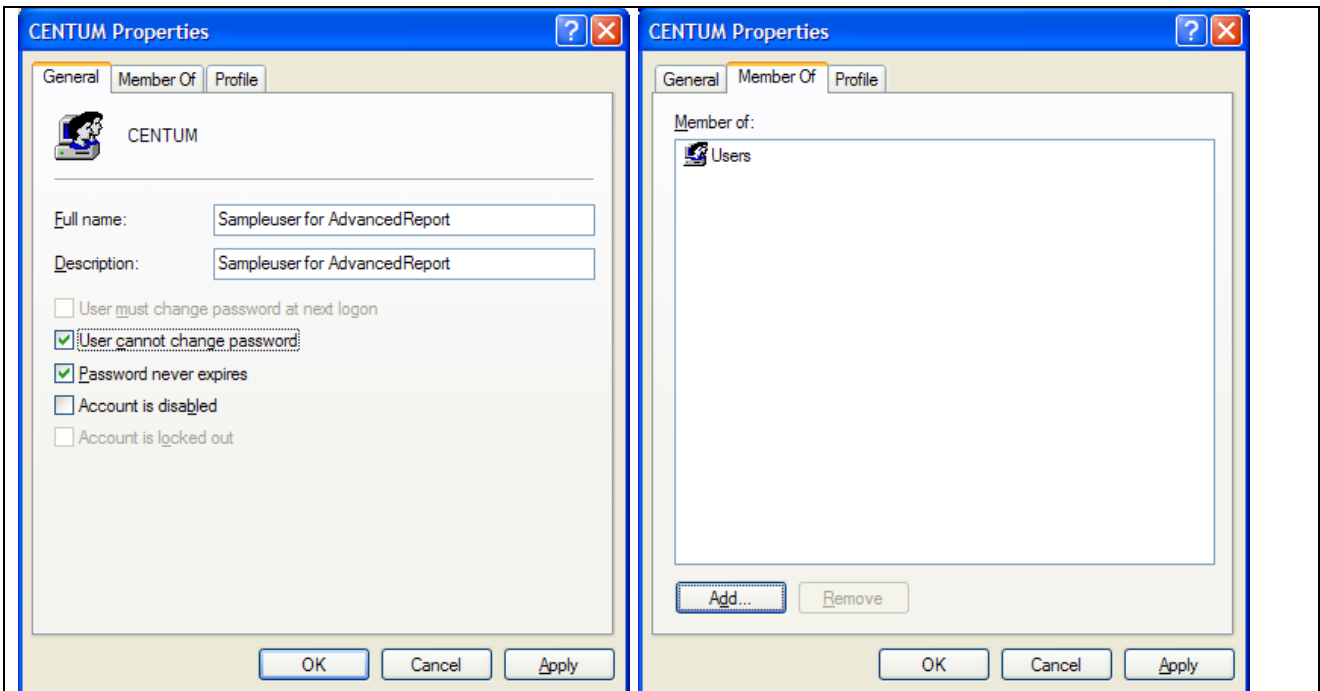
control panel → Administrative tools → Computer Management  
 Local user and groups → user





Create a new user

You have to set a password!

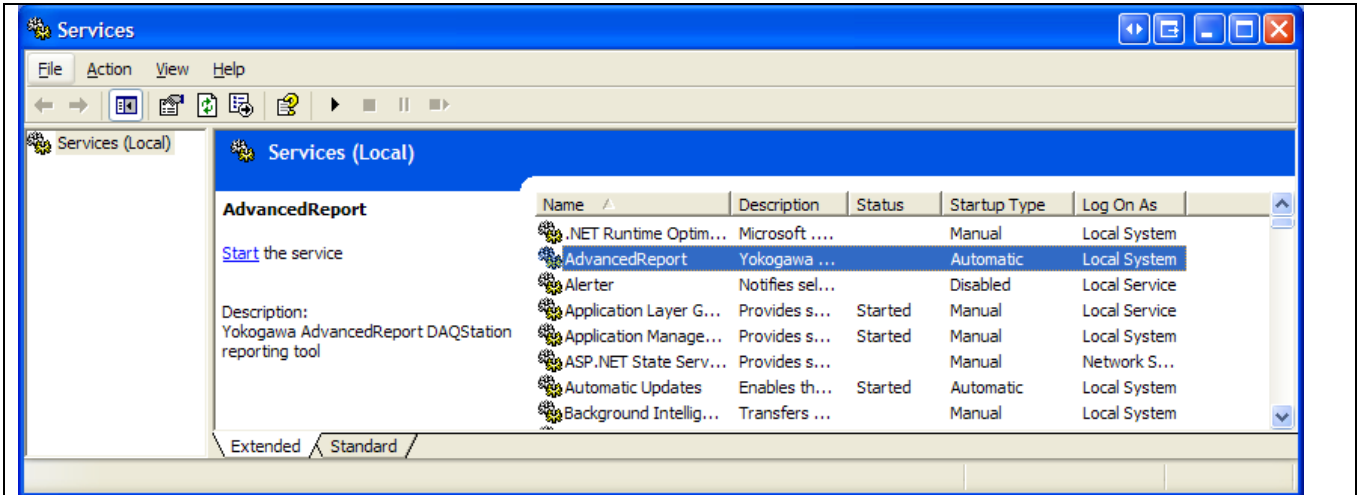


User settings

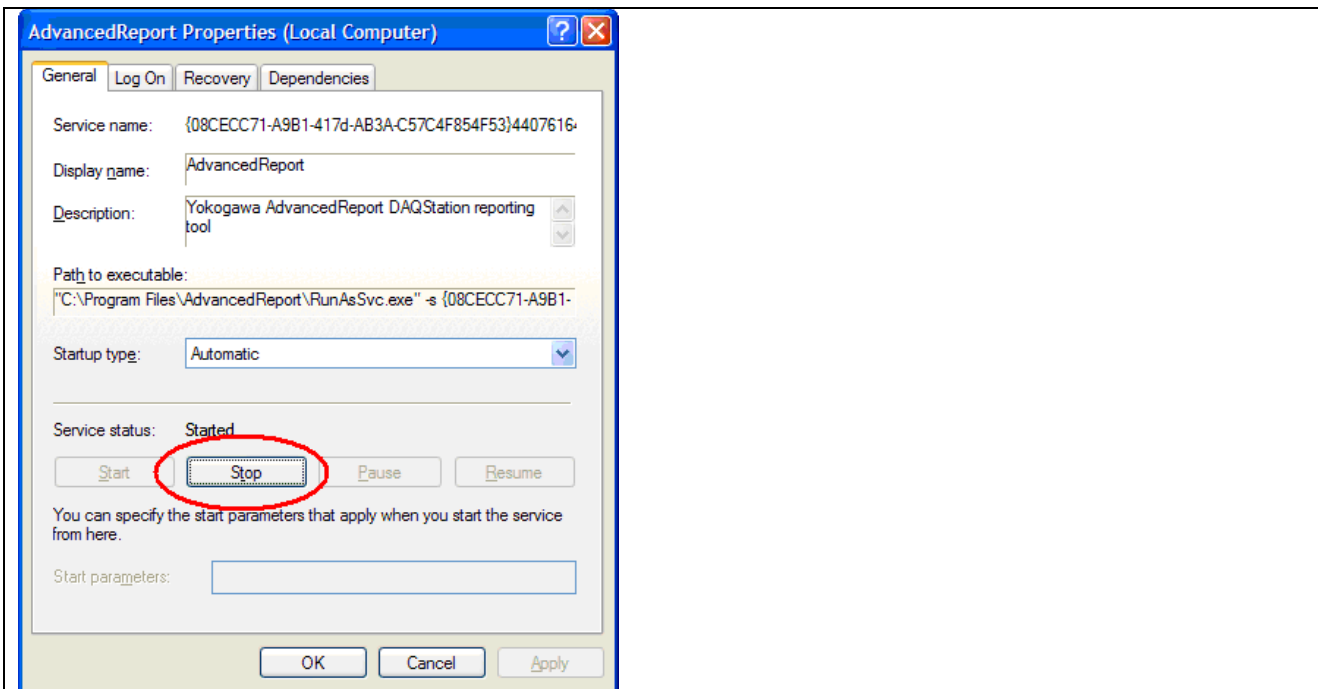
### 10.2.2 Change the settings for the service:

Control Panel → Administrative tools → Services

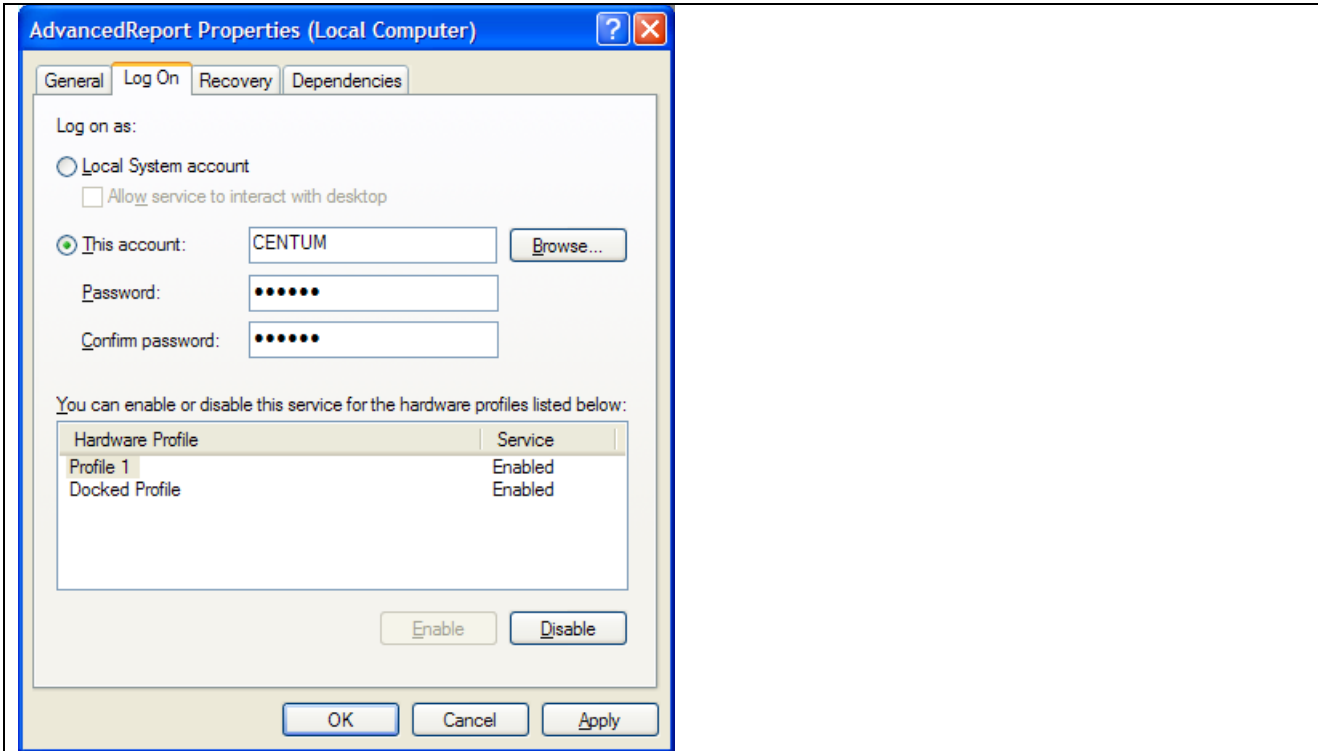




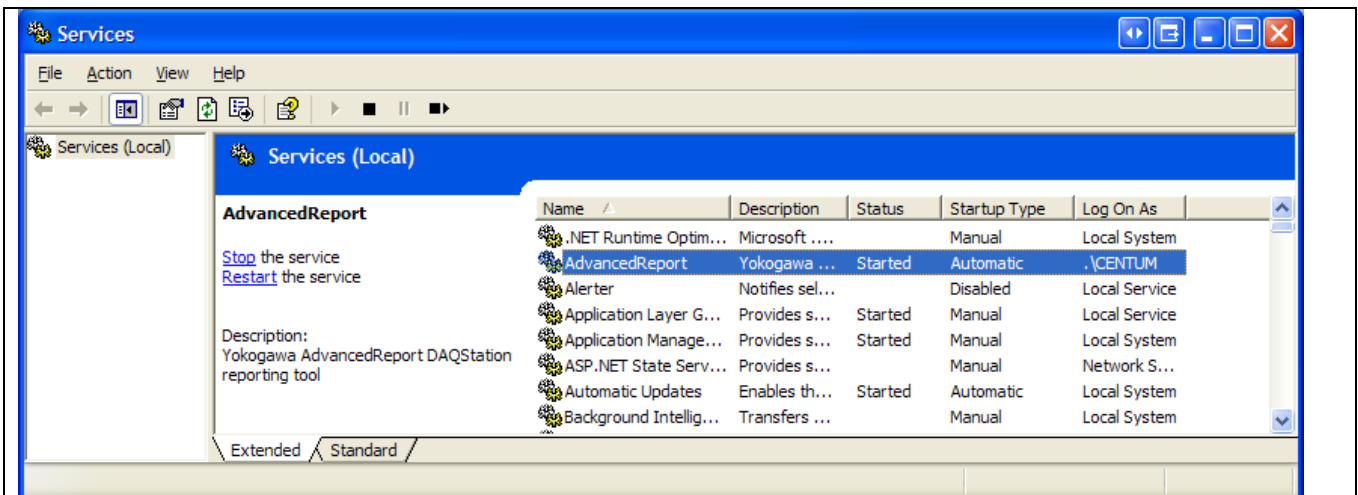
Service run with local system account



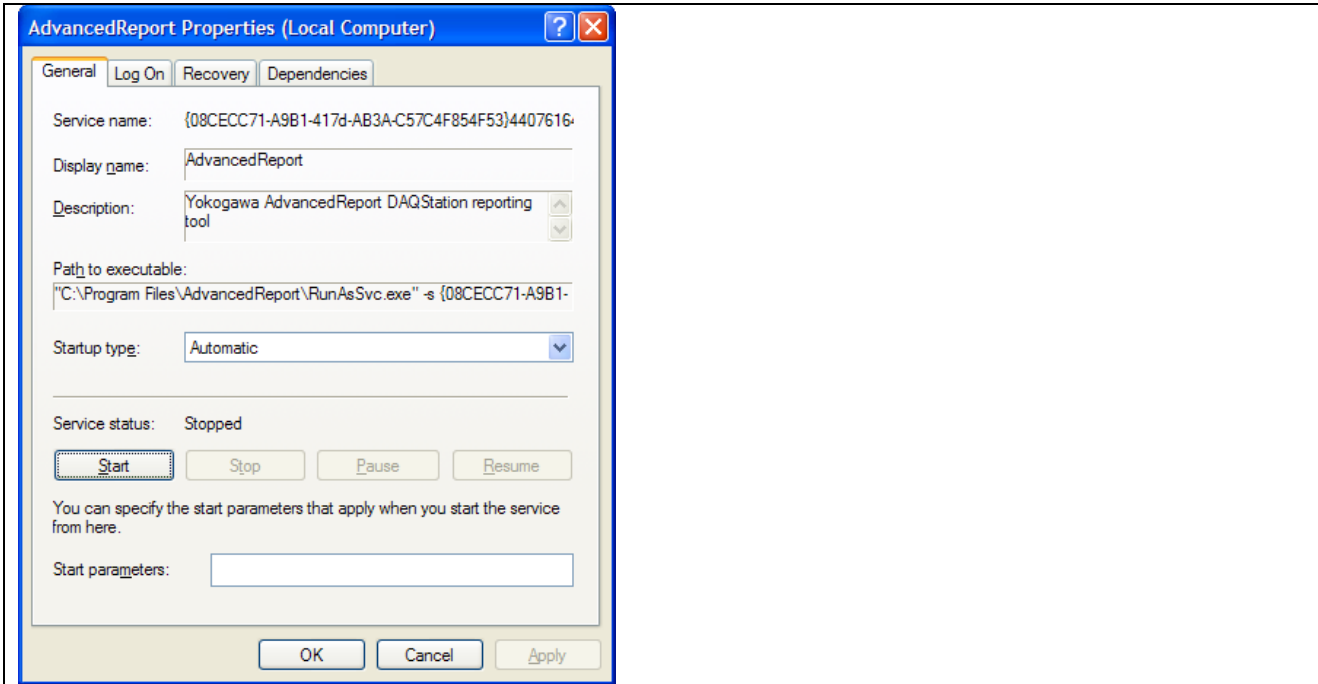
Stop the service



Change from System-account to local user account



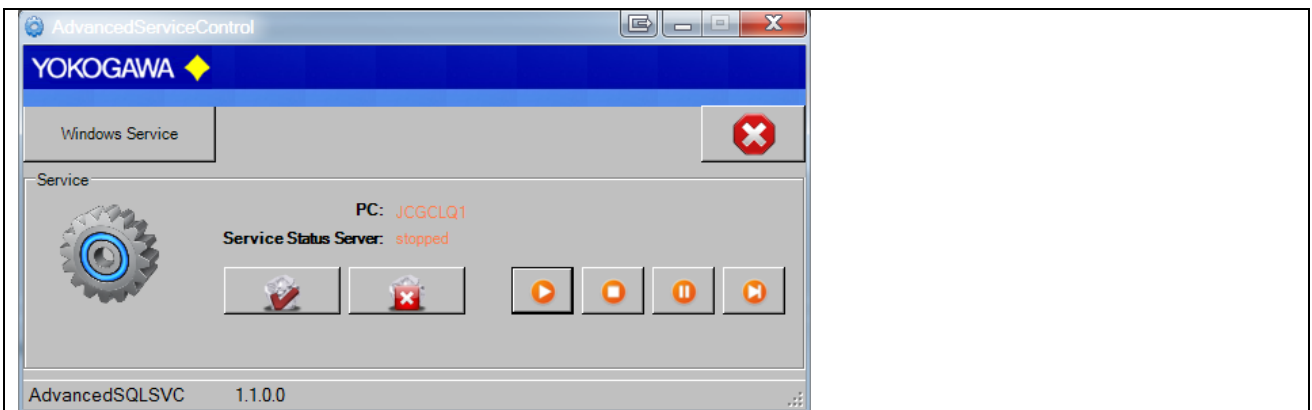
Service run with local user account



Restart the service

### 10.3 De-Installation Service

Change to the Settings register. The Button „Stop“ stopped the service. After stopping the service it is possible to deinstall the servie by using the button „Un-Install“.



Stopp and Deinstall

## 11. De-installation Program

The de-installation can be done by the uninstall-routine of Windows. To be found under Start → Settings → Control panel → Software.

## 12. Additional Options

The program AdvancedSQLV2 does not need an entry in the registry of Windows. All settings are stored into the file AdvancedSQLV2.ini. Only the function „Start with Windows“ will be defined an entry into the registry when this is activated.

The DLL-files do not need a registration.

It is possible to move the program or to start as batch program. All the files should then be in the same folder.

## 13. More Solutions

Check our Website for more solution:

<https://www.AdvancedTools.de>

<http://www.SmartDACplus.com>

Also available are the following software products:

- **AdvancedUserConnect**
  - The program AdvancedUserConnect will be backup all the User Settings from any Smartdac Recorder
  - The user synchronization for all SmartDac Recorder will be done automatically
  
- **AdvancedReport**
  - Create Reports automatically
  - Create Excel Reports
  - Export Data into a textbase file format like CSV.
  - Analyze your data automatically
  
  - TUSReport - NADCAP AdvancedReport Addin
  - The program serves automatic converting of the data files and the event files of the Yokogawa recorder from the DX, DXP, FX and DXAdvanced family into the NADCAP Report format.